



CORRECTIONAL SOLUTIONS





TABLE OF CONTENTS

About New Star	4
Correctional Lighting Construction.....	6
Correctional Applications	8
Correctional Lighting Requirements	10
Clamshell vs. Doorframe	12
Sally Ports	14
Intake Areas	20
Dayrooms	24
Cells	30
Corridors	36
Washroom Areas	40
Building Facades	44
Exit Signs & Wall Plates	48

PROUD TO BE AMERICAN-MADE

New Star Lighting takes pride in being an American-made company, with our products designed, engineered, and manufactured in the USA. Our fixtures comply with the Buy American Act (BAA) and Build America, Buy America Act (BABAA) requirements, ensuring quality craftsmanship while supporting domestic industries. By adhering to these standards, we provide reliable, durable lighting solutions that meet the highest regulatory and performance expectations.





On-site manufacturing provides complete control over every step of the production process, from design to assembly, delivering durable and reliable luminaires tailored to specific needs.

By conducting testing on-site, we streamline the development process, allowing us to bring products to market faster while maintaining the highest levels of reliability and excellence.





DURABLE LIGHTING FOR SECURE SPACES

New Star Lighting recognizes the critical role reliable lighting plays in correctional facilities. With nearly 40 years of expertise in the correctional industry, we offer a comprehensive range of luminaires designed to withstand the most demanding environments. Built to endure the highest levels of impact and abuse, our fixtures provide consistent, safe illumination, essential for security and visibility. Available in a variety of gauges, lensing options, and styles, our lighting solutions are adaptable to the unique needs of facilities, ranging from minimum to super-maximum security levels.

CORRECTIONAL LIGHTING

HOUSING GAUGE

Die-formed, seam welded and heavy-gauge housing options to prevent contraband concealment. Housings available in cold rolled steel or stainless steel

FASTENERS

Assortment of correctional fasteners to prevent unauthorized access into fixtures including tamper-resistant Torx® Head, Allen Head and Breakaway fasteners

LED OPTIONS

Long lasting LEDs available in multiple color temperatures to suit a wide variety of applications with an optional dimming function

LENS THICKNESS

Impact-resistant lensing offered in polycarbonate or tempered glass in various thicknesses to withstand high levels of abuse

APPLICATIONS

Correctional luminaires provide safe, durable, and tamper-resistant lighting for key areas throughout a facility. Beyond merely providing illumination, lighting is an integral component of a comprehensive security system, enhancing both the safety of the staff and residents, along with the operational effectiveness of the facility.

New Star Lighting has manufactured luminaires for these applications since the mid-1980s. From cells to building facades, these fixtures are designed to enhance surveillance, support staff and resident safety, prevent escape attempts, minimize potential hazards, enable easy maintenance, and create a safe, controlled environment.





DAYROOM & RECREATION AREAS



CELLS



WASHROOM AREAS



BUILDING FACADES

LIGHTING REQUIREMENTS

Lighting in correctional facilities plays a vital role in maintaining safety, security, and operational efficiency. These lighting standards help create a secure, humane, and operationally efficient environment. Each area of a correctional facility — from cells to common areas — has unique lighting needs, but all aim to ensure visibility, safety, and long-term durability.

- **Sufficient Illumination:** Lighting must provide adequate brightness to ensure visibility for surveillance, reduce blind spots, and support safe movement for both staff and residents inmates. Different areas have varying brightness needs — cells typically require 20–50 foot-candles, while intake and medical areas may require higher levels.
- **Tamper-Resistant Design:** Luminaires must be designed to prevent dismantling or misuse. This includes anti-ligature features to reduce self-harm risks and impact-resistant construction to withstand physical abuse.
- **Durability and Vandal Resistance:** Lighting fixtures must be built with strong, secure materials like polycarbonate lenses and heavy-gauge steel to resist breakage, moisture, and wear from continuous use in high-risk areas.
- **Energy Efficiency:** LED lighting is widely used for its energy efficiency, long lifespan, and reduced maintenance costs. Energy-efficient lighting supports cost control and operational sustainability.
- **Automated and Dimmable Controls:** Automated dimming controls allow for lighting adjustments at night, promoting inmate sleep while still maintaining enough visibility for nighttime checks. This feature supports the overall inmate well-being of the residents and reduces operational costs.
- **Emergency Lighting:** Correctional facilities require emergency lighting to ensure continued visibility and security during power outages. Emergency lights must provide illumination for safe evacuation and maintain visibility for security purposes.
- **Health and Well-being:** Excessive exposure to harsh artificial lighting can negatively impact mental health. Thoughtful design incorporates lighting that supports circadian rhythms, with options for dimming or daylight-mimicking fixtures to promote well-being maintain visibility for security purposes.
- **Long-Term Performance:** Correctional lighting must provide consistent performance over time. Fixtures should be low-maintenance, corrosion-resistant, and durable to reduce operational costs and maintain continuous security.



New Star correctional luminaires are engineered to provide IES, American Correctional Association (ACA), and Federal Bureau of Prisons (FBOP) recommended foot-candle levels for their intended applications.

Recommended Minimum Lighting Levels (Foot-candles)			
Application	IES Recommended	ACA Required	FBOP Required
Cells	N/A	20*	20
Corridors	10-20	-	-
Dayrooms	30-50	-	-
Catwalks	10-20	-	-
Washrooms	20	-	-
Showers	10	-	-
Cafeterias	15	-	-
Kitchens	50-100	-	-
Recreation Areas	-	-	-
Sally Ports	-	-	-
*Grooming and desk area only			

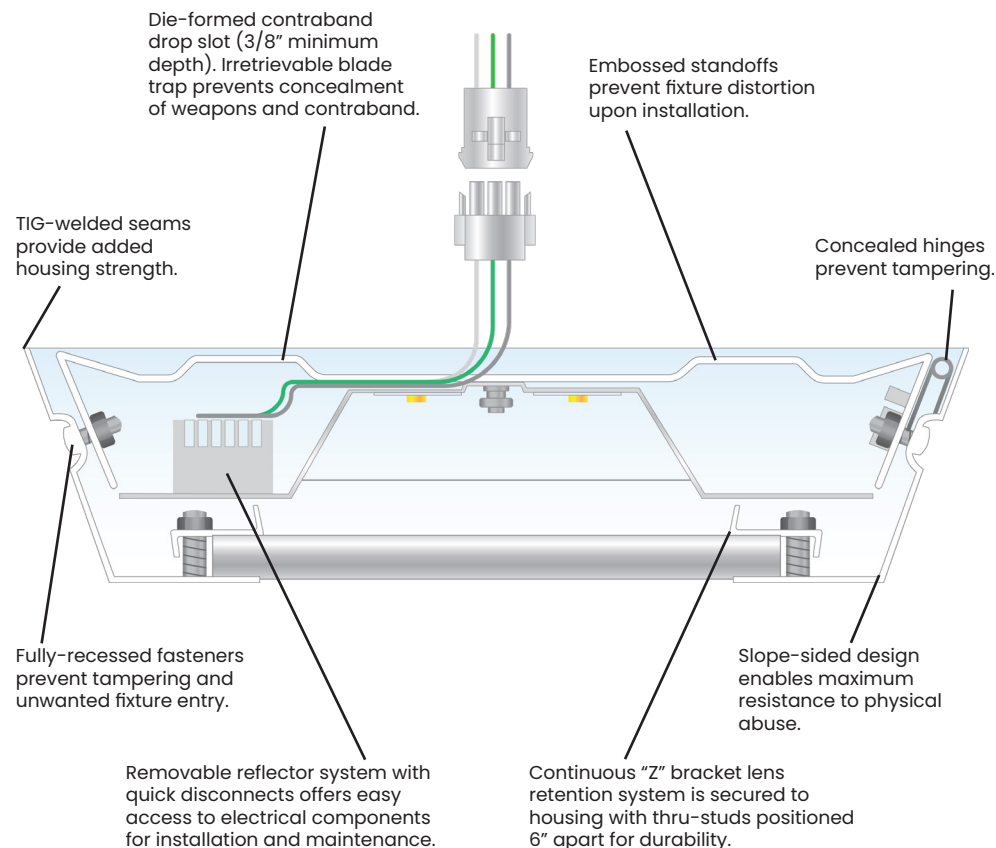
Correctional Material Selection Guidelines				
Security Levels	Minimum	Medium	Maximum	Super-Maximum
Housing Gauge, Steel	18	16	14	12
Housing Gauge, Stainless Steel	20	18	16	14
Inner Lens	.125"	.125"	.125"	.125"
Outer Lens - Tempered Glass	.187"	.250"	.375"	.500"
Fasteners	TP (Tamper Proof)	Recessed TP	Recessed TP	Recessed TP

CLAMSHELL & DOORFRAME DESIGNS

CLAMSHELL

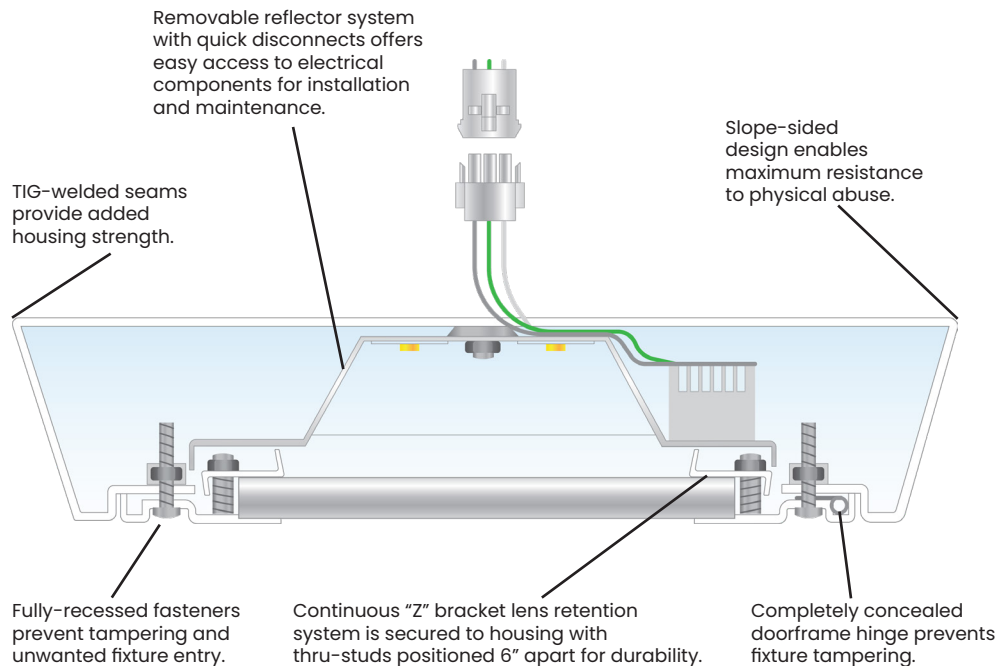
Clamshell luminaire designs offer numerous advantages for correctional facilities, including enhanced safety, durability, ease of maintenance, and the ability to withstand harsh, high-risk environments. Their unique sloped-sided design supports functionality and durability while maintaining safety standards.

- **Access:** The two-piece, hinged design ensures that the fixture cannot easily be disassembled or damaged by residents, making it ideal for high-security environments where tampering or vandalism is a concern. This design minimizes the risk of contraband concealment.
- **Security:** Offers minimal ligature points, heavy dutywelded construction, and a hidden baseplate with an irretrievable blade trap/ contraband drop slot. Also features a "Z" bracket lens retention system with 6"stud spacing to prevent contraband concealment.
- **Durability:** Sloped-sided design provides resistance to physical damage. Built with heavy-duty materials and reinforced frames to resist impact, abuse, and vandalism.
- **Maintenance:** The hinged housing and removable reflector, unitized with all electrical components, allows for quick and efficient access to the LED boards for easy repair or replacement, and reduces down time and service interruptions.



DOORFRAME

Doorframe luminaires prioritize security, control, and tamper resistance, making them an essential choice for cells, corridors, and high-security areas where containment and vandal resistance are critical. Their robust design protects against vandalism and ensures long-term reliability. Doorframe luminaires are also designed to accommodate security caulk.



- **Access:** Provides controlled access through a swing-open or removable frame, limiting exposure to internal components. Cell luminaires feature internal hinges. Available with knockouts for surface conduit.
- **Security:** Offers a higher level of protection with tamper-resistant construction to prevent unauthorized access. Doorframe hinges are full length, continuous and welded to prevent removal.
- **Durability:** Built with heavy-duty materials and reinforced frames to resist impact, abuse, and tampering.
- **Maintenance:** Incorporates a removable reflector, unitized with all electrical components, allows for quick and efficient access to the LED boards for easy repair or replacement, and reduces downtime and service interruptions.





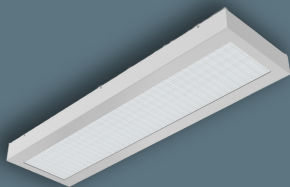
SALLY PORTS

New Star Lighting provides dependable, high-performance lighting solutions tailored for sally ports, which is a secure entryway or checkpoint used to control the movement of people and vehicles into and out of a correctional facility.

These areas require robust, durable luminaires capable of withstanding potential abuse while delivering bright, uniform illumination for optimal visibility and monitoring. Designed to enhance safety and operational efficiency, our fixtures support the secure movement of personnel, detainees, and vehicles. With a wide range of gauges, lensing options and styles, our luminaires are adaptable from Minimum to Super-Maximum security levels.

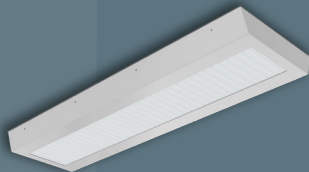
SALLY PORT LIGHTING: CLAMSHELL

CEILING MOUNT



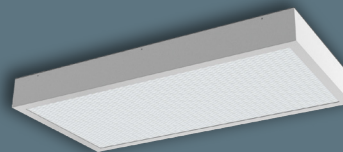
33M SERIES

- 2ft and 4ft lengths
- Straight-sided narrow (11") and wide (14") options
- Surface mount in 18, 16, 14, and 12-gauge cold rolled steel or up to 14-gauge stainless steel
- Acrylic, polycarbonate and glass lens options
- Up to 9,000 delivered lumens in the wide 4' unit



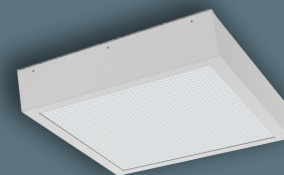
33L SERIES

- 2ft and 4ft dimensions
- Straight-sided narrow (11") and wide (14") options
- Surface mount in 18, 16, 14, and 12-gauge cold rolled steel or up to 14-gauge stainless steel
- Acrylic, polycarbonate and glass lens options
- Up to 9,000 delivered lumens in the wide 4' unit



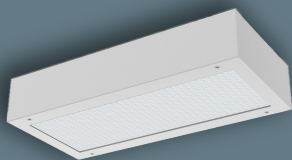
53M SERIES

- 1x1, 1x2, 1x4, 2x2 & 2x4 dimensions
- Straight-sided surface mount in 18, 16, 14, and 12-gauge cold rolled steel or up to 14-gauge stainless steel
- Acrylic, polycarbonate and glass lens options
- Up to 25,000 delivered lumens in the 2x4



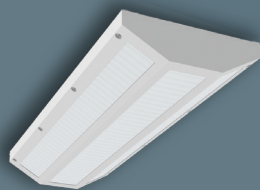
53L SERIES

- 1x2, 1x4, 2x2 & 2x4 dimensions
- Slope-sided surface mount in 18, 16, 14, and 12-gauge cold rolled steel or up to 14-gauge stainless steel
- Acrylic, polycarbonate and glass lens options
- Up to 25,000 delivered lumens in the 2x4



UM SERIES

- 2ft and 4ft lengths
- Straight-sided narrow (11.75") and wide (14.76") options
- Surface mount in 18, 16, 14 and 12-gauge cold rolled steel or up to 14-gauge stainless steel
- Acrylic, polycarbonate and glass lens options
- Up to 8,250 delivered lumens on wide 4' unit



UMS SERIES

- 2ft and 4ft lengths
- Hexagonal surface mount in 18, 16, 14, and 12-gauge cold rolled steel or up to 14-gauge stainless steel
- Acrylic, polycarbonate and glass lens options
- Up to 8,250 delivered lumens in the 4' unit



U.S. Patent No. 8,277,091

STARTILE MAX SERIES

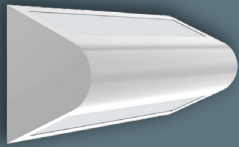
- 1x1, 1x4, 2x2 and 2x4 dimensions
- 16-Gauge cold rolled steel with extruded aluminum housing and beveled edges
- Two lenses provide maximum durability. Interior lens is white polycarbonate and exterior is .250 clear polycarbonate
- Up to 8,250 delivered lumens in the 4' unit



53V SERIES

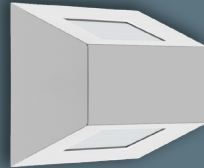
- 2ft and 4ft lengths
- Triangle surface mount in 18, 16, 14, and 12-gauge cold rolled steel or up to 14-gauge stainless steel
- Acrylic, polycarbonate and glass lens options
- Up to 12,000 delivered lumens in the 4' unit

WALL MOUNT



RUD SERIES

- 1ft, 2ft and 4ft lengths
- Surface bullnose unit offers up/down light distribution
- Available in 18, 16, and 14-gauge cold rolled steel or stainless steel
- Up to 11,000 delivered lumens in the 4' unit



SUD SERIES

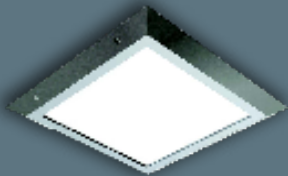
- 7in x 2ft and 4ft lengths
- Surface angled 2-aperture clamshell housing design
- Available in 18, 16 and 14-gauge cold rolled steel or stainless steel
- Up to 10,000 delivered lumens in the 4' unit



SAFEGUARD WALL SERIES

- 12.5" Dia. round or 12.5" square shape with three different frame styles: open, half cutoff and grid
- Surface installation, ADA options available
- Opal UV-stabilized polycarbonate lens for maximum diffusion
- IP66 Listed per IEC60598, IK10 Listed per IEC60068

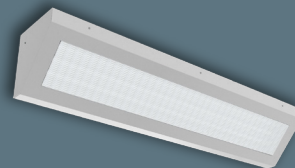
CORNER MOUNT



U.S. Patent No. 8,277,091

STARTILE VR SERIES

- 1x1, 1x4, 2x2 & 2x4 dimensions
- 16-Gauge cold rolled steel with extruded aluminum housing and beveled edges
- Two lenses provide maximum durability. Interior lens is white polycarbonate and exterior is .060 clear polycarbonate
- Up to 7,500 delivered lumens in the 2x4 unit



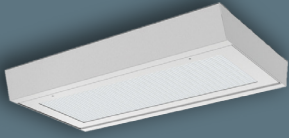
55M SERIES

- 8.5" x 1', 2' or 4' dimensions
- Surface corner mount in 18, 16, 14, and 12-gauge cold rolled steel or up to 14-gauge stainless steel
- Acrylic, polycarbonate and glass lens options
- Up to 8,250 delivered lumens in the 4' unit



SALLY PORT LIGHTING: DOORFRAME

CEILING MOUNT



U.S. Patent No. 8,770,785

WARRIOR SERIES

- 2ft and 4ft lengths
- Slope-sided narrow (14.50") and wide (16") options
- Available in 18, 16, and 14-gauge cold rolled steel or stainless steel
- Acrylic, polycarbonate and glass lens options
- Up to 11,500 delivered lumens in 4' wide unit



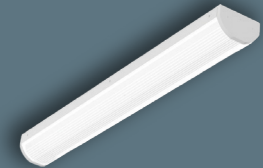
33 SERIES

- 2ft and 4ft dimensions
- Slope-sided narrow (12") and wide (20") options
- Available in 18, 16, 14, and 12-gauge cold rolled steel or up to 14-gauge stainless steel
- Acrylic, polycarbonate and glass lens options
- Up to 9,000 delivered lumens in 4' wide unit



53 SERIES

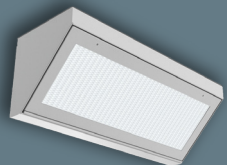
- 1x1, 1x2, 1x4, 2x2 and 2x4 dimensions
- Inset doorframe design for surface mount installation
- Available in 18, 16, 14 and 12-gauge cold rolled steel or up to 14-gauge stainless steel
- Acrylic, polycarbonate and glass lens options
- Up to 25,000 delivered lumens in 2x4 high output unit



VICTORY SERIES

- 1ft, 2ft, 3ft and 4ft dimensions
- Narrow (6.5") and wide (10.5") surface mount options
- Marine grade, extruded aluminum housing and endcaps
- Choice of linear ribbed clear or white UV-stabilized polycarbonate lens
- Up to 18,300 delivered lumens in 4' wide unit

CORNER MOUNT



55 SERIES

- 8.5" x 1', 2' or 4' lengths
- Surface corner mount in 18, 16, 14 and 12-gauge cold rolled steel or up to 14-gauge stainless steel
- Acrylic, polycarbonate and glass lens options
- Up to 8,650 delivered lumens in 4' length







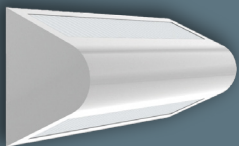
INTAKE AREAS

The intake area is a high-security, high traffic environment where detainees are processed, searched, and classified. Proper lighting in these spaces is critical for maintaining order, and ensures that surveillance cameras can capture clear and detailed footage of all activities in the intake area. This is critical for monitoring inmate behavior, preventing altercations, and detecting any contraband being smuggled into the facility.

Bright, uniform illumination allows for clear visibility during searches, screenings, and documentation. Fixtures must be tamper-resistant and easy to maintain. By providing consistent, glarefree lighting, intake areas remain secure and functional, allowing staff to maintain control and streamline the process with precision and efficiency.

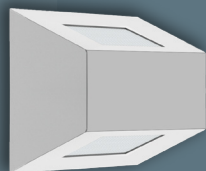
INTAKE LIGHTING: CLAMSHELL

CEILING MOUNT



RUD SERIES

- 1ft, 2ft and 4ft lengths
- Surface bullnose unit offers up/down light distribution
- Available in 18, 16, and 14-gauge cold rolled steel or stainless steel
- Up to 11,000 delivered lumens in the 4' unit



SUD SERIES

- 7in x 2ft and 4ft lengths
- Surface angled 2-aperture clamshell housing design
- Available in 18, 16 and 14-gauge cold rolled steel or stainless steel
- Up to 10,000 delivered lumens in the 4' unit

EXIT SIGNS



620 SERIES

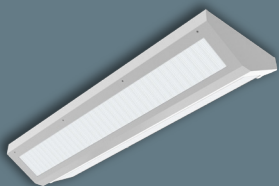
- Single face or double face options
- 14-Gauge cold rolled steel
- Surface wall or ceiling installation
- Internal panel with stencil cut red or green letters and arrows



MODEX SERIES

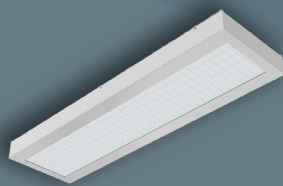
- Single face with red or green lettering options
- 20-Gauge formed stainless steel housing
- Recessed installation. Suitable for modular walls
- Optional tamper-resistant Torx® head fasteners

CEILING MOUNT



53V SERIES

- 2ft and 4ft lengths
- Triangle surface mount in 18, 16, 14, and 12-gauge cold rolled steel or up to 14-gauge stainless steel
- Acrylic, polycarbonate and glass lens options
- Up to 12,000 delivered lumens in the 4' unit



33M SERIES

- 2ft and 4ft lengths
- Straight-sided narrow (11") and wide (14") options
- Surface mount in 18, 16, 14, and 12-gauge cold rolled steel or up to 14-gauge stainless steel
- Acrylic, polycarbonate and glass lens options
- Up to 9,000 delivered lumens in 4' unit

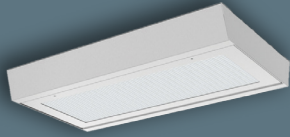


33L SERIES

- 2ft and 4ft lengths
- Straight-sided narrow (11") and wide (14") options
- Surface mount in 18, 16, 14 and 12-gauge cold rolled steel or up to 14-gauge stainless steel
- Acrylic, polycarbonate and glass lens options
- Up to 9,000 delivered lumens in 4' unit

INTAKE LIGHTING: DOORFRAME

CEILING MOUNT



U.S. Patent No. 8,770,785

WARRIOR SERIES

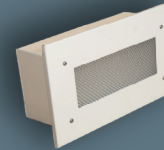
- 2ft and 4ft lengths
- Slope-sided narrow (14.50") and wide (16") options
- Available in 18, 16, and 14-gauge cold rolled steel or stainless steel
- Acrylic, polycarbonate and glass lens options
- Up to 11,500 delivered lumens in 4' wide unit



33 SERIES

- 2ft and 4ft lengths
- Straight-sided narrow (12") and wide (20") options
- Available in 18, 16, 14 and 12-gauge cold rolled steel or up to 14-gauge stainless steel
- Acrylic, polycarbonate and glass lens options
- Up to 9,000 delivered lumens in 4' wide unit

STEPLIGHTS



57S SERIES

- Recessed steplight; open or louver faceplate options
- 4000K White LED
- 18-, 16-, 14-Gauge cold rolled steel or 20- or 14-Gauge stainless steel
- Tamper-resistant Torx® head fasteners







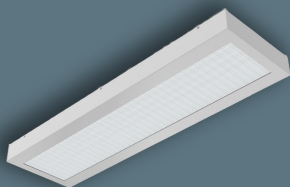
DAYROOMS

New Star Lighting recognizes the vital role of proper lighting in multi-purpose spaces like dayrooms, indoor recreation areas, and cafeterias. These are common spaces where residents congregate, interact, and engage in recreational activities. Proper lighting ensures that these areas are well-lit, making it easier for security staff to observe inmate behavior, detect potential conflicts, and prevent contraband or other security violations.

Our durable luminaires are built to withstand damage, and deliver uniform, evenly distributed lighting for a comfortable and functional environment. With a wide selection of housing gauges, lensing options, and other design options our luminaires provide flexible solutions to meet the demands of facilities across all security levels.

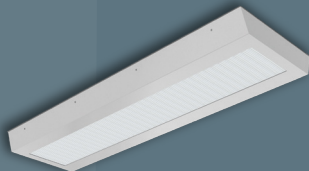
DAYROOM LIGHTING: CLAMSHELL

CEILING MOUNT



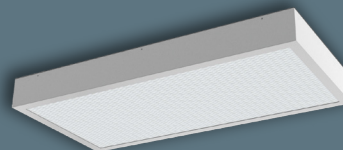
33M SERIES

- 2ft and 4ft lengths
- Straight-sided narrow (11") and wide (14") options
- Surface mount in 18, 16, 14, and 12-gauge cold rolled steel or up to 14-gauge stainless steel
- Acrylic, polycarbonate and glass lens options
- Up to 9,000 delivered lumens in the wide 4' unit



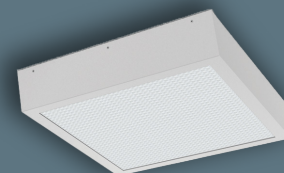
33L SERIES

- 2ft and 4ft dimensions
- Straight-sided narrow (11") and wide (14") options
- Surface mount in 18, 16, 14, and 12-gauge cold rolled steel or up to 14-gauge stainless steel
- Acrylic, polycarbonate and glass lens options
- Up to 9,000 delivered lumens in the wide 4' unit



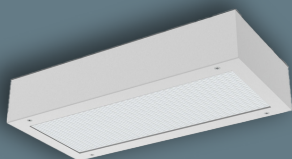
53M SERIES

- 1x1, 1x2, 1x4, 2x2 & 2x4 dimensions
- Straight-sided surface mount in 18, 16, 14, and 12-gauge cold rolled steel or up to 14-gauge stainless steel
- Acrylic, polycarbonate and glass lens options
- Up to 25,000 delivered lumens in the 2x4



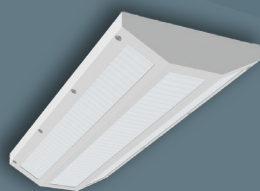
53L SERIES

- 1x2, 1x4, 2x2 & 2x4 dimensions
- Slope-sided surface mount in 18, 16, 14, and 12-gauge cold rolled steel or up to 14-gauge stainless steel
- Acrylic, polycarbonate and glass lens options
- Up to 25,000 delivered lumens in the 2x4



UM SERIES

- 2ft and 4ft lengths
- Straight-sided narrow (11.75") and wide (14.76") options
- Surface mount in 18, 16, 14 and 12-gauge cold rolled steel or up to 14-gauge stainless steel
- Acrylic, polycarbonate and glass lens options
- Up to 8,250 delivered lumens on wide 4' unit



UMS SERIES

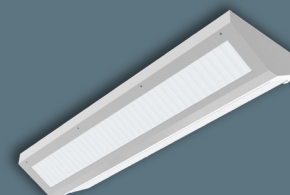
- 2ft and 4ft lengths
- Hexagonal surface mount in 18, 16, 14, and 12-gauge cold rolled steel or up to 14-gauge stainless steel
- Acrylic, polycarbonate and glass lens options
- Up to 8,250 delivered lumens in the 4' unit



U.S. Patent No. 8,277,091

STARTILE MAX SERIES

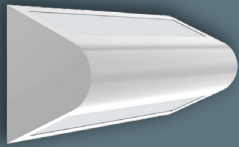
- 1x1, 1x4, 2x2 and 2x4 dimensions
- 16-Gauge cold rolled steel with extruded aluminum housing and beveled edges
- Two lenses provide maximum durability. Interior lens is white polycarbonate and exterior is .250 clear polycarbonate
- Up to 8,250 delivered lumens in the 4' unit



53V SERIES

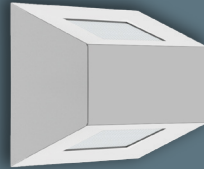
- 2ft and 4ft lengths
- Triangle surface mount in 18, 16, 14, and 12-gauge cold rolled steel or up to 14-gauge stainless steel
- Acrylic, polycarbonate and glass lens options
- Up to 12,000 delivered lumens in the 4' unit

WALL MOUNT



RUD SERIES

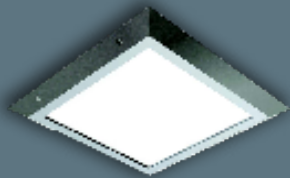
- 1ft, 2ft and 4ft lengths
- Surface bullnose unit offers up/down light distribution
- Available in 18, 16, and 14-gauge cold rolled steel or stainless steel
- Up to 11,000 delivered lumens in the 4' unit



SUD SERIES

- 7in x 2ft and 4ft lengths
- Surface angled 2-aperture clamshell housing design
- Available in 18, 16 and 14-gauge cold rolled steel or stainless steel
- Up to 10,000 delivered lumens in the 4' unit

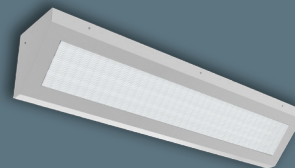
CORNER MOUNT



U.S. Patent No. 8,277,091

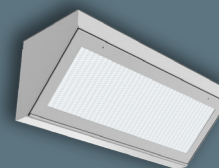
STARTILE VR SERIES

- 1x1, 1x4, 2x2 & 2x4 dimensions
- 16-Gauge cold rolled steel with extruded aluminum housing and beveled edges
- Two lenses provide maximum durability. Interior lens is white polycarbonate and exterior is .060 clear polycarbonate
- Up to 7,500 delivered lumens in the 2x4 unit



55M SERIES

- 8.5" x 1', 2' or 4' dimensions
- Surface corner mount in 18, 16, 14, and 12-gauge cold rolled steel or up to 14-gauge stainless steel
- Acrylic, polycarbonate and glass lens options
- Up to 8,250 delivered lumens in the 4' unit



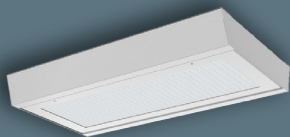
55 SERIES

- 8.5" x 1', 2' or 4' lengths
- Surface corner mount in 18, 16, 14 and 12-gauge cold rolled steel or up to 14-gauge stainless steel
- Acrylic, polycarbonate and glass lens options
- Up to 8,650 delivered lumens in 4' length



DAYROOM LIGHTING: DOORFRAME

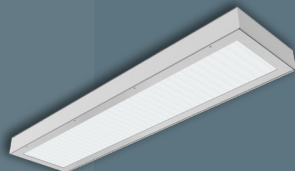
CEILING MOUNT



U.S. Patent No. 8,770,785

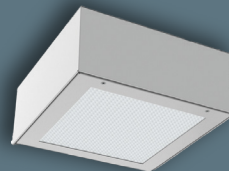
WARRIOR SERIES

- 2ft and 4ft lengths
- Slope-sided narrow (14.50") and wide (16") options
- Available in 18, 16, and 14-gauge cold rolled steel or stainless steel
- Acrylic, polycarbonate and glass lens options
- Up to 11,500 delivered lumens in 4' wide unit



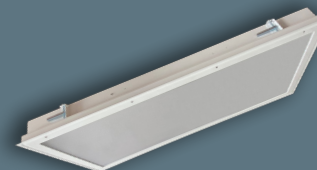
33 SERIES

- 2ft and 4ft dimensions
- Slope-sided narrow (12") and wide (20") options
- Available in 18, 16, 14, and 12-gauge cold rolled steel or up to 14-gauge stainless steel
- Acrylic, polycarbonate and glass lens options
- Up to 9,000 delivered lumens in 4' wide unit



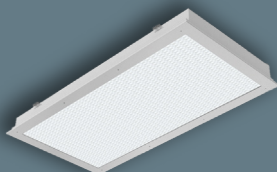
53 SERIES

- 1x1, 1x2, 1x4, 2x2 and 2x4 dimensions
- Inset doorframe design for surface mount installation
- Available in 18, 16, 14 and 12-gauge cold rolled steel or up to 14-gauge stainless steel
- Acrylic, polycarbonate and glass lens options
- Up to 25,000 delivered lumens in 2x4 high output unit



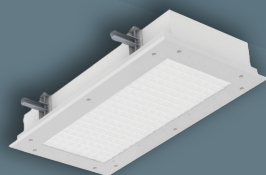
57R SERIES

- 1x2, 1x4, 2x2 and 2x4 dimensions
- Recessed ceiling mount; grid or flange
- Available in 18, 16, 14, and 12-gauge cold rolled steel or up to 14-gauge stainless steel
- Acrylic, polycarbonate and glass lens options
- Up to 25,000 delivered lumens in the 2x4



37M SERIES

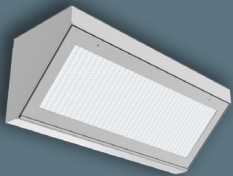
- 1x2, 1x4, 2x2 and 2x4 dimensions
- Recessed flange installation with adjustable 90° swing arm system
- Available in 18, 16, 14, and 12-gauge cold rolled steel or up to 14-gauge stainless steel
- Acrylic, polycarbonate and glass lens options
- Up to 22,000 delivered lumens in the 2x4



STARCLEAN SERIES

- 1x2, 1x4, 2x2 and 2x4 dimensions
- steel housing. Recessed ceiling mount; grid or flange
- 20-Gauge formed cold rolled steel, aluminum or stainless steel options available
- IP65 rating. NSF2 Splash/Non-Food Zone ideal for cafeteria applications
- Up to 25,000 delivered lumens in the 2x4

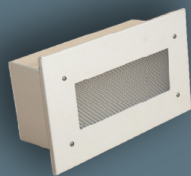
CORNER MOUNT



55 SERIES

- 8.5" x 1', 2' or 4' lengths
- Surface corner mount in 18, 16, 14 and 12-gauge cold rolled steel or up to 14-gauge stainless steel
- Acrylic, polycarbonate and glass lens options
- Up to 8,650 delivered lumens in 4' length

STEPLIGHTS



57S SERIES

- Recessed steplight; open or louver faceplate options
- 4000K White LED
- 18-, 16-, 14-Gauge cold rolled steel or 20- or 14-Gauge stainless steel
- Tamper-resistant Torx® head fasteners







CELLS

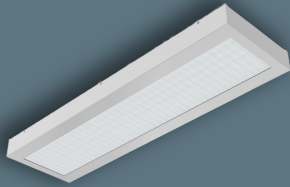
Effective lighting in prison cells is crucial for maintaining safety, security, and the well-being of residents and staff.

Detainees spend a significant portion of their time in their cells, so proper lighting plays a critical role in promoting health, minimizing stress, and enhancing safety within the facility.

Proper lighting ensures that residents cannot conceal contraband within the luminaires. The room must be well-lit for visual inspection, and enhance the effectiveness of surveillance systems. Lighting should be designed for antiligature to minimize the risk of self-harm. Durability is key, as fixtures must withstand high-impact conditions. Energy efficient, long-lasting solutions, now with circadian options, are essential for reducing operational costs while maintaining consistent performance in these high demand areas.

CELL LIGHTING: CLAMSHELL

CEILING MOUNT



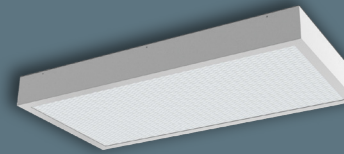
33M SERIES

- 2ft and 4ft lengths
- Straight-sided narrow (11") and wide (14") options
- Surface mount in 18, 16, 14, and 12-gauge cold rolled steel or up to 14-gauge stainless steel
- Acrylic, polycarbonate and glass lens options
- Up to 9,000 delivered lumens in the wide 4' unit



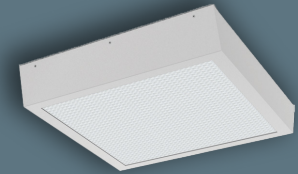
33L SERIES

- 2ft and 4ft dimensions
- Straight-sided narrow (11") and wide (14") options
- Surface mount in 18, 16, 14, and 12-gauge cold rolled steel or up to 14-gauge stainless steel
- Acrylic, polycarbonate and glass lens options
- Up to 9,000 delivered lumens in the wide 4' unit



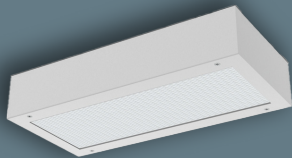
53M SERIES

- 1x1, 1x2, 1x4, 2x2 & 2x4 dimensions
- Straight-sided surface mount in 18, 16, 14, and 12-gauge cold rolled steel or up to 14-gauge stainless steel
- Acrylic, polycarbonate and glass lens options
- Up to 25,000 delivered lumens in the 2x4



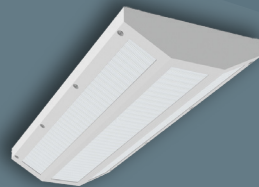
53L SERIES

- 1x2, 1x4, 2x2 & 2x4 dimensions
- Slope-sided surface mount in 18, 16, 14, and 12-gauge cold rolled steel or up to 14-gauge stainless steel
- Acrylic, polycarbonate and glass lens options
- Up to 25,000 delivered lumens in the 2x4



UM SERIES

- 2ft and 4ft lengths
- Straight-sided narrow (11.75") and wide (14.76") options
- Surface mount in 18, 16, 14 and 12-gauge cold rolled steel or up to 14-gauge stainless steel
- Acrylic, polycarbonate and glass lens options
- Up to 8,250 delivered lumens on wide 4' unit



UMS SERIES

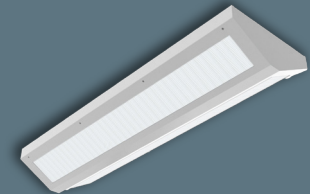
- 2ft and 4ft lengths
- Hexagonal surface mount in 18, 16, 14, and 12-gauge cold rolled steel or up to 14-gauge stainless steel
- Acrylic, polycarbonate and glass lens options
- Up to 8,250 delivered lumens in the 4' unit



U.S. Patent No. 8,277,091

STARTILE MAX SERIES

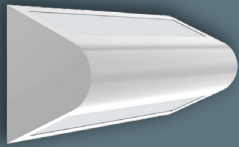
- 1x1, 1x4, 2x2 and 2x4 dimensions
- 16-Gauge cold rolled steel with extruded aluminum housing and beveled edges
- Two lenses provide maximum durability. Interior lens is white polycarbonate and exterior is .250 clear polycarbonate
- Up to 8,250 delivered lumens in the 4' unit



53V SERIES

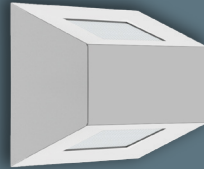
- 2ft and 4ft lengths
- Triangle surface mount in 18, 16, 14, and 12-gauge cold rolled steel or up to 14-gauge stainless steel
- Acrylic, polycarbonate and glass lens options
- Up to 12,000 delivered lumens in the 4' unit

WALL MOUNT



RUD SERIES

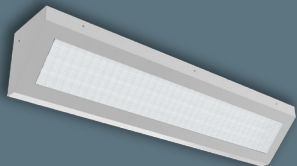
- 1ft, 2ft and 4ft lengths
- Surface bullnose unit offers up/down light distribution
- Available in 18, 16, and 14-gauge cold rolled steel or stainless steel
- Up to 11,000 delivered lumens in the 4' unit



SUD SERIES

- 7in x 2ft and 4ft lengths
- Surface angled 2-aperture clamshell housing design
- Available in 18, 16 and 14-gauge cold rolled steel or stainless steel
- Up to 10,000 delivered lumens in the 4' unit

CORNER MOUNT



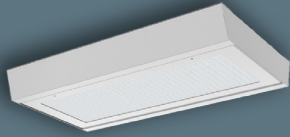
55M SERIES

- 8.5" x 1', 2' or 4' dimensions
- Surface corner mount in 18, 16, 14, and 12-gauge cold rolled steel or up to 14-gauge stainless steel
- Acrylic, polycarbonate and glass lens options
- Up to 8,250 delivered lumens in the 4' unit



CELL LIGHTING: DOORFRAME

CEILING MOUNT



U.S. Patent No. 8,770,785

WARRIOR SERIES

- 2ft and 4ft lengths
- Slope-sided narrow (14.50") and wide (16") options
- Available in 18, 16, and 14-gauge cold rolled steel or stainless steel
- Acrylic, polycarbonate and glass lens options
- Up to 11,500 delivered lumens in 4' wide unit



33 SERIES

- 2ft and 4ft dimensions
- Slope-sided narrow (12") and wide (20") options
- Available in 18, 16, 14, and 12-gauge cold rolled steel or up to 14-gauge stainless steel
- Acrylic, polycarbonate and glass lens options
- Up to 9,000 delivered lumens in 4' wide unit



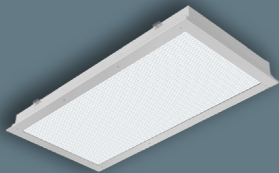
53 SERIES

- 1x1, 1x2, 1x4, 2x2 and 2x4 dimensions
- Inset doorframe design for surface mount installation
- Available in 18, 16, 14 and 12-gauge cold rolled steel or up to 14-gauge stainless steel
- Acrylic, polycarbonate and glass lens options
- Up to 25,000 delivered lumens in 2x4 high output unit



57R SERIES

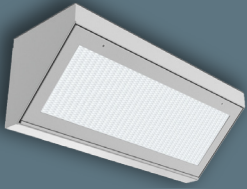
- 1x2, 1x4, 2x2 and 2x4 dimensions
- Recessed ceiling mount; grid or flange
- Available in 18, 16, 14, and 12-gauge cold rolled steel or up to 14-gauge stainless steel
- Acrylic, polycarbonate and glass lens options
- Up to 25,000 delivered lumens in the 2x4



37M SERIES

- 1x2, 1x4, 2x2 and 2x4 dimensions
- Recessed flange installation with adjustable 90° swing arm system
- Available in 18, 16, 14, and 12-gauge cold rolled steel or up to 14-gauge stainless steel
- Acrylic, polycarbonate and glass lens options
- Up to 22,000 delivered lumens in the 2x4

CORNER MOUNT



55 SERIES

- 8.5" x 1', 2' or 4' lengths
- Surface corner mount in 18, 16, 14 and 12-gauge cold rolled steel or up to 14-gauge stainless steel
- Acrylic, polycarbonate and glass lens options
- Up to 8,650 delivered lumens in 4' length







CORRIDORS

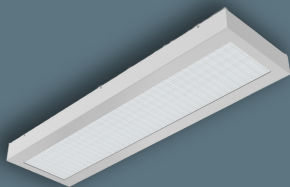
Corridors are high-traffic areas used by both staff and detainees for movement between cells and common areas.

Adequate lighting ensures clear visibility for surveillance systems, helping to detect potential altercations, unusual behavior, or contraband. It also provides clear images for CCTV footage, allowing for detailed monitoring of resident activity. In high-security areas, the lighting system must be tamper resistant, durable, and capable of withstanding harsh environments.

By incorporating energy-efficient, durable, and uniform lighting systems, and ensuring proper monitoring and control, correctional facilities can create well-lit corridors that contribute to a secure and functional environment.

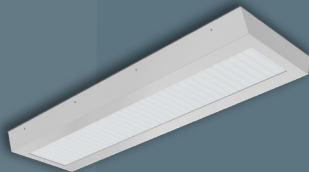
CORRIDOR LIGHTING: CLAMSHELL

CEILING MOUNT



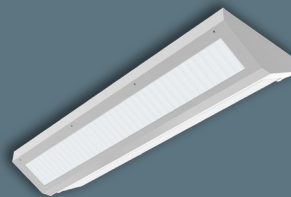
33M SERIES

- 2ft and 4ft lengths
- Straight-sided narrow (11") and wide (14") options
- Surface mount in 18, 16, 14, and 12-gauge cold rolled steel or up to 14-gauge stainless steel
- Acrylic, polycarbonate and glass lens options
- Up to 9,000 delivered lumens in the wide 4' unit



33L SERIES

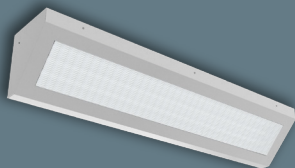
- 2ft and 4ft dimensions
- Straight-sided narrow (11") and wide (14") options
- Surface mount in 18, 16, 14, and 12-gauge cold rolled steel or up to 14-gauge stainless steel
- Acrylic, polycarbonate and glass lens options
- Up to 9,000 delivered lumens in the wide 4' unit



53V SERIES

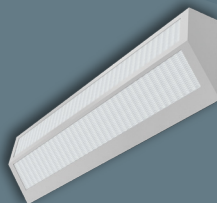
- 2ft and 4ft lengths
- Triangle surface mount in 18, 16, 14, and 12-gauge cold rolled steel or up to 14-gauge stainless steel
- Acrylic, polycarbonate and glass lens options
- Up to 12,000 delivered lumens in the 4' unit

CORNER MOUNT



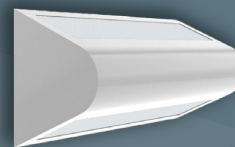
55M SERIES

- 8.5" x 1', 2' or 4' dimensions
- Surface corner mount in 18, 16, 14, and 12-gauge cold rolled steel or up to 14-gauge stainless steel
- Acrylic, polycarbonate and glass lens options
- Up to 8,250 delivered lumens in the 4' unit



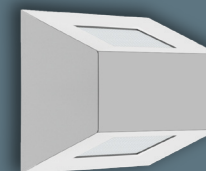
55W SERIES

- 8.5" x 1', 2' or 4' dimensions
- Surface corner mount in 18, 16, 14, and 12-gauge cold rolled steel or up to 14-gauge stainless steel
- Acrylic, polycarbonate and glass lens options
- Up to 8,250 delivered lumens in the 4' unit



RUD SERIES

- 1ft, 2ft and 4ft lengths
- Surface bullnose unit offers up/down light distribution
- Available in 18, 16, and 14-gauge cold rolled steel or stainless steel
- Up to 11,000 delivered lumens in the 4' unit

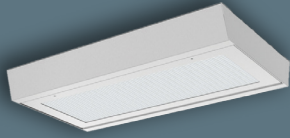


SUD SERIES

- 7in x 2ft and 4ft lengths
- Surface angled 2-aperture clamshell housing design
- Available in 18, 16 and 14-gauge cold rolled steel or stainless steel
- Up to 10,000 delivered lumens in the 4' unit

CORRIDOR LIGHTING: DOORFRAME

CEILING MOUNT



U.S. Patent No. 8,770,785

WARRIOR SERIES

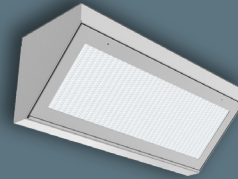
- 2ft and 4ft lengths
- Slope-sided narrow (14.50") and wide (16") options
- Available in 18, 16, and 14-gauge cold rolled steel or stainless steel
- Acrylic, polycarbonate and glass lens options
- Up to 11,500 delivered lumens in 4' wide unit



33 SERIES

- 2ft and 4ft lengths
- Straight-sided narrow (12") and wide (20") options
- Available in 18, 16, 14 and 12-gauge cold rolled steel or up to 14-gauge stainless steel
- Acrylic, polycarbonate and glass lens options
- Up to 9,000 delivered lumens in 4' wide unit

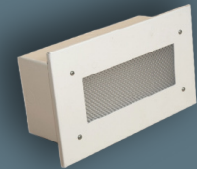
CORNER MOUNT



55 SERIES

- 8.5" x 1', 2' or 4' lengths
- Surface corner mount in 18, 16, 14 and 12-gauge cold rolled steel or up to 14-gauge stainless steel
- Acrylic, polycarbonate and glass lens options
- Up to 8,650 delivered lumens in 4' length

STEPLIGHTS



57S SERIES

- Recessed steplight; open or louver faceplate options
- 4000K White LED
- 18-, 16-, 14-Gauge cold rolled steel or 20- or 14-Gauge stainless steel
- Tamper-resistant Torx® head fasteners







WASHROOM AREAS

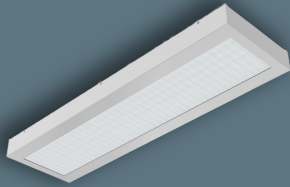
Washrooms in correctional facilities are areas of high activity, and the lighting must meet both practical and safety requirements.

Luminaires in these spaces must be water-resistant, easy to clean, and sealed to prevent damage to electrical components. Tamper-resistant and antiligature designs are essential to prevent misuse and maintain resident safety. Consistent, glare-free illumination enhances visibility for monitoring while supporting privacy and dignity.

By prioritizing durability and safety, shower area lighting promotes a secure, sanitary, and controlled environment that aligns with the operational demands of correctional facilities.

WASHROOM LIGHTING: CLAMSHELL

CEILING MOUNT



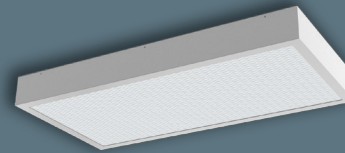
33M SERIES

- 2ft and 4ft lengths
- Straight-sided narrow (11") and wide (14") options
- Surface mount in 18, 16, 14, and 12-gauge cold rolled steel or up to 14-gauge stainless steel
- Acrylic, polycarbonate and glass lens options
- Up to 9,000 delivered lumens in the wide 4' unit



33L SERIES

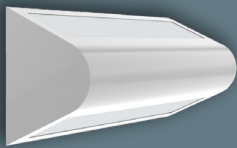
- 2ft and 4ft dimensions
- Straight-sided narrow (11") and wide (14") options
- Surface mount in 18, 16, 14, and 12-gauge cold rolled steel or up to 14-gauge stainless steel
- Acrylic, polycarbonate and glass lens options
- Up to 9,000 delivered lumens in the wide 4' unit



53M SERIES

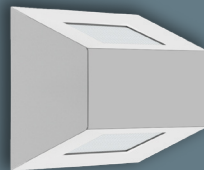
- 1x1, 1x2, 1x4, 2x2 & 2x4 dimensions
- Straight-sided surface mount in 18, 16, 14, and 12-gauge cold rolled steel or up to 14-gauge stainless steel
- Acrylic, polycarbonate and glass lens options
- Up to 25,000 delivered lumens in the 2x4

WALL MOUNT



RUD SERIES

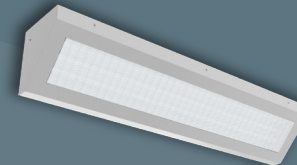
- 1ft, 2ft and 4ft lengths
- Surface bullnose unit offers up/down light distribution
- Available in 18, 16, and 14-gauge cold rolled steel or stainless steel
- Up to 11,000 delivered lumens in the 4' unit



SUD SERIES

- 7in x 2ft and 4ft lengths
- Surface angled 2-aperture clamshell housing design
- Available in 18, 16 and 14-gauge cold rolled steel or stainless steel
- Up to 10,000 delivered lumens in the 4' unit

CORNER MOUNT

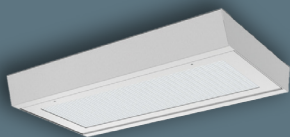


55M SERIES

- 8.5" x 1', 2' or 4' dimensions
- Surface corner mount in 18, 16, 14, and 12-gauge cold rolled steel or up to 14-gauge stainless steel
- Acrylic, polycarbonate and glass lens options
- Up to 8,250 delivered lumens in the 4' unit

WASHROOM LIGHTING: DOORFRAME

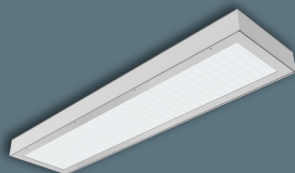
CEILING MOUNT



U.S. Patent No. 8,770,785

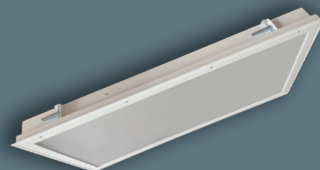
WARRIOR SERIES

- 2ft and 4ft lengths
- Slope-sided narrow (14.50") and wide (16") options
- Available in 18, 16, and 14-gauge cold rolled steel or stainless steel
- Acrylic, polycarbonate and glass lens options
- Up to 11,500 delivered lumens in 4' wide unit



33 SERIES

- 2ft and 4ft lengths
- Straight-sided narrow (12") and wide (20") options
- Available in 18, 16, 14 and 12-gauge cold rolled steel or up to 14-gauge stainless steel
- Acrylic, polycarbonate and glass lens options
- Up to 9,000 delivered lumens in 4' wide unit



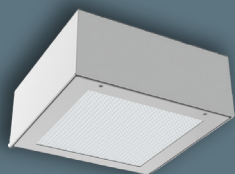
57R SERIES

- 1x2, 1x4, 2x2 and 2x4 dimensions
- Recessed ceiling mount; grid or flange
- Available in 18, 16, 14, and 12-gauge cold rolled steel or up to 14-gauge stainless steel
- Acrylic, polycarbonate and glass lens options
- Up to 25,000 delivered lumens in the 2x4



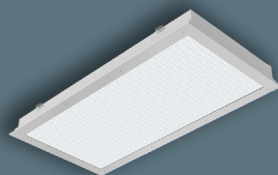
AURAMED CLASSIC HIGH ABUSE SERIES

- 1x4, 2x2 and 2x4 dimensions
- Recessed mounting; grid and flange installations
- Housing constructed of 18-, 16-, or 14-gauge cold rolled steel or stainless steel
- Lens secured with exclusive hold-down brackets for additional security



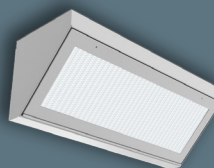
53 SERIES

- 1x1, 1x2, 1x4, 2x2 and 2x4 dimensions
- Inset doorframe design for surface mount installation
- Available in 18, 16, 14 and 12-gauge cold rolled steel or up to 14-gauge stainless steel
- Acrylic, polycarbonate and glass lens options
- Up to 25,000 delivered lumens in 2x4 high output unit



37M SERIES

- 1x2, 1x4, 2x2 and 2x4 dimensions
- Recessed flange installation with adjustable 90° swing arm system
- Available in 18, 16, 14, and 12-gauge cold rolled steel or up to 14-gauge stainless steel
- Acrylic, polycarbonate and glass lens options
- Up to 22,000 delivered lumens in the 2x4



55 SERIES

- 8.5" x 1', 2' or 4' lengths
- Surface corner mount in 18, 16, 14 and 12-gauge cold rolled steel or up to 14-gauge stainless steel
- Acrylic, polycarbonate and glass lens options
- Up to 8,650 delivered lumens in 4' length



DOWNLIGHTS

DLM6 SERIES

- 6" Aperture
- 16-Gauge cold rolled steel housing with extruded aluminum heat sink
- Acrylic, polycarbonate or tempered glass inner/outer lens options
- Up to 3,949 delivered lumens
- IP65 per IEC60598; IK10 Listed for impact

COOK COUNTY DEPARTMENT OF CORRECTIONS



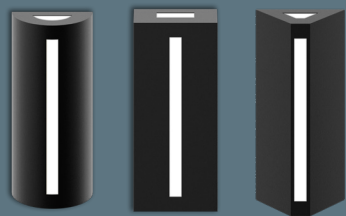
BUILDING FACADES

Building facade lighting plays a critical role in perimeter security. Proper lighting helps deter unauthorized access, ensures visibility for security personnel and surveillance cameras, and enhances safety for both residents and staff.

Exterior luminaires must provide bright, uniform illumination to eliminate dark zones that could conceal movement or activity. Tamper- and weather-resistant luminaires are essential to withstand exposure to rain, wind, and extreme temperatures, contributing to longer-lasting performance.

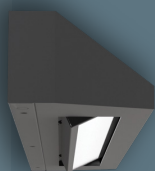
Energy-efficient dusk-to-dawn lighting controls enhance operational efficiency while maintaining 24/7 visibility. Facade lighting acts as a first line of defense, deterring unauthorized access and supporting continuous monitoring of the facility's exterior.

BUILDING FACADE



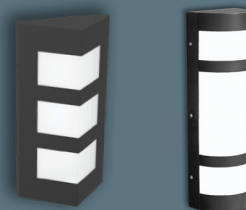
SCULPTURE SERIES

- 1ft, 2ft, 3ft and 4ft lengths
- Faceplates offered in triangle, round, and square styles
- Low profile, provides uplight, downlight and edgelit illumination
- Additional faceplate design patterns available



GATEWAY SERIES

- 1ft, 2ft, 3ft, 4ft and 6ft lengths
- Housing available in aluminum, cold rolled steel or stainless steel
- Patented field-adjustable optic (-25°, -12.5°, 0°, 12.5°, 25°)
- Frosted UV-Stabilized polycarbonate lens inside aluminum frame



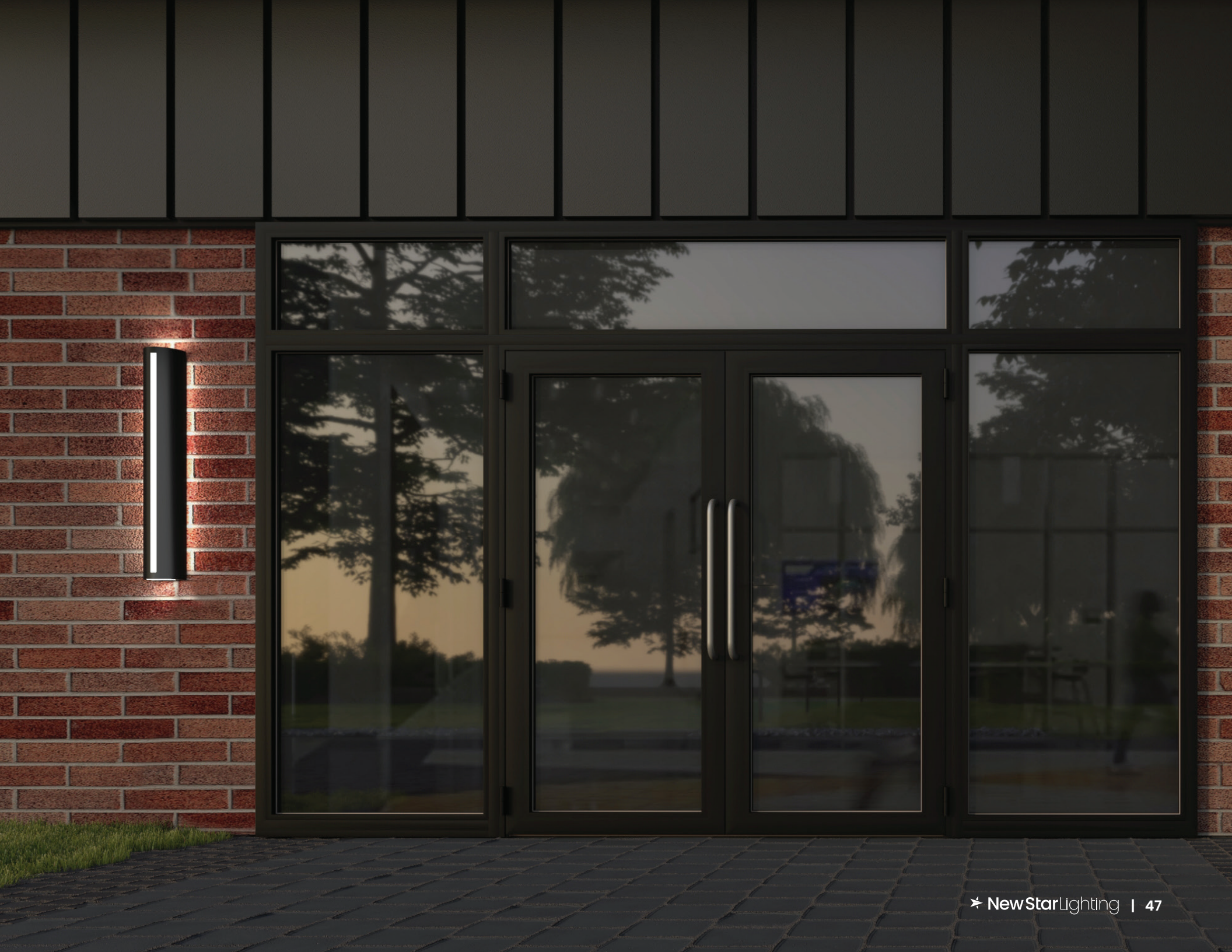
LAMPA SERIES

- 1ft, 2ft and 4ft length
- Die-formed, seam welded and ground smooth stainless steel, marine grade aluminum or cold rolled steel
- Opal UV-stabilized polycarbonate lens for maximum diffusion



SAFEGUARD WALL SERIES

- 12.5" Dia. round or 12.5" square shape with three different frame styles: open, half cutoff and grid
- Surface installation, ADA options available
- Opal UV-stabilized polycarbonate lens for maximum diffusion
- IP66 and IK10 listed







EXIT SIGNS & WALL PLATES

New Star Lighting offers a range of durable exit signs and wall plates designed specifically for the unique challenges of correctional facilities. Built to withstand abuse and tampering, these products provide clear, reliable guidance for emergency egress and enhance overall safety within secure environments.

Constructed with robust materials and available in various styles and configurations, our exit signs and wall plates meet the stringent demands of correctional use. With tamper-resistant features and compliance with applicable safety standards, these solutions ensure dependable performance in even the most demanding applications.

EXIT SIGNS & WALL PLATES



620 SERIES

- Single face or double face options
- 14-Gauge cold rolled steel
- Surface wall or ceiling installation
- Internal panel with stencil cut red or green letters and arrows



MODEX SERIES

- Single face with red or green lettering options
- 20-Gauge formed stainless steel housing
- Recessed installation. Suitable for modular walls
- Optional tamper-resistant Torx® head fasteners



ESCR SERIES

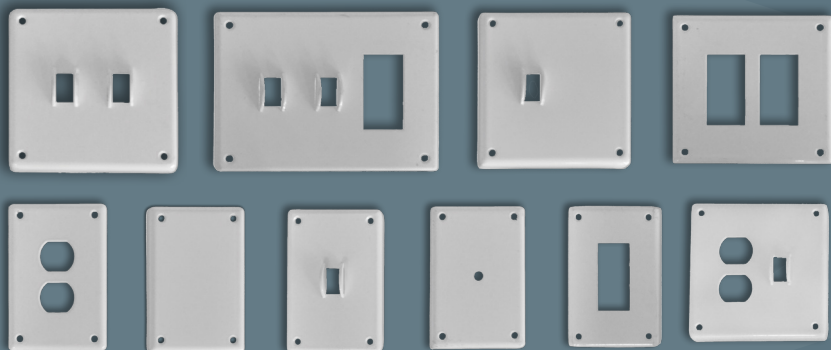
- Recessed mount installation
- Red or green legend
- Single face overlapping doorframe in 18-gauge cold rolled steel or 18-gauge brushed stainless steel
- .125 clear polycarbonate lens
- IP65 per IEC60598



ESCS SERIES

- Ceiling or wall surface mount installation
- Red or green legend, optional single or double face
- Inset doorframe in 20-gauge cold rolled steel or 20-gauge brushed stainless steel
- IP65 per IEC60598

WALL PLATES



SECURITY WALL PLATE SERIES

- 10-Gauge cold rolled steel for maximum security
- PW-poured concrete
- SB-steel and concrete block walls
- Baked white enamel finish





2225 W. Pershing Rd, Chicago, IL, 60609
(773) 847-1400
www.newstarlighting.com

© 2024, New Star Lighting. All rights reserved. Unauthorized duplication or distribution is prohibited. [12112024]