



**COMPLETECARE™ HEALTHCARE SOLUTIONS**



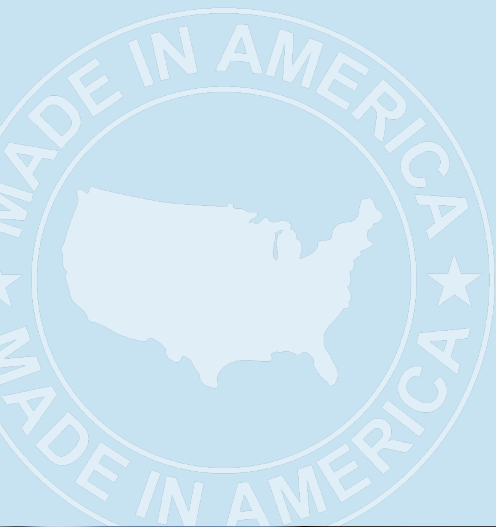




# TABLE OF CONTENTS

About New Star .....	4
CompleteCare™ .....	6
CompleteCare™ Applications .....	8
CompleteCare™ Newest Products .....	10
Patient Rooms .....	22
Patient Bathrooms .....	26
Fall Prevention™ .....	30
Corridors & Nurses' Stations .....	36
Exam Rooms .....	40
Surgical Suites .....	44
MRI Suites .....	50
PositiveCare™ Series .....	54
Exit & Emergency Series .....	68
DuraCare™ Behavioral Health .....	74
Exteriors .....	92
Tunable White .....	96
BIOS™ .....	98
Our Sustainability Story .....	100
Listing Icons .....	102





# PROUD TO BE AMERICAN-MADE

New Star Lighting takes pride in being an American-made company, with our products designed, engineered, and manufactured in the USA. Our fixtures comply with the Buy American Act (BAA) and Build America, Buy America Act (BABAA) requirements, ensuring quality craftsmanship while supporting domestic industries. By adhering to these standards, we provide reliable, durable lighting solutions that meet the highest regulatory and performance expectations.







On-site manufacturing provides complete control over every step of the production process, from design to assembly, delivering durable and reliable luminaires tailored to specific needs.

By conducting testing on-site, we streamline the development process, allowing us to bring products to market faster while maintaining the highest levels of reliability and excellence.





# COMPLETECARE™ FOR HEALTHCARE

For over 30 years, New Star Lighting has provided innovative lighting solutions for healthcare environments, from patient rooms to surgical suites. Our portfolio is thoughtfully designed to complement architectural aesthetics while meeting the complex demands of healthcare settings.

We recognize the critical role lighting plays in infection control, fall prevention, positive distraction techniques, and circadian entrainment for healing. Our luminaires are designed with both patients and caregivers in mind, enhancing comfort, efficiency, and well-being.

With a commitment to innovation and impact, we proudly offer CompleteCare™ by New Star Lighting, a comprehensive family of luminaires tailored for healthcare applications.







# APPLICATIONS

New Star Lighting delivers innovative solutions for diverse healthcare applications, combining safety, efficiency, and adaptability. In patient rooms and bathrooms, our luminaires deliver soothing, glare-free illumination to promote healing while enhancing fall prevention. Exam rooms benefit from bright, uniform lighting for accurate assessments, while corridors and nurses' stations rely on our fixtures for reliable, energy-efficient visibility to support continuous care.

For specialized spaces like surgical suites and MRI rooms, New Star Lighting offers precision-engineered solutions that meet the highest standards of performance and compatibility. By addressing the unique needs of healthcare environments, our durable, high-quality fixtures ensure safety, comfort, and efficiency throughout medical facilities.





**PATIENT BATHROOMS**



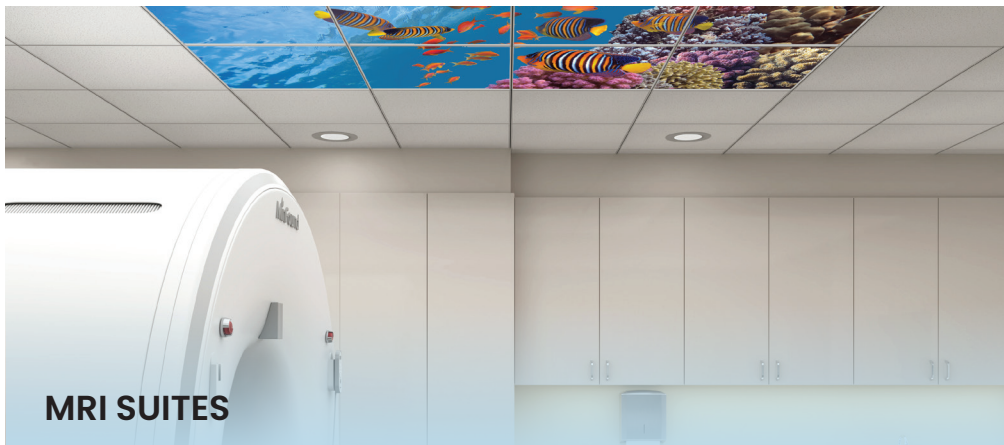
**FALL PREVENTION™**



**EXAM ROOMS**



**POSITIVECARE™ GRAPHICS**



**MRI SUITES**



**DURACARE™ BEHAVIORAL HEALTH**

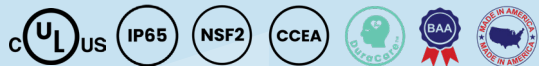


## WHAT'S NEW

# COMPLETECARE™ MULTI-FUNCTION ASYMMETRIC LINEAR SERIES

The CompleteCare™ Multi-Function Asymmetric Linear series offers best-in-class optics, with a narrow 3" aperture and integral ambient, exam, nightlight and reading functions. Transitioning seamlessly between functions, this architectural linear pair interfaces with a low voltage controller and provides effective layered task lighting for both the patient and staff.

- Narrow 3" aperture with best-in-class ambient, exam, reading and nightlight functions
- 4' or 6' Lengths, installed as a pair and mounted offset to the patient bed to provide comfortable, glare-free illumination for the patient
- Ambient nightlight is 585-595nm for circadian support
- Sealed for infection control, with IP65 listing and NSF2 for cleanability
- Controls and sensor-ready
- 3000K-4000K Lumen packages, Tunable White and BIOS options for circadian support
- DuraCare™ ligature-resistant version available for behavioral health applications



AMBIENT MODE



AMBIENT & EXAM MODE

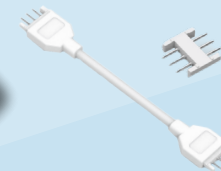


## WHAT'S NEW

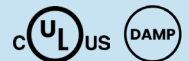
# COMPLETECARE™ UNDERCABINET SERIES

The CompleteCare™ Undercabinet Series provides touch-free operation with an on-board sensor that turns the unit on/off and dims, addressing infection control. It also allows CCT adjustability from 2700K-5000K to accommodate personal preference and visual comfort.

- Slim profile (.35" depth) available in five lengths: 11", 18", 23", 36", and 42"
- Standard button switch to adjust CCT: 2700K, 3000K, 3500K, 4000K and 5000K
- Touch-free ON/OFF and Dimming controls for infection control
- Linking connectors in 6", 12" and 24" enables easy connection for row mount
- 30W, 36W or 60W Wall Plug or Remote Driver options. Can connect up to 123.5" per RDE



Available with end-to-end connectors, or linking connectors in 6", 12" or 24" lengths



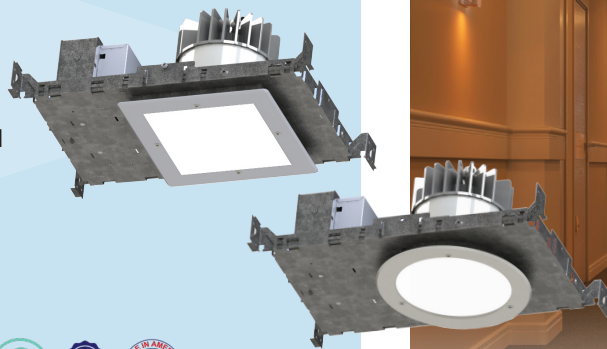


## WHAT'S NEW

# COMPLETECARE™ DOWNLIGHT SERIES

The CompleteCare™ Downlight Series is available in a 4" and 6" diameter with round and square trims to complement any architectural style. These modern designs are sealed and are suitable for multiple specialty markets including healthcare, behavioral health, cleanroom, and high abuse – all with appropriate listings for each application.

- 4" and 6" sealed recessed downlight, round or square trim options
- White LED available in 3000K – 5000K, Tunable White, BIOS, RGBW and Narrow Spectrum Green, Amber, Red, and Blue
- Sealed for infection control with an IP65 and NSF2 listing for cleanability
- 80 or 90 CRI options
- All exposed surfaces painted with antimicrobial finish
- Trimless option available
- DuraCare™ ligature-resistant version available for behavioral health applications



**PATIENT BATHROOMS**



**FALL PREVENTION™**





**MRI SUITES**



**WAITING AREAS**



**NURSES STATIONS & CORRIDORS**



**SURGICAL SUITES**









## WHAT'S NEW

# POSITIVECARE™ FRAME SERIES

Triangular, Rectangle, and Oval organic shapes, all featuring choice of amber or white LED nightlights. The Frame's low-profile styles with tapered frames are 1.06" deep. These sleek modern form factors can accommodate both Photography and Designer Graphic images, or can be modified with custom graphics.

- Tapered diecast architectural frame provides ligature-resistance, choice of RAL finishes
- Low profile - 1' height at 1.06" deep
- Opal polycarbonate lens. Can integrate PositiveCare™ graphics
- Choice of Amber (585-595nm) or White LED nightlight for Fall Prevention
- DuraCare™ Behavioral Health version available



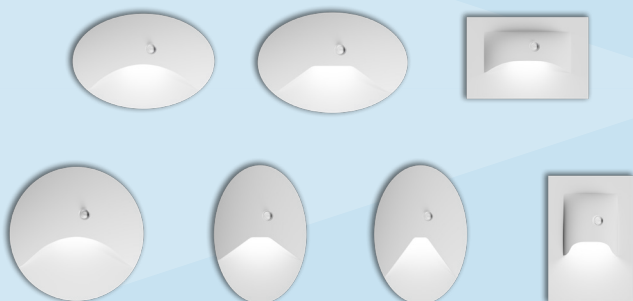


## WHAT'S NEW

# COMPLETECARE™ STEPLIGHT SERIES

Updated modern steplights for patient rooms, corridors, lobbies, and more. These form factors complement today's architecture and provide low level illumination for safe navigation throughout the facility.

- 90° Cut-off obstructs light trespass
- Built for durability; diecast faceplate with polycarbonate lens
- Available in field-selectable White (2700K-5000K) Amber, Red or Blue LED
- Selectable sensor with settings for Photo/Motion/Off
- Designed to install a standard j-box (by others)
- DuraCare™ Behavioral Health version available
- All models are available in a thru-wall version
- New Star Promise Lifetime Warranty









## WHAT'S NEW

# COMPLETECARE™ VANITY MIRROR SERIES

CompleteCare™ Vanity Mirrors are made of eco-friendly copper-free mirror material, which is the most corrosion-resistant, scratch-free and durable material available. Copper-free mirrors are made to last, are better for the environment, and will still stand the test of time.

- Low profile, Rectangle and Oval styles. Surface mount for standard installations, and semi-recessed version with Torx® fasteners for Behavioral Health applications
- Durable copper-free polycarbonate mirror with scratch-resistant finish
- White LEDs in 3000K, 3500K and 4000K (90 CRI), as well as red rendering (R9>50) for proper skin tone evaluation
- Amber nightlight standard (585nm – 595nm)
- Optional fixed 5° tilt bracket available (surface mount only)
- Sealed for infection control with an IP65 and NSF2 listing for cleanability
- Antimicrobial RAL frame finishes available
- DuraCare™ ligature-resistant version available for behavioral health applications
- New Star Promise Lifetime Warranty





## WHAT'S NEW

# COMPLETECARE™ WALL PLATE SERIES

A more architectural approach, the CompleteCare™ wall plates are available in stainless steel material with tapered corners and the option of Torx® fasteners. With the push of a button, the patient or caretaker can control their light levels of multiple functions in the patient room.

- Controls up to five separate lights/loads
- Quick on/off of any light (load)
- Provides easy access for clinicians
- Seamlessly integrates with any nurse call system
- Allows staff to dim the lights when used with New Star CompleteCare™ Healthcare Luminaires
- DuraCare™ Behavioral Health version available with Torx® fasteners











# PATIENT ROOMS

CompleteCare™ patient room luminaires provide efficient, layered lighting in modern form factors. Sleek, low-profile styles replace yesterday's institutional approach and elevate healthcare lighting to meet today's design standards.

Beyond aesthetics, our best-in-class optics puts light where it's needed while maintaining visual comfort. With smaller trims and updated optics, CompleteCare™ patient room luminaires deliver glare-free illumination in more modern profiles.

Our offering considers the users of the space; simple operation and controls interface for the patient, appropriate light levels for the caretakers to facilitate their procedures, and easy installation and maintenance for the facility managers. We also address infection control with Ingress Protection ratings, and cleanability with National Sanitation Foundation listings.



# COMPLETECARE™ PATIENT ROOMS

New Star Lighting offers many options for patient room illumination, all with the ability to integrate Low Voltage Control relays to work in conjunction with pillow speakers, wall plates or other nurse call systems. Whether mounted on the headwall, over the patient, or asymmetric to the bed, CompleteCare™ has all types of luminaires to meet any project need.

## MULTI-FUNCTION CEILING



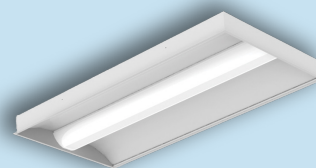
### ASYMMETRIC LINEAR SERIES

- 4' and 6' lengths
- Ambient, Exam, Reading & Nightlight functions
- Dimmable to 1%
- Controls and sensor-ready
- 3000K-4000K Lumen packages, Tunable White, and BIOS options for circadian support



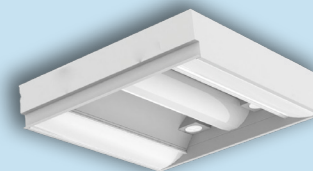
### LUMANIQUE SERIES

- 1x4, 2x2 & 2x4 dimensions
- Ambient, Exam, Reading & Nightlight functions
- 3000-5000K options
- Dimmable to 1%
- Tunable White & BIOS



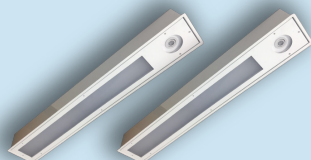
### AURAMED CONTEMPO SERIES

- 1x4, 2x2 & 2x4 dimensions
- Ambient, Exam, Reading & Nightlight functions
- 3000-5000K options
- Dimmable to 1%
- Tunable White & BIOS



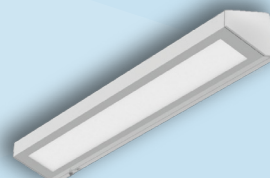
### STARMED DOS SERIES

- 1x4, 2x2 & 2x4 dimensions
- Ambient, Exam, Reading & Nightlight functions
- 3000-5000K options
- Dimmable to 1%
- Tunable White & BIOS



### COMPRO SERIES

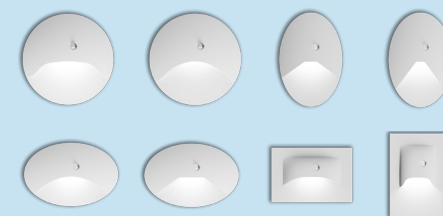
- 1x4, 2x2 & 2x4 dimensions
- Ambient, Exam, Reading & Nightlight functions
- 3000-5000K options
- Dimmable to 1%
- Tunable White & BIOS



### STARMED HEADWALL SERIES

- 1x4, 2x2 & 2x4 dimensions
- Ambient, Exam, Reading & Nightlight functions
- 3000-5000K options
- Dimmable to 1%
- Tunable White & BIOS

## STEPLIGHTS



### STEPLIGHT SERIES

- Offered in oval, rectangle, and round styles
- Each style offered in vertical and horizontal faceplates
- White 2700-5000K, Amber, Red, and Blue LED options
- Selectable sensor with settings for Photo/Motion/Off







# COMPLETECARE PATIENT ROOMS

## SCONCES



### COMPLETECARE™ FRAME SERIES

- Tapered diecast aluminum housing frame, and heavy-weight, heavy-gauge steel baseplate
- 1' height at 1.06" deep
- Field selectable CCT: 2700K, 3000K, 3500K, 4000K & 5000K
- Amber (585nm-595nm) or White LED nightlight options

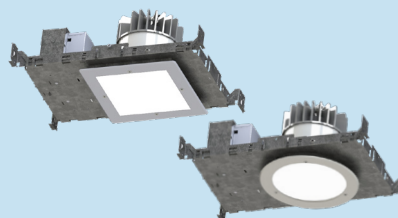
## UNDERCABINET



### COMPLETECARE™ UNDERCABINET SERIES

- Slim profile - 0.35" depth
- 5 lengths - 11"-42"
- Touch-free on/off and dimming
- Field selectable CCTs: 2700-5000K
- Remote driver or 120V cord & plug

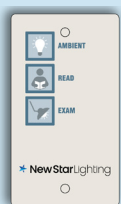
## DOWNLIGHTS



### COMPLETECARE™ DOWNLIGHT SERIES

- 4" and 6" dimensions
- Round and square trim options
- 3000K, 3500K & 4000K options
- 80 or 90 CRI options
- IP65 and NSF2 rated

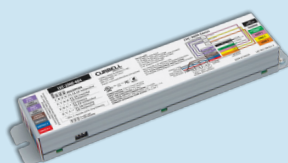
## WALL PLATES



### COMPLETECARE™ WALL PLATE SERIES

- Controls up to five separate lights/loads
- Quick on/off of any light (load)
- Seamlessly integrates with any nurse call system
- Allows staff to dim lights when used with DuraCare™ luminaires

## CONTROLLERS



### COMPLETECARE™ LOW VOLTAGE SERIES

- Ability to control lights with multiples modes of operation
- 0-10V dimming or non-dimming options
- 120-277 VAC
- Allows control from a pillow speaker, bed side rail or wall switch













# PATIENT BATHROOMS

Patient safety while navigating to and from the bathroom is a top design consideration in healthcare. CompleteCare™ patient bathroom luminaires address Fall Prevention by providing proper illumination for safe navigation without circadian disruption.

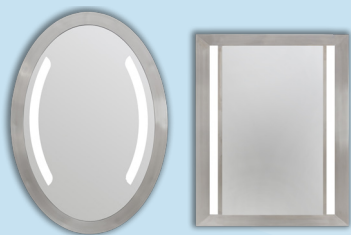
Like the patient room, lighting in the bathroom should be layered; providing high vertical illumination at the vanity for facial modeling, dimmable general ambient lighting that won't interrupt a patient's circadian system, and lighting with high R9 values for skin tone evaluation by the caretaker are all important factors in this space.

As with other critical areas, the luminaires should be sealed for infection control and cleanable to prevent Hospital Acquired Infections (HAIs). With exposure to showers and wash basins, the luminaires should also be sealed and corrosion-resistant for this application.

# COMPLETECARE™ PATIENT BATHROOMS

Sink basins, showers, and commodes are common areas for bacteria and viruses to propagate. New Star's collection of luminaires are sealed for both infection control and overall cleanability. They also provide switchable lighting, from white LEDs during the day to soft amber at night, to address Fall Prevention™.

## MIRRORS



### VANITY MIRROR SERIES

- Low profile, surface mount mirror in Oval or Rectangle
- Corrosion-resistant, copper-free provides clear imaging, high reflectance and better durability
- Amber or White LED highlight

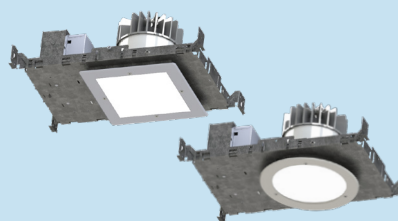
## SCONCES



### COMPLETECARE™ FRAME SERIES

- Tapered diecast aluminum housing frame, and heavy-weight, heavy-gauge steel baseplate
- 1' height at 1.06" deep
- Field selectable CCT: 2700K, 3000K, 3500K, 4000K & 5000K
- Amber (585nm-595nm) or White LED highlight options

## DOWNLIGHTS



### COMPLETECARE™ DOWNLIGHT SERIES

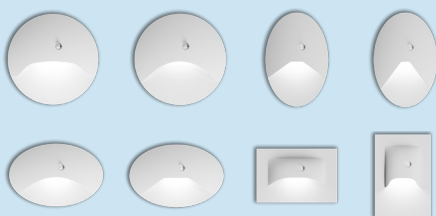
- 4" and 6" dimensions
- Round and square trim options
- 3000K, 3500K & 4000K options
- 80 or 90 CRI options
- IP65 and NSF2 rated



### COMPLETECARE™ AMBER DOWNLIGHT SERIES

- 4" and 6" sealed recessed trimless and canless downlight
- Field-selectable white LED (2700K-5000K)
- Two circuit-dimmable white and dimmable amber
- Remote driver

## STEPLIGHTS



### STEPLIGHT SERIES

- Offered in oval, rectangle and round styles
- Each style offered in vertical and horizontal faceplates
- White 2700-5000K, Amber, Red and Blue LED options
- Selectable sensor with settings for Photo/Motion/Off



### HNL SERIES

- Four faceplate options: horizontal, vertical, louver and open frame
- 3000K, 4000K, 5000K and Amber LED options
- Optional photocell or occupancy sensor with select faceplates





# FALL PREVENTION™

We're following the science.

Fall prevention is one of the top issues in healthcare and can have a major economic impact to a facility. Statistics show that up to one million hospitalized patients fall each year, with over a third of those falls resulting in serious injuries<sup>1</sup> such as fractures, lacerations or internal bleeding. This leads to increased healthcare utilization, which leads to added costs.

Many factors contribute to falls in nighttime settings. These include:

- Adapting from darkness to bright light or vice versa
- Too little light or too much light
- Unstable balance when going from a sit to stand position
- Unstable balance when trying to turn on a light to get from bed to bathroom
- Not being able to see obstacles on the floor in their path

Research shows that 20–30% of falls can be prevented by assessing risks and intervening to reduce these risks<sup>2</sup>. New Star Lighting is committed to reducing the incidence of falls with our CompleteCare Fall Prevention™ portfolio that includes amber nightlights designed to support the research around visual and circadian needs. Finally – a lighting strategy that supports fall prevention research for Assisted Living and other healthcare applications.

1. Centers for Disease Control and Prevention. Older Adult Falls Data. Found at <https://www.cdc.gov/falls/dataresearch/index.html>

2. Morris R, O'Riordan S. Prevention of falls in hospital. Clin Med (Lond). 2017 Jul;17(4):360–362. doi: 10.7861/clinmedicine.17-4-360. PMID: 28765417; PMCID: PMC6297656.







## WHAT'S NEW

# COMPLETECARE™ DOOR SURROUND SERIES

Based on lab and field studies (Figueiro et al, 2008, 2011, 2012), the CompleteCare™ Door Surround provides an architectural doorway solution that supports fall prevention for patients or older adults across a range of healthcare facilities. The low luminance amber Door Surround is meant to act as a guiding light at night, in contrast to a dark room. It is visible enough to be seen, but not so bright as to prevent the person from falling back to sleep. Robust in construction, the Door Surround will stand up to wheelchairs, walkers, and maintenance abuse over time.

- Surface mount linear extrusions in customizable lengths to outline one, two or three sides of a door
- Considers viewing angle from patient bed to bathroom door, providing a soft line of light without pixelation
- Amber LED; circadian supportive wavelengths at 585-595nm
- Low luminance(<600cd/m2), low glare and dimmable to prevent sleep disruption
- Die cast 90° corner connector with integrated low voltage PIR motion sensor. Features a 10' sensing radius that switches on for 30 seconds or until no motion is detected

Patent Pending







## WHAT'S NEW

# COMPLETECARE™ AMBER DOWNLIGHT SERIES

The CompleteCare™ Amber Downlight is available in a 4" and 6" round trim, designed with two circuit dimmable white and amber LEDs to help navigate bathrooms, corridors, kitchens and other applications. The shallow recessed downlight offers a slim, IC-rated design with an integrated junction box, eliminating the need for a separate housing that makes it ideal for shallow plenums.

- 4" and 6" sealed recessed trimless and canless downlight
- Field-selectable white LED CCT: 2700K - 5000K
- Two circuit; dimmable white and dimmable amber
- 90 CRI standard
- Remote driver
- NSF2 Splash Zone / Non-Food Zone and IK10 Listed

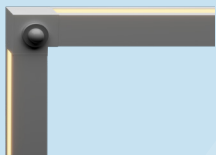


Patent Pending



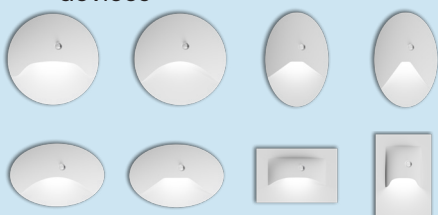
# COMPLETECARE FALL PREVENTION™

The New Star Lighting Fall Prevention collection of luminaires switch from white daytime lighting to soft amber nightlight, enabling safe navigation with minimal sleep interruption. Our vanity mirrors, downlights, steplights, and even decorative sconces all feature narrow spectrum amber nightlight options that provide effective low-level luminance with minimal glare to safely guide patients and residents to the bathroom, down corridors or into kitchens without disrupting sleep-wake cycles.



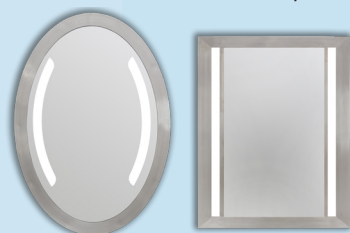
## COMPLETECARE™ DOOR SURROUND SERIES

- Surface mount installation; Field-customizable lengths of extrusion
- Activated by remote sensor
- Dimmable Amber (585-595nm) at low luminance levels
- IK10 Listed - Designed to withstand impact by wheelchairs and other walking devices



## STEPLIGHT SERIES

- Offered in oval, rectangle and round styles
- Each style offered in vertical and horizontal faceplates
- White 2700-5000K, amber, red and blue LED options
- Selectable sensor with settings for Photo/Motion/Off



## VANITY MIRROR SERIES

- Low profile, semi-recessed mirror in Oval or Rectangle
- Corrosion-resistant, copper-free provides clear imaging, high reflectance and better durability
- Amber or White LED nightlight



## HNL SERIES

- Four faceplate options: horizontal, vertical, louver and open frame
- 3000K, 4000K, 5000K and Amber LED options
- Optional photocell or occupancy sensor with select faceplates



## COMPLETECARE™ AMBER DOWNLIGHT SERIES

- 4" and 6" sealed recessed trimless and canless downlight
- Field-selectable white LED (2700K-5000K)
- Two circuit-dimmable White and dimmable Amber
- Dimmable White to Amber
- Remote driver



## COMPLETECARE™ FRAME SERIES

- Tapered diecast aluminum housing frame, and heavy-weight, heavy-gauge steel baseplate
- 1' height at 1.06" deep
- Field selectable CCT: 2700K, 3000K, 3500K, 4000K & 5000K
- Amber (585nm-595nm) or White LED nightlight options





As day turns to night, the CompleteCare Fall Prevention™ portfolio provides safe navigation without circadian disruption.





- ← Anesthesiologists
- ← Orthodontists
- ← Nose and Throat
- ← Nurses More
- ← Family Practice
- ← Operating Room



Psychiatry  
Dr. Kat





# CORRIDORS & NURSES' STATIONS

Corridors and Nurses' Stations are high traffic circulation areas that should be evenly illuminated with durable luminaires. Best practices for illuminating a patient corridor includes an asymmetric approach, rather than direct overhead illumination, down the center of the corridor so a patient doesn't look directly into the luminaire as they're transported on a gurney or in a wheelchair. Additionally, accent lighting and steplights provide soothing, layered lighting in these applications.

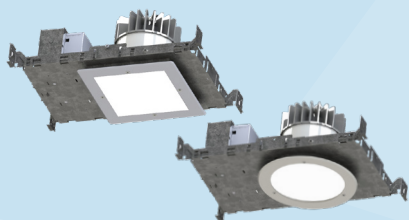
The Nurses' Stations are an information hub for caretakers, family, and patients. Luminaires should be versatile, with adjustability for day shift and night shift workers. They should also provide adequate task lighting and consider glare from computer monitors and other equipment.

Lighting should also facilitate wayfinding in these applications.

# COMPLETECARE™ CORRIDORS & NURSES' STATIONS

From wayfinding to task, general illumination to egress, New Star lighting offers a complete package of luminaires designed for corridors and nurses' stations. These luminaires are available in Tunable White to support both day and night shift workers or, like our undercabinet series, are field selectable to allow staff to work within their own color temperature preferences. We offer flexibility to support ever-changing staff needs.

## DOWNLIGHTS



### COMPLETECARE™ DOWNLIGHT SERIES

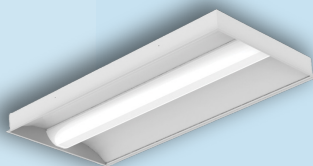
- 4" and 6" dimensions
- Round and square trim options
- 3000K, 3500K & 4000K options
- 80 or 90 CRI options
- IP65 and NSF2 rated

## RECESSED EXIT SIGNS



### MODEX™ SERIES

- Single face with red or green lettering options
- 20-Gauge formed stainless steel housing
- Recessed installation. Suitable for modular walls
- Optional tamper-resistant Torx® head fasteners



### AURAMED CONTEMPO SERIES

- 1x4, 2x2 & 2x4 dimensions
- Ambient, Exam, Reading & Nightlight functions
- 3000-5000K options
- Dimmable to 1%
- Tunable White & BIOS



### COMPLETECARE™ EDGELIT RECESSED SERIES

- Single face or double face with red or green lettering options
- Recessed installation
- Black or white powder-coated finishes available
- Dual 120/277 voltage standard

## UNDERCABINET



### COMPLETECARE™ UNDERCABINET SERIES

- Slim profile - 0.35" depth
- 5 lengths - 11"-42"
- Touch-free on/off and dimming
- Field selectable CCTs: 2700-5000K
- Remote driver or 120V cord & plug

## WALL MOUNT EXIT SIGNS



### COMPLETECARE™ CCEX SERIES

- Universal single/double face
- Field selectable Red or Green LED
- Recessed or surface installation
- Snap-out chevron directional indicators
- Dual 120/277 voltage

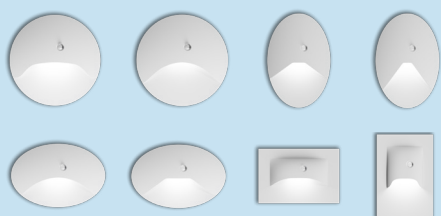
## SCONCES



### COMPLETECARE™ FRAME SERIES

- Tapered diecast aluminum housing frame, and heavy-weight, heavy-gauge steel baseplate
- 1' height at 1.06" deep
- Field selectable CCT: 2700K, 3000K, 3500K, 4000K & 5000K
- Amber (585nm-595nm) or White LED highlight options





## STEPLIGHT SERIES

- Offered in oval, rectangle and round styles
- Each style offered in vertical and horizontal faceplates
- White 2700-5000K, Amber, Red and Blue LED options
- Selectable sensor with settings for Photo/Motion/Off



## COMPLETECARE™ EDGELIT SERIES

- Single face or double faced with red or green lettering options
- Extruded aluminum housing
- Black or white powder-coated finishes available
- Dual 120/277 voltage standard











# EXAM ROOMS

Exam rooms are often simple in layout, consisting of the exam bed and a workstation with a few chairs. Lighting in the exam room can be used to calm a patient, with soothing dimmable lighting for general ambient prior to the exam, and high-level exam function for the doctors. Additionally, it should provide high R9 values for color rendition, be glare-free, and adjustable.

Typically, additional medical exam lights that provide higher footcandle levels are also used. These typically have adjustable intensity and focus.

Proper task illumination at the sink area and workspace are also typically used. Even illumination allows a caretaker to enter critical notes in a patient's file or review scans. It should be positioned both over a wash basin and over the work plane with proper cutoff to minimize glare.

# COMPLETECARE™ EXAM ROOMS

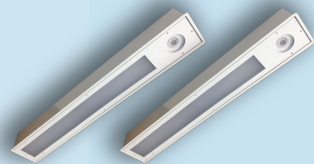
Exam rooms often have a simple layout but require a layered lighting approach. Soft, even ambient illumination aids in putting a patient at ease. While staff need the ability to easily switch to high output exam lighting with high R9 values for skin tone evaluation.

## MULTI-FUNCTION CEILING



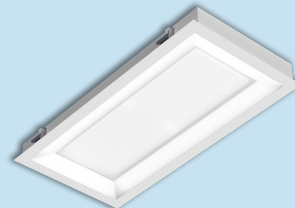
### ASYMMETRIC LINEAR SERIES

- 4' and 6' lengths
- Ambient and Exam functions
- Dimmable to 1%
- Controls and sensor-ready
- 3000K-4000K Lumen packages, Tunable White, and BIOS options for circadian support



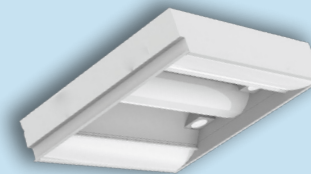
### COMPRO SERIES

- 1x4, 2x2 & 2x4 dimensions
- Ambient and Exam functions
- 3000-5000K options
- Dimmable to 1%
- Tunable White & BIOS



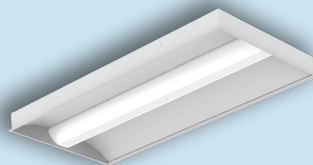
### LUMANIQUE SERIES

- 1x4, 2x2 & 2x4 dimensions
- Ambient and Exam functions
- 3000-5000K options
- Dimmable to 1%
- Tunable White & BIOS



### STARMED DOS SERIES

- 1x4, 2x2 & 2x4 dimensions
- Ambient and Exam functions
- 3000-5000K options
- Dimmable to 1%
- Tunable White & BIOS



### AURAMED CONTEMPO SERIES

- 1x4, 2x2 & 2x4 dimensions
- Ambient and Exam functions
- 3000-5000K options
- Dimmable to 1%
- Tunable White & BIOS

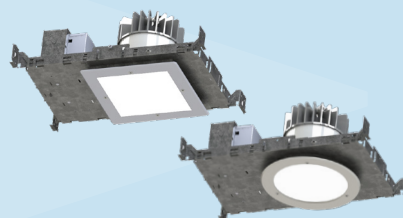
## UNDERCABINET



### COMPLETECARE™ UNDERCABINET SERIES

- Slim profile - 0.35" depth
- 5 lengths - 11"-42"
- Touch-free on/off and dimming
- Field selectable CCTs: 2700-5000K
- Remote driver or 120V cord & plug

## DOWNLIGHTS



### COMPLETECARE™ DOWNLIGHT SERIES

- 4" and 6" dimensions
- Round and square trim options
- 3000K, 3500K & 4000K options
- 80 or 90 CRI options
- IP65 and NSF2 rated













# SURGICAL SUITES

To complement the high-powered exam lighting typically used in a surgical suite, CompleteCare™ offers supplemental lighting for zonal lighting in the surgical suite.

The lighting should provide visual clarity and comfort to help reduce eye fatigue. The general lighting should provide excellent color rendering and closely match in chromaticity. It should also be sealed for infection control (IP65), meet the National Sanitation Foundation Splash Zone/Non-Food Zone (NSF2) listing for cleanability, and meet the stringent Military Specifications for safe operation.

The lighting levels should deliver up to 300fc at the operating table, 200fc for general ambient illumination, and 100fc at the surgical prep and cleanup areas. If preferred, narrow spectrum green LED lighting can be used, particularly for surgeries that rely on monitoring equipment, as in laparoscopic surgeries.

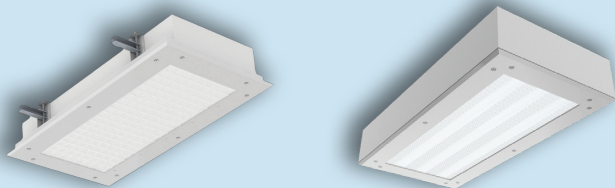
# SUPPLEMENTAL SURGICAL SERIES

CompleteCare supplemental surgical suite lighting provides a zonal approach to the surgical suite, with symmetric/asymmetric distributions to direct light on the bed, at the surgical prep and cleanup areas, and around the perimeter of the room. It is designed to provide uniform, glare-free illumination between the zones to prevent eye fatigue during long procedures. Can also be used in Hybrid Operating Rooms where EMI is a concern.

## Features:

- 4" and 6" sealed recessed downlight, round or square trim options
- StarSurgical recessed and surface, in 1x2, 1x4, 2x2 and 2x4 dimensions
- Available in 3500K, 4000K, and 5000K
- Sealed for infection control with an IP65 and NSF2 listing for cleanability. Lay-in fixtures also suitable for Biosafety Labs (BSL) rated 1-4 when specifying NSF Protocol 442 (P442) rating
- Compliant with MIL STD. 461G Fixed Navy/Air Force standards for Radiated (RE-102) and Conducted (CE-102) emissions
- All exposed surfaces painted with antimicrobial finish

## SURGICAL TROFFERS



## STARSURGICAL RECESSED & SURFACE SERIES

- 1x2, 1x4, 2x2 & 2x4 dimensions
- Recessed or Surface mount
- 3500-5000K options
- Symmetric/Asymmetric lenses
- Up to 25,000 delivered lumens

## SURGICAL DOWNLIGHTS



## COMPLETECARE SURGICAL 4" & 6" DOWNLIGHT SERIES

- 4" and 6" dimensions
- Round and square trim options
- 3000K, 3500K & 4000K options
- 80 or 90 CRI options
- IP65 and NSF2 rated







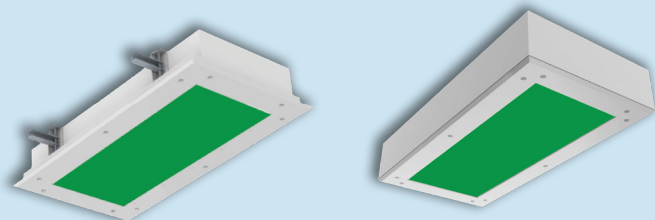
# NARROW SPECTRUM SURGICAL SERIES

Narrow spectrum green (540nm) has been shown to reduce glare and improve contrast of an image on surgical monitoring equipment during laparoscopic procedures. It can also be safely used around the surgical prep and cleanup areas without compromising the surgeon's line of sight. Further, green supplemental lighting reduces "afterimage" – the visual effect that occurs when the eye is exposed to something bright, causing a lingering image to appear in the same location as the original object.

## Features:

- 4" and 6" sealed recessed downlight, round or square trim options
- StarSurgical recessed and surface, in 1x2, 1x4, 2x2 and 2x4 dimensions
- Available with 540nm Green LEDs or a combination of 540nm Green/White LEDs (White is offered in 3500K, 4000K and 5000K)
- Sealed for infection control with an IP65 and NSF2 listing for cleanability
- Compliant with MIL-STD. 461G Fixed Navy/Air Force standards for Radiated (RE-102) and Conducted (CE-102) emissions
- All exposed surfaces painted with antimicrobial finish

## GREEN SURGICAL TROFFERS



### STARSURGICAL RECESSED & SURFACE SERIES

- 1x2, 1x4, 2x2 & 2x4 dimensions
- Recessed or Surface mount
- 540nm Green LED
- 3500-5000K White LED options
- Symmetric/Asymmetric lenses
- Up to 18,750 delivered lumens

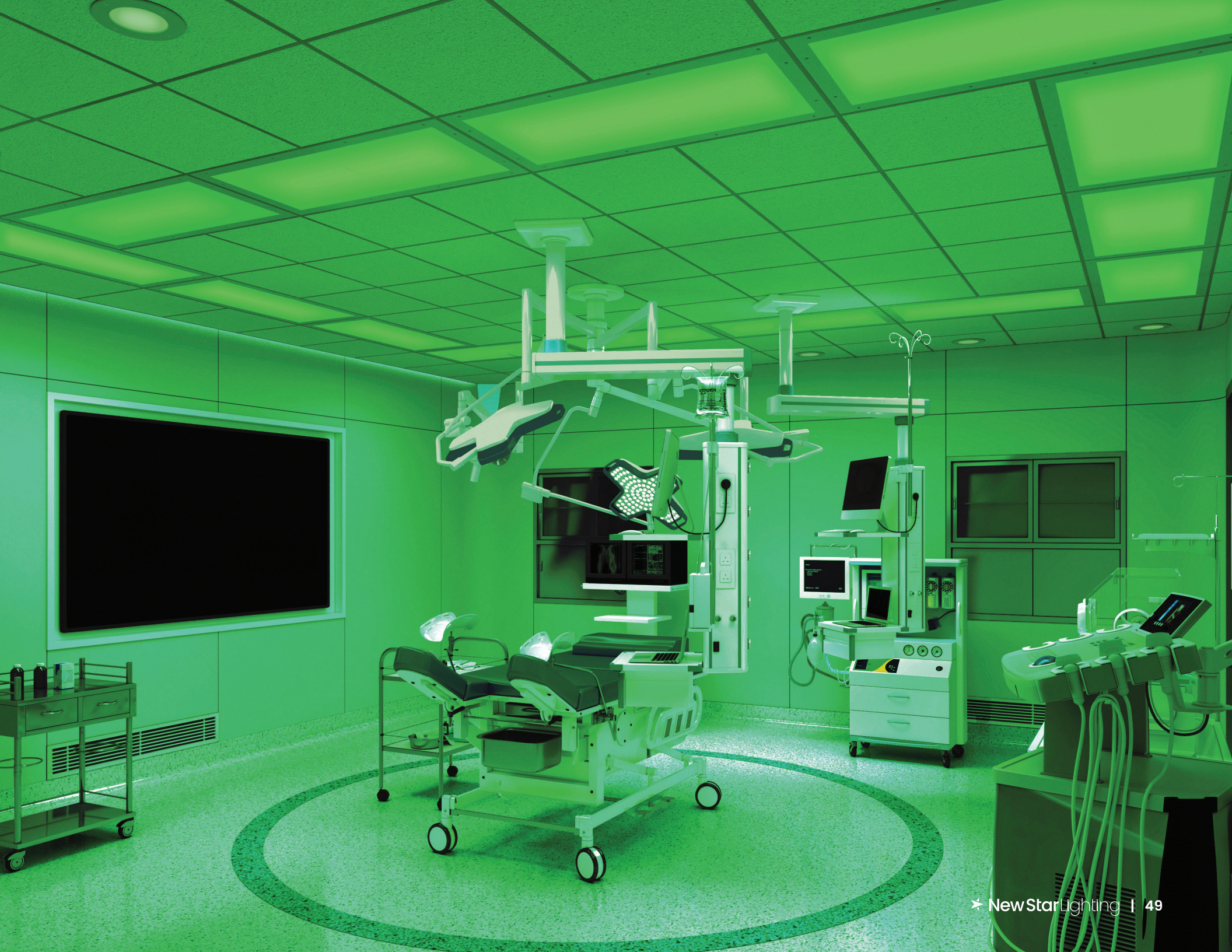
## GREEN SURGICAL DOWNLIGHTS



### COMPLETECARE SURGICAL 4" & 6" DOWNLIGHT SERIES

- 4" and 6" dimensions
- 540nm Green LED
- Round and square trim options
- 3000K, 3500K & 4000K options
- 80 or 90 CRI options
- IP65 and NSF2 rated









MinFound





# MRI SUITES

The MRI Suite consists of three distinct rooms: the imaging room, the control room, and the equipment room, each with their own lighting and room requirements.

The imaging room, also referred to as the magnet room, requires non-ferrous construction materials. Because electromagnetic interference is a concern, luminaires should also meet MIL STD. 461G to ensure safe operation in that space. The imaging room can be very intimidating for a patient, so dimmable ambient light and luminaires that incorporate graphics or other biophilic elements help distract them from an otherwise stressful procedure.

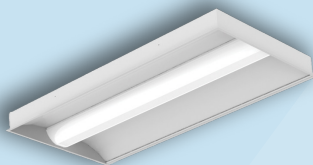
The control room is where the staff operates the imaging equipment. Task lighting and general ambient lighting is required.

The equipment room is the service area for any remote wiring or components, and general illumination is acceptable for that room.

New Star Lighting has solutions for the entire MRI Suite.

# COMPLETECARE MRI SUITES

The CompleteCare MRI family includes dimmable, general ambient lighting, and task lighting for the staff to create a comfortable experience for the patient. PositiveCare graphic image products can also be used in the MRI suite for distraction. These products are tested for radiated and conducted emissions to ensure safe operation in the space.



## AURAMED CONTEMPO MRI SERIES

- Non-ferrous aluminum housing & components
- 1x1, 1x2, 1x4, 2x2, and 2x4 dimensions
- CCTs: 3000K–5000K
- Grid installation with an option flange kit



## COMPLETECARE™ MRI DOWNLIGHT SERIES

- Non-ferrous aluminum construction
- 4" and 6" Round and Square trim options
- Suitable for Non-IC
- 3000–4000K White LED options
- Dimmable to 1%
- Medium & Wide distribution options



## COMPLETECARE™ UNDERCABINET SERIES

- Non-Ferrous construction
- Slim profile – 0.35" depth
- 5 Lengths – 11" – 42"
- Touch-free on/off and dimming
- CCT selectable: 2700K–5000K
- Remote Driver or 120V cord & plug



## COMPLETECARE™ MRI TILES

- Non-ferrous extruded construction
- 1x1, 1x4, 2x2, and 2x4 dimensions
- CCTs: 3000K–5000K
- Up to 7900 delivered lumens in 2x4



## POSITIVECARE™ OVERLAPPING GRID SERIES

- 2x2, 2x4 and 4x4 dimensions
- Static or Tunable White LED
- Lenses overlap grid, providing large-scale mural without frames
- PositiveCare™ Graphics options available



## POSITIVECARE™ SKYLITE SERIES

- 1x1, 2x2, 2x4 and 4x4 dimensions
- Static or Tunable White LED
- Lenses lay into grid, providing skylight appearance
- PositiveCare™ Graphics options available



## POSITIVECARE™ FRAME SERIES

- 1' height at 1.06" deep
- Field selectable CCT: 2700K, 3000K, 3500K, 4000K & 5000K
- Amber (585nm–595nm) or White LED highlight options
- Refer to page 58 for more information on this product













## POSITIVECARE™ SERIES

Designing environments with daylight, views of nature, and other methods that provide a positive distraction has been shown to promote a shorter stay, a reduction in pain response, and improved mood for the patients, staff, and anxious family members. PositiveCare™ luminaires are designed to configure into large-scale murals, diverting attention away from stressful situations and enhancing any waiting room, lobby, or MRI room.

Our PositiveCare™ collection incorporates high-resolution photography and designer graphics, including playful pediatric designs, to soothe anxiety. These thoughtfully curated works are designed in warm, cool, neutral, pastel, and primary color options and can be customized to any scale or color specification.

Our family includes 1x1, 2x2, 2x4 or 4x4 luminaires that overlap a grid without obvious doorframes, Skylite-like lay-ins, or decorative sconces.



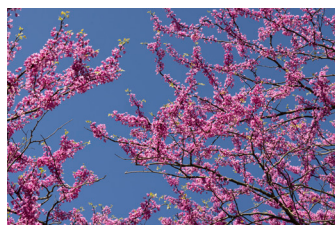




# POSITIVECARE™ PHOTOGRAPHY

Our extensive PositiveCare collection is available in the Image Gallery on our website. These high resolution graphics are specifically designed for large-format installations and UV protected to ensure long life. The images are photographed in layers and can be easily modified - add clouds in the background, crop in to a specific fish or leaves on a tree. Our team will work to provide the exact image you'd like to showcase in your space.

## SPRING TREES



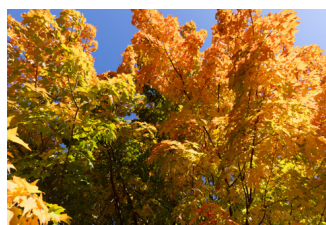
PC40001

## SUMMER TREES



PC50032

## FALL TREES



PC60008

## CLOUDS



PC20014

## OCEAN



PC10002

## LANDSCAPES



PC30009

## 1. LUMINAIRE



PCOG-44

Select the luminaire.

## 2. CONFIGURATION



PCOG-44-2

Select your desired configuration.

## 3. IMAGE



PCOG-44-2-PC50032

Select image from our portfolio.

## 4. PROOF



Send us your layout and we will prepare a proof for your final approval.



View the expansive  
PositiveCare™ gallery







# POSITIVECARE™ DESIGNER GRAPHICS

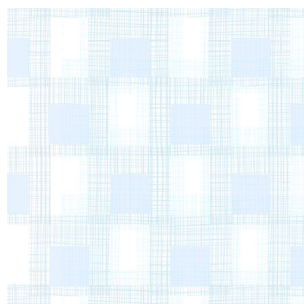
To further expand the offering, PositiveCare™ is also available in designer graphics with patterns including botanicals, geometrics, abstracts, and a delightful collection of pediatric images. These patterns can be scaled up or down and modified in color. Customization is even an option. All images in this portfolio can be found in the Image Gallery on our website.

## BOTANICALS



PC70002

## GEOMETRICS



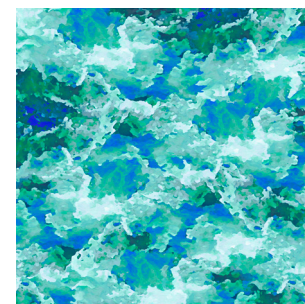
PC80006

## PEDIATRICS



PC90017

## ABSTRACTS

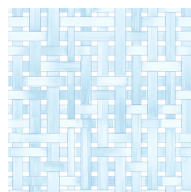


PC11007

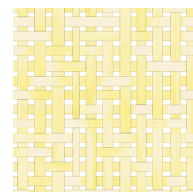


All patterns are offered in six colorways – two warm, two cool and a neutral. Pediatric patterns come in both primary and pastel colors to complement any decor or theme.

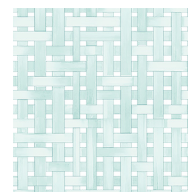
## BASKET



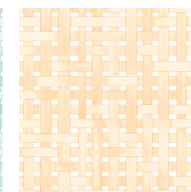
PC80001



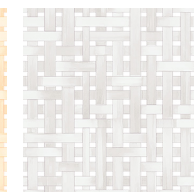
PC80002



PC80003



PC80004



PC80005



View the expansive  
PositiveCare™ gallery

# POSITIVECARE™ OVERLAPPING GRID SERIES

The Overlapping Grid family includes 2x2, 2x4 and 4x4 dimensions and designed to give the look of a luminous ceiling without the hassle. The lenses overlap the grid, eliminating the need for bulky doorframes that break up a mural. Ideal for waiting rooms, nurses' stations, chapels, pediatric areas, MRIs, and more.

- 2x2, 2x4 and 4x4 dimensions
- Static or Tunable White LED available
- Lenses overlap grid, providing large-scale mural in the ceiling or wall
- Thumb fasteners enable easy installation and maintenance
- All images are printed with high resolution camera, with images designed for large-scale installations without the pixelation
- All images can be modified – consult factory







# HOW TO SPECIFY



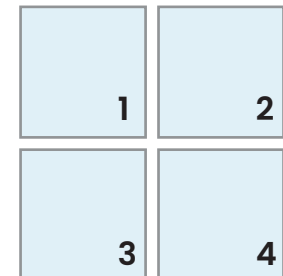
## 01. LUMINAIRE

The PositiveCare™ Overlapping Grid Series hides the T-bar, allowing a seamless image across multiple units. Available in 2x2, 2x4 and 4x4 sizes.



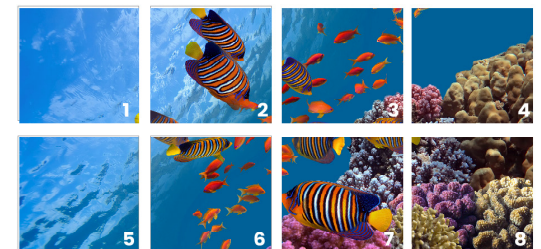
## 03. IMAGE SELECTION

Choose from our PositiveCare™ photography and designer graphics. View the full gallery on our website:



## 02. CONFIGURATION

Select from a range of different configurations.



## 04. REVIEW PROOF

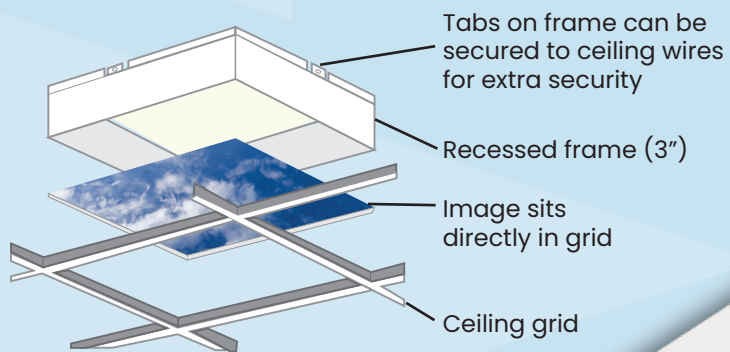
Send us your layout with sizes and your chosen image. We'll create a proof for your review and approval before production.



# POSITIVECARE™ SKYLITE SERIES

The SKYLite 1x1, 2x2, 2x4, and 4x4 features a built-in recessed frame to provide a skylight appearance in the ceiling. The graphic is backlit, and positions directly in the grid.

- 1x1, 2x2, 2x4, and 4x4 dimensions
- Static or Tunable White LED available
- Lenses lay into the grid, providing skylight appearance
- All images are printed with high resolution camera, with images designed for large-scale installations without the pixelation
- All images can be modified – consult factory













# POSITIVECARE™ FRAME SERIES

Triangular, Rectangle, and Oval organic shapes, all featuring choice of amber or white LED nightlights. These low-profile styles with tapered frames are 1.06" deep. The Frame's sleek modern form factors can accommodate both Photography and Designer Graphic images, or can be modified with custom graphics.

- Tapered diecast architectural frame provides ligature-resistance, choice of RAL finishes
- Low profile - 1' height at 1.06" deep
- Opal polycarbonate lens. Can integrate PositiveCare™ graphics
- Choice of Amber (585-595nm) or White LED nightlight for Fall Prevention





# CUSTOMIZED TO YOUR ENVIRONMENT'S NEEDS

Personalize your environment by submitting your artwork for printing. This is a great way to create a unique atmosphere that enhances the comfort of patients and visitors. To ensure the best quality, please ensure your images are 150 DPI at 100% of the original size. We look forward to helping you bring your vision to life!



**CCFB-CUS**

## Create a healing environment

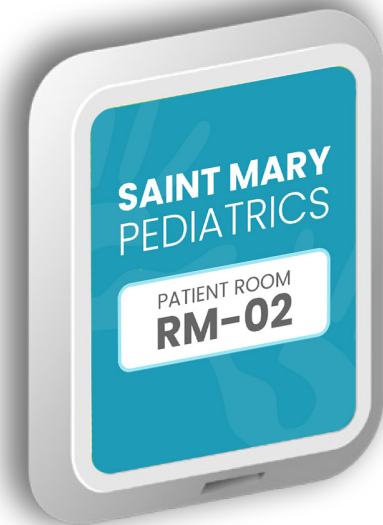
Incorporate images of local landmarks or scenes to provide patients with a sense of comfort and connection during their care by providing your own image.



**CCFB-CUS**

## Showcase your brand

Enhance the colors of your logo, creating vibrant signage that leaves a long-lasting impression in healthcare settings, commercial offices, schools, and anywhere you want backlit signage.



**CCFB-CUS**

## Enhance navigation

Use illuminated signage to make room numbers more visible and guide people to their destinations with ease. This approach creates a more intuitive experience for easier navigation.













## EXIT & EMERGENCY SERIES

Introducing our Emergency & Exit Series, designed to provide reliable illumination and ensure safety in critical healthcare environments. From hospitals and clinics to surgical centers and long-term care facilities, these exit and emergency signs meet strict compliance standards while offering durability and high visibility. With easy maintenance and dependable performance, they support safe egress for patients, staff, and visitors, even in the most demanding situations. Engineered for reliability and peace of mind, these solutions help healthcare facilities stay prepared when every second counts.



# COMPLETECARE™ EXIT & EMERGENCY

Available in a variety of styles, from semi-recessed, single-face, double-face and edgelit, New Star Lighting offers Exit & Emergency from architectural to complex environments. These meet the strictest life safety codes and include a Chicago and NYC-approved offering.



## MODEX™ SERIES

- Single face with red or green lettering options
- 20-Gauge formed stainless steel housing
- Recessed installation. Suitable for modular walls
- Optional tamper-resistant Torx® head fasteners for Behavioral Health applications



## COMPLETECARE™ EDGELIT SERIES

- Single face or double faced with red or green lettering options
- Extruded aluminum housing
- Black or white powder-coated finishes available
- Dual 120/277 voltage standard



## COMPLETECARE™ EDGELIT RECESSED SERIES

- Single face or double face with red or green lettering options
- Recessed installation
- Black or white powder-coated finishes available
- Dual 120/277 voltage standard



## COMPLETECARE™ CCEX SERIES

- Universal single/double face
- Field selectable Red or Green LED
- Recessed or surface installation
- Snap-out chevron directional indicators
- Dual 120/277 voltage



## NSELC SERIES – Chicago CCEA

- Single face or double faced with red or green lettering options
- Universal canopy for top, end or back mount
- UV-Stabilized edgelit acrylic
- Meets City of Chicago requirements



## NSELCR SERIES – Chicago CCEA

- Single face or double face options
- Drywall or drop-ceiling mount. Optional wall mount
- UV-Stabilized silk-screened acrylic
- Meets City of Chicago requirements



## NSELN SERIES – NYC Approved

- Single face or double face options
- Aluminum canopy for top, end or back mount
- UV-Stabilized edgelit acrylic
- Dual 120/277 voltage standard
- New York City compliant



## NSELNR SERIES – NYC Approved

- Single face or double faced options
- Drywall or drop-ceiling mount. Optional wall mount
- UV-Stabilized edgelit acrylic
- Dual 120/277 voltage standard
- New York City compliant





#### NSE SERIES

- Single face or double face with red or green lettering options
- Wall installation
- Snap-out chevron directional indicators
- Optional tamper-resistant Torx® head fasteners for Behavioral Health applications



#### NSEL SERIES

- Single face or double face with red or green lettering options
- Custom signage option
- Mounting canopy included for top, end or back mount installation
- Self-adhesive chevron appliques and guide template
- Dual 120/277 voltage standard



#### NSEM SERIES

- White or black housing options
- Suitable for wall or ceiling installations
- 1.5 Watt (3 LEDs x 0.50 watt) per head
- Dual 120/277 voltage standard
- Suitable for Damp Locations



#### NSCEU SERIES

- Single face or double faced with red or green lettering options
- Canopy for top or end mount. Universal KO on back plate for wall mount
- 5VA flame retardant, high-impact, thermoplastic
- Dual 120/277 voltage standard



#### NEXW SERIES

- Single face or double face with red or green lettering options
- Diecast brackets for wall, pre-installed conduit hub for conduit and pendant mount
- UV-Stabilized polycarbonate
- Dual 120/277 voltage standard
- Optional tamper-resistant Torx® head fasteners



#### NEXC SERIES

- Single face or double face with red or green lettering options
- Universal KO with gasket for back mount. Canopy for top or end
- UV-Stabilized polycarbonate
- Dual 120/277 voltage standard
- Optional tamper-resistant Torx® head fasteners



#### SCEM SERIES

- NEMA4X/NSF remote head
- Universal KO with gasket for back mount. Suitable for wall or ceiling mount
- White or black housing options
- UV-Stabilized polycarbonate
- Dual 120/277 voltage standard



#### SCERH SERIES

- NEMA4X/NSF remote head
- Suitable for wall or ceiling mount
- White or black housing options
- UV-Stabilized polycarbonate
- Dual 6/12 voltage standard





**Up we go!  
Children's  
Emergency  
Ahead**





1



# DURACARE™ BEHAVIORAL HEALTH

New Star Lighting's longevity in both correctional and healthcare gives us a unique knowledge of designing luminaires for behavioral health applications. While the applications can be broad, from outpatient treatment clinics to psychiatric units, our DuraCare™ collection responds to all levels of security. There are various types of facilities – from outpatient alcohol and drug treatment centers, to in-patient psychiatric units within general hospitals or private psychiatric hospitals. Therefore, the design and security requirements of these facilities vary greatly, but safety is always the top priority.

Our ligature-resistant offerings features modern forms for today's architecture. We address all areas, from low level security to the highest risk level applications with glare-free, comfortable lighting options. Options are available to assist with circadian entrainment with Tunable White and BIOS™.

The collection includes task lights, general ambient, steplights, downlights, sconces, vanity mirrors, and more. Look for our DuraCare symbol on our products for behavioral health applications. They're all designed to be ligature-resistant and suited for this complex environment.







# DURACARE™ BEHAVIORAL HEALTH

Guidelines for behavioral health assist in the planning, programming, and design process. The industry standard is the Facility Guidelines Institute (FGI), which is supported by the IES, the US Department of Veteran's Affairs for Military Facilities, the Canadian Healthcare Standards, or the respected New York Office of Mental Health. Legally, design still has to meet life safety codes and perform safety-risk assessments based on the type of facility being designed.

In behavioral health design, there has been a trend to transition from plain environments, to a richer environment with biophilic elements, natural daylight, and artwork integrated into the spaces.

Providing environmental flexibility with lighting provides a sense of control that contributes to healing in these spaces. At the same time, the luminaires need to be durable and easy to maintain. Depending on the safety risk level, luminaires can be standard healthcare or hospitality designs for applications like a nurses' station or a lobby, but need to be correctional grade for higher risk areas like unsupervised patient rooms or bathrooms.

New Star Lighting has unique expertise in both healthcare and correctional lighting, going back decades in these markets. We've blended durability with care, adding softer architectural style with our DuraCare product portfolio.



### HOUSING GAUGE

Housings should be 16-gauge or thicker for impact resistance and security, ensuring durability and compliance

### FASTENERS

Tamper-resistant to prevent unauthorized access, ensure secure installation and ligature resistance

### LED OPTIONS

Settings should offer energy-efficient, low-glare, flicker-free lighting to ensure comfort and safety. Amber nightlight options and adjustable white light provides functional illumination without disrupting sleep

### LENS THICKNESS

Lenses should be at least .125" inch thick, impact-resistant, and durable to ensure safety and prevent damage.



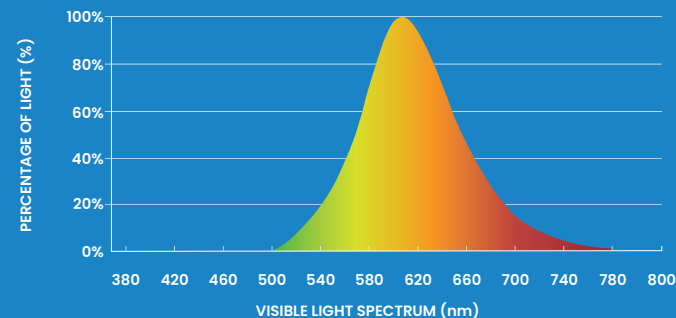
# THE CASE FOR AMBER NIGHT LIGHTS IN BEHAVIORAL HEALTH

Sleep quality is closely connected to mental and emotional health, and a lack of sleep has demonstrated links to depression, anxiety, bipolar disorder, and other conditions.

According to the National Institute of Health, "About three quarters of depressed patients suffer from insomnia symptoms, and hypersomnia is present in about 40% of young depressed adults and 10% of older patients. The symptoms cause huge distress, have a major impact on the quality of life, and are a strong risk factor for suicide."

In people with bipolar disorder, sleep patterns change considerably depending on their emotional state. People with schizophrenia are more likely to experience insomnia and circadian rhythm disorders.

The affects of sleep and our circadian rhythm has been well studied over the past decade; light wavelengths in the range of 460-525nm can suppress melatonin production, which can disrupt sleep. In residential and relaxation spaces, lighting can be used to promote healthy sleep patterns, especially with luminaires designed to mimic the natural pattern of daylight.



Amber nightlights can be used to allow low-level illumination for safe navigation throughout the facility at night, without disrupting the sleep-wake cycle. Ideally, luminaires that are dual-circuited that can shift from white during the day to amber at night offer flexibility and provide circadian support.

New Star Lighting offers a complete portfolio of luminaires – from downlights and vanity mirrors, to sconces and steplights – that provide functional white LED during the day and switch to softer amber LED at night. All designed to promote quality sleep, with the intention of creating a calm, soothing environment for residents to heal.





# DURACARE™ ASYMMETRIC SERIES

The DuraCare™ Asymmetric Multi-Function is a 3" aperture linear patient room series, sold in pairs, and designed for installation on either side of the patient bed. It seamlessly transitions between Ambient, Exam, Reading and Nightlight functions with superior optics.

- Ligature-resistant, with sealed doorframe using Torx® fasteners
- 3" Aperture with Symmetric/Asymmetric optics delivers uniform light without transition lines or pixelation
- Four functional modes: Ambient, Exam, Reading, Nightlight
- Amber Nightlight option is 585-595nm
- Controls and sensor-ready
- 3000-4000K White LED, Tunable White, and BIOS™ options for circadian support



# DURACARE™ LINEAR SLOT

The DuraCare™ 4" Linear Series is available in 2' - 8' lengths for recessed ceiling or wall applications. It features Symmetric and Asymmetric distribution options, making it ideal for corridors, patient rooms, nurses' stations, and lobbies.

- 4" Aperture for recessed ceiling or wall installations
- Symmetric and Asymmetric distributions
- Available in 2700K, 3000K, 3500K, 4000K and Tunable White
- Sealed for infection control with an IP65 and NSF2 listing for cleanability
- Up to 1200lm/ft.
- All exposed surfaces painted with antimicrobial finish





# DURACARE™ TASK LIGHTS

DuraCare task lights are compact, ideal for desk, bed, or grooming areas. They are constructed of diecast aluminum housings, polycarbonate lenses and concealed Torx® fasteners. With a simple tap, these task lights dim from 100% to 50% to off, giving the user control over their desired light levels.

- Task Illumination intended for Behavioral Health and Healthcare Applications
- Available in two contemporary shapes – Conical and Trapazoidal
- Durable diecast & polycarbonate construction, concealed Torx® head fasteners
- 0-10V Dimming to 1%
- White or Amber LED option (585nm – 595nm)
- Field-selectable white CCTs – 3000K, 3500K, 4000K
- New Star Promise Lifetime Warranty







# DURACARE™ VANITY MIRRORS

DuraCare Vanity Mirrors are made of eco-friendly copper-free mirror material, which is the most corrosion-resistant, scratch-free and durable material available. Copper-free mirrors are made to last, are better for the environment and will still stand the test of time.

- Low profile, semi-recessed rectangle and oval styles
- Durable copper-free polycarbonate mirror with scratch-resistant finish. Mirror secured to housing frame with Torx® fasteners
- White LEDs in 3000K, 3500K and 4000K (90 CRI), as well as red rendering (R9>50) for proper skin tone evaluation
- Amber nightlight standard (585nm – 595nm)
- Sealed for infection control with an IP65 and NSF2 listing for cleanability
- Antimicrobial RAL frame finishes available

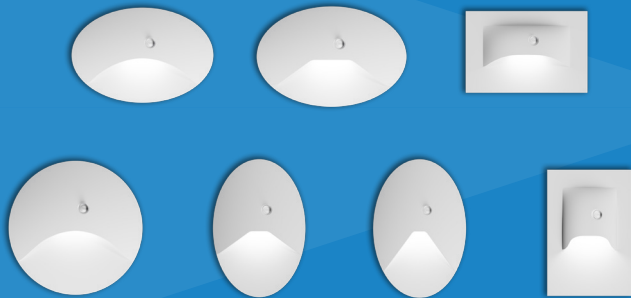




# DURACARE™ STEPLIGHTS

A collection of modern Round, Oval, and Rectangle shapes in vertical and horizontal configurations. These low-profile styles, feature tapered die-cast faceplates with polycarbonate lenses that are secured with a concealed Torx® fastener.

- Round, Oval and Rectangle shapes, semi-recessed for Behavioral Health installations
- Diecast housing, polycarbonate lens and concealed fastener
- Available in field-selectable White (2700-5000K) Amber(585-595nm), Red(620-630nm) or Blue(469-480nm) LED
- Selectable sensor with settings for Photo/Motion/Off
- Designed to install into a standard j-box (by others)
- New Star Promise Lifetime Warranty





# DURACARE™ FRAME SERIES

The Frame Series is only 1" deep, with a sleek modern profile. It's built for durability, with a heavier duty die casting housing frame featuring clean tapered edges that seals against the wall surface. The Frame is available with a white or amber nightlight to ensure safe navigation, and can incorporate custom signage for wayfinding.

- Tapered architectural frame with a concealed Torx® fasteners to backplate provides ligature-resistance choice of RAL finishes
- Low profile - 1" height at 1.06" deep
- Choice of Amber (585-595nm) or White LED nightlight for Fall Prevention
- Capable of integrating PositiveCare™ Graphics
- Designed to compliment new steplight options
- New Star Promise Lifetime Warranty

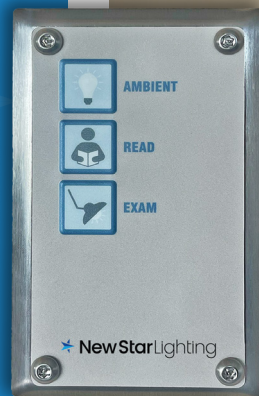




# DURACARE™ WALL PLATE SERIES

A more architectural approach, the DuraCare™ wall plates are available in stainless steel material with tapered corners and Torx® fasteners. With the push of a button, the patient or caretaker can control the light levels of multiple functions in the patient room.

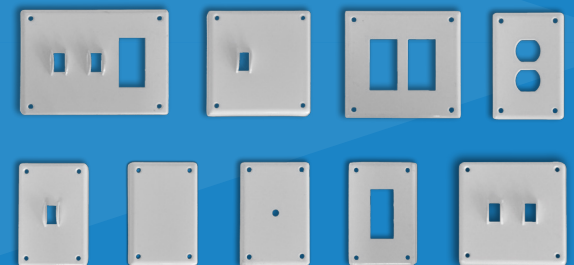
- Controls up to five separate lights/loads
- Quick on/off of any light (load)
- Provides easy access for clinicians
- Seamlessly integrates with any nurse call system
- Allows staff to dim the lights when used with New Star DuraCare™ Healthcare Luminaires
- Secured with tamper-resistant Torx® fasteners



# DURACARE™ SECURITY WALL PLATE SERIES

When detention-grade design is required, our DuraCare security wall plates are the right choice. We offer a wide variety of heavy-duty options for unsupervised settings.

- 10-Gauge cold rolled steel or stainless steel for maximum security
- One to three gang, duplex receptacle, GFI receptacle or standard switch options
- Baked white enamel or brushed finish
- Designed for poured concrete or steel and concrete block walls
- Secured with Torx® fasteners





# DURACARE™ BEHAVIORAL HEALTH

The DuraCare™ portfolio includes luminaires that are designed with security in mind. These luminaires feature ligature-resistant, heavy-duty housings, dual lensing, Z-bracket lens retention and other features that enable them to stand up to toughest behavioral health settings.



## DURACARE™ ASYMMETRIC MULTI-FUNCTION SERIES

- 4' and 6' lengths
- Ambient, Exam, Reading & Nightlight functions
- Asymmetric distribution for exam
- Dimmable to 1%
- Tunable White & BIOS
- IP65, NSF2 and IK10 Listed



## DURACARE™ LINEAR SLOT

- 2', 3', 4', 6' and 8' Lengths
- Up to 1200 lumens/ft.
- 3000-4000K
- 80 or 90 CRI options
- Tunable White
- IP65, NSF2, IK10 Listed



## DURACARE™ VANITY MIRROR SERIES

- Low profile, semi-recessed mirror in Oval or Rectangle
- Corrosion-resistant, copper-free provides clear imaging, high reflectance and better durability
- Amber or White LED highlight



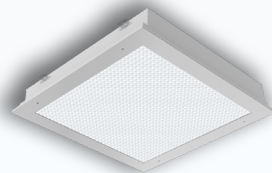
## DURACARE™ TASK SERIES

- Conical and Trapezoidal shapes
- White or Amber LED option
- 3000-4000K
- 0-10V Dimming to 1%
- Torx® head fasteners
- IP65, NSF, IK10 Listed



## DURACARE™ AURAMED CLASSIC SERIES ✓

- 1x4, 2x2, 2x4 Dimensions
- 14 – 18Ga. CRS or Stainless Steel housings
- 3000-5000K options
- Dimmable to 1%
- Tunable White
- CCEA, IP65, ISO3, Wet and IK10 listed



## DURACARE™ 37M SERIES ✓

- 1x1, 1x4, 2x2, 2x4 dimensions
- 12 – 18Ga. CRS or Stainless Steel housings
- 3500-5000K options
- Dimmable to 1%
- Tunable White
- IK10 Listed



U.S. Patent No. 8,277,091

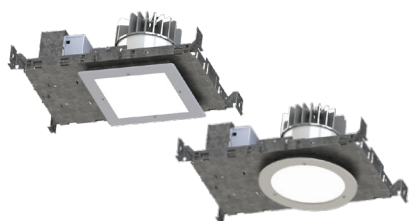
## DURACARE™ STARTILE MAX SERIES ✓

- 1x1, 1x4, 2x2, 2x4 dimensions
- 14-Gauge cold rolled steel housing with beveled edges
- 3000-5000K options
- Dimmable to 1%
- IK10 Listed



## AURAMED SERIES

- 1x2, 1x4, 2x2, 2x4 dimensions
- Multi-function or Ambient functions
- 3000-5000K options
- Dimmable to 1%
- Tunable White
- IK10 Listed



### DURACARE™ DOWNLIGHT SERIES

- 4" and 6" dimensions
- Round and square trim options
- 3000K, 3500K & 4000K options
- 80 or 90 CRI options
- IP65 and NSF2 rated



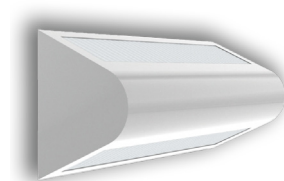
### 47R SERIES

- 1x2, 1x4, 2x2, 2x4 dimensions
- 14 - 18Ga. CRS or Stainless Steel housing
- 3500-5000K options
- Dimmable to 1%
- Inner lens up to .187", Outer lens up to .750"
- IK10 Listed



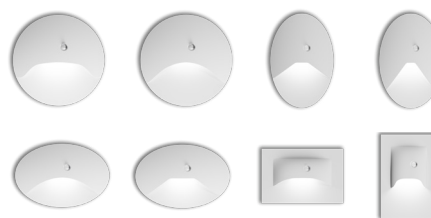
### DLM6 SERIES ✓

- 6" Aperture
- 16Ga. CRS housing
- White antimicrobial powder coat finish on all exposed surfaces
- 3000-5000K options
- Optional tamper-resistant Torx® head fasteners
- IK10 Listed



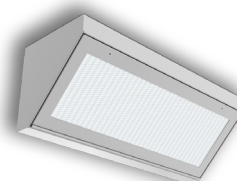
### RUD SERIES

- 1', 2' & 4' Lengths
- 14 - 18Ga. CRS or Stainless Steel housing
- 3500-5000K options
- Dimmable to 1%
- Inner lens up to .750", Outer lens up to .125"
- IK10 Listed



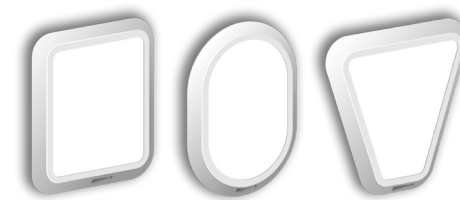
### STEPLIGHT SERIES

- Offered in oval, rectangle and round styles
- Each style offered in vertical and horizontal faceplates
- White 2700-5000K, amber, red and blue LED options
- Selectable sensor with settings for Photo/Motion/Off



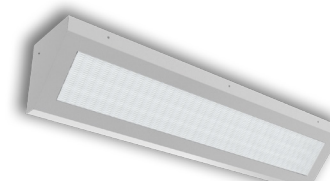
### DURACARE™ 55 SERIES

- 1', 2' and 4' Lengths
- 12 - 18Ga. CRS or Stainless Steel housings
- 3500-5000K options
- Dimmable to 1%
- LED nightlight option available
- Black neoprene gasket around door frame to prevent light leaks



### DURACARE™ FRAME SERIES

- Tapered diecast aluminum housing frame, and heavy-weight, heavy-gauge steel baseplate
- 1' height at 1.06" deep
- Field selectable CCT: 2700K-5000K
- Amber (585nm-595nm) or White LED highlight options

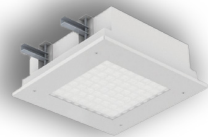


### DURACARE™ 55M SERIES

- 1', 2' and 4' Lengths
- 12 - 18Ga. CRS or Stainless Steel housings
- 3500-5000K options
- Corner clamshell housing
- LED nightlight option available
- Dimmable to 1%
- Tamper-resistant Torx® head fasteners

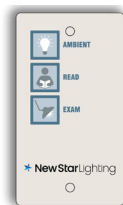


# DURACARE™ BEHAVIORAL HEALTH



## DURACARE™ 57M SERIES ✓

- 1x1 Dimension
- 12 – 16Ga. CRS or Stainless Steel housings
- 3500–5000K options
- Tunable White
- LED nightlight option available
- IK10 Listed



## DURACARE™ WALL PLATE SERIES

- Controls up to five separate lights/loads
- Quick on/off of any light (load)
- Seamlessly integrates with any nurse call system
- Allows staff to dim lights when used with DuraCare™ luminaires



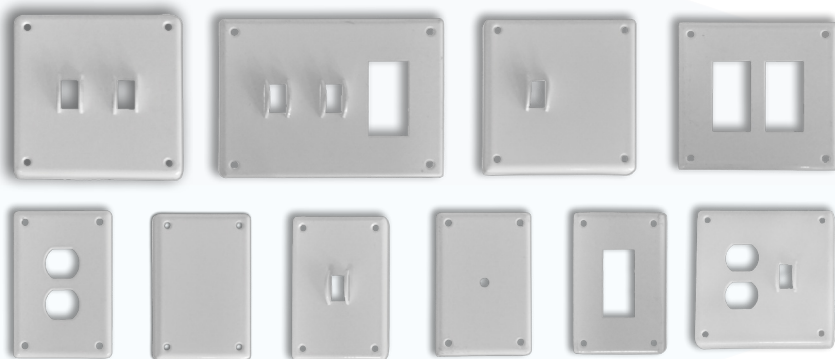
## DURACARE™ MODEX SERIES

- 2" Depth semi-recessed
- Red or Green lettering
- Clear polycarbonate lens for durability
- IP65 rating; NS2 Splash/Non-Food Zone listed
- Optional tamper-resistant Torx® head fasteners



## DURACARE™ DOOR SURROUND SERIES

- Surface mount installation;
- Field-customizable lengths of extrusion
- Activated by integrated sensor
- Dimmable Amber (585–595nm) at low luminance levels
- IK10 Listed – Designed to withstand impact by wheelchairs and other walking devices



## SECURITY WALL PLATE SERIES

- 10-Gauge cold rolled steel or stainless for maximum security
- PW-poured concrete
- SB-steel and concrete block walls
- Baked white enamel or brushed finish





# Saint Mary







# Pediatrics

## EXTERIORS

Exterior lighting plays a crucial role in safety, security, and functionality. Proper illumination ensure safe egress, well-lit patient drop off areas, and clear wayfinding for visitors. Lighting should support security cameras with minimal glare and eliminate dark areas to ensure safety.

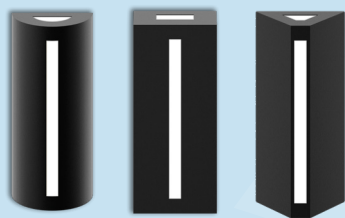
Additionally, exterior lighting should have the ability to withstand temperature or weather variations. Ideally, these luminaires feature Ingress Protection ratings to stand up against bugs and rain, offer emergency backup options, and offer architectural style to complement the design of the facility. Often, lighting is used to make a statement with signage or color, providing an attractive display in the local community.

New Star offers versatile building mounted options that are scalable to fit any facade, include IP ratings, and are durable with diecast housings and polycarbonate lenses. We even offer the New Star Promise – our lifetime guarantee as proof of our long-lasting construction features.



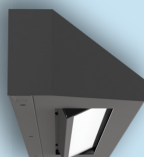
# EXTERIORS

New Star features attractive, yet tough and efficient exterior building mounted luminaires designed to hold up to any environment. With IP ratings and emergency backup options throughout the line, and field-adjustable optics on our over-the door Gateway Series, our features are ideally suited for public access applications. All covered by our New Star Promise - we stand by our products with this guarantee.



## SCULPTURE™ SERIES

- 1ft, 2ft, 3ft and 4ft lengths
- Faceplates offered in triangle, round, and square styles
- Low profile, provides uplight, downlight and edgelit illumination
- Additional faceplate design patterns available
- IP65 and IK10 Listed



U.S. Patent No. 10,845,041

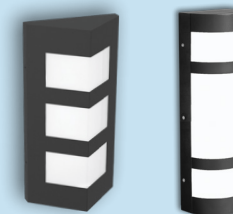
## GATEWAY SERIES

- 1ft, 2ft, 3ft, 4ft and 6ft lengths
- Housing available in aluminum, cold rolled steel or stainless steel
- Patented field-adjustable optic (-25°, -12.5°, 0°, 12.5°, 25°)
- Frosted UV-Stabilized polycarbonate lens inside aluminum frame
- IP65 Optical chamber and IK10 Listed



## GW SAFEGUARD SERIES

- 2.5" Dia. round or 12.5" square shape with three different frame styles: open, half cutoff and grid
- Surface installation, ADA options available
- Opal UV-stabilized polycarbonate lens for maximum diffusion
- IP66 and IK10 listed



## LAMPA SERIES

- 1ft, 2ft and 4ft lengths
- Die-formed, seam welded and ground smooth stainless steel, marine grade aluminum or cold rolled steel
- Opal UV-stabilized polycarbonate lens for maximum diffusion

The image shows the exterior of a modern building at night. The building has a stone-textured upper section and a smoother lower section. Two large, dark-framed rectangular windows are set into the stone wall above the entrance. The entrance itself is a large glass door flanked by two light-colored pillars. Three vertical, rectangular light fixtures are mounted on the walls: one on the left pillar, one on the right pillar, and one on the left wall above the entrance. The text "Saint Mary Pediatrics" is displayed in a bold, sans-serif font above the glass door. The interior of the building is visible through the glass door, showing a brightly lit space with yellow and purple lighting. The overall scene is illuminated by the building's lights and the ambient night light.

# Saint Mary Pediatrics



# TUNABLE WHITE

Tunable white lighting replicates natural light patterns and adjusts color temperatures, bringing a range of benefits to healthcare environments. It seamlessly adapts to your needs, enhancing productivity, focus, relaxation, and well-being by providing the perfect balance of color temperature and intensity. This versatile lighting allows customization to align with the natural rhythm of the day or the specific mood of any space. Easily shift from energizing cool white light for focus and alertness to warm, soothing light that fosters a calm, relaxed atmosphere.

**Benefits for patients:** Tunable white lighting can enhance the healing environment by simulating natural daylight, supporting patients' circadian rhythms, and encouraging restorative sleep. In the evening, softer, warmer lighting promotes relaxation and calmness, helping patients unwind and support their recovery. During the day, brighter, cooler light keeps patients alert, boosts their mood, and promotes overall well-being.







**Benefits for staff:** Healthcare professionals work in high-pressure environments where mental clarity, physical health, and emotional resilience are crucial. Tunable white lighting supports staff by providing ideal lighting conditions that boost alertness, reduce fatigue, and enhance focus, helping to minimize errors. With the ability to adjust color temperature and intensity, tunable white lighting adapts to the diverse needs of staff throughout the day. In rest areas such as breakrooms and lounges, warmer, calming light fosters relaxation during breaks. In more active spaces, like nurses' stations, brighter, cooler lighting improves concentration and accuracy. This ensures that staff have the right lighting to perform their tasks safely and efficiently.





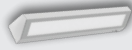







# DURACARE WITH TUNABLE WHITE

Hospitals can be stressful environments for both patients and visitors. Tunable white lighting can ease anxiety by creating a more inviting and soothing environment. Warmer tones help to soften the clinical atmosphere, creating spaces that feel less intimidating which can lead to lower stress levels for patients and their families.

## Behavioral Health

Product	
	<b>37M</b>
	<b>4" Linear (Ceiling &amp; Wall)</b>
	<b>DuraCare™ Multi-Function Linear</b> (ambient only)
	<b>DLM - 6" Downlights</b>
	<b>DCDL - 4" &amp; 6" Downlights</b>
	<b>Auramed Behavioral Health</b>

## Healthcare

Product	
	<b>StarMed Dos (Multi-Function)</b> (ambient only)
	<b>StarMed 1x1 (Ambient)</b>
	<b>StarMed Headwall</b> (ambient only)
	<b>Lumanique (all sizes)</b> (ambient only)
	<b>*New* - Asymmetric Multi-Function</b> (ambient only)
	<b>ComPro Series</b>
	<b>Primo</b>
	<b>M1 Series</b>
	<b>M2 Series</b> (ambient only)
	<b>M3/ M3R</b> (ambient only)



We spend 90% of our lives indoors, in spaces with artificial lighting that does not provide the circadian signals found in natural sunlight. As a result, our bodies and minds have become out of sync with natural day/night cycle. Research shows that this disconnect can have negative short-term and long-term health consequences over our lifetime. BIOS SkyBlue is the first circadian light source to include key blue-sky signals (490nm) our minds and bodies need to strengthen our circadian rhythms.

### BIOS SkyBlue™ Biological Benefits:

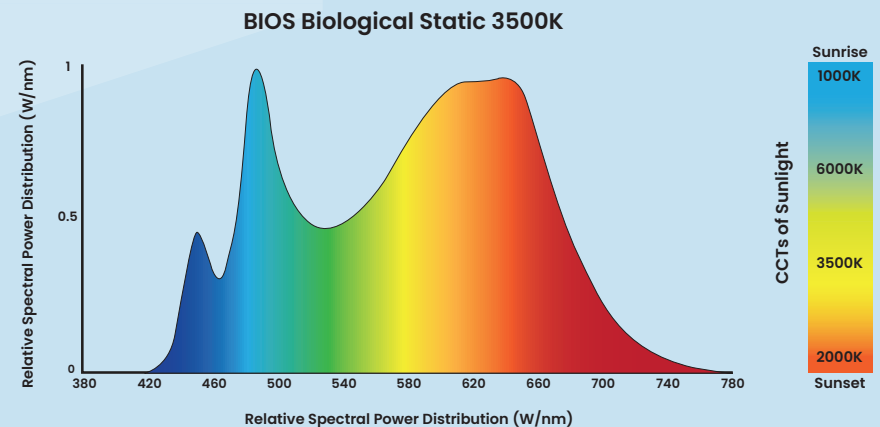
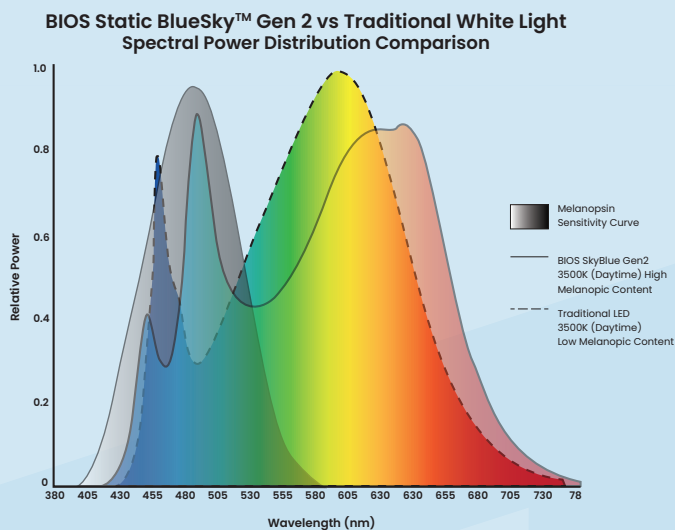
- Strengthens Your Circadian Rhythm
- Increases Alertness
- Enhances Productivity
- Boosts Mood
- Promotes a Better Night's Sleep

BIOS SkyBlue™ LED Circadian Lighting Solutions promote health and wellness using brilliant, high-quality architectural white light. BIOS SkyBlue is the first circadian light to align with the key blue-sky signals (490nm) our minds and bodies need to encourage daytime alertness and promote a better night's sleep.

With a peak energy emission at 490nm, BIOS SkyBlue offers the highest melanopic ratio at standard color temperatures (3000K, 3500K, 4000K) for comfortable and energy efficient illumination that supports healthy circadian rhythms, allowing you to work more productively, sleep more soundly, and live healthier.






### BIOS SkyBlue™ Key Features:

- Industry leading melanopic (m/p) ratios (3000K, 3500K, 4000K)
- Brilliant color quality for visual comfort (CRI 80+ and R9>90)
- Simple lighting controls, single-channel dimming, compatible with 0-10V and wireless controls, also compatible with 2-channel controls
- Contributes to WELL™ Circadian Lighting Feature


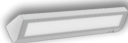









# DURACARE WITH

## Behavioral Health

Product	
	37M
	4" Linear (Ceiling & Wall)
	DuraCare™ Multi-Function Linear
	DLM - 6" Downlights
	DCDL - 4" & 6" Downlights

## Healthcare

Product	
	StarMed Dos (Multi-Function)
	StarMed Headwall
	AuraMed Multi-Function
	<b>*New*</b> - Asymmetric Multi-Function
	ComPro Series
	Primo
	M1 Series
	M2 Series
	M3/ M3R





# SUSTAINABILITY

New Star Lighting is committed to sustainability practices to reduce our environmental impact and be good stewards of our earth. We support our Chicago neighborhood and are proud that the majority of our employees live within a two-mile radius and walk or bike to work. As a lean manufacturer, we are dedicated to:

Reducing waste in material use in production. This includes recycling steel and aluminum, reclaiming water and powder from our powder coat paint line, recycling all plastics, wire, paper, glass, and minimizing packing materials. New Star recycles all cardboard brought into the facility from outside vendors and reuse it internally. We offer a ship back program with corner boards with a return label on outbound shipments so customers can ship them back to us for use on future shipments.

In-house nitrogen production for our laser equipment. We generate our own nitrogen gas using a dedicated “nitrogen producer” rather than relying on external deliveries of nitrogen gas, allowing us to produce the exact amount of nitrogen needed for our manufacturing equipment. This eliminates the need to purchase and transport nitrogen cylinders, reduces costs, and reduces our carbon footprint by eliminating transportation emissions.

Practicing Just in Time (JIT) manufacturing. New Star is a made-to-order manufacturer, building luminaires to designer’s specifications. Reducing waste and keeping lower inventory levels contribute to more sustainable manufacturing practices.

Implementing closed-loop designs that can be easily recycled. We are committed to designing for easy disassembly at a luminaire’s end-of-life.

**We’ll even help recycle for you with our ReNEW STAR program!**



# ***RENEW* STAR**

With today's LED lamps, when a luminaire hits L70, or 30% lumen depreciation, it's considered past its operating prime and should be replaced. An LED reaches its L70 lifespan after 5-6 years (or 50,000 hours) if used 10+ hours a day, depending on usage.

Prior to LED technology, when a lamp burned out (whether fluorescent, incandescent, metal halide, etc.) you'd simply recycle the lamp. This has created a lot of landfill waste. While you can technically replace an LED board, many users find it easier to simply throw away the fixtures and replace them with new ones.

At New Star Lighting, we want to help.

If you have purchased an LED luminaire from us in the past and it has reached L70, you can return it to New Star for a rebate on a new luminaire. New Star will recycle the luminaire for you. We will even pay for shipping costs to return the old luminaire to us!

To begin the process, please reach out to your New Star Regional Sales Manager.

**Let's work together to Reduce, Reuse and Recycle.**



# LISTING ICONS



## **ADA COMPLIANT**

Meets the accessibility standards set by the Americans with Disabilities Act to ensure usability for individuals with disabilities.



## **BUY AMERICA ACT**

Compliant with the Buy America Act, ensuring materials and products meet domestic manufacturing and sourcing standards.



## **BUILD AMERICA, BUY AMERICA ACT**

Mandates the use of U.S.-produced materials and products in federally funded infrastructure projects to support domestic manufacturing.



## **MADE IN AMERICA**

Manufactured and assembled within the United States, supporting domestic craftsmanship and production.



## **IP64**

Provides protection against dust and splashing water – 2.64 gallons per minute projected by multi-directional 0.25in nozzles for 10 minutes.



## **IP65**

Offers full protection against dust and can withstand 3.3 gallons of water projected by multi-directional 0.25in nozzles for 15 minutes.



## **IP66**

Offers full protection against dust and can withstand 26.4 gallons of water projected by multi-directional 0.50in nozzles for a minimum of 3 minutes.



## **IK10**

Indicates a high level of impact resistance, capable of withstanding shocks up to 20 joules.



## **CCEA**

The City of Chicago Environmental Air (CCEA) rating ensures that the luminaire is inherently airtight. Wiring and/ or branch circuit terminations are sealed off and gasketed from the plenum air space.



## **DURACARE**

Designed for behavioral health applications, prioritizing safety, durability, and patient well-being.



## **NSF2**

Certified by the National Sanitation Foundation for safe use in foodservice environments, ensuring compliance with hygiene and safety standards.



### NON-IC

Designed for use in ceilings where insulation is not in direct contact with the fixture, preventing heat buildup.



### DAMP LOCATION

Suitable for areas with occasional moisture or humidity, but not direct water exposure.



### WET LOCATION

Suitable for areas exposed to direct water contact, such as outdoor or damp environments.



### ETL CERTIFIED

Certified by Intertek Testing Laboratory, a global leader in testing, inspection, and certification for safety and quality standards.



### UL LISTED

Certified by UL to meet recognized standards for safety, performance, and reliability.



RENEW STAR

### RENEW STAR

Provides protection against dust and water splashes from any direction.



### BIOS

Supports circadian rhythms, enhancing well-being and improving productivity by delivering biologically optimized illumination.



New Star Lighting understands the need for reliability in demanding environments. We build our luminaires to last and stand behind them by offering our New Star Promise. We will repair or replace any High Abuse, Behavioral Health, or Vandal Resistant architectural fixture when installed according to our instructions for the life of the original installation if the fixture should fail due to physical abuse. In addition, all fixtures manufactured by New Star are warranted to be free from defects in workmanship and material for life, from the date of invoice. Exclusions to the warranty include damage from gunfire or chemical reactions.

**Look for the New Star Promise symbol on our cutsheets or website for more information.**





2225 W. Pershing Rd, Chicago, IL, 60609  
(773) 847-1400  
[www.newstarlighting.com](http://www.newstarlighting.com)

© 2025, New Star Lighting. All rights reserved. Unauthorized duplication or distribution is prohibited. [04162025]