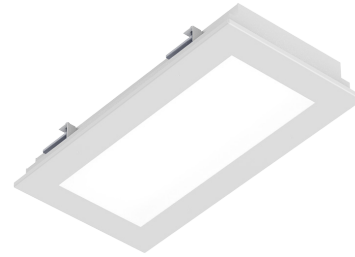


PROJECT: _____
 TYPE: _____
 PRODUCT: _____
 APPROVED BY: _____



37M Series

PRODUCT FEATURES

- Ligature-resistant features to support Behavioral Health applications
- Luminaire is designed for recessed drywall ceiling applications and is not appropriate for acoustical grid ceiling systems
- Die formed, seam welded, and ground smooth cold rolled steel or stainless steel housing
- Tamper-resistant Torx® fasteners with center pin reject
- Fixture is IK10 listed per IEC60068-2-75
- This product is Made in America and complies with the Buy American Act (BAA), and the Build America, Buy America Act (BABAA)
- The DuraCare™ 37M is covered by the New Star Promise

ORDERING INFORMATION

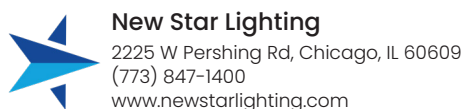
Example: 37M12-DC-F/C-L235-90C-1C-0/A-UN-DM1-WL



| 37M | | DC | / | | | | |
|---------------|--|----------------|--|---|--|--|--|
| Series | Size* 12 = 1 x 2 14 = 1 x 4 22 = 2 x 2 ✓ 24 = 2 x 4 | DC = DuraCare™ | Housing A = 12Ga. CRS Painted B = 14Ga. CRS Painted C = 16Ga. CRS Painted ✓ D = 18Ga. CRS Painted E = 14Ga. SS Brushed F = 16Ga. SS Brushed G = 18Ga. SS Brushed H = 14Ga. SS Painted J = 16Ga. SS Painted K = 18Ga. SS Painted | Frame A = 12Ga. CRS Painted B = 14Ga. CRS Painted C = 16Ga. CRS Painted ✓ E = 14Ga. SS Brushed F = 16Ga. SS Brushed H = 14Ga. SS Painted J = 16Ga. SS Painted | Lumen Output* 37M12-14: L2 = Low L3 = High 37M22-24: L2 = Low L4 = Standard L6 = Medium L8 = High | Color Temp. 35 = 3500K 40 = 4000K 50 = 5000K TW1 = Tunable White 2700K to 5000K* TW2 = Tunable White 27000 to 6500K* | CRI 80C = 80 CRI 90C = 90 CRI |
| | *Nominal Size. Dimensional Data on Page 2. | | | | *Subject to change. Performance Data on Page 3. | *Select Tunable White Driver in Driver Options | |

| | | / | | | | |
|---|---|--|---|--|--|--|
| Circuits 1C = 1 Circuit 2C = 2 Circuit | Outer Lens 0 = No Lens 1 = .187 Clear Poly. 2 = .250 Clear Poly. ✓ 3 = .375 Clear Poly. 5 = .187 Clear Temp. Glass 6 = .250 Clear Temp. Glass 7 = .375 Clear Temp. Glass* | Inner Lens A = .125 Prismatic Arcylic* B = .125 Prismatic Poly.* ✓ C = .156 Prismatic Poly.* D = .187 Prismatic Poly.* F = .156 Prismatic Acrylic G = .140 DR Acrylic** H = .125 White Frost Poly. LC3 = .125 White Frosted Poly. | Voltage 12 = 120V 27 = 277V 34 = 347V UN = Universal (120V-277V) | Driver DM = 0-10V dimming with 10-100% range DM1 = 0-10V dimming with 1-100% range SD2 = Step Dim. Driver (50-100%)* SD3 = Step Dim. Driver (25-50-100%)* | Options FZ1 = Fuse (120V) FZ2 = Fuse (277V) EL1 = Emerg. Bat. LED Low (1100-1250 lm)* EL2 = Emerg. Bat. LED High (1900-2000 lm)** LN = LED Night Light*** AH = Allen Head Screws with Center Pin Reject WL = Wet Location (Use under covered ceiling) PF = Plaster Frame & Yoke | |
| | *Must use with 12Ga. or 14Ga. Frame | *Not recommended for BIOS. **N/A with WL option. | | Tunable White Driver**: DAU8 = 1-Channel Dali8 TWD = 2-Channel 0-10V | | *If stored, batteries should be fully recharged every six months and kept between 0°C-25°C to maintain optimal battery capacity. **N/A for 37M12. If stored, batteries should be fully recharged every six months and kept between 0°C-25°C to maintain optimal battery capacity. ***3500K Night Light with integrated switch allows light levels at 100%, 70%,40% and 10%. **** N/A with 277V. |
| | | | | * N/A with 277V. **Tunable White Driver requires choice of TW1 or TW2 in Color Temp column | | |

✓ Indicates the product configuration meets the published guidelines by the State of New York for behavioral health applications. Find out more by visiting the [New York State Office of Mental Health's website](#).



Specifications and dimensions are subject to change without notice. For additional options and dimensional details, please consult your New Star Lighting representative.

© 2026, New Star Lighting. All rights reserved. Unauthorized duplication or distribution is prohibited.

SPECIFICATIONS

HOUSING: Die formed, seam welded, and ground smooth cold rolled steel or stainless steel housing. Incorporates a removable reflector unitized with all electrical components for easy installation and maintenance.

FRAME: Die formed one-piece frame with tightly closed corners (material and gauge to match housing).

HINGE: 16-Gauge drop hinge with welded ends to prevent removal (material to match housing).

LENS: Outer and inner lens options secured with "Z" retainers with welded studs six inches apart for maximum strength.

LED: Available in three color temperatures 3500K, 4000K, and 5000K with maximum 3-step MacAdam variation allowance. Other color temperatures available, consult factory. 90 CRI standard.

ELECTRICAL: 0-10V dimming available with 10-100% range and 1-100% range. Must specify dimming under options.

TUNABLE WHITE DRIVER OPTIONS:

- DALI8** - DALI Type 8 (One DALI Address)
- TWD** - Two channel 0-10V dimming: one channel for brightness, one channel for CCT

FASTENERS: Tamper-resistant Torx® head fasteners with center pin reject. Finish to match doorframe.

FINISH: White antimicrobial polyester powder coat finish following multistage iron phosphate pre-treatment unless stainless steel brushed is specified.

GASKET: Black neoprene gasket around door frame to prevent light leaks.

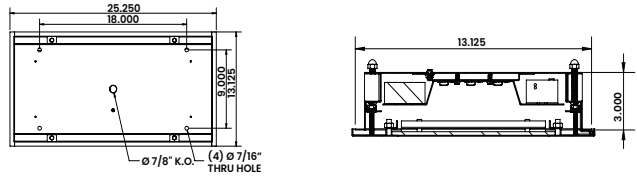
INSTALLATION: Easy Flange installation with adjustable 90° swing arm system. Hardware by others.

WARRANTY: Five (5) year warranty.

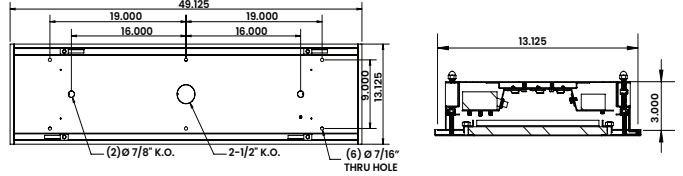
LABEL: Fixture is certified to UL standards by Intertek Testing Laboratory. Fixture is IK10 listed per IEC60068-2-75.

DIMENSIONAL DATA

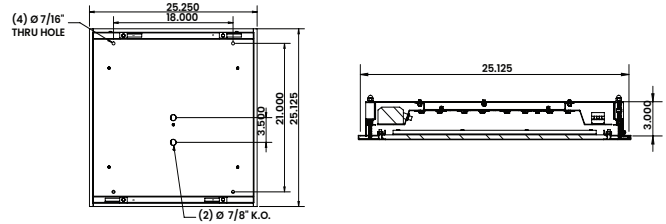
37M12



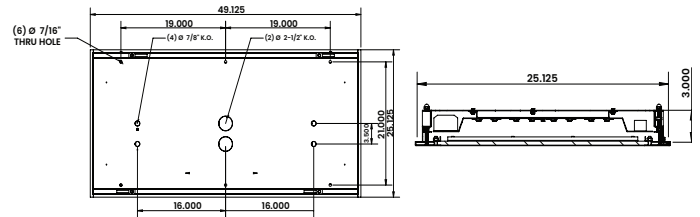
37M14



37M22



37M24



The DuraCare™ 37M LED Series is covered by our New Star Promise.

Our promise means we will repair or replace any of our High Abuse or Vandal-Resistant architectural luminaires when installed according to our instructions for the life of the original installation if the fixture should fail due to physical abuse*.

*Damage caused by gunfire and chemical reactions is not covered by the New Star Promise.

PERFORMANCE DATA

*Data is with 80 CRI chip. LEDs are frequently updated therefore values may change without notice.

| MODEL | OUTPUT | COLOR TEMP. | LUMENS DELIVERED | EFFICACY (lm/w) | INPUT POWER (W) |
|-------|---------------|-------------|------------------|-----------------|-----------------|
| 37M12 | L2 = Low | 4000K | 2750 | 110 | 25 |
| | L3 = High | 4000K | 4125 | 110 | 37.5 |
| 37M14 | L2 = Low | 4000K | 5500 | 110 | 50 |
| | L3 = High | 4000K | 8250 | 110 | 75 |
| 37M22 | L2 = Low | 4000K | 2750 | 110 | 25 |
| | L4 = Standard | 4000K | 5500 | 110 | 50 |
| | L6 = Medium | 4000K | 8250 | 110 | 75 |
| | L8 = High | 4000K | 11000 | 110 | 100 |
| 37M24 | L2 = Low | 4000K | 5500 | 110 | 50 |
| | L4 = Standard | 4000K | 11000 | 110 | 100 |
| | L6 = Medium | 4000K | 16500 | 110 | 150 |
| | L8 = High | 4000K | 22000 | 110 | 200 |



New Star Lighting

2225 W Pershing Rd, Chicago, IL 60609
 (773) 847-1400
www.newstarlighting.com

Specifications and dimensions are subject to change without notice. For additional options and dimensional details, please consult your New Star Lighting representative.

© 2026, New Star Lighting. All rights reserved. Unauthorized duplication or distribution is prohibited.