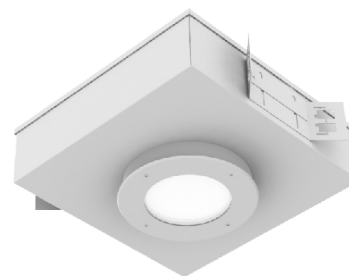


STARMED™ CLEANROOM DOWNLIGHT SERIES

PROJECT: _____
 TYPE: _____
 PRODUCT: _____
 APPROVED BY: _____

PRODUCT FEATURES

- Intended for Cleanrooms, Hi-Tech Manufacturing, Laboratory, Food Processing Facilities, and more
- Enclosed aluminum or cold rolled steel housing with extruded aluminum heat sink, 6" aperture
- Suitable for Wet Location installations, IP65 Per IEC 60598 rating, meets ISO 4/Class 10 Cleanrooms, and NSF2 Splash/Non-Food Zone and Food Zone, Optional MIL-STD-461G
- This product is Made in America and complies with the Buy American Act (BAA), and the Build America, Buy America Act (BABAA)



DLM Series

ORDERING INFORMATION

Example: DLM6-HA-L135-A/A-A-3-90C-UN-PH



DLM 6						
Series	Aperture	Housing	Lumen Output*	Color Temp.	Outer Lens	Inner Lens
	6 = 6 inch	HA = 16Ga. Aluminum Painted D = 18Ga. CRS Painted	L1 = 11W 82 CRI L2 = 29W 82 CRI L2C = 29W 90 CRI L3 = 13W 82 CRI L4 = 25W 82 CRI L5 = 37W 82 CRI L6 = 45W 82 CRI L6C = 34W 90 CRI L6A = 54W 82 CRI L7 = 52W 82 CR	35 = 3500K 40 = 4000K 50 = 5000K	A = .125 Clear Acrylic B = .125 Clear Poly. C = .187 Clear Poly. D = .250 Clear Poly. E = .250 Clear Poly. O = None	A = .125 Prismatic Acrylic B = .125 Prismatic Poly. C = .156 Prismatic Poly. D = .125 White Frosted Poly.

*Subject to change.
Performance Data on page 3.

3					PH-
Trim	Reflector	CRI	Voltage	Options	
A = .080 Aluminum Painted B = 18Ga. CRS Painted C = 18Ga. 304 Brushed* D = 18Ga. SS Painted*	3 = Low Gloss White	80C = 80 CRI 90C = 90 CRI	12 = 120V 27 = 277V UN = Universal (120V-277V)	PH = Phillips Fasteners FZ1 = Fuse (120V) FZ2 = Fuse (277V) EM = Emerg. Batt (remote)* MS = MIL-STD-461G	

*Additional fees may apply. Consult factory for details.

*Remote. Field installation required. If stored, batteries should be fully recharged every six months and kept between 0°C-25°C to maintain optimal battery capacity.

SPECIFICATIONS

CONSTRUCTION: 16-Gauge aluminum or optional 18-Gauge cold rolled steel sealed housing with an extruded aluminum heat sink designed for maximum thermal dissipation.

LENS: Features a choice of frosted or prismatic inner lens and clear outer lens in choice of acrylic or polycarbonate.

LED: Available in three color temperatures 3500K, 4000K, and 5000K with maximum 3-step MacAdam variation allowance. Other color temperatures available, consult factory. Minimum 50,000 hours with 70% lumen maintenance in a 25°C ambient temperature environment, compliant with IES LM-80 testing standards.

ELECTRICAL: 120-277Vac 50/60Hz, constant current driver (<20% THD, >0.9 PF). Standard 0-10V Dimming with 1-100% range.

FASTENERS: Stainless steel Phillips flat head fasteners with captive cage nuts. Finish to match trim.

FINISH: White antimicrobial polyester powder coat finish following multi-stage iron phosphate pretreatment on all exposed room-side painting surfaces, unless otherwise specified.

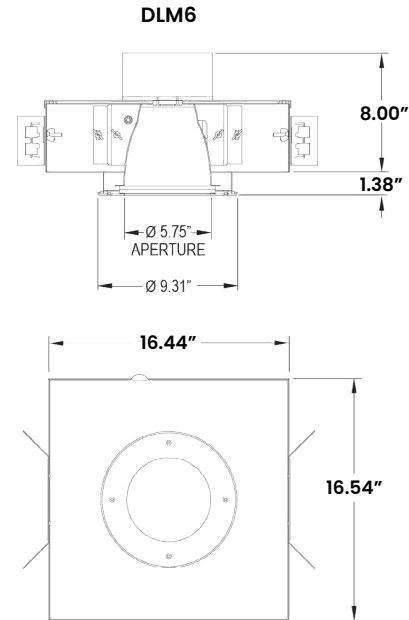
GASKET: Closed cell EPDM and closed cell silicone gaskets prevent air contaminations from entering the fixture.

INSTALLATION: Recessed installation.

WARRANTY: 5 Year Warranty.

LABEL: Fixture is certified to UL standards by Intertek Testing Laboratory for Non-IC and Wet Location installations (under covered ceiling). Certified IP65 per IEC 60598 and NSF2 Splash Zone/Non-Food and Food Zone listed. Meets ISO4 (FED-STD-209E/Class 10) Cleanrooms. Optional MIL-STD-461G. This product is Made in America and complies with the Buy American Act requirements.

DIMENSIONAL DATA



STARMED™ CLEANROOM DOWNLIGHT SERIES

PERFORMANCE DATA

*LEDs are frequently updated therefore values may change without notice.

DLM (82 CRI)	4000K	LC3	Clear Acrylic	Wattage
	L1	744	905	11
	L2	1332	1621	29
	L3	636	774	13
	L4	1284	1536	25
	L5	1934	2354	37
	L6	1980	2409	45
	L6A	2670	3249	54
	L7	3270	3979	52
DLM (82 CRI)	3000K	LC3	Clear Acrylic	Wattage
	L1	696	847	11
	L2	1266	1540	29
	L3	636	774	13
	L4	1284	1562	25
	L5	1936	2354	37
	L6	1896	2307	45
	L6A	2670	3249	54
	L7	3000	3650	52
DLM (90 CRI)	3000K	LC3	Clear Acrylic	Wattage
	L2	1200	1460	29
	L6C	1800	2190	34
	L7C	3000	3450	52



New Star Lighting

2225 W Pershing Rd, Chicago, IL 60609
(773) 847-1400
www.newstarlighting.com

Specifications and dimensions are subject to change without notice. For additional options and dimensional details, please consult your New Star Lighting representative.

© 2025, New Star Lighting. All rights reserved. Unauthorized duplication or distribution is prohibited.