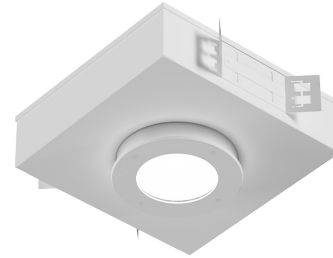


PROJECT: _____
 TYPE: _____
 PRODUCT: _____
 APPROVED BY: _____

PRODUCT FEATURES

- Intended for Cleanrooms, Hi-Tech Manufacturing, Laboratory, Food Processing Facilities, and more
- Enclosed aluminum or cold rolled steel housing with extruded aluminum heat sink, 6" aperture
- Suitable for Wet Location installations, IP65 Per IEC 60598 rating, meets ISO 4/Class 10 Cleanrooms, and NSF2 Splash/Non-Food Zone and Food Zone, Optional MIL-STD-461G
- This product is Made in America and complies with the Buy American Act (BAA), and the Build America, Buy America Act (BABAA)



DLM Series

ORDERING INFORMATION

Example: **DLM6-CR-HA-L435-90C-A/A-A-3-UN-PH**



DLM	6	CR				
Series	Aperture 6 = 6 inch	CR = Cleanroom	Housing HA = 16Ga. Alum. Painted D = 18Ga. CRS Painted	Lumen Output* L4 = 25W L5 = 37W L6 = 45W L7 = 52W	Color Temp. 35 = 3500K 40 = 4000K 50 = 5000K	CRI 80C = 80 CRI 90C = 90 CRI
				*Subject to change. Performance Data on page 3.		

			3		PH-
Outer Lens A = .125 Clear Acrylic B = .125 Clear Poly. C = .187 Clear Poly. D = .250 Clear Poly. E = .375 Clear Poly. O = None	Inner Lens A = .125 Prismatic Acrylic B = .125 Prismatic Poly. C = .156 Prismatic Poly. D = .125 White Frosted Poly.	Trim A = .080 Alum. Painted B = 18Ga. CRS Painted C = 18Ga. 304 Brushed* D = 18Ga. SS Painted* *Additional fees may apply. Consult factory for details.	Reflector 3 = Low Gloss White	Voltage 12 = 120V 27 = 277V UN = Universal (120V-277V)	Options PH = Phillips Fasteners FZ1 = Fuse (120V) FZ2 = Fuse (277V) EM = Emerg. Batt (remote)* MS = MIL-STD-461G *Remote. Field installation required. If stored, batteries should be fully recharged every six months and kept between 0°C-25°C to maintain optimal battery capacity.

SPECIFICATIONS

CONSTRUCTION: 16-Gauge aluminum or optional 18-Gauge cold rolled steel sealed housing with an extruded aluminum heat sink designed for maximum thermal dissipation.

LENS: Features a choice of frosted or prismatic inner lens and clear outer lens in choice of acrylic or polycarbonate.

LED: Available in three color temperatures 3500K, 4000K, and 5000K with maximum 3-step MacAdam variation allowance. Other color temperatures available, consult factory. Minimum 50,000 hours with 70% lumen maintenance in a 25°C ambient temperature environment, compliant with IES LM-80 testing standards.

ELECTRICAL: 120-277Vac 50/60Hz, constant current driver (<20% THD, >0.9 PF). Standard 0-10V Dimming with 1-100% range.

FASTENERS: Stainless steel Phillips flat head fasteners with captive cage nuts. Finish to match trim.

FINISH: White antimicrobial polyester powder coat finish following multi-stage iron phosphate pretreatment on all exposed room-side painting surfaces, unless otherwise specified.

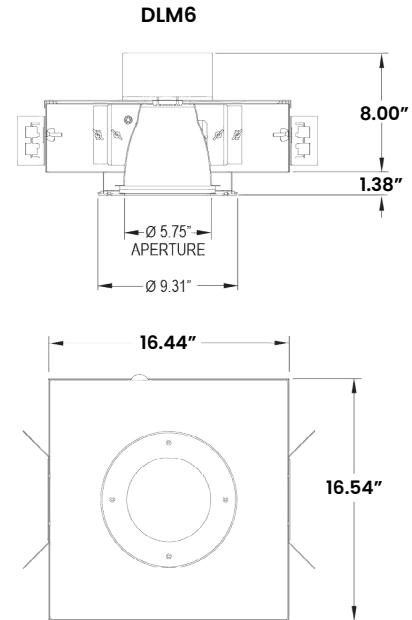
GASKET: Closed cell EPDM and closed cell silicone gaskets prevent air contaminations from entering the fixture.

INSTALLATION: Recessed installation.

WARRANTY: 5 Year Warranty.

LABEL: Fixture is certified to UL standards by Intertek Testing Laboratory for Non-IC and Wet Location installations (under covered ceiling). Certified IP65 per IEC 60598 and NSF2 Splash Zone/Non-Food and Food Zone listed. Meets ISO4 (FED-STD-209E/Class 10) Cleanrooms. Optional MIL-STD-461G. This product is Made in America and complies with the Buy American Act (BAA) requirements.

DIMENSIONAL DATA



PERFORMANCE DATA

*LEDs are frequently updated therefore values may change without notice.

Model	Output	lum	lm/w	Wattage
DLM6 (90 CRI)	L4	1625	65	25
	L5	2220	60	37
	L6	2610	58	45
	L7	2860	55	52