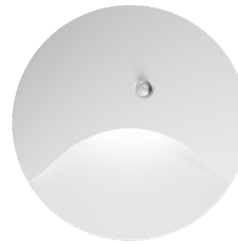


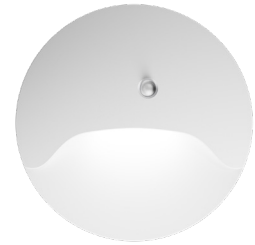
PROJECT: _____
 TYPE: _____
 PRODUCT: _____
 APPROVED BY: _____

PRODUCT FEATURES

- Field-adjustable LED CCT: Amber (585nm-595nm), White (2700K-5000K), Blue (469nm-480nm), or Red (620nm-630nm)
- 90-degree cut-off obstructs light trespass
- Built for durability; diecast faceplate with polycarbonate lens
- Selectable Sensor with settings for Photo/Motion/Off (can be turned on or off during installation)
- 0-10V Dim adjusted light level
- Installs to a standard J-Box (by others)
- IK10 listed per IEC60068, IP64 rated per IEC60598, NSF2 Splash/Non-Food Zone listed
- This product complies with the Buy American Act (BAA) when specifying "HG" under lumen output



CCSLC-V1



CCSLC-V2

ORDERING INFORMATION

Example: CCSLC-V1-SD-CCT-ALM-UN-TWB



*Must specify "HG" for compliance.

CCSLC			
Series	Faceplate Style V1 = Vertical V1 V2 = Vertical V2	Lumen Output SD = Standard Output (17 Lumens) HG = High Output (34 Lumens)* *N/A with CCT2. Must specify for BAA Compliance.	Color Temperature* CCT = White LED 2700K-5000K CCT2 = Amber/ Red /Blue *Housing comes in either white field selectable CCT options or color (amber, red or blue) field selectable options

UN		
Finish* blank = Standard White ALM = Almond (RAL 9001) BLK = Black BL = Blue (RAL 5009) LB = Light Blue (RAL 6034) LG = Light Gray (RAL 7035) LIC = Lilac (RAL 4009) PG = Pistachio Green CC = Custom RAL Color *Antimicrobial finishes are is standard. Color swatches on Page 3.	Voltage UN = Universal (120V-277V)	Accessories TWB = Adjustable thru-wall box with hangers (requires two steplights per thru-wall junction box)



New Star Lighting

2225 W Pershing Rd, Chicago, IL 60609
 (773) 847-1400
 www.newstarlighting.com

Specifications and dimensions are subject to change without notice. For additional options and dimensional details, please consult your New Star Lighting representative.

© 2026, New Star Lighting. All rights reserved. Unauthorized duplication or distribution is prohibited.

SPECIFICATIONS

CONSTRUCTION: ADA-compliant. Ligature-resistant, diecast aluminum faceplate and reflector.

LENS: UV-Stabilized, injection-molded polycarbonate.

LED: Available in field-selectable White LEDs (2700K - 5000k) at 80 CRI, or field-selectable colors: Amber (585-595nm), Red (620-630nm), Blue (469-480nm). Minimum 30,000h with 70% of lumen maintenance in 25°C ambient temperature environment, in compliance with IES LM-70 testing measurements.

ELECTRICAL: 120-277VAC, 50-60HZ, input wattage ~1W, power factor >0.9. L 0-10V Dimming.

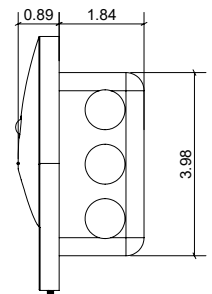
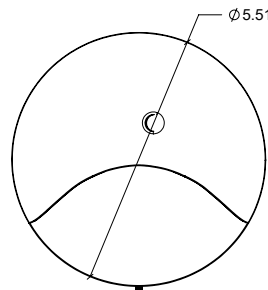
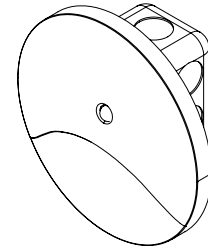
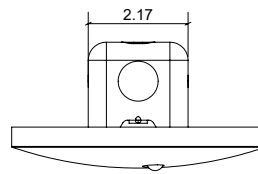
PHOTO CONTROL OPTION: Control circuit can be pre-set with four sensing modes: ON, Photo sensing (PS), PIR sensing, PIR + PS sensing. Delay time for PIR and PIR+PS modes is 1 minute (if no movement, then auto shut off after 1 minute). Environment light sensing: <80 lux LED ON & >300 lux LED OFF.

FINISH: Antimicrobial polyester powder coat finish following multi-stage iron phosphate pre-treatment. Black and other custom finishes optional.

INSTALLATION: Backplate installs to a single-gang j-box (by others). Thru-wall accessory housing also available for shared walls.

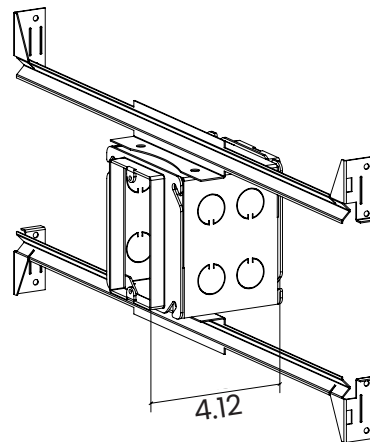
LABEL: IK10 listed per IEC60068, IP64 rated per IEC60598, NSF2 Splash/Non-Food Zone listed. This product complies with the Buy American Act (BAA) when specifying "HG" under lumen output

DIMENSIONAL DATA



ACCESSORIES (OPT.)

Thru-wall Option



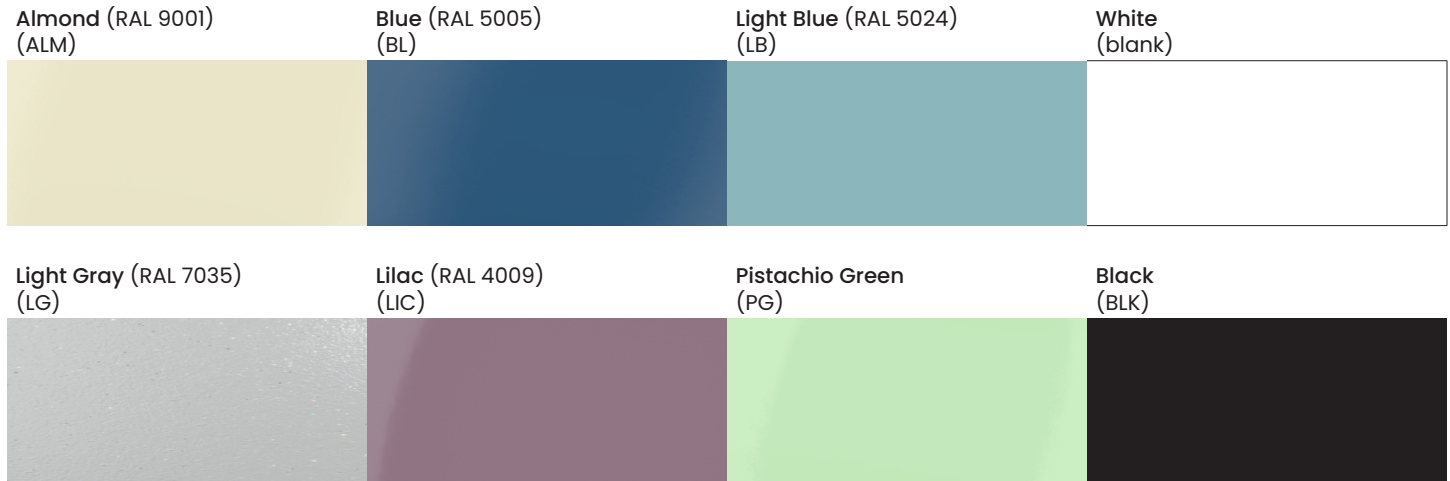
New Star Lighting

2225 W Pershing Rd, Chicago, IL 60609
(773) 847-1400
www.newstarlighting.com

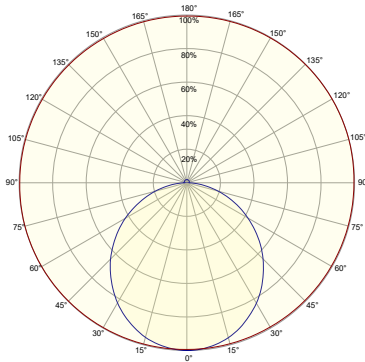
Specifications and dimensions are subject to change without notice. For additional options and dimensional details, please consult your New Star Lighting representative.

© 2026, New Star Lighting. All rights reserved. Unauthorized duplication or distribution is prohibited.

ANTIMICROBIAL FINISHES



PERFORMANCE DATA



Maximum intensity = 272.0 cd. Located at horizontal, vertical angles 15H 5V

- Peak plane: C165 - C345 (through max.intensity cd)
- Horizontal cone through vertical angle 5



New Star Lighting

2225 W Pershing Rd, Chicago, IL 60609
(773) 847-1400
www.newstarlighting.com

Specifications and dimensions are subject to change without notice. For additional options and dimensional details, please consult your New Star Lighting representative.

© 2026, New Star Lighting. All rights reserved. Unauthorized duplication or distribution is prohibited.