

WARRIOR WIDE FLUORESCENT SERIES



PROJECT: _____
 TYPE: _____
 PRODUCT: _____
 APPROVED BY: _____

PRODUCT FEATURES

- Intended for Minimum to Supermax Correctional Facilities, Detention Centers, Public Housing, Athletic Facilities, and more
- 2ft and 4ft Wide die-formed housing with inset doorframe secured by countersunk Torx® fasteners
- Lens secured by "Z" retainers with welded studs with center pin reject, spaced six inches apart for maximum strength
- This product is Made in America and complies with the Buy American Act, and the Build America, Buy America Act



WARW Fluorescent Series

ORDERING INFORMATION

Example: WARWF2-B-240-1-2/D-UN



WARWF					
Series	Size* 2 = 2ft 4 = 4ft *Nominal Size. Dimensional Data on Page 2	Housing B = 14Ga. CRS Painted C = 16Ga. CRS Painted D = 18Ga. CRS Painted E = 14Ga. SS Brushed F = 16Ga. SS Brushed G = 18Ga. SS Brushed H = 14Ga. SS Painted J = 16Ga. SS Painted K = 18Ga. SS Painted	# of Lamps WARWF2: 2 = 2 Lamp 3 = 3 Lamp 4 = 4 Lamp WARWF4: 2 = 2 Lamp 3 = 3 Lamp 4 = 4 Lamp	Lamp Type WARWF2: 17 = Linear 17W T8 14 = Linear 14W T5 24 = Linear 24W T5 HO 40 = 40 Twin 2Gx1l (2 lamp only) WARW4 32 = 32W T8 28 = 28W T5 54 = 54W T5 HO	# of Ballasts 1 = 1 Ballast 2 = 2 Ballast
Outer Lens 0 = No Lens 1 = .187 Clear Poly. 2 = .250 Clear Poly. 3 = .375 Clear Poly. 4 = .500 Clear Poly. 5 = .187 Clear Temp Glass 6 = .250 Clear Temp. Glass 7 = .375 Clear Temp. Glass* *Must use with 14Ga.	Inner Lens A = .125 Prismatic Acrylic B = .125 Prismatic Poly. C = .156 Prismatic Poly. D = .187 Prismatic Poly. F = .156 Prismatic Acrylic G = .140 DR Acrylic* LC3 = .125 White Frosted Poly. *Not rated for Wet Locations.	Voltage 12 = 120V 27 = 277V 34 = 347V UN = Universal (120V-277V)	Options DB = Dimming Ballast (0-10V) * DM = Dimming Driver (0-10V) SDM = Step Dimming Module PR = Program Rapid Start FZ = Fuse * NL = Fluorescent Night Light * AH = Allenhead Screws with center pin reject TH = Torx Head screws (with center pin) TM = Tandem Mount WL = Wet Location UV = .005 UV Absorbing Overlay		

SPECIFICATIONS

HOUSING: Die-formed, seam welded and ground smooth wide housing style in cold rolled steel or stainless steel. Incorporates a removable reflector unitized with all electrical components for easy installation and maintenance.

DOORFRAME: Die-formed one-piece inset doorframe (material and gauge to match housing), secured to housing with countersunk Torx® fasteners with center pin reject.

HINGE: 16-Gauge full length continuous, staked piano hinge, with welded ends, to prevent removal (material to match housing).

LENS: Lens secured by 'Z' retainers with weld studs spaced six inches apart for maximum strength.

ELECTRICAL: 120-277VAC or 347VAC, 50/60HZ electrical input high power factor electronic, constant current driver (<20% THD, >0.90 PF). Optional 0-10V Dimming with 1-100% range and 0-10V Dimming with 10-100% range.

GASKET: Black neoprene gasket around door frame to prevent light leaks.

FASTENERS: Tamper-resistant Torx® head fasteners with center pin reject.

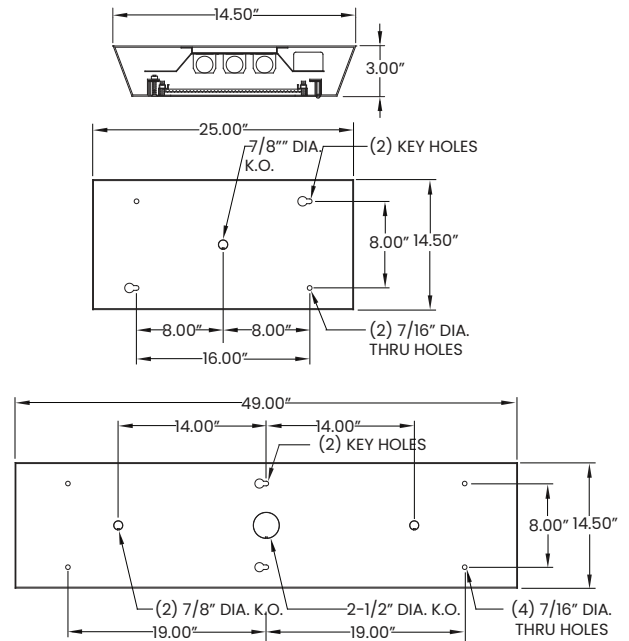
FINISH: White powder coat finish following multi-stage iron phosphate pre-treatment. Optional antimicrobial finish.

MOUNTING: Surface installation.

WARRANTY: New Star Promise.

LABEL: Fixture is certified to UL standards. Wet Location optional. This product is Made in America and complies with the Buy American Act, and the Build America, Buy America Act.

DIMENSIONAL DATA



The WARW Fluorescent Series is covered by our New Star Promise.

Our promise means we will repair or replace any of our High Abuse or Vandal-Resistant architectural luminaires when installed according to our instructions for the life of the original installation if the fixture should fail due to physical abuse*.

*Damage caused by gunfire and chemical reactions is not covered by the New Star Promise.