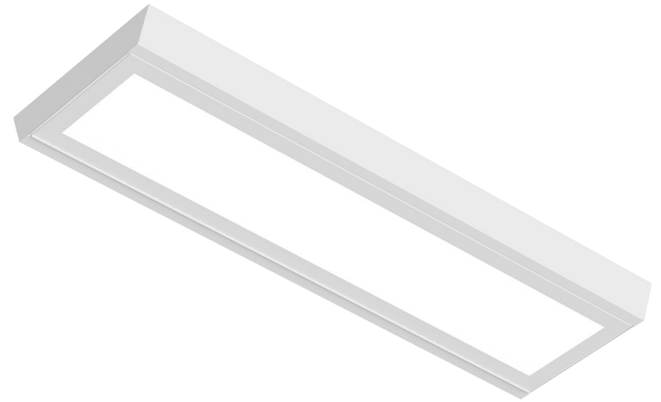


WARRIOR WIDE SERIES

PROJECT: _____
 TYPE: _____
 PRODUCT: _____
 APPROVED BY: _____



WARW Series

PRODUCT FEATURES

- Intended for Minimum to Supermax Correctional Facilities, Detention Centers, Public Housing, Athletic Facilities, and more
- 2ft and 4ft Wide die-formed housing with inset doorframe secured by countersunk Torx® fasteners
- Lens secured by "Z" retainers with welded studs with center pin reject, spaced six inches apart for maximum strength
- This product is Made in America and complies with the Buy American Act (BAA), and the Build America, Buy America Act (BABAA)
- The Warrior Series is covered by the New Star Promise

ORDERING INFORMATION

Example: WARW2-B-L240-90C-1C-2/D-UN



WARW						
Series	Size*	Housing	Lumen Output*	Color Temp.	CRI	Circuits
	2 = 2ft 4 = 4ft	B = 14Ga. CRS Painted C = 16Ga. CRS Painted D = 18Ga. CRS Painted E = 14Ga. SS Brushed F = 16Ga. SS Brushed G = 18Ga. SS Brushed H = 14Ga. SS Painted J = 16Ga. SS Painted	L2 = Standard L4 = High	35 = 3500K 40 = 4000K 50 = 5000K	80C = 80 CRI 90C = 90 CRI	1C = 1 Circuit 2C = 2 Circuits
	*Nominal Size. Dimensional Data on Page 2		*Subject to change. Performance Data on Page 2.			

/					
Outer Lens	Inner Lens	Voltage	Driver	Options	
0 = No Lens 1 = .187 Clear Poly. 2 = .250 Clear Poly. 3 = .375 Clear Poly. 4 = .500 Clear Poly. 5 = .187 Clear Temp Glass 6 = .250 Clear Temp. Glass 7 = .375 Clear Temp. Glass*	A = .125 Prismatic Acrylic B = .125 Prismatic Poly. C = .156 Prismatic Poly. D = .187 Prismatic Poly. F = .156 Prismatic Acrylic G = .140 DR Acrylic* LC3 = .125 White Frosted Poly.	12 = 120V 27 = 277V 34 = 347V UN = Universal (120V-277V)	DM = 0-10V dimming with 10-100% range DM1 = 0-10V dimming with 1-100% range	FZ = Fuse (120V) FZ1 = Fuse (277V) LN = LED Night Light* EL1 = Emerg. Bat. LED Low (10W)** EL2 = Emerg. Bat. LED High (20W)** AH = Allenhead Screws with Center Pin Reject AM = Antimicrobial finish on exposed surfaces WL = Wet Location	
*Must use with 14Ga.	*Not rated for Wet Locations.			*3500K non-dimming Night Light with integrated switch allows light levels at 100%, 70%, 40% and 10%. **Consult factory for the CA Title 24 options. If stored, batteries should be fully recharged every six months and kept between 0°C-25°C to maintain optimal battery capacity.	

SPECIFICATIONS

HOUSING: Die-formed, seam welded and ground smooth wide housing style in cold rolled steel or stainless steel. Incorporates a removable reflector unitized with all electrical components for easy installation and maintenance.

DOORFRAME: Die-formed one-piece inset doorframe (material and gauge to match housing), secured to housing with countersunk Torx® fasteners with center pin reject.

HINGE: 16-Gauge full length continuous, staked piano hinge, with welded ends, to prevent removal (material to match housing).

LENS: Lens secured by 'Z' retainers with weld studs spaced six inches apart for maximum strength.

LED: Available in three color temperatures 3500K, 4000K, and 5000K with maximum 3-step MacAdam variation allowance. Other color temperatures available, consult factory. Minimum 50,000 hours with 70% lumen maintenance in a 25°C ambient temperature, compliant with IES LM-80 testing standards.

ELECTRICAL: 120-277VAC or 347VAC, 50/60HZ electrical input high power factor electronic, constant current driver (<20% THD, >0.90 PF).

GASKET: Black neoprene gasket around door frame to prevent light leaks.

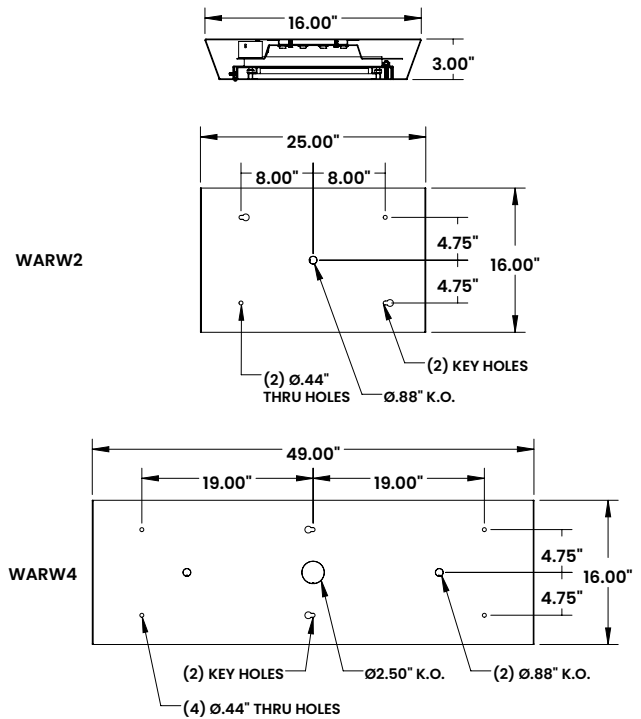
FASTENERS: Tamper-resistant Torx® head fasteners with center pin reject.

FINISH: White polyester powder coat finish following multi-stage iron phosphate pre-treatment. Optional antimicrobial finish.

MOUNTING: Surface installation.

WARRANTY: New Star Promise.

LABEL: Fixture is certified to UL standards. Wet Location optional. This product is Made in America and complies with the Buy American Act (BAA), and the Build America, Buy America Act (BABAA).



The WARW Series is covered by our New Star Promise.

Our promise means we will repair or replace any of our High Abuse or Vandal-Resistant architectural luminaires when installed according to our instructions for the life of the original installation if the fixture should fail due to physical abuse*.

*Damage caused by gunfire and chemical reactions is not covered by the New Star Promise.

DIMENSIONAL DATA



New Star Lighting

2225 W Pershing Rd, Chicago, IL 60609
(773) 847-1400
www.newstarlighting.com

Specifications and dimensions are subject to change without notice. For additional options and dimensional details, please consult your New Star Lighting representative.

© 2025, New Star Lighting. All rights reserved. Unauthorized duplication or distribution is prohibited.

PERFORMANCE DATA*

*Data is with 80 CRI chip.

MODEL	OUTPUT	COLOR TEMP.	LUMENS DELIVERED	EFFICACY (lm/w)	INPUT POWER (W)
WARW2	L2 = Standard	4000K	2875	115	25
	L4 = High	4000K	5750	115	50
WARW4	L2 = Standard	4000K	5750	115	50
	L4 = High	4000K	11500	115	100



New Star Lighting

2225 W Pershing Rd, Chicago, IL 60609
(773) 847-1400
www.newstarlighting.com

Specifications and dimensions are subject to change without notice. For additional options and dimensional details, please consult your New Star Lighting representative.

© 2025, New Star Lighting. All rights reserved. Unauthorized duplication or distribution is prohibited.