

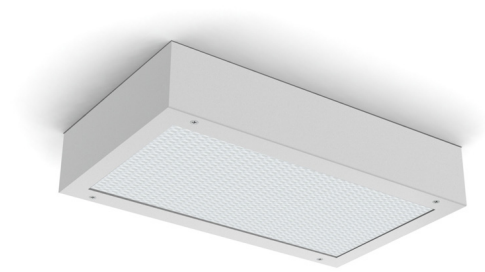
UMW FLUORESCENT SERIES



PROJECT: _____
 TYPE: _____
 PRODUCT: _____
 APPROVED BY: _____

PRODUCT FEATURES

- Intended for Maximum to Supermax Correctional Facilities, Detention Centers, Public Housing Complexes, Athletic Facilities, and more
- 2ft and 4ft surface clamshell in wide housing design with contraband drop slot between ceiling and back of luminaire
- Inner and outer lens secured by "Z" bracket retention system with 6" stud spacing for maximum strength
- This product is Made in America and complies with the Buy American Act, and the Build America, Buy America Act



UMW Fluorescent Series

ORDERING INFORMATION

Example: **UMWF4-C-240-1-1C-4/E-UN**



| UM | WF | | | | | |
|---|-------------------|--|---|---|---|--|
| Series | Style W = Wide | Size* 2 = 2ft 4 = 4ft *Nominal Size. Dimensional Data on Page 2 | Housing A = 12Ga. CRS Painted B = 14Ga. CRS Painted C = 16Ga. CRS Painted D = 18Ga. CRS Painted E = 14Ga. SS Brushed F = 16Ga. SS Brushed G = 18Ga. SS Brushed H = 14Ga. SS Painted J = 16Ga. SS Painted | # of Lamps 1 = 1 Lamp 2 = 2 Lamp 3 = 3 Lamp *Subject to change. Performance Data on Page 3. | Lamp Type UMWF2: 17 = Linear 17W T8 14 = Linear 14W T5 24 = Linear 24W T5 HO 40 = 40 Twin 2Gx11 UMWF4: 32 = 32W T8 28 = 28W T5 54 = 54W T5 HO | # Ballasts/Drivers 1 = Ballast 2 = Ballast |
| Outer Lens 0 = No Lens 1 = .187 Clear Poly. 2 = .250 Clear Poly. 3 = .375 Clear Poly. 4 = .500 Clear Poly. 5 = .187 Clear Temp Glass 6 = .250 Clear Temp. Glass 7 = .375 Clear Temp. Glass* 8 = .500 Clear Temp. Glass* 9 = .750 Clear Temp. Glass* *Must use with 12Ga. or 14Ga. | | Inner Lens A = .125 Prismatic Acrylic B = .125 Prismatic Poly. C = .156 Prismatic Poly. D = .187 Prismatic Poly. F = .156 Prismatic Acrylic G = .140 DR Acrylic* LC3 = .125 White Frosted Poly. *Not rated for Wet Locations. | | Voltage 12 = 120V 27 = 277V 34 = 347V UN = Universal (120V-277V) | Options DB = Ballast: Dimming (0-10V) * E1 = Emerg.Ballast (450 Lumens) *** E2 = Emerg.Ballast (1350 Lumens) *** PR = Program. Rapid Start Ballast AH = Allenhead Screws with center pin reject NL = Fluorescent Night Light * FZ = Fuse Holder * UV = .005 UV Absorbing Overlay | |

SPECIFICATIONS

HOUSING: Die-formed, seam welded, and ground smooth surface mount clamshell design in cold rolled steel or stainless steel. Incorporates a removable reflector unitized with all electrical components for easy installation and maintenance.

BACKPLATE: Die-formed with contraband drop slot and embossed mounting holes (material and gauge to match housing). Security caulking between ceiling and fixture is not required with this backplate design.

HINGE: 16-Gauge full length continuous staked piano hinge with welded ends to prevent removal (material to match housing).

LENS/LENS RETAINER: Outer and inner lens options secured with "Z" retainers with welded studs spaced six inches apart for maximum strength.

ELECTRICAL: 120-277VAC or 347VAC, 50/60HZ electrical input high power factor electronic, constant current driver (<20% THD, >0.95 PF). Optional 0-10V Dimming with 1-100% range or 10-100% range.

GASKET: Black neoprene gasket around door frame to prevent light leaks.

FASTENERS: Tamper-resistant Torx® head fasteners with center pin reject.

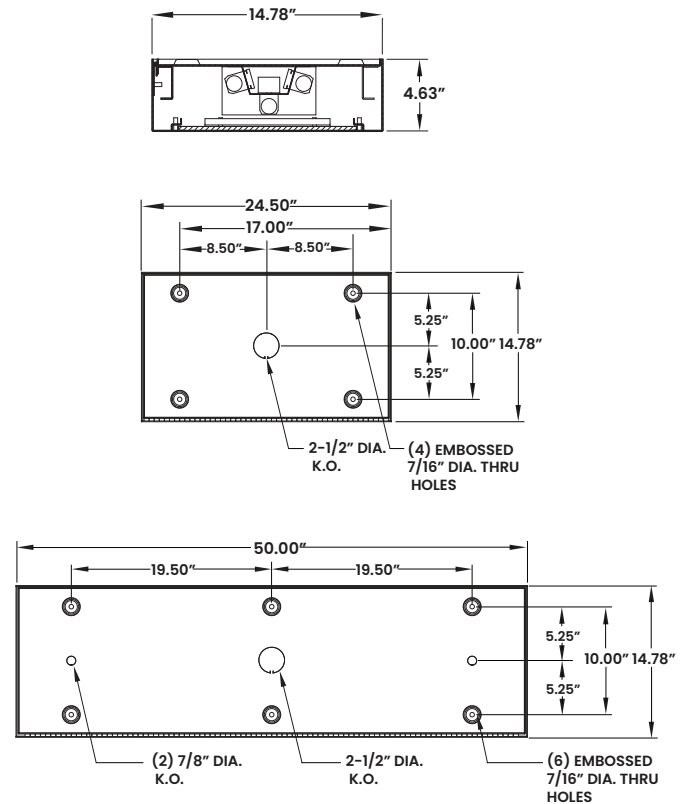
FINISH: White powder coat finish following a multistage iron phosphate pre-treatment.

MOUNTING: Surface installation. Hardware by others.

WARRANTY: New Star Promise.

LABEL: Fixture is certified to UL standards for Wet Locations. This product is Made in America and complies with the Buy American Act (BAA).

DIMENSIONAL DATA



The UMW Fluorescent Series is covered by our New Star Promise.

Our promise means we will repair or replace any of our High Abuse or Vandal-Resistant architectural luminaires when installed according to our instructions for the life of the original installation if the fixture should fail due to physical abuse*.

*Damage caused by gunfire and chemical reactions is not covered by the New Star Promise.