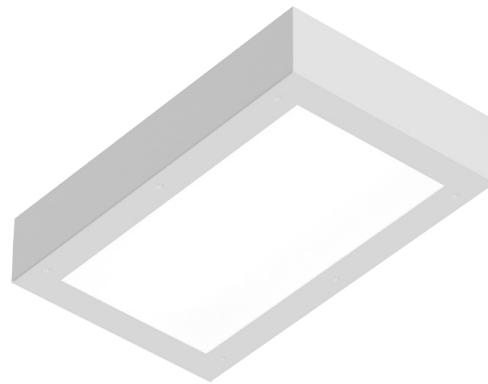


PROJECT: _____
 TYPE: _____
 PRODUCT: _____
 APPROVED BY: _____



UMW Series

PRODUCT FEATURES

- Intended for Maximum to Supermax Correctional Facilities, Detention Centers, Public Housing Complexes, Athletic Facilities, and more
- 2ft and 4ft surface clamshell in wide housing design with contraband drop slot between ceiling and back of luminaire
- Inner and outer lens secured by "Z" bracket retention system with 6" stud spacing for maximum strength
- This product is Made in America and complies with the Buy American Act (BAA), and the Build America, Buy America Act (BABAA)
- The UMW Series is covered by the New Star Promise.

ORDERING INFORMATION

Example: UMW4-C-L250-1C-4/E-90C-UN



UM	W					
Series	Style W = Wide	Size* 2 = 2ft 4 = 4ft *Nominal Size. Dimensional Data on Page 2	Housing A = 12Ga. CRS Painted B = 14Ga. CRS Painted C = 16Ga. CRS Painted D = 18Ga. CRS Painted E = 14Ga. SS Brushed F = 16Ga. SS Brushed G = 18Ga. SS Brushed H = 14Ga. SS Painted J = 16Ga. SS Painted	Lumen Output* L2 = Low L3 = High *Subject to change. Performance Data on Page 3.	Color Temp. 35 = 3500K 40 = 4000K 50 = 5000K	Circuits 1C = 1 Circuit 2C = 2 Circuits

/						
Outer Lens 0 = No Lens 1 = .187 Clear Poly. 2 = .250 Clear Poly. 3 = .375 Clear Poly. 4 = .500 Clear Poly. 5 = .187 Clear Temp Glass 6 = .250 Clear Temp. Glass 7 = .375 Clear Temp. Glass* 8 = .500 Clear Temp. Glass* 9 = .750 Clear Temp. Glass* *Must use with 12Ga. or 14Ga.	Inner Lens A = .125 Prismatic Acrylic B = .125 Prismatic Poly. C = .156 Prismatic Poly. D = .187 Prismatic Poly. F = .156 Prismatic Acrylic G = .140 DR Acrylic* LC3 = .125 White Frosted Poly. *Not rated for Wet Locations.	CRI 80C = 80 CRI 90C = 90 CRI	Voltage 12 = 120V 27 = 277V 34 = 347V UN = Universal (120V-277V)	Driver DM = 0-10V dimming with 10-100% range DMI = 0-10V dimming with 1-100% range	Options FZ = Fuse (120V) FZ1 = Fuse (277V) LN = LED Night Light* EL1 = Emerg. Bat. LED Low (1100-1250 lm)** EL2 = Emerg. Bat. LED High (1900-2000 lm)** AH = Allenhead Screws with Center Pin Reject WL = Wet Location (under covered ceiling)	
					*3500K. Non-dimming. Integrated switch allows light levels at 100%, 70%, 40% and 10% levels. **If stored, batteries should be fully recharged every six months and kept between 0°C-25°C to maintain optimal battery capacity	

SPECIFICATIONS

HOUSING: Die-formed, seam welded, and ground smooth surface mount clamshell design in cold rolled steel or stainless steel. Incorporates a removable reflector unitized with all electrical components for easy installation and maintenance.

BACKPLATE: Die-formed with contraband drop slot and embossed mounting holes (material and gauge to match housing). Security caulking between ceiling and fixture is not required with this backplate design.

HINGE: 16-Gauge full length continuous staked piano hinge with welded ends to prevent removal (material to match housing).

LENS/LENS RETAINER: Outer and inner lens options secured with "Z" retainers with welded studs spaced six inches apart for maximum strength.

LED: Available in three color temperatures 3500K, 4000K, and 5000K with maximum 3-step MacAdam variation allowance. Other color temperatures available, consult factory. Minimum 50,000 hours with 70% lumen maintenance in a 25°C ambient temperature environment, compliant with IES LM-80 testing standards.

ELECTRICAL: 120-277VAC or 347VAC, 50/60HZ electrical input high power factor electronic, constant current driver (<20% THD, >0.95 PF).

GASKET: Black neoprene gasket around door frame to prevent light leaks.

FASTENERS: Tamper-resistant Torx® head fasteners with center pin reject.

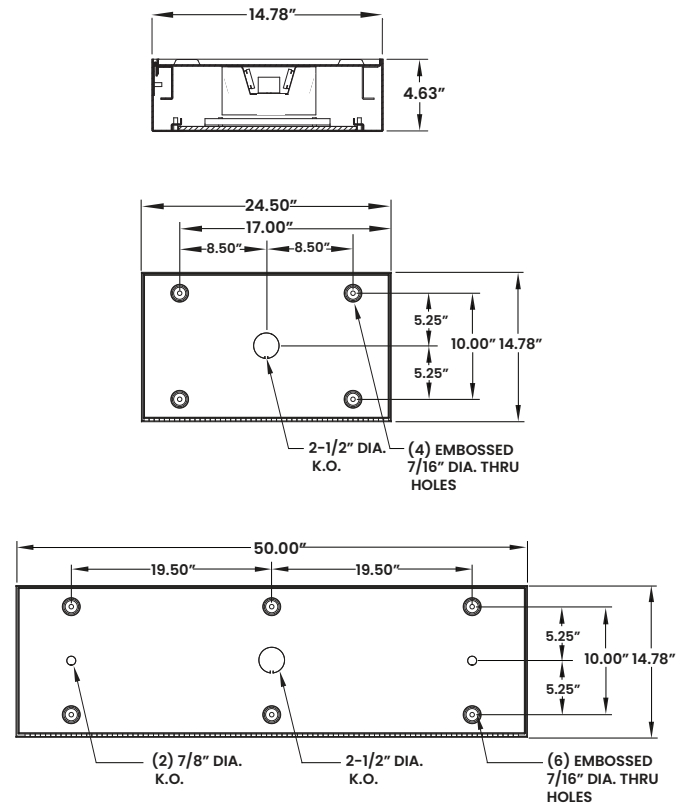
FINISH: White polyester powder coat finish following a multistage iron phosphate pre-treatment.

MOUNTING: Surface installation. Hardware by others.

WARRANTY: New Star Promise.

LABEL: Fixture is certified to UL standards for Wet Locations. This product is Made in America and complies with the Buy American Act (BAA), and the Build America, Buy America Act (BABAA).

DIMENSIONAL DATA



The UMW Series is covered by our New Star Promise.

Our promise means we will repair or replace any of our High Abuse or Vandal-Resistant architectural luminaires when installed according to our instructions for the life of the original installation if the fixture should fail due to physical abuse*.

*Damage caused by gunfire and chemical reactions is not covered by the New Star Promise.

PERFORMANCE DATA*

MODEL	OUTPUT	COLOR TEMP.	LUMENS DELIVERED	EFFICACY (lm/W)	INPUT POWER (W)
UMW2	L2 = Low	4000K	2750	110	25
	L3 = High	4000K	4125	110	37.5
UMW4	L2 = Low	4000K	5500	110	50
	L3 = High	4000K	8250	110	75



New Star Lighting

2225 W Pershing Rd, Chicago, IL 60609
(773) 847-1400
www.newstarlighting.com

Specifications and dimensions are subject to change without notice. For additional options and dimensional details, please consult your New Star Lighting representative.

© 2025, New Star Lighting. All rights reserved. Unauthorized duplication or distribution is prohibited.