

STARTRANS STAIRWELL SERIES



PROJECT: _____
 TYPE: _____
 PRODUCT: _____
 APPROVED BY: _____



STWL Series

PRODUCT FEATURES

- Intended for Corridors, Hallways, Lobbies, and more
- Surface mount linear fixture available in 2ft and 4ft
- Cold rolled steel low-profile housing
- Frosted polycarbonate lens for even light distribution
- Integral sensor option available
- The STWL Series is covered by the New Star Promise

ORDERING INFORMATION

Example: STWL2-T-L2L35-80C-40W-UN



STWL		T	CCT		80C
Series	Nominal Size 2 = 2ft 4 = 4ft *Nominal size. Dimensional Data on Page 2.	Style	Lumen Output* L2L = Low** L2 = Standard *Subject to change. Performance Data on Page 3. **L2L for STWL4 only.	Field-Selectable CCT 3500K - 5000K	CRI 80C = 80 CRI
WS					
Wattage Selectable 40W - 50W - 56W	Voltage 34 = 347V UN = Universal (120V-277V)	Options EL1 = Emergency Battery Low (800-1200lm)* EL2 = Emergency Battery High (1600-2000lm)* OC = Internal Occupancy Sensor PH = Phillips Head Screw *Emerg Battery requires additional back box (must specify). Has integral push button test switch located on back box.			Accessory BB = Back Box* *Required for Emergency Battery.



New Star Lighting

2225 W Pershing Rd, Chicago, IL 60609
 (773) 847-1400
www.newstarlighting.com

Specifications and dimensions are subject to change without notice. For additional options and dimensional details, please consult your New Star Lighting representative.

© 2025, New Star Lighting. All rights reserved. Unauthorized duplication or distribution is prohibited.

SPECIFICATIONS

CONSTRUCTION: 22-Gauge cold rolled steel internally reinforced housing.

LENS: .10" Linear frosted UV-stabilized polycarbonate lens for even light distribution.

LED: Available in three color temperatures 3500K, 4000K and 5000K with maximum 3-step MacAdam variation allowance. Other color temperatures available, consult factory. Minimum 50,000 hours with 70% lumen maintenance in a 25°C temperature ambient environment, compliant with IES LM-80 testing standards.

ELECTRICAL: 120-347VAC 50/60Hz, constant current 0-10V driver, 1200mA Current Output, 82CRI. (<20% THD, >0.9 PF). Wattage selectable: 40W/50W/56W.

REFLECTOR: 22 -Gauge cold rolled steel in high reflective white finish.

FASTENERS: Tamper resistant Torx® head screws with center pin reject. Optional Phillips screws available.

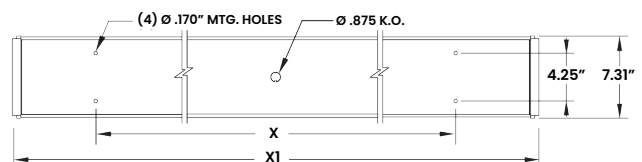
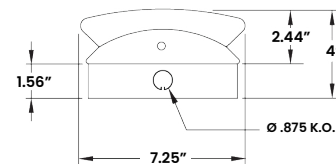
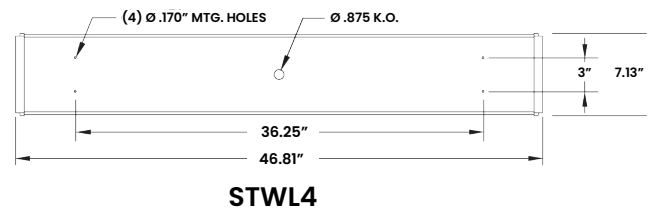
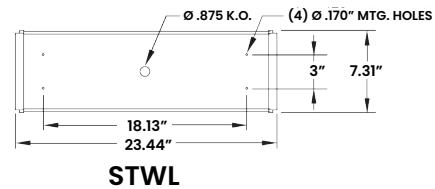
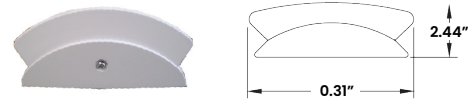
FINISH: White polyester powder coat finish following multistage iron phosphate pretreatment.

INSTALLATION: Surface wall mount installation. J-Box and hardware by others.

WARRANTY: New Star Promise.

LABEL: Fixture is certified to UL standards by Intertek Testing Laboratory for Damp Locations.

DIMENSIONAL DATA



The Stairwell Series is covered by our New Star Promise.

Our promise means we will repair or replace any of our High Abuse or Vandal-Resistant architectural luminaires when installed according to our instructions for the life of the original installation if the fixture should fail due to physical abuse*.

*Damage caused by gunfire and chemical reactions is not covered by the New Star Promise.



New Star Lighting

2225 W Pershing Rd, Chicago, IL 60609
(773) 847-1400
www.newstarlighting.com

Specifications and dimensions are subject to change without notice. For additional options and dimensional details, please consult your New Star Lighting representative.

© 2025, New Star Lighting. All rights reserved. Unauthorized duplication or distribution is prohibited.

STARTRANS STAIRWELL SERIES



PERFORMANCE DATA

*LEDs are frequently updated therefore values may change without notice.

MODEL	OUTPUT	COLOR TEMP.	LUMENS DELIVERED	EFFICACY (lm/w)	INPUT POWER (W)
STWL2	L2 =Standard	4000K	1500	100	15
STWL4	L2L = Low	4000K	3440	86	40
	L2 = Standard	4000K	5160	86	60



New Star Lighting

2225 W Pershing Rd, Chicago, IL 60609
(773) 847-1400
www.newstarlighting.com

Specifications and dimensions are subject to change without notice. For additional options and dimensional details, please consult your New Star Lighting representative.

© 2025, New Star Lighting. All rights reserved. Unauthorized duplication or distribution is prohibited.