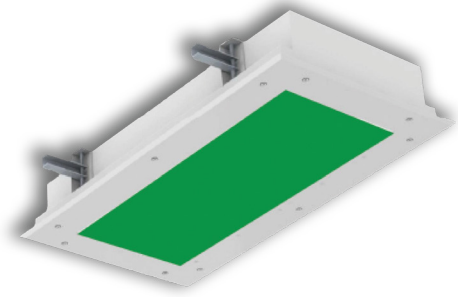


PROJECT: _____
 TYPE: _____
 PRODUCT: _____
 APPROVED BY: _____



StarSurgical™ Recessed Green Series

PRODUCT FEATURES

- Intended for Surgical Suites, Operating Rooms, Burn Units, and more
- Recessed grid or flange surgical troffer available in a 1x2, 1x4, 2x2, 2x4 dimensions
- Green 530nm LED lighting for increased visual comfort. Available with green LEDs only or a combination of green and white LEDs
- Available with symmetric or asymmetric acrylic lens
- Certified IP65 per IEC60598. Meets ISO 3 (Fed Std. 209E/ Class 1) cleanroom rating. NSF2 Splash/Non-Food Zone
- This product is Made in America and complies with the Buy American Act (BAA) and the Build America, BuyAmerica Act (BABAA)

ORDERING INFORMATION

Example: SSR14-HC/OC-G1W240-90C-1C-A-UN



SS	R	/					
Series	Mounting R = Recessed (Grid/Flange)	Nominal Size* 12 = 1x2 14 = 1x4 22 = 2x2 24 = 2x4 *Nominal size. Dimensional data on Page 2.	Housing HC = 20Ga. CRS Painted HS = 20Ga. 304 SS Brushed HP = 20Ga. 304 SS Painted HA = 16Ga. Alum. Painted	Frame* INSET (I)* or OVERLAP (O) OC = 18Ga. CRS Painted OS = 18Ga. 304 SS Brushed OP = 18Ga. 304 SS Painted OA = 16Ga. Alum. Painted IC = 20Ga. CRS Painted* IA = 16Ga. Alum. Painted* IB = 20Ga. 304 SS Brushed* IS = 20Ga. 304 SS Painted*	Green/White LED* SSR12-14: GN2 = 2 Green LEDs GN3 = 3 Green LEDs G1W2 = 1 Green/2 White G2W2 = 2 Green/1 White CL = Custom Lumen Output** SSR22-24: GN2 = 2 Green LEDs GN4 = 4 Green LEDs GN6 = 6 Green LEDs GN8 = 8 Green LEDs*** G2W2 = 2 Green/2 White G2W4 = 2 Green/4 White G2W6 = 2 Green/6 White G4W2 = 4 Green/2 White G6W2 = 6 Green/2 White CL = Custom Lumen Output** *Subject to change. Data on page 3. **Must be specified at time of quote. Must not exceed fixture maximum output. ***N/A w/ SSR22 Custom set driver to maximum wattage allowed. ****if only Green is specified, it allows for inboard /outboard control. Green and White circuits will be independently controlled.	White Color Temp. 0 = No White LEDs 35 = 3500K 40 = 4000K 50 = 5000K	CRI 80C = 80 CRI 90C = 90 CRI

Circuits 1C = 1 Circuit* 2C = 2 Circuits *N/A with Green and White configuration.	Lens A = .125 Prismatic Acrylic E = .125 White Frosted Poly. H = .125 White Frosted Acrylic S = .125 Asymmetric Acrylic and .080 White Frost Acrylic diffuser	Voltage 12 = 120V 27 = 277V 34 = 347V UN = Universal (120V-277V)	Driver DMI = 0-10V Dimming with 1-100% range SD2 = Step Dim. Driver (50-100%) SD3 = Step Dim. Driver (30-70-100%)	Options FZ1 = Fuse (120V) FZ2 = Fuse (277V) EL1 = Emerg. Batt. LED Low (10W)* EL2 = Emerg. Batt. LED High (20W)* TH = Tamper-resistant Torx® head fasteners RM = Row Mount** TGG = Triple Gasketing (Grid) TGF = Triple Gasketing (Grid) IP66 = IP66 Rated (Overlapping frame only) MS = MIL-STD-461G*** P442 = NSF P442 Certified (Required for BSL 1-4) *SSR12 Remote Battery. Consult factory for CA Title 24 options. **Joiner bracket supplied. Fixture dimensions subject to change. Consult factory for custom wiring or knockouts. ***N/A with UN voltage, must specify voltage.
---	--	---	---	--



New Star Lighting

2225 W Pershing Rd, Chicago, IL 60609
 (773) 847-1400
 www.newstarlighting.com

Specifications and dimensions are subject to change without notice. For additional options and dimensional details, please consult your New Star Lighting representative.

SPECIFICATIONS

HOUSING: 20-Gauge formed cold rolled steel housing with continuous seam welds. Aluminum and stainless steel options available.

DOORFRAME: Inset or overlapping doorframe available in aluminum, cold rolled steel, and stainless steel. Extruded inset door available in anodized aluminum or white painted aluminum (Not IP65 rated). Frame secured to housing via aircraft cable.

LENS: Available with symmetric or asymmetric acrylic. Asymmetric lens serves as inner lens with a .080 white frosted acrylic outer lens for smooth surface. Optional prismatic acrylic or polycarbonate lens installed with smooth side out (does not require additional outer lens). Inset (cold rolled steel, stainless steel and .050 alum).

LED: Available with 530nm Green LED, or a combination of Green/White LEDs. Green LEDs will be installed every other row, unless otherwise specified. White LEDs available in three color temperatures 3500K, 4000K and 5000K with maximum 3-step MacAdam variation allowance. Other color temperatures available, consult factory. Minimum 50,000 hours with 70% lumen maintenance in a 25°C ambient temperature environment, compliant with IES LM-80 testing standards.

ELECTRICAL: 120-277VAC or 347VAC 50/60HZ electrical input high power factor electronic, constant current driver (<20% THD, >0.90 PF). Each function is independently circuited for individual control. Standard 0-10V dimming with 1-100% range. Step dimming options available.

FASTENERS: Stainless steel Philips flat head fasteners with captive cage nuts. Finish to match housing.

FINISH: White antimicrobial polyester powder coat finish following multi-stage iron phosphate pretreatment.

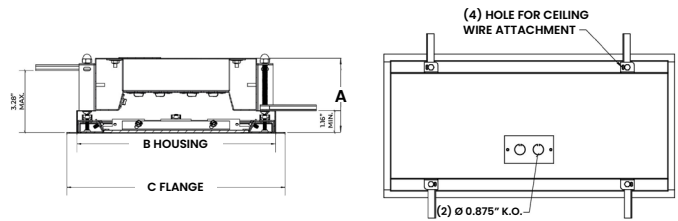
INSTALLATION: Universal recessed mounting accommodates Grid and Flange installations. Luminaires will be supplied with adjustable swing arms that can be used for Flange applications or secured to the side of housing for Grid applications. Compatible with 1-1/2" and 15/16" Grid systems. Mounting for custom ceilings available, consult factory.

WARRANTY: 5 Year Warranty.

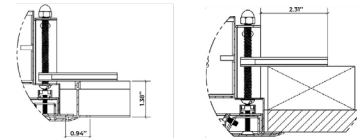
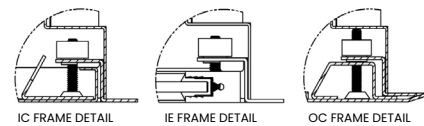
LABEL: Certified IP65 per IEC60598. Meets ISO 3 (Fed Std. 209E/ Class 1) cleanroom rating. NSF2 Splash/Non-Food Zone. This product was Made in America and complies with the Buy American Act (BAA) and the Build America, Buy America Act (BABAA).

DIMENSIONAL DATA

Fixture weight varies and is dependent upon chosen specifications. Consult factory for additional information. Average weight of the SSR14 is 27lb. Average weight of the SSR24 is 48lb.

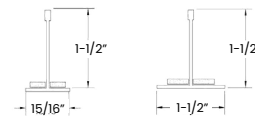


	A	B	C	REC. CEILING CUT-OUT
SSR12	4.00"	10.64" X 22.64"	11.69" X 23.69"	10.88" X 22.88"
SSR14	4.00"	10.64" X 46.64"	11.69" X 47.69"	10.88" X 46.88"
SSR22	4.00"	22.64" X 22.64"	23.69" X 23.69"	22.88" X 22.88"
SSR24	4.00"	22.64" X 46.64"	23.69" X 47.69"	22.88" X 46.88"

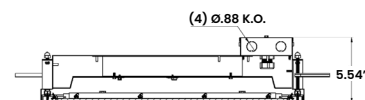


SSR (W/OC FRAME) RECESSED GRID SSR (W/OC FRAME) RECESSED FLANGE

GRID COMPATIBILITY:
 SSR12: Spaced at 12" x 24" Centers
 SSR14: Spaced at 12" x 48" Centers
 SSR22: Spaced at 24" x 24" Centers
 SSR24: Spaced at 24" x 48" Centers



SSR with P442 Backbox:



New Star Lighting

2225 W Pershing Rd, Chicago, IL 60609
 (773) 847-1400
 www.newstarlighting.com

Specifications and dimensions are subject to change without notice. For additional options and dimensional details, please consult your New Star Lighting representative.

© 2026, New Star Lighting. All rights reserved. Unauthorized duplication or distribution is prohibited.

PERFORMANCE DATA

MODEL	OUTPUT	LUMENS DELIVERED	EFFICACY (lm/w)	INPUT POWER (W)
SS12	GN2 = 2 Green Rows	1450	52	28
	GN3 = 3 Green Rows	2200	52	42
SS14	GN2 = 2 Green Rows	2900	52	56
	GN3 = 3 Green Rows	4400	52	84
SS22	GN2 = 2 Green Rows	1375	49	28
	GN4 = 4 Green Rows	2750	49	56
	GN6 = 6 Green Rows	4100	49	84
SS24	GN2 = 2 Green Rows	3250	59	55
	GN4 = 4 Green Rows	6450	59	110
	GN6 = 6 Green Rows	9800	59	165
	GN8 = 8 Green Rows	12400	59	

MODEL	OUTPUT	COLOR TEMP.	LUMENS DELIVERED	EFFICACY (lm/w)	INPUT POWER (W)
SS12	G1W2 1 Green/2 White	3500K	2875	115	25
		4000K	3000	120	25
		5000K	3125	125	25
		Green	725	52	14
	G2W1 2 Green/1 White	3500K	1438	115	12.5
		4000K	1500	120	12.5
		5000K	1563	125	12.5
		Green	1450	36	28
SS14	G1W2 1 Green/2 White	3500K	5750	115	50
		4000K	6000	120	50
		5000K	6250	125	50
		Green	1450	52	28
	G2W1 2 Green/1 White	3500K	2875	115	25
		4000K	3000	120	25
		5000K	3125	125	25
		Green	2900	52	56



New Star Lighting

2225 W Pershing Rd, Chicago, IL 60609
(773) 847-1400
www.newstarlighting.com

Specifications and dimensions are subject to change without notice. For additional options and dimensional details, please consult your New Star Lighting representative.

© 2026, New Star Lighting. All rights reserved. Unauthorized duplication or distribution is prohibited.

PERFORMANCE DATA CONTINUED

MODEL	OUTPUT	COLOR TEMP.	LUMENS DELIVERED	EFFICACY (lm/W)	INPUT POWER (W)
SS22	G2W2 2 Green/2 White	3500K	3000	120	25
		4000K	3125	125	25
		5000K	3250	130	25
		Green	1375	49	28
	G2W4 2 Green/4 White	3500K	6000	120	50
		4000K	6250	125	50
		5000K	6500	130	50
		Green	1375	49	28
	G2W6 1 Green/2 White	3500K	8625	115	75
		4000K	9000	120	75
		5000K	9375	125	75
		Green	1375	49	28
	G4W2 2 Green/1 White	3500K	3000	120	25
		4000K	3125	125	25
		5000K	3250	130	25
		Green	2750	49	28
	G6W2 6 Green/2 White	3500K	3000	120	25
		4000K	3125	125	25
		5000K	3250	130	25
		Green	4100	49	84



New Star Lighting

2225 W Pershing Rd, Chicago, IL 60609
(773) 847-1400
www.newstarlighting.com

Specifications and dimensions are subject to change without notice. For additional options and dimensional details, please consult your New Star Lighting representative.

© 2026, New Star Lighting. All rights reserved. Unauthorized duplication or distribution is prohibited.

PERFORMANCE DATA CONTINUED

MODEL	OUTPUT	COLOR TEMP.	LUMENS DELIVERED	EFFICACY (lm/W)	INPUT POWER (W)
SS24	G2W2 2 Green/2 White	3500K	6000	120	50
		4000K	6250	125	50
		5000K	6500	130	50
		Green	3250	59	55
	G2W4 2 Green/4 White	3500K	12000	120	100
		4000K	12500	125	100
		5000K	13000	130	100
		Green	3250	59	55
	G2W6 1 Green/2 White	3500K	17250	115	150
		4000K	18000	120	150
		5000K	18750	125	150
		Green	3250	59	55
	G4W2 2 Green/1 White	3500K	6000	120	50
		4000K	6250	125	50
		5000K	6500	130	50
		Green	6450	59	110
	G6W2 6 Green/2 White	3500K	6000	120	50
		4000K	6250	125	50
		5000K	6500	130	50
		Green	9800	59	165



New Star Lighting

2225 W Pershing Rd, Chicago, IL 60609
(773) 847-1400
www.newstarlighting.com

Specifications and dimensions are subject to change without notice. For additional options and dimensional details, please consult your New Star Lighting representative.

© 2026, New Star Lighting. All rights reserved. Unauthorized duplication or distribution is prohibited.