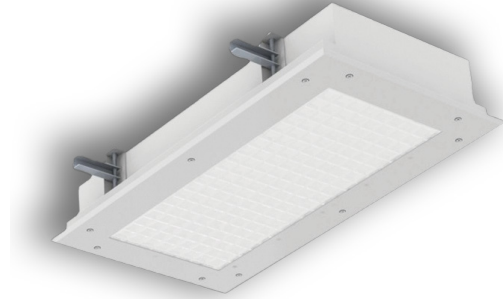


PROJECT: \_\_\_\_\_  
 TYPE: \_\_\_\_\_  
 PRODUCT: \_\_\_\_\_  
 APPROVED BY: \_\_\_\_\_

## PRODUCT FEATURES

- Intended for Surgical Suites, Operating Rooms, Examination Rooms, and more
- Recessed grid or flange surgical troffer available in a 1x2, 1x4, 2x2, 2x4 dimensions
- Available with asymmetric acrylic lens
- Certified IP65 per IEC60598. Meets ISO 3 (Fed Std. 209E/ Class 1) cleanroom rating. NSF2 Splash/Non-Food Zone. Suitable for Biosafety Labs rated BSL 1 to 4. BSL Levels 3 & 4 require specifying optional NSF Protocol P442 rating
- This product is Made in America and complies with the Buy American Act (BAA) and the Build America, Buy America Act (BABAA)



SSR

## ORDERING INFORMATION

Example: SSR14-HC/OC-L440-90C-1C-A-UN-DMI



| SS            | R   | /  |  |   |  |  |  |
|---------------|---|--|--|---|--|--|--|
| <b>Series</b> | <b>Mounting</b><br>R = Recessed (Grid/Flange) | <b>Nominal Size*</b><br>12 = 1x2<br>14 = 1x4<br>22 = 2x2<br>24 = 2x4<br><br>*Nominal size. Dimensional data on Page 2. | <b>Housing</b><br>HC = 20Ga. CRS Painted<br>HS = 20Ga. 304 SS Brushed<br>HP = 20Ga. 304 SS Painted<br>HA = 16Ga. Alum. Painted | <b>Frame*</b><br>INSET (I)* or OVERLAP (O)<br>OC = 18Ga. CRS Painted<br>OS = 18Ga. 304 SS Brushed<br>OP = 18Ga. 304 SS Painted<br>OA = 16Ga. Alum. Painted<br>IC = 20Ga. CRS Painted*<br>IA = 16Ga. Alum. Painted*<br>IB = 20Ga. 304 SS Brushed*<br>IS = 20Ga. 304 SS Painted*<br><br>*Inset frames (I) suitable for Biosafety Labs (BSL) rated 1-2 only. | <b>Lumen Output*</b><br><b>SSS12-14:</b><br>L2 = Low<br>L3 = Standard<br>L4 = High<br>CL = Custom Lumen Output**<br><b>SSS22-24:</b><br>L2 = Low<br>L4 = Standard<br>L6 = Medium<br>L8 = High<br>CL = Custom Lumen Output**<br><br>*Subject to change. Performance Data on page 3.<br>** Must be specified at time of quote. Must not exceed fixture maximum output. | <b>Color Temp.</b><br>35 = 3500K<br>40 = 4000K<br>50 = 5000K | <b>CRI</b><br>80C = 80 CRI<br>90C = 90 CRI |

|  |   |   |   |   |
|--|---|---|---|---|
| <b>Circuits</b><br>1C = 1 Circuit<br>2C = 2 Circuits*<br><br>*Allows for Inboard/ Outboard control. N/A with L2.<br>2C not available with L2 Lumen Output options. | <b>Lens</b><br>A = .125 Prismatic Acrylic<br>E = .125 White Frosted Poly.<br>H = .125 White Frosted Acrylic<br>S = .125 Asymmetric Acrylic with .080 White Frost Acrylic diffuser | <b>Voltage</b><br>12 = 120V<br>27 = 277V<br>34 = 347V<br>UN = Universal (120V-277V) | <b>Driver</b><br>DM1 = 0-10V Dimming with 1-100% range<br>SD2 = Step Dim. Driver (50-100%)<br>SD3 = Step Dim. Driver (30-70-100%) | <b>Options</b><br>FZ1 = Fuse (120V)<br>FZ2 = Fuse (277V)<br>EL1 = Emerg. Batt. LED Low (10W)*<br>EL2 = Emerg. Batt. LED High (20W)*<br>RF1 = (RIF) Radio Interference Filter (120V)<br>RF2 = (RIF) Radio Interference Filter (277V)<br>TH = Torx® Head screws (with center pin)<br>RM = Row Mount**<br>IP66 = IP66 Rated (Overlapping frame only)<br>MS = MIL-STD-461G***<br>P442 = NSF P442 Certified (Required for BSL 1-4)****<br><br>*SSR12 Remote Battery. Consult factory for CEC Compliance. If stored, batteries should be fully recharged every six months and kept between 0°C-25°C to maintain optimal battery capacity.<br>** Joiner bracket supplied. Fixture dimensions subject to change. Consult factory for custom wiring or knockouts.<br>***N/A with UN voltage, must specify voltage.<br>****Requires additional backbox, see dimensional data for details. |
|--|---|---|---|---|

## SPECIFICATIONS

**HOUSING:** 20-Gauge formed cold rolled steel housing with continuous seam welds. Aluminum and stainless steel options available.

**DOORFRAME:** Inset or overlapping doorframe available in aluminum, cold rolled steel, and stainless steel. Extruded inset door available in anodized aluminum or white painted aluminum (Not IP65 rated). Frame secured to housing via aircraft cable.

**LENS:** Available with asymmetric acrylic lens. Asymmetric lens serves as inner lens with a .080 white frosted acrylic outer lens for a smooth surface. Optional prismatic acrylic or polycarbonate installed with smooth side out and does not require additional outer lens. Inset and Overlapping frames use a rail hold down system.

**LED:** Available in three color temperatures 3500K, 4000K and 5000K with maximum 3-step MacAdam variation allowance. Other color temperatures available, consult factory. Minimum 50,000 hours with 70% lumen maintenance in a 25°C ambient temperature environment, compliant with IES LM-80 testing standards.

**ELECTRICAL:** 120-277VAC or 347VAC 50/60HZ electrical input high power factor electronic, constant current driver (<20% THD, >0.90 PF). Each function is independently circuited for individual control. Standard 0-10V dimming with 1-100% range. Step dimming options available.

**FASTENERS:** Stainless steel Philips flat head screws with captive cage nuts. Finish to match doorframe.

**FINISH:** White antimicrobial polyester powder coat finish following multi-stage iron phosphate pretreatment.

**GASKET:** Closed cell EPDM and closed cell silicone gaskets prevent air contaminations from entering the fixture. Gasketing seals lens to doorframe and doorframe to housing. Optional triple gasketing seals between the fixture and the ceiling. Must specify Grid or Flange installation.

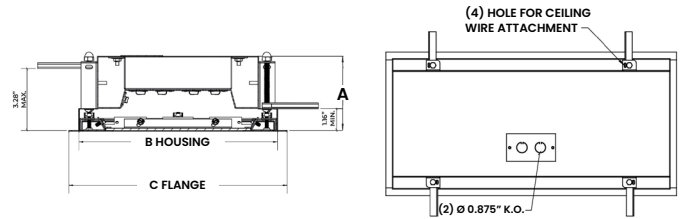
**INSTALLATION:** Universal recessed mounting accommodates Grid and Flange installations. Luminaires will be supplied with adjustable swing arms that can be used for Flange applications or secured to the side of housing for Grid applications. Compatible with 1-1/2" and 15/16" Grid systems. Mounting for custom ceilings available, consult factory.

**WARRANTY:** 5 Year Warranty.

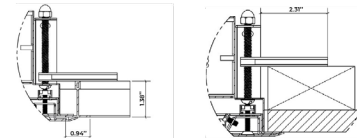
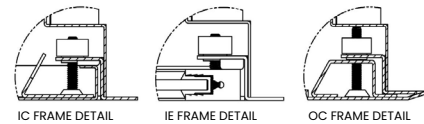
**LABEL:** Certified IP65 per IEC60598. Meets ISO 3 (Fed Std. 209E/ Class 1) cleanroom rating. NSF2 Splash/Non-Food Zone. Suitable for Biosafety Labs rated BSL 1 to 4. BSL Levels 3 & 4 require specifying optional NSF Protocol P442 rating. This product was Made in America and complies with the Buy American Act (BAA) and the Build America, Buy America Act (BABAA).

## DIMENSIONAL DATA

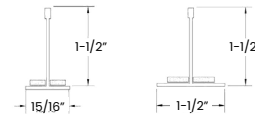
Fixture weight varies and is dependent upon chosen specifications. Consult factory for additional information. Average weight of the SSR14 is 27lb. Average weight of the SSR24 is 48lb.



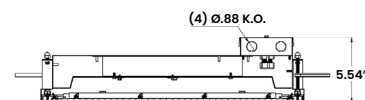
|       | A     | B               | C               | REC. CEILING CUT-OUT |
|-------|-------|-----------------|-----------------|----------------------|
| SSR12 | 4.00" | 10.64" X 22.64" | 11.69" X 23.69" | 10.88" X 22.88"      |
| SSR14 | 4.00" | 10.64" X 46.64" | 11.69" X 47.69" | 10.88" X 46.88"      |
| SSR22 | 4.00" | 22.64" X 22.64" | 23.69" X 23.69" | 22.88" X 22.88"      |
| SSR24 | 4.00" | 22.64" X 46.64" | 23.69" X 47.69" | 22.88" X 46.88"      |



**GRID COMPATIBILITY:**  
 SSR12: Spaced at 12" x 24" Centers  
 SSR14: Spaced at 12" x 48" Centers  
 SSR22: Spaced at 24" x 24" Centers  
 SSR24: Spaced at 24" x 48" Centers



SSR with P442 Backbox:



## PERFORMANCE DATA

\*Data is with 80 CRI chip. LEDs are frequently updated therefore values may change without notice.

| MODEL | OUTPUT        | COLOR TEMP. | LUMENS DELIVERED | EFFICACY (lm/w) | INPUT POWER (W) |
|-------|---------------|-------------|------------------|-----------------|-----------------|
| SSR12 | L2 = LOW      | 3500K       | 2875             | 115             | 25              |
|       |               | 4000K       | 3000             | 120             | 25              |
|       |               | 5000K       | 3125             | 125             | 25              |
|       | L3 = STANDARD | 3500K       | 4180             | 110             | 38              |
|       |               | 4000K       | 4370             | 115             | 38              |
|       |               | 5000K       | 4560             | 120             | 38              |
|       | L4 = HIGH     | 3500K       | 5500             | 110             | 50              |
|       |               | 4000K       | 5750             | 115             | 50              |
|       |               | 5000K       | 6000             | 120             | 50              |
| SSR14 | L2 = LOW      | 3500K       | 5750             | 115             | 50              |
|       |               | 4000K       | 6000             | 120             | 50              |
|       |               | 5000K       | 6250             | 125             | 50              |
|       | L3 = STANDARD | 3500K       | 8250             | 110             | 75              |
|       |               | 4000K       | 8625             | 115             | 75              |
|       |               | 5000K       | 9000             | 120             | 75              |
|       | L4 = HIGH     | 3500K       | 11000            | 110             | 100             |
|       |               | 4000K       | 11500            | 115             | 100             |
|       |               | 5000K       | 12000            | 120             | 100             |
| SSR22 | L2 = LOW      | 3500K       | 3000             | 120             | 25              |
|       |               | 4000K       | 3125             | 125             | 25              |
|       |               | 5000K       | 3250             | 130             | 25              |
|       | L4 = STANDARD | 3500K       | 6000             | 120             | 50              |
|       |               | 4000K       | 6250             | 125             | 50              |
|       |               | 5000K       | 6500             | 130             | 50              |
|       | L6 = MEDIUM   | 3500K       | 8625             | 115             | 75              |
|       |               | 4000K       | 9000             | 120             | 75              |
|       |               | 5000K       | 9375             | 125             | 75              |
|       | L8 = HIGH     | 3500K       | 11500            | 115             | 100             |
|       |               | 4000K       | 12000            | 120             | 100             |
|       |               | 5000K       | 12500            | 125             | 100             |



**New Star Lighting**

2225 W Pershing Rd, Chicago, IL 60609  
 (773) 847-1400  
[www.newstarlighting.com](http://www.newstarlighting.com)

Specifications and dimensions are subject to change without notice. For additional options and dimensional details, please consult your New Star Lighting representative.

© 2026, New Star Lighting. All rights reserved. Unauthorized duplication or distribution is prohibited.

## PERFORMANCE DATA CONTINUED

\*Data is with 80 CRI chip. LEDs are frequently updated therefore values may change without notice.

| MODEL | OUTPUT        | COLOR TEMP. | LUMENS DELIVERED | EFFICACY (lm/w) | INPUT POWER (W) |
|-------|---------------|-------------|------------------|-----------------|-----------------|
| SSR24 | L2 = LOW      | 3500K       | 6000             | 120             | 50              |
|       |               | 4000K       | 6250             | 125             | 50              |
|       |               | 5000K       | 6500             | 130             | 50              |
|       | L4 = STANDARD | 3500K       | 12000            | 120             | 100             |
|       |               | 4000K       | 12500            | 125             | 100             |
|       |               | 5000K       | 13000            | 130             | 100             |
|       | L6 = MEDIUM   | 3500K       | 17250            | 115             | 150             |
|       |               | 4000K       | 18000            | 120             | 150             |
|       |               | 5000K       | 18750            | 125             | 150             |
|       | L8 = HIGH     | 3500K       | 23000            | 115             | 200             |
|       |               | 4000K       | 24000            | 120             | 200             |
|       |               | 5000K       | 25000            | 125             | 200             |



**New Star Lighting**

2225 W Pershing Rd, Chicago, IL 60609  
 (773) 847-1400  
[www.newstarlighting.com](http://www.newstarlighting.com)

Specifications and dimensions are subject to change without notice. For additional options and dimensional details, please consult your New Star Lighting representative.

© 2026, New Star Lighting. All rights reserved. Unauthorized duplication or distribution is prohibited.