

PROJECT: _____

TYPE: _____

PRODUCT: _____

APPROVED BY: _____

PRODUCT FEATURES

- Intended for Fall Prevention in healthcare settings, including Patient Rooms, Patient Bathrooms, Corridors, Lobbies, Waiting Rooms, Nurses’ Stations, and more
- Faceplate constructed of durable cast zinc-magnesium and features integral embedded driver (5W max.)
- 3 Face plates styles: horizontal louver, horizontal hood and open frame with diffuse lens
- Available in 3000K White, Amber & Blue LED
- Certified to UL standards by Intertek Testing Laboratories for Wet Location. IP65 certified per IEC60598



SNL Series

ORDERING INFORMATION

Example: SNL3-OF-L30-80C-12-W



SNL3		L		80C
Series	Faceplate OF = Open HL = Horizontal Louver HH = Horizontal Hood	Source L = LED	Color Temp. 30 = 3000K A = Amber A = Blue	CRI 80C = 80 CRI

Voltage 12 = 120V 27 = 277V	Finish W = White DB = Dark Bronze BN = Brushed Nickel	Options HB = Hanger Bars TH = Tamper-resistant Torx® head fasteners

SPECIFICATIONS

FACEPLATE: Durable cast zinc-magnesium in three styles: horizontal hood, open frame with diffused opal lens, or horizontal louver.

LENS: .125" White acrylic lens.

LED: Available in 3000K, Amber or Blue LED with maximum 3-step MacAdam variation allowance. Other color temperatures available, consult factory. Minimum 50,000 hours with 70% lumen maintenance in a 25°C ambient temperature environment, compliant with IES LM-80 testing standards.

ELECTRICAL: 120VAC or 277VAC 50/60HZ integrated, embedded Driver Max @ 5 watt 3.6 watt normal.

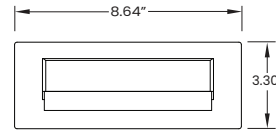
FINISH: White or Dark Bronze antimicrobial polyester powder coat finish following multi-stage iron phosphate pretreatment on all exposed room-side painting surfaces, unless otherwise specified. Brushed Nickel is also available.

INSTALLATION: Recessed with Integral backbox.

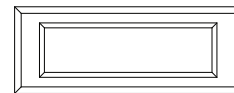
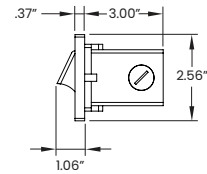
WARRANTY: 5 Year Warranty.

LABEL: Certified to UL standards by Intertek Testing Laboratories for, IP65 certified per IEC60598.

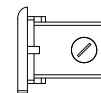
DIMENSIONAL DATA



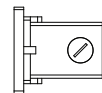
HORIZONTAL HOOD



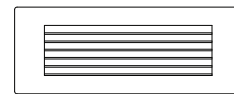
**OPEN FRAME WITH
DIFFUSED OPAL LENS**



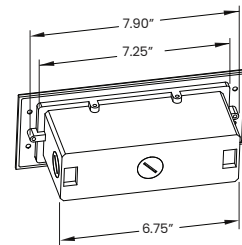
**OPEN FRAME WITH
DIFFUSED OPAL LENS**



HORIZONTAL LOUVER



HORIZONTAL LOUVER



New Star Lighting

2225 W Pershing Rd, Chicago, IL 60609
(773) 847-1400
www.newstarlighting.com

Specifications and dimensions are subject to change without notice. For additional options and dimensional details, please consult your New Star Lighting representative.

© 2026, New Star Lighting. All rights reserved. Unauthorized duplication or distribution is prohibited.