

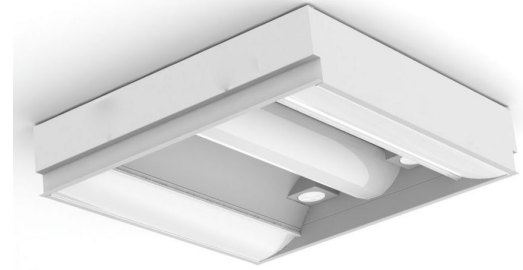
STARMED™ DOS+1 SERIES



PROJECT: _____
 TYPE: _____
 PRODUCT: _____
 APPROVED BY: _____

PRODUCT FEATURES

- Intended for Patient Rooms, Skilled Nursing, Examination Rooms, and more
- Multi-function 3-compartment Exam, Ambient, Reading functions, available in 2x2 and 2x4
- Recessed Grid and Flange installation
- This product was Made in America and complies with the Buy American Act (BAA), and the Build America, Buy America Act (BABAA)



SMDOS Series



ORDERING INFORMATION

Example: SMDOSG24-HC/ICA-L340-L240-RL-FA-90C-UN-DMI

SMDOS							
Series	Mounting G = Grid F = Flange	Size* 22 = 2x2 24 = 2x4 *Nominal Size. Dimensional Data on Page 2.	Housing HC = 20Ga. CRS Painted HP = 20Ga. SS Painted HA = 16Ga. Alum. Painted	Frame Lens* blank = No Lens A = .125 Clear Poly. 1 = .187 Clear Poly. *If no frame is selected, no frame lens will be provided.	Ambient Lumen Output* L1 = Low L2 = Medium L3 = High *Subject to change. Performance data on Page 3. Ambient lens is a White. Poly.	Ambient Color Temp. 35 = 3500K 40 = 4000K 50 = 5000K TW1 = Tunable White 2700K to 5000K* TW2 = Tunable White 2700K to 6500K* *Available for ambient function. *BIOS drivers only work with BIOS LEDs. Must select STC or DMB option, otherwise leave field blank and standard 0-10V driver will be provided. **0-10V with Dimming from 1%-100%. ***0-10V Intensity Dimming to 1% and Dim-to-Dark capabilities.	BIOS Options:* BIOS Color Temp.** B30 = 3000K B35 = 3500K B40 = 4000K BIOS Tunable CCT** BTW1 = 2700K-3500K BTW2 = 2700K-4000K
Exam Lumen Output L1 = Low L2 = High			Exam Color Temp.* 35 = 3500K 40 = 4000K 50 = 5000K *Selected CCT will be the same for ambient and exam functions.		Reading Light blank = None RL = 2 LED Lights* L1 = Low L2 = High *3000K non-dimmable swivel puck lights.		Exam Lens CA = Clear Ribbed Acrylic FA = Frosted Ribbed Acrylic
					90C		CRI 90C = 90 CRI
							Voltage 12 = 120V 27 = 277V UN = Universal (120V-277V)
Driver DMI = 0-10V Dimming to 1% Tunable White Driver*: TWD = 2-Channel 0-10V DALI8 DALI8 = 1-Channel DALI8 BIOS Driver**: STC = Static BIOS*** DMB = Dynamic BIOS Dimming**** *Tunable White Driver requires choice of TW1 or TW2 in Color Temp. column. **BIOS drivers only work with BIOS LEDs. Must select STC or DMB option, otherwise leave field blank and standard 0-10V driver will be provided. ***0-10V with Dimming from 1%-100%. ****0-10V Intensity Dimming to 1% and Dim-to-Dark capabilities.			Control LV3 = Dimming Low Voltage Controller* *LV3 controls ambient function with dimming and on/off reading function. Exam and Night Light (if specified) are non-dimming and provided on separate line voltage circuits. N/A with emergency battery.		Options FZ1 = Fuse (120V) FZ2 = Fuse (277V) RF = (RIF) Radio Interference Filter AML = Antimicrobial Lens (Ambient and Exam)* LN = LED Night Light** *N/A with frame. **3500K non-dimming Night Light with integrated switch allows light levels at 100%, 70%, 40% and 10%. Located in Ambient compartment. N/A with High Ambient Lumen Output (L3). ***Illuminate Ambient compartment. Integral test switch located on reflector.		



New Star Lighting

2225 W Pershing Rd, Chicago, IL 60609
 (773) 847-1400
 www.newstarlighting.com

Specifications and dimensions are subject to change without notice. For additional options and dimensional details, please consult your New Star Lighting representative.

© 2025, New Star Lighting. All rights reserved. Unauthorized duplication or distribution is prohibited.

SPECIFICATIONS

HOUSING: 20-Gauge formed cold rolled steel housing seam welded and ground smooth. Stainless steel or aluminum options available. Optional inset frame secured to housing with hinge and features clear polycarbonate lens for easy cleaning.

LENS: Inner Ambient lens is .125" white polycarbonate. Exam inner lens is available in clear ribbed acrylic or white frosted ribbed acrylic (recommended). If Outer frame lens is ordered, it is clear polycarbonate.

LED: Ambient and exam compartments available in three color temperatures 3500K, 4000K and 5000K with maximum 3-step MacAdam variation allowance. Tunable White also available, from 2700K - 5000K or 2700K - 6500K. Optional reading lights are non-dimmable and 3000K. Minimum 50,000 hours with 70% lumen maintenance in a 25°C ambient temperature environment, compliant with IES LM-80 testing standards.

Optional BIOS® SkyBlue® circadian solutions to produce the healthy "blue sky" light signal with blue spectrum peak at 490nm+ for circadian entrainment. Bio-Dimming™ reduces CCT by 2700K.

ELECTRICAL: 120-277VAC 50/60HZ electrical input high power factor electronic, constant current driver (<20% THD, >0.90 PF). Standard 0-10V dimming with 1-100% range for ambient lighting.

OPTIONAL TUNABLE WHITE DRIVERS:

DALI8 - DALI Type 8 (One DALI Address)

TWD - Two Channel 0-10V dimming; one channel for brightness, one channel for CCT

OPTIONAL BIOS DRIVER OPTIONS:

STC - BIOS control 0-10V with Dimming from 1%-100% and Dynamic Bios Dimming with 0-10V Intensity Dimming to 1% and Dim-to-Dark capabilities.

DMB - Dynamic BIOS control 0-10V with dynamic spectrum and BIOS SkyBlue® with Bio-Dimming™, which changes a spectral qualities by removing the SkyBlue component when dimming from 100%-51%, while light output remains relatively constant; CCT will decrease approximately 500K through bio-dimming; dimming from 50% to 1% will then reduce light output.

LOW VOLTAGE CONTROL: The Low Voltage Control (LVC3) option controls ambient function with dimming, and reading is non-dimming (on/off). The Exam and Night Light functions are on separate line voltage circuits. The Exam and Night Light functions are on separate line voltage circuits; the nightlight LED board has (4) settings that are field selectable. The exam is typically wired to a wall switch (by others) and is dimmable. Other configurations are available - consult factory. Leads are factory labeled for field installation. Controls and any additional accessories by others.

FINISH: White antimicrobial polyester powder coat finish following multi-stage iron phosphate pretreatment.

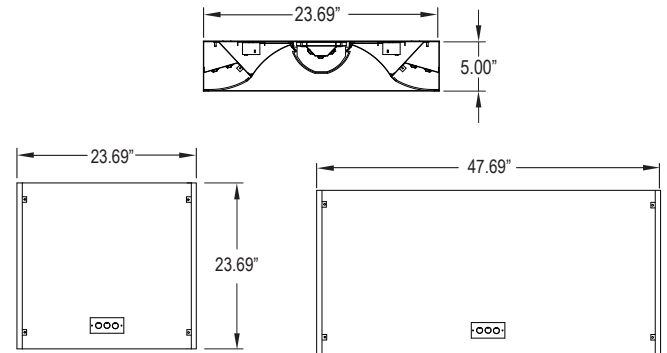
INSTALLATION: Recessed Grid and Flange mounting available. Flange fixtures supplied with yokes for installation. Hardware by others.

WARRANTY: 5 Year Warranty.

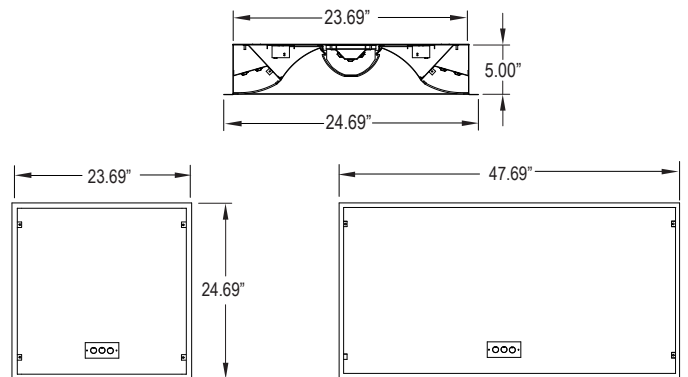
LABEL: Fixture is certified Damp Location to UL standards by Intertek Testing Laboratories. This product is Made in America and complies with Buy American Act (BAA), and the Build America, Buy America Act (BABAA).

DIMENSIONAL DATA

GRID:



FLANGE:



Flange Recommended Opening:

22: 24-1/16" x 23-1/8"

24: 24-1/16" x 47-1/8"



New Star Lighting

2225 W Pershing Rd, Chicago, IL 60609
(773) 847-1400
www.newstarlighting.com

Specifications and dimensions are subject to change without notice. For additional options and dimensional details, please consult your New Star Lighting representative.

© 2025, New Star Lighting. All rights reserved. Unauthorized duplication or distribution is prohibited.



PERFORMANCE DATA*

*LEDs are frequently updated therefore values may change without notice.

MODEL	FUNCTION	OUTPUT	COLOR TEMP	LUMENS DELIVERED	EFFICACY (lm/w)	INPUT POWER (W)
SMDOS22	Ambient	L1 = Low	4000K	1265	101	12.5
		L2 = Medium	4000K	2525	101	25
		L3 = High	4000K	3790	101	37.5
	Exam	L2 = High	4000K	5500	110	50
	Reading Light		3000K	1442	103	14
SMDOS24	Ambient	L1 = Low	4000K	2525	101	25
		L2 = Medium	4000K	5050	101	50
		L3 = High	4000K	7575	101	75
	Exam	L1 = Low	4000K	5500	110	50
		L2 = High	4000K	11000	110	100
	Reading Light		3000K	1442	103	14

THIS ONLY PERTAINS TO BIOS PERFORMANCE DATA*

*Data is with 80 CRI chip. LEDs are frequently updated therefore values may change without notice.

MODEL	FUNCTION	OUTPUT	LUMENS DELIVERED	EFFICACY (lm/W)	INPUT POWER (W)
 SMDOS22	Ambient	L1 = Low	1092	84	13
		L2 = Medium	2184	84	26
		L3 = High	3360	84	40
 SMDOS24		L1 = Low	2184	84	26
		L2 = Medium	4452	84	53
		L3 = High	6720	84	80



New Star Lighting

2225 W Pershing Rd, Chicago, IL 60609
(773) 847-1400
www.newstarlighting.com

Specifications and dimensions are subject to change without notice. For additional options and dimensional details, please consult your New Star Lighting representative.

© 2025, New Star Lighting. All rights reserved. Unauthorized duplication or distribution is prohibited.