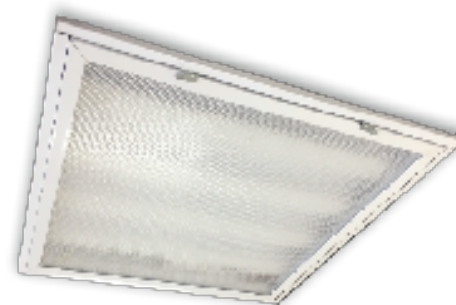


PROJECT: _____
 TYPE: _____
 PRODUCT: _____
 APPROVED BY: _____

PRODUCT FEATURES

- Intended for Cleanrooms, Laboratories, Food Processing Facilities, and more
- 10 Day Quick Ship for orders under 50 fixtures. Consult factory for large quantities or additional fixture options
- Available in 2 x 2 and 2 x 4
- Fixture is certified to UL standards by Intertek Testing Laboratory. Suitable for Wet Locations. Testing Laboratory, ISO Class 5 (Fed Std. 209E/ Class 100)
- This product is Made in America and complies with the Buy American Act (BAA)



SCU Quick Ship Series

ORDERING INFORMATION

Example: SCUG22-HC/IP-L440-1C-A-90C-UN-QS



SCU			G		HC		/ IP		40	
Series	Mounting G = Grid	Nominal Size*	Housing HC = 20Ga. CRS Painted	Inset Frame IP = Extruded Alum. Painted	Lumen Output* L4 = Standard L6 = High	Color Temp.* 40 = 4000K				
		22 = 2 x 2 24 = 2 x 4								
		*Nominal Size. Dimensional Data on Page 2.								

SPECIFICATIONS

HOUSING: 20-Gauge formed cold rolled steel housing.

FRAME: Inset extruded door available in aluminum. Door sealed to housing with latch.

LENS: .125" Prismatic acrylic lens.

LED: Available in 4000K with maximum 3-step MacAdam variation allowance. Other options available in standard offering. Minimum 50,000 hours with 70% lumen maintenance in a 25°C ambient temperature environment, compliant with IES LM-80 testing data.

ELECTRICAL: 120-277VAC 50/60Hz, constant current driver (<20% THD, >0.9 PF). Standard 0-10V Dimming with 10-100% range.

FINISH: White polyester powder coat finish following multi-stage iron phosphate pretreatment.

GASKET: Closed cell gasket prevents air contaminants from entering the fixture.

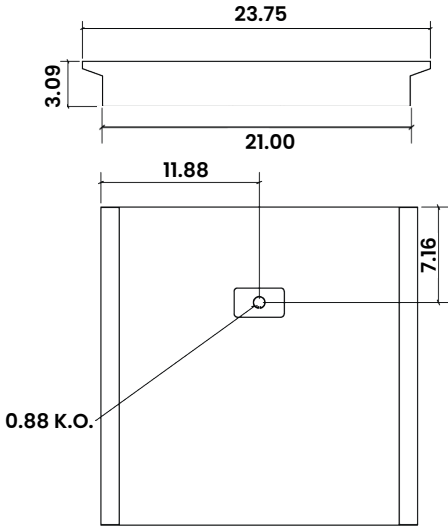
INSTALLATION: Grid mounting. Flange conversion kit available in options.

WARRANTY: 5 Year Warranty.

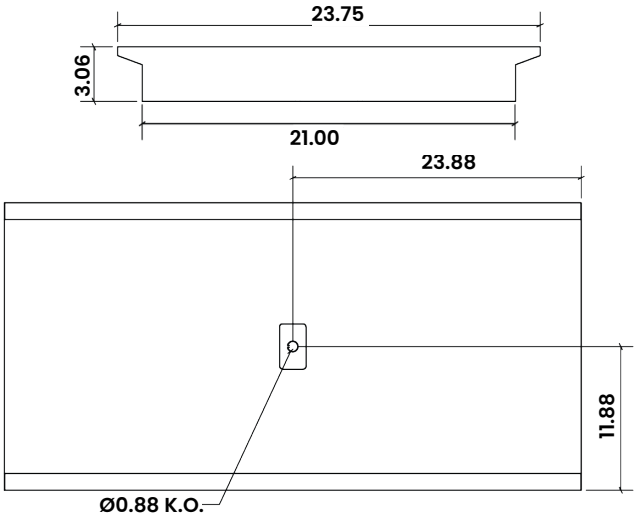
LABEL: Fixture is certified to UL standards by Intertek Testing Laboratory. Suitable for Wet Locations. ISO Class 5 (Fed Std. 209E/ Class 100). This product is Made in America and complies with the BuyAmerican Act (BAA).

DIMENSIONAL DATA

SCU22



SCU24



PERFORMANCE DATA*

*LEDs are frequently updated therefore values may change without notice.

MODEL	OUTPUT	COLOR TEMP.	LUMENS DELIVERED	EFFICACY (lm/w)	INPUT POWER (W)
SCU22	L4 = Standard	4000K	5000	125	40
	L6 = High		7000	117	60
SCU24	L4 = Standard		10000	125	80
	L6 = High		12500	125	100



New Star Lighting
2225 W Pershing Rd, Chicago, IL 60609
(773) 847-1400
www.newstarlighting.com

Specifications and dimensions are subject to change without notice. For additional options and dimensional details, please consult your New Star Lighting representative.

© 2025, New Star Lighting. All rights reserved. Unauthorized duplication or distribution is prohibited.