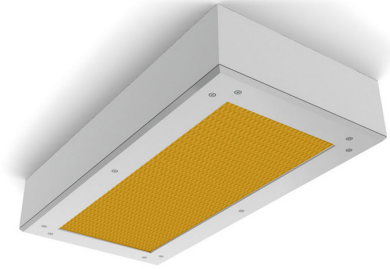


PROJECT: \_\_\_\_\_  
 TYPE: \_\_\_\_\_  
 PRODUCT: \_\_\_\_\_  
 APPROVED BY: \_\_\_\_\_

## PRODUCT FEATURES

- Intended for Light-Sensitive applications in Semiconductor Cleanrooms, Hospitals, Hi-Tech Manufacturing Laboratories, Pharmaceutical, and more
- Available in 1x4, 2x2, 2x4
- Fixture is certified to UL standards for Wet Location ISO Class 3 (Fed Std. 209E/ Class 1), Certified IP65 per IEC60598 and NSF2 Splash/Non-Food Zone ratings. Suitable for Biosafety Labs rated BSL 1 to 4. BSL Levels 3 & 4 require optional NSF P442 rating under options.
- This product is Made in America and complies with the Buy American Act (BAA) and the Build America, Buy America Act (BABAA)



SCS Amber Series



## ORDERING INFORMATION

Example: SCS14-HC/OC-L440-90C-1C-A-UN

SC	S	/					
<b>Series</b>	<b>Mounting</b> S = Surface	<b>Nominal Size*</b> 14 = 1x4 22 = 2x2 24 = 2x4  *Nominal size. Dimensional data on Page 2.	<b>Housing</b> HC = 20Ga. CRS Painted HS = 20Ga. 304 SS Brushed HP = 20Ga. 304 SS Painted HA = 16Ga. Alum. Painted	<b>Frame*</b> <b>INSET (I)* or OVERLAP (O)</b> OC = 18Ga. CRS Painted OS = 18Ga. 304 SS Brushed OP = 18Ga. 304 SS Painted OA = 16Ga. Alum. Painted IE = Extruded Alum** IP = Extruded Alum Painted** IC = 20Ga. CRS Painted* IA = 16Ga. Alum. Painted* IB = 20Ga. 304 SS Brushed* IS = 20Ga. 304 SS Painted*  *Inset frames (I) suitable for Biosafety Labs (BSL) rated 1-2 only. ** Not IP65. N/A with .187 Prismatic Poly. Lens. Inset frames (I) suitable for Biosafety Labs (BSL) rated 1-2 only.	<b>Lumen Output*</b> <b>SCS14:</b> A1W1 = 1 Amber/1 White A1W2 = 1 Amber/2 White A1W3 = 1 Amber/3 White A2W1 = 2 Amber/1 White A2W2 = 2 Amber/2 White A3W1 = 3 Amber/1 White A1 = 1 Amber LED Row A2 = 2 Amber LED Rows A3 = 3 Amber LED Rows A4 = 4 Amber LED Rows	<b>SCS22-24:</b> A2W2 = 2 Amber/2 White A2W4 = 2 Amber/4 White A2W6 = 2 Amber/6 White A4W4 = 4 Amber/4 White A4W2 = 4 Amber/2 White A6W2 = 6 Amber/2 White A2 = 2 Amber LED Row A4 = 4 Amber LED Rows A4 = 4 Amber LED Rows A8 = 8 Amber LED Row	<b>White LED Color Temp.</b> blank = No White LEDs 35 = 3500K 40 = 4000K 50 = 5000K

<b>CRI</b> 80C = 80 CRI 90C = 90 CRI	<b>Circuits</b> 1C = 1 Circuit 2C = 2 Circuits*  *Allows for Inboard/Outboard control.	<b>Lens</b> A = .125 Prismatic Acrylic B = .125 Prismatic Poly. C = 156 Prismatic Poly. D = 187 Prismatic Poly.* E = .125 White Frost Poly. G = .140 Prismatic DR Acrylic** H = .125 White Frost Acrylic  *Cannot be used with IE/IP. **Not rated for Wet Locations.	<b>Voltage</b> 12 = 120V 27 = 277V 34 = 347V UN = Universal (120V-277V)	<b>Driver</b> blank = DMI (0-10V Dimming with 1-100% range) SD2 = Step Dim. Driver * (50-100%) SD3 = Step Dim. Driver* (30-70-100%)  *Consult factory for 347V.	<b>Options</b> FZ1 = Fuse (120V) FZ2 = Fuse (277V) RF = (RIF) Radio Interference Filter TH = Torx® Head screws (with center pin) IP66 = IP66 Rated (Overlapping frame only) P442 = NSF P442 Certified (Required for BSL 1-4)*  *Requires additional backbox, see dimensional data for details.
--	--	--	---	--	--



**New Star Lighting**

2225 W Pershing Rd, Chicago, IL 60609  
 (773) 847-1400  
 www.newstarlighting.com

Specifications and dimensions are subject to change without notice. For additional options and dimensional details, please consult your New Star Lighting representative.

## SPECIFICATIONS

**HOUSING:** 20-Gauge formed cold rolled steel housing with continuous seam welds. Aluminum and stainless steel options available.

**FRAME:** Inset or overlapping doorframe available in aluminum, cold rolled steel, and stainless steel. Extruded inset door available in anodized aluminum or white painted aluminum. Frame held to housing via aircraft cable.

**LENS:** Acrylic or polycarbonate lens options - smooth side out.

**LED:** Available with Phosphor Converted (PC) 590nm Amber LEDs only or PC Amber and White LEDs. PC Amber LEDs will be installed every other row, unless otherwise specified. White color temperatures available in 3500K, 4000K and 5000K with maximum 3-step MacAdam variation allowance. Narrow Spectrum Amber and other white LED color temperatures are available. Consult factory. Minimum 80 CRI standard with optional minimum 90 CRI available. Minimum 50,000 hours with 70% lumen maintenance in a 25° ambient temperature environment, compliant with IES LM-80 testing standards.

**ELECTRICAL:** 120-277VAC 50/60Hz, constant current driver (<20% THD, >0.9 PF). Standard 0-10V Dimming with 1-100% range.

**FASTENERS:** Stainless steel Phillips flat head fasteners with captive cage nuts. Finish to match doorframe.

**FINISH:** White antimicrobial polyester powder coat finish following multi-stage iron phosphate pretreatment. Stainless steel brushed fixtures are brushed on all exposed room-side surfaces.

**GASKET:** Closed cell EPDM and closed cell silicone gaskets prevent air contaminants from entering the fixture. Gasketing seals lens to doorframe and doorframe to housing.

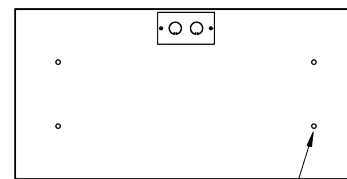
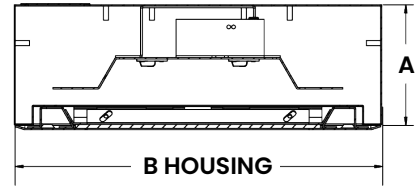
**INSTALLATION:** Surface installation. Hardware by others. Mounting for custom ceilings available, consult factory.

**WARRANTY:** 5 Year Warranty.

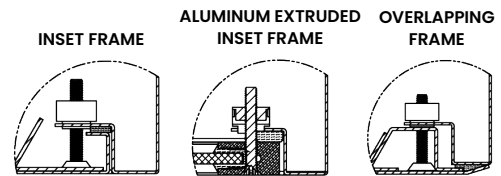
**LABEL:** Fixture is certified to UL standards for Wet Location. Meets standards for ISO3/Class 1 Cleanrooms. IP65 rating per IEC60598, and NSF2 Splash/Non-Food Zone listed. Suitable for Biosafety Labs rated BSL 1 to 4. BSL Levels 3 & 4 require optional NSF P442 rating under options. This product is Made in America and complies with the Buy American Act (BAA) and the Build America, Buy America Act (BABAA).

## DIMENSIONAL DATA

Fixture weight varies and is dependent upon chosen specifications. Consult factory for additional information. Average weight of the SCS14 is 27lb. Average weight of the SCS24 is 48lb.



SCS12: (4) Ø.31" HOLE  
 SCS14: (6) Ø.31" HOLE  
 SCS22: (4) Ø.31" HOLE  
 SCS24: (6) Ø.31" HOLE



	A	B
SCS14	3.94"	12.00" x 48.07"
SCS22	3.94"	24.00" x 24.07"
SCS24	3.94"	24.00" x 48.07"



**New Star Lighting**

2225 W Pershing Rd, Chicago, IL 60609  
 (773) 847-1400  
 www.newstarlighting.com

Specifications and dimensions are subject to change without notice. For additional options and dimensional details, please consult your New Star Lighting representative.

© 2026, New Star Lighting. All rights reserved. Unauthorized duplication or distribution is prohibited.

## PERFORMANCE DATA

MODEL	OUTPUT	LUMENS DELIVERED	EFFICACY (lm/W)	INPUT POWER (W)
SCS14	A1	2188	88	25
	A2	4375	88	50
	A3	6564	88	75
	A4	8750	88	100
SCS22	A2	2188	88	25
	A4	4375	88	50
	A6	6300	84	75
	A8	8750	88	100
SCS24	A2	4375	88	50
	A4	8750	88	100
	A6	12600	84	150
	A8	17500	88	200



**New Star Lighting**

2225 W Pershing Rd, Chicago, IL 60609  
 (773) 847-1400  
[www.newstarlighting.com](http://www.newstarlighting.com)

Specifications and dimensions are subject to change without notice. For additional options and dimensional details, please consult your New Star Lighting representative.

© 2026, New Star Lighting. All rights reserved. Unauthorized duplication or distribution is prohibited.