

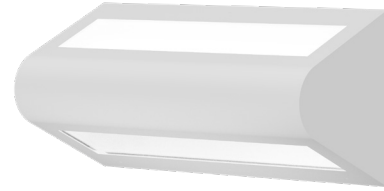
RUD™ FLUORESCENT SERIES



PROJECT: _____
 TYPE: _____
 PRODUCT: _____
 APPROVED BY: _____

PRODUCT FEATURES

- Intended for Minimum to Supermax Correctional Facilities, Detention Centers, Public Housing, Athletic Facilities, and more
- Two-aperture bullnose clamshell for wall mount available in 1ft, 2ft, and 4ft
- Fixture is certified to UL Standards by Intertek Testing Laboratories for Wet Locations
- This product is Made in America and complies with the Buy American Act, and the Build America, Buy America Act



RUD Series

ORDERING INFORMATION

Example: RUD2-B-A40-1C-A/C-UN



RUDF					
Series	Size* 1 = 1ft 2 = 2ft 4 = 4ft *Nominal Size. Dimensional Data on Page 2.	Housing B = 14Ga. CRS Painted C = 16Ga. CRS Painted D = 18Ga. CRS Painted E = 14Ga. SS Brushed F = 16Ga. SS Brushed G = 18Ga. SS Brushed H = 14Ga. SS Painted J = 16Ga. SS Painted K = 18Ga. SS Painted	Lumen Output* RUD-1: A = 1 Up / 1 Down E = 0 Up / 1 Down F = 1 Up / 0 Down RUD-2-4 A = 1 Up / 1 Down B = 1 Up / 2 Down C = 2 Up / 2 Down D = 2 Up / 1 Down E = 0 Up / 1 Down F = 1 Up / 0 Down *Subject to change. Performance Data on Page 3. **Available with RUD1.	Lamp Type RUD1: 18 = 18W Triple Gx24q-2 18Q = 18W Quad G24q-2 26 = 26W Triple Gx24q-3 26Q = 26W Quad G24q-3 32 = 32W Triple Gx24q-3 42 = 42W Triple Gx24q-4 RUD2: 17 = Linear 17W T8 14 = Linear 14W T5 24 = Linear 24W T5 HO 40 = 40 Twin 2Gx11 RUD4: 32 = Linear 32W T8 28 = Linear 28W T5 54 = Linear 54W T5 HO	Circuits 1C = 1 Circuit 2C = 2 Circuits* *Select 2C for Up/Down compartments to be independently circuited/controlled

Outer Lens 0 = No Lens A = .125 Clear Poly. B = .156 Clear Poly. 1 = .187 Clear Poly. 2 = .250 Clear Poly. 3 = .375 Clear Poly. 4 = .500 Clear Poly. 5 = .187 Clear Temp. Glass 6 = .250 Clear Temp. Glass 7 = .375 Clear Temp. Glass* 8 = .500 Clear Temp. Glass* 9 = .750 Clear Temp. Glass* *Must use with 14Ga.	Inner Lens A = .125 Prismatic Acrylic B = .125 Prismatic Poly. C = .156 Prismatic Poly. D = .187 Prismatic Poly. E = .156 Prismatic Temp. Glass F = .156 Prismatic Acrylic G = .140 DR Acrylic	Voltage 12 = 120V 27 = 277V 34 = 347V* UN = Universal (120V - 277V) *Consult factory for lamp-ballast options	Options DB = Dimming Ballast (0-10V)* E1 = Emerg. Ballast (450lm)*** E2 = Emerg. Ballast (1350lm)*** PR = Program Rapid Start AH = Allenhead Screws with center pin reject NL = Fluorescent Night Light* FZ = Fuse* WL = Wet Location UV = .005 UV Absorbing Overlay SL = Flush Button Switch (Left) SR = Flush Button Switch (Right) * Cannot use with UN voltage **Consult factory for lamp-ballast options
---	--	---	---



New Star Lighting
 2225 W Pershing Rd, Chicago, IL 60609
 (773) 847-1400
 www.newstarlighting.com

Specifications and dimensions are subject to change without notice. For additional options and dimensional details, please consult your New Star Lighting representative.

© 2025, New Star Lighting. All rights reserved. Unauthorized duplication or distribution is prohibited.

SPECIFICATIONS

HOUSING: Die-formed, seam welded, and ground smooth clamshell bullnose design in cold rolled steel or stainless steel. Incorporates a removable reflector unitized with all electrical components for easy installation and maintenance. Rounded housing shape designed to withstand physical abuse.

BACKPLATE: Die-formed with contraband drop slot and embossed mounting holes (material to match housing). Security caulking between ceiling and fixture is not required with this backplate design.

HINGE: 16-Gauge full length continuous, staked piano hinge with welded ends to prevent removal (material to match housing).

LENS: Outer and Inner lens options secured by "Z" retainers with weld studs spaced six inches apart for maximum strength.

ELECTRICAL: 120-277VAC, 50/60HZ electrical input high power factor electronic, constant current driver (<20% THD, >0.90 PF). Standard 0-10V Dimming with 10-100% range.

FASTENERS: Tamper-resistant Torx® head fasteners.

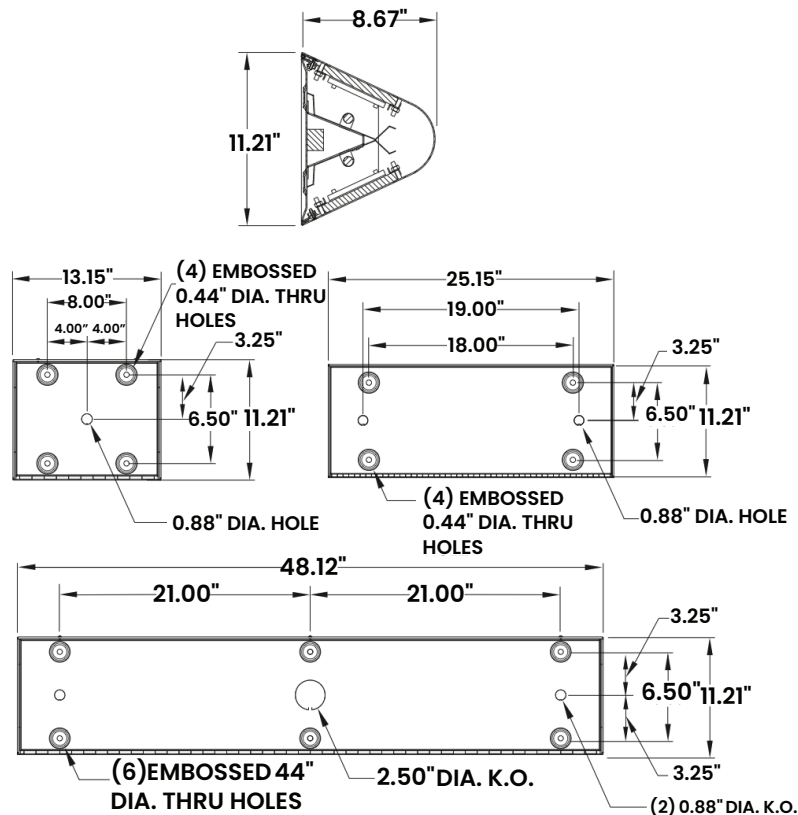
FINISH: White powder coat finish following multi-stage iron phosphate pre-treatment. Optional antimicrobial finish.

MOUNTING: Surface wall installation.

WARRANTY: New Star Promise.

LABEL: Fixture is certified to UL standards by Intertek Testing Laboratories for Wet Locations. This product is Made in America and complies with the Buy American Act (BAA).

DIMENSIONAL DATA



The RUD Fluorescent Series is covered by our New Star Promise.

Our promise means we will repair or replace any of our High Abuse or Vandal-Resistant architectural luminaires when installed according to our instructions for the life of the original installation if the fixture should fail due to physical abuse*.

*Damage caused by gunfire and chemical reactions is not covered by the New Star Promise.



New Star Lighting

2225 W Pershing Rd, Chicago, IL 60609
(773) 847-1400
www.newstarlighting.com

Specifications and dimensions are subject to change without notice. For additional options and dimensional details, please consult your New Star Lighting representative.

© 2025, New Star Lighting. All rights reserved. Unauthorized duplication or distribution is prohibited.