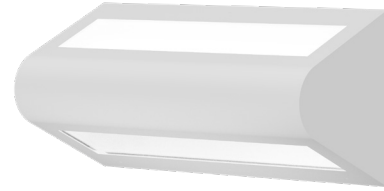


PROJECT: _____
 TYPE: _____
 PRODUCT: _____
 APPROVED BY: _____

PRODUCT FEATURES

- Intended for Minimum to Supermax Correctional Facilities, Detention Centers, Public Housing, Athletic Facilities, and more
- Two-aperture bullnose clamshell for wall mount available in 1ft, 2ft, and 4ft
- Fixture is certified to UL Standards by Intertek Testing Laboratories for Wet Locations
- This product is Made in America and complies with the Buy American Act, and the Build America, Buy America Act



RUD Series

ORDERING INFORMATION

Example: RUD2-B-LA40-1C-A/C-UN



RUD					
Series	Size* 1 = 1ft 2 = 2ft 4 = 4ft *Nominal Size. Dimensional Data on Page 2.	Housing B = 14Ga. CRS Painted C = 16Ga. CRS Painted D = 18Ga. CRS Painted E = 14Ga. SS Brushed F = 16Ga. SS Brushed G = 18Ga. SS Brushed H = 14Ga. SS Painted J = 16Ga. SS Painted K = 18Ga. SS Painted	Lumen Output* LA = 1 Up/1 Down** LB = 1 Up/2 Down LC = 2 Up/2 Down LD = 2 Up/1 Down LE = 0 Up/1 Down** LF = 1 Up/0 Down** *Subject to change. Performance Data on Page 3. **Available with RUD1.	Color Temp. 35 = 3500K 40 = 4000K 50 = 5000K	Circuits 1C = 1 Circuit 2C = 2 Circuits* *Select 2C for Up/Down compartments to be independently circuited/controlled

Outer Lens 0 = No Lens A = .125 Clear Poly. B = .156 Clear Poly. 1 = .187 Clear Poly. 2 = .250 Clear Poly. 3 = .375 Clear Poly. 5 = .187 Clear Temp. Glass 6 = .250 Clear Temp. Glass 7 = .375 Clear Temp. Glass* 8 = .500 Clear Temp. Glass* 9 = .750 Clear Temp. Glass* *Must use with 14Ga.	Inner Lens A = .125 Prismatic Acrylic B = .125 Prismatic Poly. C = .156 Prismatic Poly. D = .187 Prismatic Poly. F = .156 Prismatic Acrylic G = .140 DR Acrylic LC3 = .125 White Frosted Poly.	Voltage 12 = 120V 27 = 277V UN = Universal (120V - 277V)	Options FZ1 = Fuse (120V) FZ2 = Fuse (277V) LN = LED Night Light (3500K)* EL1 = Emerg. Bat. LED Low (10W)** EL2 = Emerg. Bat. LED Low (20W)** AH = Allen Head screws with center pin reject SR = Flush Button Switch on Right (120V) SL = Flush Button Switch on Left (120V) AM = Antimicrobial finish on exposed surfaces *3500K non-dimming Night Light with integrated switch allows light levels at 100%, 70%, 40% and 10%. Located in "Down" compartment. **Not available for RUD1. Illuminates "Down" compartment with integral test switch. If stored, batteries should be fully recharged every six months and kept between 0°C-25°C to maintain optimal battery capacity. ***Consult factory for options. Depending on options specified. Battery may need to be remote.

SPECIFICATIONS

HOUSING: Die-formed, seam welded, and ground smooth clamshell bullnose design in cold rolled steel or stainless steel. Incorporates a removable reflector unitized with all electrical components for easy installation and maintenance. Rounded housing shape designed to withstand physical abuse.

BACKPLATE: Die-formed with contraband drop slot and embossed mounting holes (material to match housing). Security caulking between ceiling and fixture is not required with this backplate design.

HINGE: 16-Gauge full length continuous, staked piano hinge with welded ends to prevent removal (material to match housing).

LENS: Outer and Inner lens options secured by "Z" retainers with weld studs spaced six inches apart for maximum strength.

LED: Available in three color temperatures 3500K, 4000K, and 5000K with maximum 3-step MacAdam variation allowance. Other color temperatures available, consult factory. Minimum 50,000 hours with 70% lumen maintenance in a 25°C ambient temperature environment, compliant with IES LM-80 testing standards.

ELECTRICAL: 120-277VAC, 50/60HZ electrical input high power factor electronic, constant current driver (<20% THD, >0.90 PF). Standard 0-10V Dimming with 10-100% range.

FASTENERS: Tamper-resistant Torx® head fasteners.

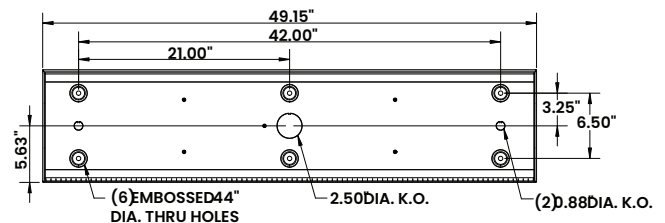
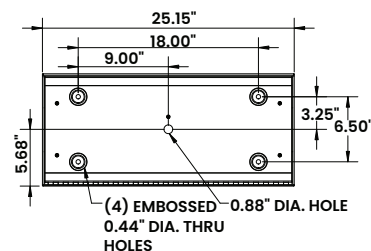
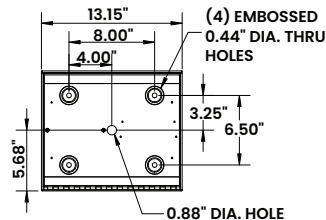
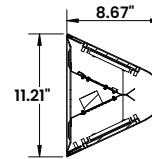
FINISH: White powder coat finish following multi-stage iron phosphate pre-treatment. Optional antimicrobial finish.

MOUNTING: Surface wall installation.

WARRANTY: New Star Promise.

LABEL: Fixture is certified to UL standards by Intertek Testing Laboratories for Wet Locations. This product is Made in America and complies with the Buy American Act (BAA).

DIMENSIONAL DATA



The RUD Series is covered by our New Star Promise.

Our promise means we will repair or replace any of our High Abuse or Vandal-Resistant architectural luminaires when installed according to our instructions for the life of the original installation if the fixture should fail due to physical abuse*.

*Damage caused by gunfire and chemical reactions is not covered by the New Star Promise.

PERFORMANCE DATA

*Data is with 80 CRI chip at 4000K. LEDs are frequently updated therefore values may change without notice.

MODEL	OUTPUT	DOWN COMPARTMENT DELIVERED LUMENS	EFFICACY (lm/W)	INPUT POWER (W)
RUD1	LA = 1 Up/1 Down	4000	110	25
	LE = 0 Up/1 Down	2000	110	12.5
	LF = 1 Up/0 Down	2000	110	12.5
RUD2	LA = 1 Up/1 Down	2750	110	50
	LB = 1 Up/2 Down	4125	110	75
	LC = 2 Up/2 Down	5500	110	100
	LD = 2 Up/1 Down	4125	110	75
	LE = 0 Up/1 Down	1375	110	25
	LF = 1 Up/0 Down	1375	110	25
RUD4	LA = 1 Up/1 Down	5500	110	50
	LB = 1 Up/2 Down	8250	110	75
	LC = 2 Up/2 Down	11000	110	100
	LD = 2 Up/1 Down	8250	110	75
	LE = 0 Up/1 Down	2750	110	25
	LF = 1 Up/0 Down	2750	110	25



New Star Lighting

2225 W Pershing Rd, Chicago, IL 60609
(773) 847-1400
www.newstarlighting.com

Specifications and dimensions are subject to change without notice. For additional options and dimensional details, please consult your New Star Lighting representative.

© 2025, New Star Lighting. All rights reserved. Unauthorized duplication or distribution is prohibited.