

PROJECT: _____
 TYPE: _____
 PRODUCT: _____
 APPROVED BY: _____

PRODUCT FEATURES

- Intended for MRI and Hybrid Surgical Suite applications
- Extensive library of images to choose from
- Non-ferrous construction and remote power supplies provide safe operating conditions for MRI machines, medical imaging equipment, and other magnetically sensitive apparatus
- Certified to UL standards by Intertek Testing Laboratory and NSF standards. Compliant with MIL-STD 461G for radiated and conducted emissions
- This product is Made in America and complies with Buy American Act requirements



PCOGMRI



ORDERING INFORMATION

Example: PCOGMRI-22-TB15-1-XXX-UN-40

PCOGMRI						40
Series	Nominal Size 22 = 2' x 2' 44 = 4' x 4'	Mounting/ Suspension TB15 = t-bar 15/16" TB24 = t-bar 1 1/2"	Ceiling Configuration X Y Z X = Number of Overlapping Grid fixtures per Mural Y = Horizontal length of Mural (Feet) Z = Vertical length of Mural (Feet) * Configuration Example on Page 2. Custom configurations and shapes available, consult factory. Images may need to be edited based on layout.	Image Blank = .125" Frosted Polycarbonate Please CLICK HERE to go to image selection guide(insert code in place) +PCC(#) = custom image* *Provide your own image (must be 150dpi at 100% image size).	Voltage 12 = 120V 27 = 277V UN = Universal (120-277V)	Color Temp. 40 = 4000K

REMOTE POWER SUPPLY ORDERING INFORMATION

PositiveCare MRI fixtures supplied with remote LED Driver (must be remote mount outside of Imaging Room). One Driver inside one Box to power one fixture (maximum). Consult factory for additional options. MRI room EMI filter required (supplied by others). Note, each Power Supply requires individual Filter. Consult factory for additional Power Supply configurations.

PCOGMRI		PS-1/1-P	
Series	SIZE 22 = 2' x 2' 44 = 4' x 4'		Options DM = 0-10V dimming with 1-100% range



New Star Lighting

2225 W Pershing Rd, Chicago, IL 60609
 (773) 847-1400
www.newstarlighting.com

Specifications and dimensions are subject to change without notice. For additional options and dimensional details, please consult your New Star Lighting representative.

© 2025, New Star Lighting. All rights reserved. Unauthorized duplication or distribution is prohibited.

SPECIFICATIONS

CONSTRUCTION: 18-Gauge aluminum 0.040" housing.

LENS: 0.236" PMMA lens with image.

REFLECTORS: Hi-reflectance powder coat aluminum.

LUMINAIRE SUPPORT: Aluminum hold-down clips

FINISH: Powder coated paint following multi-stage iron phosphate pretreatment on all exposed room-side surfaces.

LED: LED modules are available in 4000K with maximum 3-step MacAdam variation allowance. Minimum 50,000h with 85% of lumen maintenance in 25°C ambient temperature, in compliance with IES LM-80 testing measurements. Standard 0-10V dimming driver with 1-100% range.

POWER SUPPLY: LED driver included – must be remote mount. Must order Power Supply separately, Page 3. MRI room EMI filter required, supplied by others. Input Voltage: AC120V-277V.

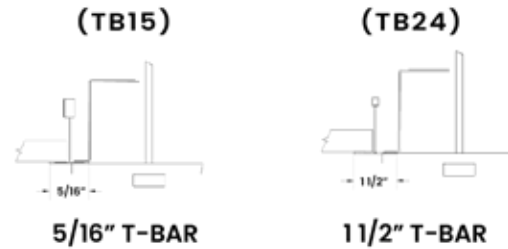
LABEL: Fixture is certified to UL standards by Intertek Testing Laboratory and NSF standards. Compliant with MIL-STD 461G for radiated and conducted emissions.

WARRANTY: New Star Lighting will warrant defective LEDs, boards, EMI filters, and drivers for 5 years from date of purchase. Warranty is valid only if luminaire is installed and used according to specifications and installation instructions.

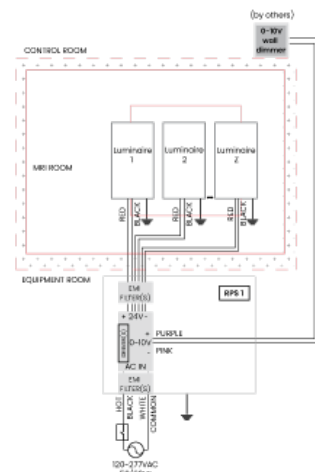
If defective, New Star will send replacement boards, filters or drivers at no cost along with detailed replacement instructions and instructions on how to return defective components to New Star. Please fill out Specifier Acknowledgment and affirm that the MRI Installation Registration checklist will be provided to the installer to be completed, signed, and returned to your respective New Star Lighting representative.

For warranty purposes, please carefully read all supporting instructions, and make sure to follow them for the installation. This New Star Lighting warranty will not go into effect until receipt of the signed Installation Registration Checklist (see last page).

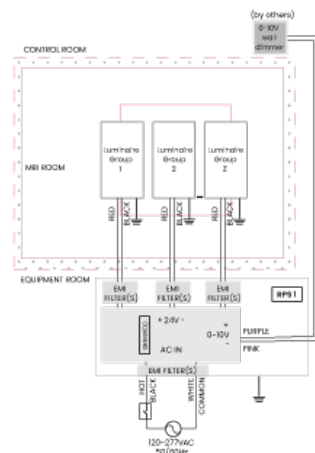
T-BAR STYLE MOUNTING



EXAMPLE WIRING DIAGRAMS



Single connection installation



Multiple connection installation



New Star Lighting

2225 W Pershing Rd, Chicago, IL 60609
(773) 847-1400
www.newstarlighting.com

Specifications and dimensions are subject to change without notice. For additional options and dimensional details, please consult your New Star Lighting representative.

© 2025, New Star Lighting. All rights reserved. Unauthorized duplication or distribution is prohibited.

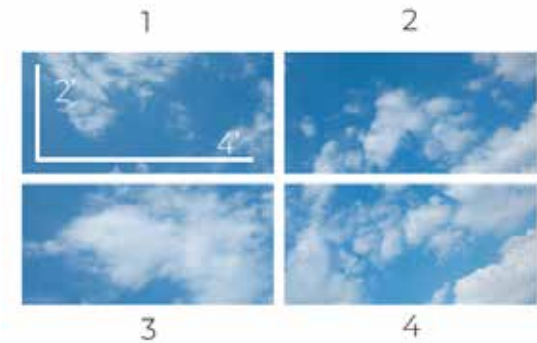
CONFIGURATION EXAMPLE

Order quantity based on number of murals, not Overlapping Grid fixtures.

Example: Qty 1: PCOGMRI24-M484-RT-UN-57 = 1 Mural consisting of 4 (2x4) Overlapping Grid fixtures. Two Overlapping Grid

CONFIGURATION EXAMPLE #1
4 8 4

X Y Z
X = Number of Overlapping Grid fixtures per Mural
= 4 (2x4 Overlapping Grid)
Y = Horizontal length of Mural (Feet) = 8ft
Z = Vertical length of Mural (Feet) = 4ft

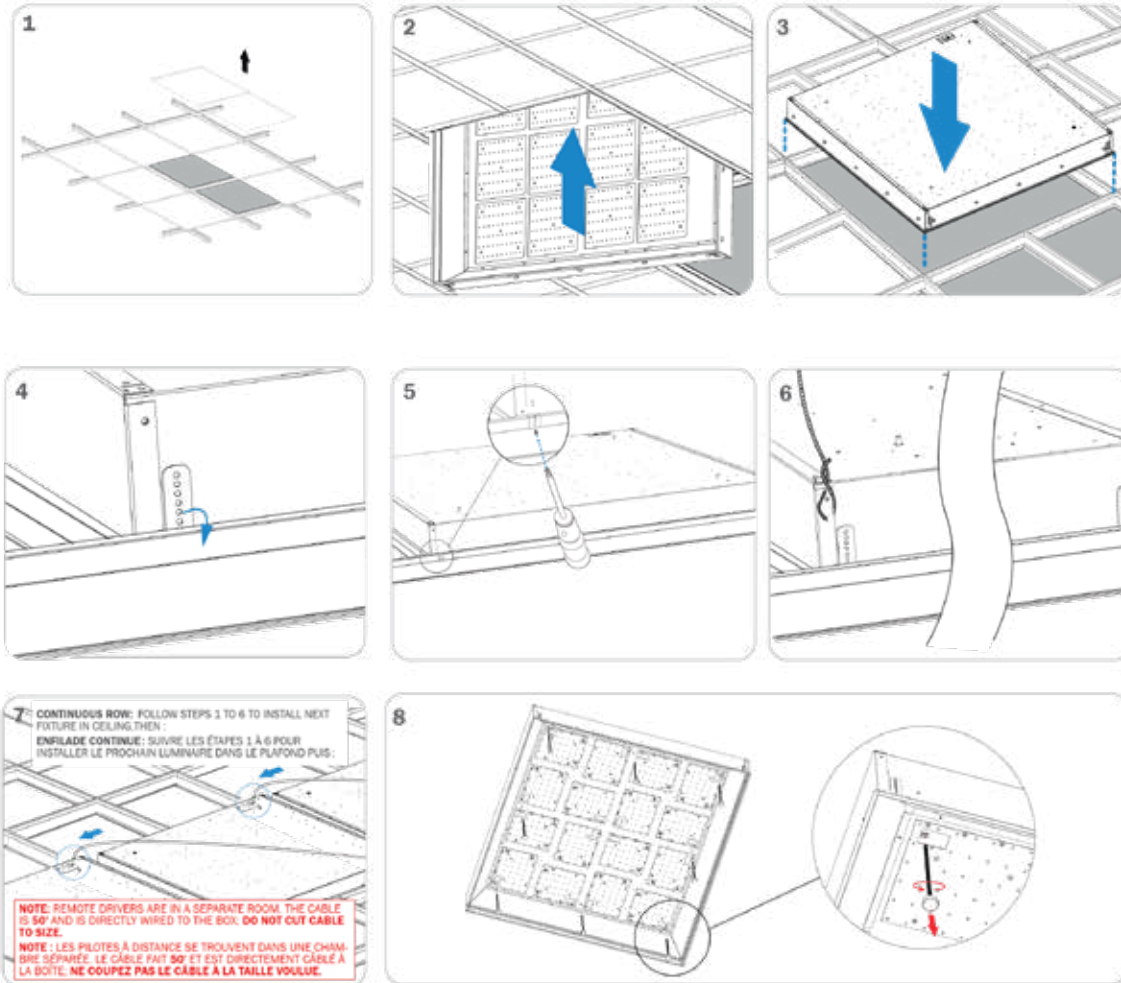


CONFIGURATION EXAMPLE #2
4 4 8

X Y Z
XX = Number of Overlapping Grid fixtures per Mural
= 4 (2x4 Overlapping Grid)
Y = Horizontal length of Mural (Feet) = 4ft
Z = Vertical length of Mural (Feet) = 8ft



INSTALLATION INSTRUCTIONS



New Star Lighting

2225 W Pershing Rd, Chicago, IL 60609
(773) 847-1400
www.newstarlighting.com

Specifications and dimensions are subject to change without notice. For additional options and dimensional details, please consult your New Star Lighting representative.

© 2025, New Star Lighting. All rights reserved. Unauthorized duplication or distribution is prohibited.

IMPORTANT SAFETY MEASURES

Power must be supplied by grounded New Star Remote Power Supply to ensure adequate EMI filtering. Remote Power Supply system must be ordered separately, and installed according to provided instructions.

- This must be installed in accordance with the applicable installation code by a person familiar with the construction and operation of the product and the hazards involved in a MRI environment
- Disconnect power to all circuits before wiring fixture
- Install in accordance with all national, state, and local codes
- Remote Power Supply MUST be grounded
- Failure to install unit on a mechanically sound surface may result in personal injury, physical damage, or potential fire hazard
- Use installation procedures appropriate to a MRI environment and sensitive electronic equipment
- Read all fixture marketing and labels to ensure correct installation of the luminaire
- Supplemental instructions may be located on the luminaire, in addition to the instruction sheet provided by New Star, regarding orientation or mounting restrictions



New Star Lighting

2225 W Pershing Rd, Chicago, IL 60609
(773) 847-1400
www.newstarlighting.com

Specifications and dimensions are subject to change without notice. For additional options and dimensional details, please consult your New Star Lighting representative.

© 2025, New Star Lighting. All rights reserved. Unauthorized duplication or distribution is prohibited.

SPECIFIER ACKNOWLEDGMENT

Contractor acknowledges and understands the requirements of installing New Star Lighting products prior to the installation.

Please sign below before New Star Lighting releases your order.

Signature: _____

Date: _____

Print Name: _____

Project Name: _____

----- See next page for MRI installation registration checklist -----

MRI INSTALLATION REGISTRATION CHECKLIST

Customer acknowledges that attached Installation Registration Checklist will be provided to the installer to sign and return to New Star Lighting after the installation is complete. **Please fill out this form and return to your New Star Lighting Representative.**

The warranty for your MRI installation will not go into effect until receipt of this signed registration checklist.

I certify that the lighting installation for the listed MRI suite is completed per the provided installation instructions and to the best of my abilities.

Please check off to denote status:

Installation instruction sheet for Remote Power Supply is read and followed.

Remote Power supply is located outside the shielded MRI exam room and grounded.

All dimming signals wiring is located outside the shielded MRI room.

Lighting system fully tested (including dimming operation if applicable) while MRI machine is in idle mode.

Lighting system fully tested (including dimming operation, if applicable) while MRI machine is in scan operation mode with the magnets fully activated.

If any of those steps cannot be completed or you need technical assistance, please contact your New Star Lighting Representative.

Electrical Contractor

Installation site

Name: _____

Project Name: _____

Phone: _____

City / State (Province): _____

Installation date: _____

Send the form to your New Star Lighting Representative.

New Star Lighting Representative: _____

Date: _____



New Star Lighting

2225 W Pershing Rd, Chicago, IL 60609
(773) 847-1400
www.newstarlighting.com

Specifications and dimensions are subject to change without notice. For additional options and dimensional details, please consult your New Star Lighting representative.

© 2025, New Star Lighting. All rights reserved. Unauthorized duplication or distribution is prohibited.