

PROJECT: _____

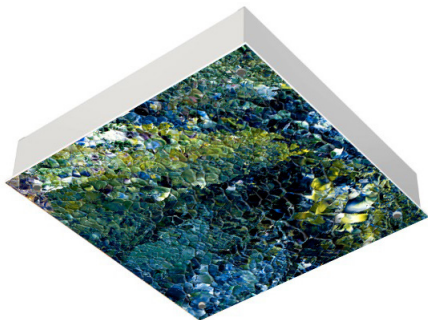
TYPE: _____

PRODUCT: _____

APPROVED BY: _____

PRODUCT FEATURES

- Intended for MRI healthcare applications
- Extensive library of images to choose from
- Non-ferrous construction and remote power supplies provide safe operating conditions for MRI machines, medical imaging equipment, and other magnetically sensitive apparatus
- Certified to UL standards by Intertek Testing Laboratory and NSF standards. Compliant with MIL-STD 461G for radiated and conducted emissions
- This product is Made in America and complies with Buy American Act requirements



PCGMRI

ORDERING INFORMATION

Example: PCMRI-22-TB15-1-XXX-UN-40



PCGMRI						40
Series	Nominal Size 22 = 2' x 2' 44 = 4' x 4'	Mounting/Suspension TB15 = t-bar 15/16" TB24 = t-bar 1 1/2"	Ceiling Configuration 1 = One fixture 2 = Two fixtures 3 = Three fixtures SC(#) = Specify configuration - (#) fixtures* *Provide configuration drawing. Consult factory.	Image* See Page 4-6.	Voltage 12 = 120V 27 = 277V UN = Universal	Color Temp. 40 = 4000K

POWER REMOTE SUPPLY ORDERING INFORMATION

PostiveCare MRI fixtures supplied with remote LED Driver (must be remote mount outside of Imaging Room). One Driver inside one Box to power one fixture (maximum). Consult factory for additional options. MRI room EMI filter required (supplied by others). Note, each Power Supply requires individual Filter. Consult factory for additional Power Supply configurations.

PCGMRI		PS-1/1-P	
Series	SIZE 22 = 2' x 2' 44 = 4' x 4'		Options DM = 0-10V dimming with 1-100% range

SPECIFICATIONS

CONSTRUCTION: 18-Gauge aluminum 0.040" housing.

LENS: 0.236" PMMA lens with image.

REFLECTORS: Hi-reflectance powder coat aluminum.

LUMINAIRE SUPPORT: Aluminum hold-down clips

FINISH: Powder coated paint following multi-stage iron phosphate pretreatment on all exposed room-side surfaces.

LED: LED modules are available in 4000K with maximum 3-step MacAdam variation allowance. Minimum 50,000h with 85% of lumen maintenance in 25°C ambient temperature, in compliance with IES LM-80 testing measurements. Standard 0-10V dimming driver with 1-100% range.

POWER SUPPLY: LED driver included – must be remote mount. Must order Power Supply separately, Page 3. MRI room EMI filter required, supplied by others. Input Voltage: AC120V-277V.

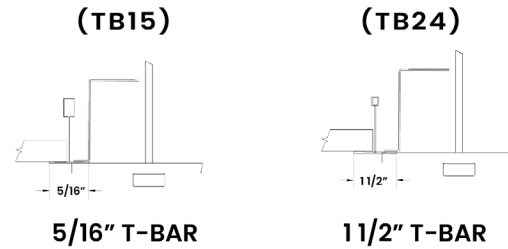
LABEL: Fixture is certified to UL standards by Intertek Testing Laboratory and NSF standards. Compliant with MIL-STD 461G for radiated and conducted emissions.

WARRANTY: New Star Lighting will warrant defective LEDs, boards, EMI filters, and drivers for 5 years from date of purchase. Warranty is valid only if luminaire is installed and used according to specifications and installation instructions.

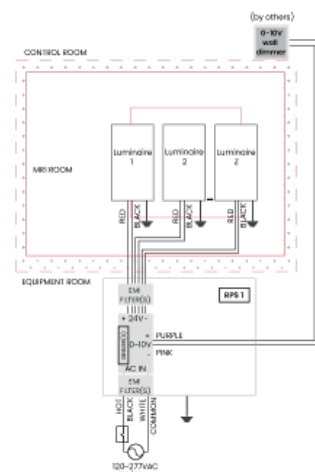
If defective, New Star will send replacement boards, filters or drivers at no cost along with detailed replacement instructions and instructions on how to return defective components to New Star. Please fill out Specifier Acknowledgment and affirm that the MRI Installation Registration checklist will be provided to the installer to be completed, signed, and returned to your respective New Star Lighting representative.

For warranty purposes, please carefully read all supporting instructions, and make sure to follow them for the installation. This New Star Lighting warranty will not go into effect until receipt of the signed Installation Registration Checklist (see last page).

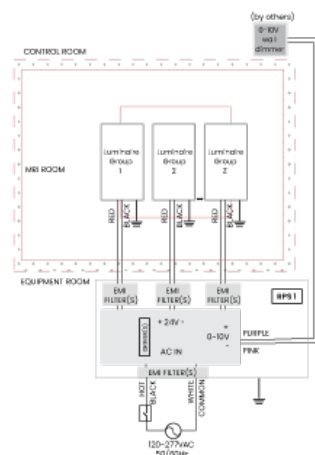
T-BAR STYLE MOUNTING



EXAMPLE WIRING DIAGRAMS



Single connection installation



Multiple connection installation



New Star Lighting

2225 W Pershing Rd, Chicago, IL 60609
(773) 847-1400
www.newstarlighting.com

Specifications and dimensions are subject to change without notice. For additional options and dimensional details, please consult your New Star Lighting representative.

© 2024, New Star Lighting. All rights reserved. Unauthorized duplication or distribution is prohibited.

CONFIGURATION

Standard configurations shown. For custom layout please provide configuration drawing, then consult factory.



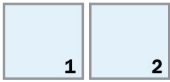
16 Sixteen figures custom configuration shown



1 One fixture



3 Three fixtures



2 Two fixtures

EASY IMAGE SPECIFICATION STEPS

- Select the luminaire.
- Select your desired configuration.
- Select the image from our [portfolio](#).
- Send us your layout and we will prepare a proof for your final approval.

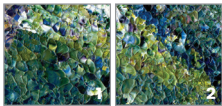
1. Luminaire



PCGMRI-44

Select the luminaire.

2. Configuration



2 two fixtures

PCGMRI-44-2

Select your desired configuration.

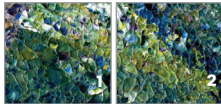
3. Image



PCGMRI-44-2-TQ100

Select image from our portfolio.

4. Proof

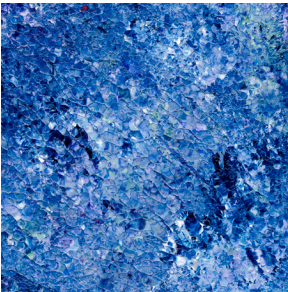


Send us your layout and we will prepare a proof for your final approval.

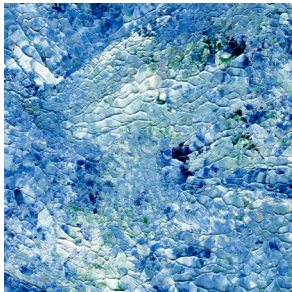


IMAGE OPTIONS – ADDITIONAL IMAGES AVAILABLE

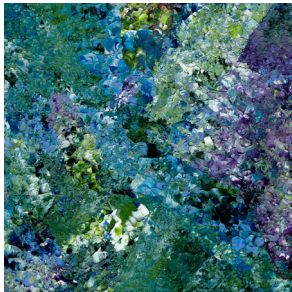
THE VARA KAMIN COLLECTION



MOON DROPS
VMD



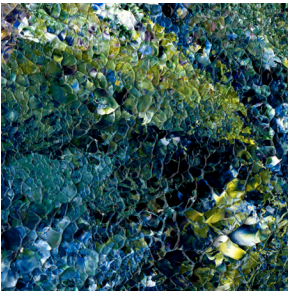
BRIDGE OF LIGHT
VBL



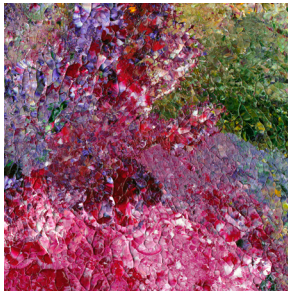
SACRED PASSAGES
VSP



INFINITE MOMENTS
VIM

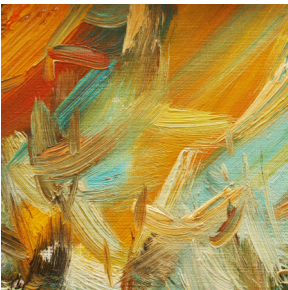


SEA GARDEN
VSG



TOUCHING PETALS
VTP

THE ABSTRACT COLLECTION



PC10001



PC10002



PC10003



PC10004

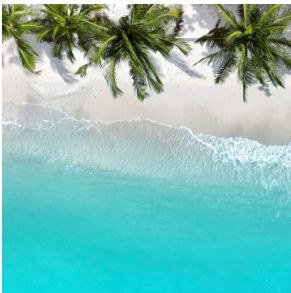
THE OCEAN COLLECTION



PC20001



PC20002

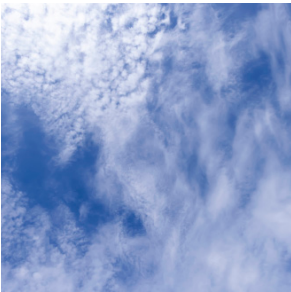


PC20003

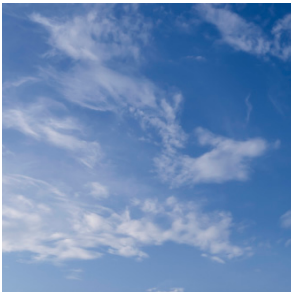
THE CLOUD COLLECTION



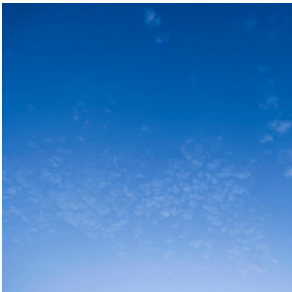
PC30034



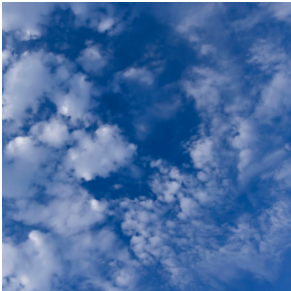
PC30005



PC30005



PC30013



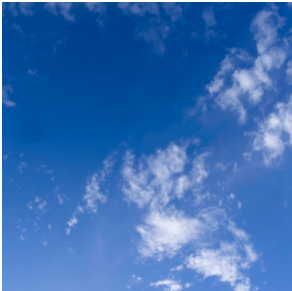
PC30015



PC30021



PC30028



PC30030

THE LANDSCAPE COLLECTION



PC50003



PC50008



PC50012

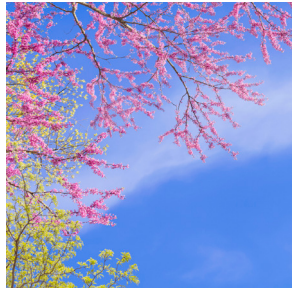


PC50004

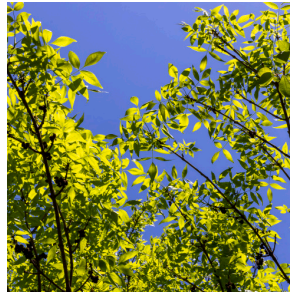
THE OCEAN COLLECTION



PC40005



PC40008

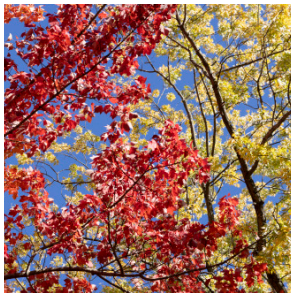


PC40013

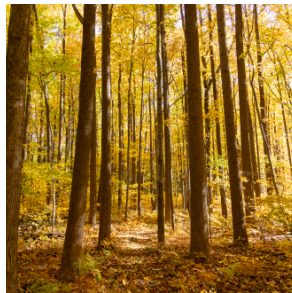


PC40029

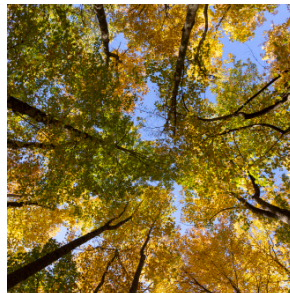
THE FALL COLLECTION



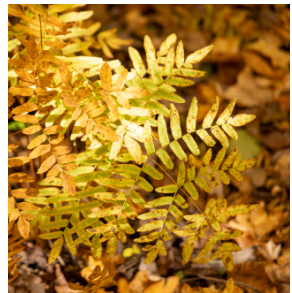
PC60001



PC60002



PC60003



PC60004

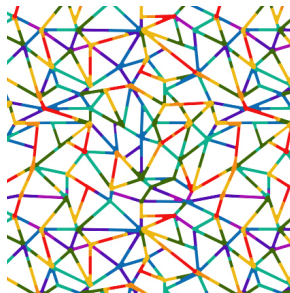
THE PEDIATRICS COLLECTION



PC0001



PC0011



PC0015



PC0019

Images are representational of our library- additional options available
Consult factory for more options.



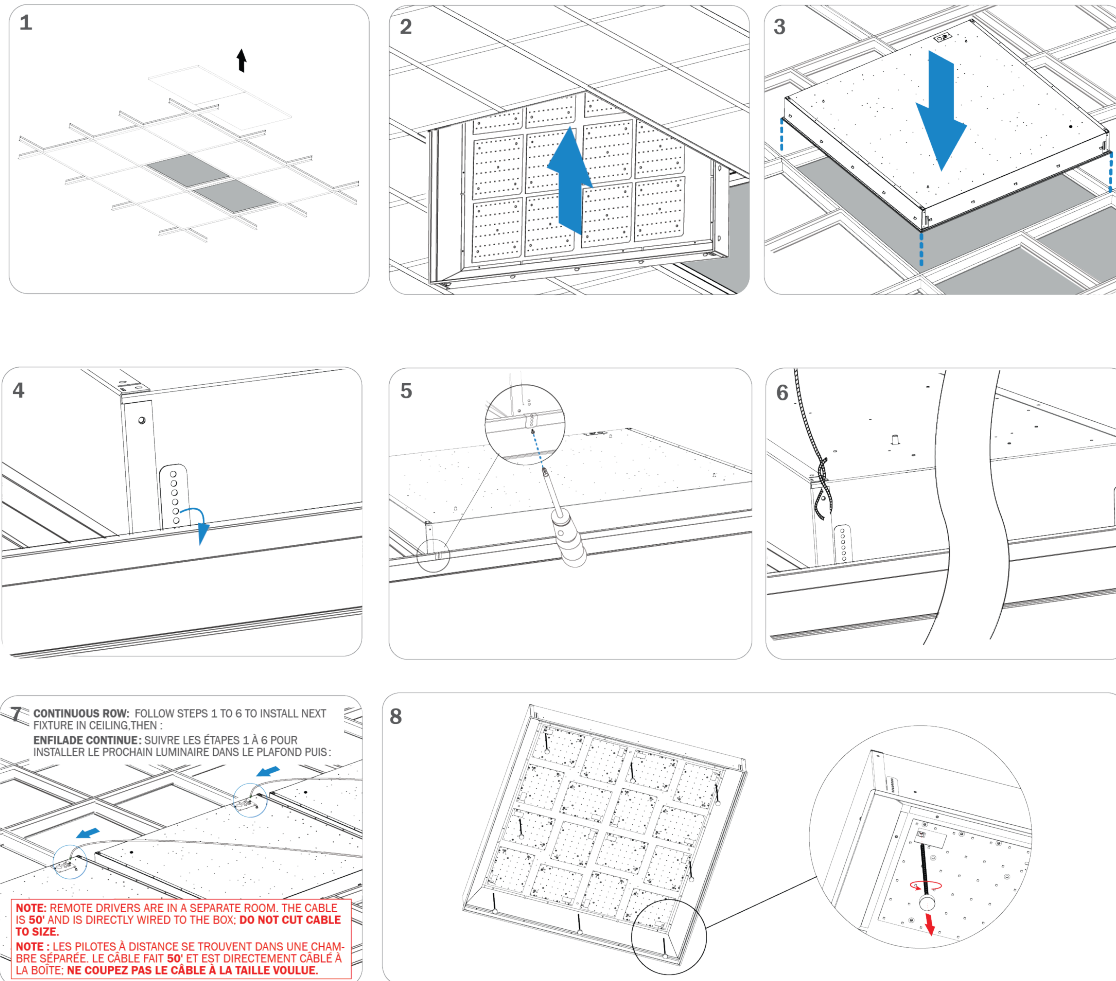
New Star Lighting

2225 W Pershing Rd, Chicago, IL 60609
 (773) 847-1400
www.newstarlighting.com

Specifications and dimensions are subject to change without notice. For additional options and dimensional details, please consult your New Star Lighting representative.

© 2024, New Star Lighting. All rights reserved. Unauthorized duplication or distribution is prohibited.

INSTALLATION INSTRUCTIONS



New Star Lighting

2225 W Pershing Rd, Chicago, IL 60609
(773) 847-1400
www.newstarlighting.com

Specifications and dimensions are subject to change without notice. For additional options and dimensional details, please consult your New Star Lighting representative.

© 2024, New Star Lighting. All rights reserved. Unauthorized duplication or distribution is prohibited.

IMPORTANT SAFETY MEASURES

Power must be supplied by grounded New Star Remote Power Supply to ensure adequate EMI filtering. Remote Power Supply system must be ordered separately, and installed according to provided instructions.

- This must be installed in accordance with the applicable installation code by a person familiar with the construction and operation of the product and the hazards involved in a MRI environment
- Disconnect power to all circuits before wiring fixture
- Install in accordance with all national, state, and local codes
- Remote Power Supply MUST be grounded
- Failure to install unit on a mechanically sound surface may result in personal injury, physical damage, or potential fire hazard
- Use installation procedures appropriate to a MRI environment and sensitive electronic equipment
- Read all fixture marketing and labels to ensure correct installation of the luminaire
- Supplemental instructions may be located on the luminaire, in addition to the instruction sheet provided by New Star, regarding orientation or mounting restrictions



New Star Lighting

2225 W Pershing Rd, Chicago, IL 60609
(773) 847-1400
www.newstarlighting.com

Specifications and dimensions are subject to change without notice. For additional options and dimensional details, please consult your New Star Lighting representative.

© 2024, New Star Lighting. All rights reserved. Unauthorized duplication or distribution is prohibited.

SPECIFIER ACKNOWLEDGMENT

Contractor acknowledges and understands the requirements of installing New Star Lighting products prior to the installation.

Please sign below before New Star Lighting releases your order.

Signature: _____

Date: _____

Print Name: _____

Project Name: _____

----- See next page for MRI installation registration checklist -----

MRI INSTALLATION REGISTRATION CHECKLIST

Customer acknowledges that attached Installation Registration Checklist will be provided to the installer to sign and return to New Star Lighting after the installation is complete. **Please fill out this form and return to your New Star Lighting Representative.**

The warranty for your MRI installation will not go into effect until receipt of this signed registration checklist.

I certify that the lighting installation for the listed MRI suite is completed per the provided installation instructions and to the best of my abilities.

Please check off to denote status:

Installation instruction sheet for Remote Power Supply is read and followed.

Remote Power supply is located outside the shielded MRI exam room and grounded.

All dimming signals wiring is located outside the shielded MRI room.

Lighting system fully tested (including dimming operation if applicable) while MRI machine is in idle mode.

Lighting system fully tested (including dimming operation, if applicable) while MRI machine is in scan operation mode with the magnets fully activated.

If any of those steps cannot be completed or you need technical assistance, please contact your New Star Lighting Representative.

Electrical Contractor

Installation site

Name: _____

Project Name: _____

Phone: _____

City / State (Province): _____

Installation date: _____

Send the form to your New Star Lighting Representative.

New Star Lighting Representative: _____

Date: _____



New Star Lighting

2225 W Pershing Rd, Chicago, IL 60609
(773) 847-1400
www.newstarlighting.com

Specifications and dimensions are subject to change without notice. For additional options and dimensional details, please consult your New Star Lighting representative.

© 2024, New Star Lighting. All rights reserved. Unauthorized duplication or distribution is prohibited.