

PROJECT: _____
 TYPE: _____
 PRODUCT: _____
 APPROVED BY: _____

PRODUCT FEATURES

- Intended for MRI and Hybrid Surgical Suite applications
- Extensive library of images to choose from
- Non-ferrous construction and remote power supplies provide safe operating conditions for MRI machines, medical imaging equipment, and other magnetically sensitive apparatus
- Certified to UL standards by Intertek Testing Laboratory and NSF standards. Compliant with MIL-STD 461G for radiated and conducted emissions
- This product is Made in America and complies with Buy American Act (BAA) requirements



PCG-MRI



ORDERING INFORMATION

Example: PCG-MRI-22-TB15-1-XXX-40-UN

PCG	MRI			
Series	MRI	Nominal Size 22 = 2' x 2' 24 = 2' x 4' 44 = 4' x 4'	Mounting/Suspension TB15 = t-bar 15/16" TB24 = t-bar 1 1/2"	Ceiling Configuration X Y Z X = Number of Overlapping Grid fixtures per Mural Y = Horizontal length of Mural (Feet) Z = Vertical length of Mural (Feet) * Configuration Example on Page 2. Custom configurations and shapes available, consult factory. Images may need to be edited based on layout.
			40	
Image blank = .125" Frosted Polycarbonate Please CLICK HERE to go to image selection guide (insert code in place) +PCC(#) = custom image* *Provide your own image (must be 150dpi at 100% image size).			Color Temp. 40 = 4000K 50 = 5000K	Voltage 12 = 120V 27 = 277V UN = Universal (120-277V)

REMOTE POWER SUPPLY ORDERING INFORMATION

PostiveCare MRI fixtures supplied with remote LED Driver (must be remote mount outside of Imaging Room). One Driver inside one Box to power one fixture (maximum). Consult factory for additional options. MRI room EMI filter required (supplied by others). Note, each Power Supply requires individual Filter. Consult factory for additional Power Supply configurations.

PCG	MRI		PS-1/1-P	
Series	MRI	SIZE 22 = 2' x 2' 44 = 4' x 4'		Options DM = 0-10V dimming with 1-100% range



New Star Lighting

2225 W Pershing Rd, Chicago, IL 60609
 (773) 847-1400
www.newstarlighting.com

Specifications and dimensions are subject to change without notice. For additional options and dimensional details, please consult your New Star Lighting representative.

SPECIFICATIONS

CONSTRUCTION: 18-Gauge aluminum 0.040" housing.

LENS: 0.236" PMMA lens with [image](#).

REFLECTORS: Hi-reflectance powder coat aluminum.

LUMINAIRE SUPPORT: Aluminum hold-down clips

FINISH: White antimicrobial polyester powder coat following multi-stage iron phosphate pretreatment on all exposed room-side surfaces.

LED: LED modules are available in 5000K with maximum 3-step MacAdam variation allowance. Minimum 50,000h with 85% of lumen maintenance in 25°C ambient temperature environment, in compliance with IES LM-80 testing measurements. Standard 0-10V dimming driver with 1-100% range.

POWER SUPPLY: LED driver included – must be remote mount. Must order Power Supply separately, Page 3. MRI room EMI filter required, supplied by others. Input Voltage: AC120V-277V.

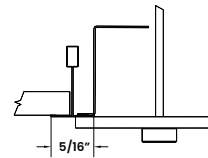
LABEL: Fixture is certified to UL standards by Intertek Testing Laboratory and NSF standards. Compliant with MIL-STD 461G for radiated and conducted emissions.

WARRANTY: New Star Lighting will warrant defective LEDs, boards, EMI filters, and drivers for 5 years from date of purchase. Warranty is valid only if luminaire is installed and used according to specifications and installation instructions.

If defective, New Star will send replacement boards, filters or drivers at no cost along with detailed replacement instructions and instructions on how to return defective components to New Star.

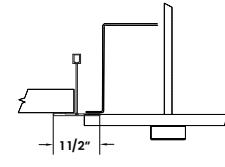
T-BAR STYLE MOUNTING

(TB15)



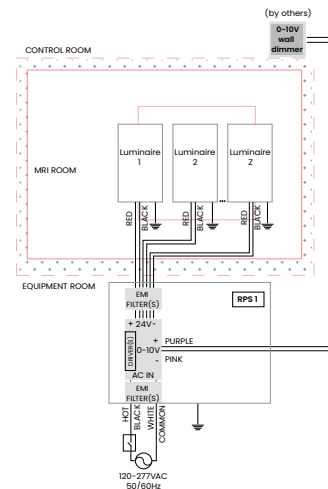
5/16" T-BAR

(TB24)

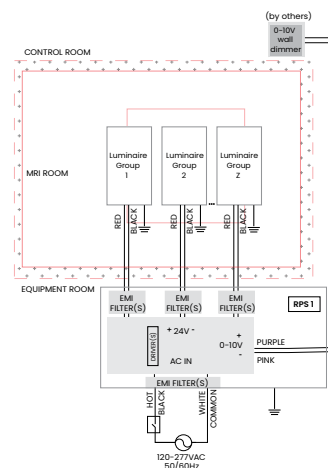


1 1/2" T-BAR

EXAMPLE WIRING DIAGRAMS



Single connection installation



Multiple connection installation



New Star Lighting

2225 W Pershing Rd, Chicago, IL 60609
(773) 847-1400
www.newstarlighting.com

Specifications and dimensions are subject to change without notice. For additional options and dimensional details, please consult your New Star Lighting representative.

© 2026, New Star Lighting. All rights reserved. Unauthorized duplication or distribution is prohibited.

CONFIGURATION EXAMPLE

Order quantity based on number of murals, not Overlapping Grid fixtures.

Example: Qty 1: PCG-MRI24-M484-RT-UN-57 = 1 Mural consisting of 4 (2x4) Overlapping Grid fixtures. Two Overlapping Grid fixtures across (8') and two Overlapping Grid fixtures down (4').

CONFIGURATION EXAMPLE #1		
4	8	4

X Y Z
X = Number of Overlapping Grid fixtures per Mural = 4 (2x4 Overlapping Grid)
Y = Horizontal length of Mural (Feet) = 8ft
Z = Vertical length of Mural (Feet) = 4ft

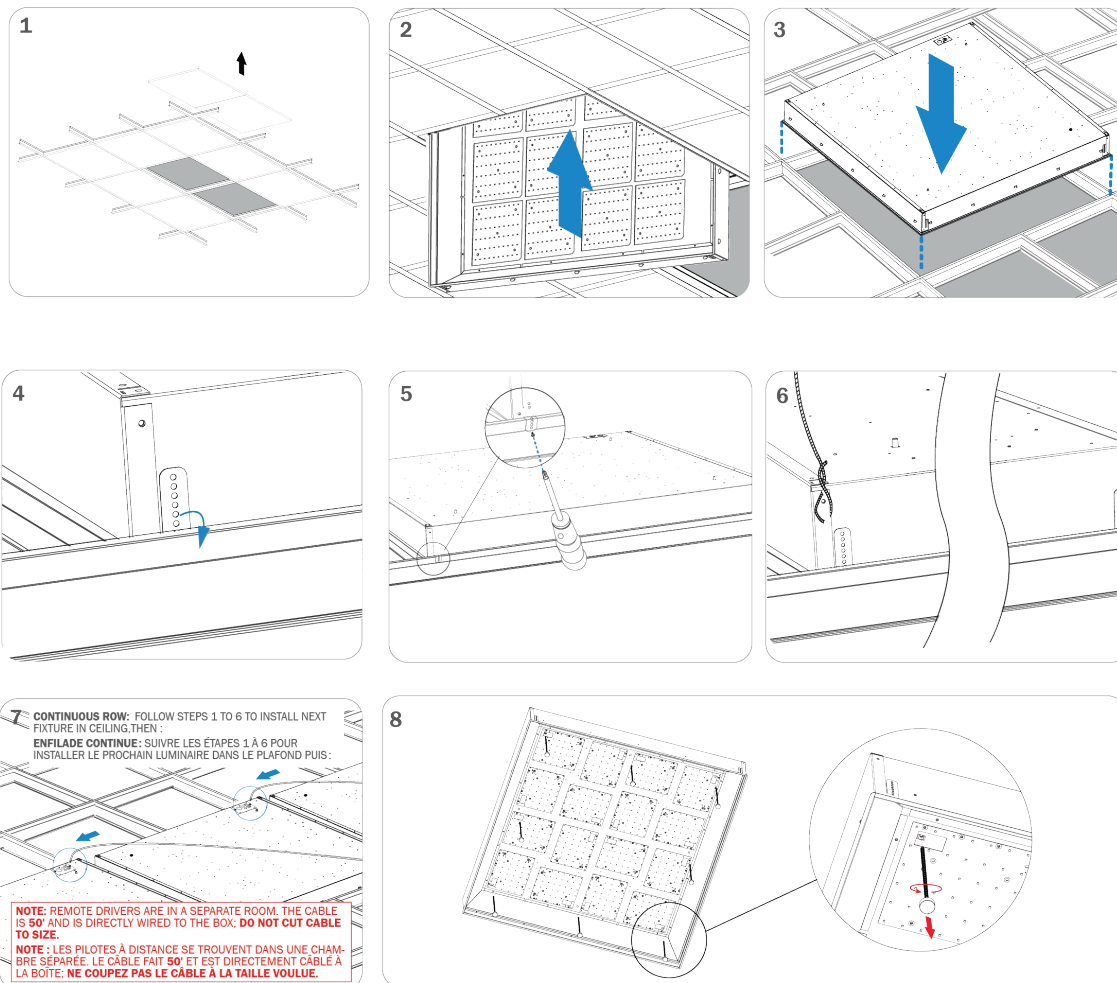


CONFIGURATION EXAMPLE #2		
4	4	8

X Y Z
X = Number of Overlapping Grid fixtures per Mural = 4 (2x4 Overlapping Grid)
Y = Horizontal length of Mural (Feet) = 4ft
Z = Vertical length of Mural (Feet) = 8ft



INSTALLATION INSTRUCTIONS



IMPORTANT SAFETY MEASURES

Power must be supplied by grounded New Star Remote Power Supply to ensure adequate EMI filtering. Remote Power Supply system must be ordered separately, and installed according to provided instructions.

- This must be installed in accordance with the applicable installation code by a person familiar with the construction and operation of the product and the hazards involved in a MRI environment
- Disconnect power to all circuits before wiring fixture
- Install in accordance with all national, state, and local codes
- Remote Power Supply **MUST** be grounded
- Failure to install unit on a mechanically sound surface may result in personal injury, physical damage, or potential fire hazard
- Use installation procedures appropriate to a MRI environment and sensitive electronic equipment
- Read all fixture marketing and labels to ensure correct installation of the luminaire
- Supplemental instructions may be located on the luminaire, in addition to the instruction sheet provided by New Star, regarding orientation or mounting restrictions



New Star Lighting

2225 W Pershing Rd, Chicago, IL 60609
 (773) 847-1400
www.newstarlighting.com

Specifications and dimensions are subject to change without notice. For additional options and dimensional details, please consult your New Star Lighting representative.

© 2026, New Star Lighting. All rights reserved. Unauthorized duplication or distribution is prohibited.