

PROJECT: _____
 TYPE: _____
 PRODUCT: _____
 APPROVED BY: _____

PRODUCT FEATURES

- Non-ferrous construction and remote power supplies provide safe operating conditions for MRI machines, medical imaging equipment, and other magnetically sensitive apparatus
- Non-ferrous construction, available in 1ft, 2ft, and 4ft
- Surface Wall Mount Installation
- This product was Made in America and complies with the Buy American Act (BAA) and the Build America, Buy America Act (BABAA)



LAM-MRI Series



ORDERING INFORMATION

Example: LAM1-MRI-AL-L230-1C-LC3-BK-90C-UN-DMI

LAM		MRI	AL		
Series	Size* 1 = 1ft 2 = 2ft 4 = 4ft *Nominal Size. Dimensional Data on Page 2.	MRI = Remote Driver* *Remote Power Supply, ordered separately. Requires proper filter components supplied by others. Consult factory for additional information.	Housing AL = Aluminum	Lumen Output* LAM1: L2 = Standard L3 = Medium LAM2-4: L1 = Standard L2 = Medium L3 = High	Color Temp. 30 = 3000K 35 = 3500K 40 = 4000K 50 = 5000K
1C	LC3		90C	UN	
Circuits 1C = 1 Circuit	Lens LC3 = .125 White Frosted Poly.	Finish BK = Black WH = Matte White BZ = Bronze CC = Custom Color** *Subject to additional fees. Must specify RAL number at time of PO.	CRI 90C = 90CRI	Voltage UN = Universal (120V-277V)	Driver Type DM = 0-10V dimming with 10-100% range DMI = 0-10V Dimming with 1-100% range



New Star Lighting
 2225 W Pershing Rd, Chicago, IL 60609
 (773) 847-1400
www.newstarlighting.com

Specifications and dimensions are subject to change without notice. For additional options and dimensional details, please consult your New Star Lighting representative.

© 2025, New Star Lighting. All rights reserved. Unauthorized duplication or distribution is prohibited.

SPECIFICATIONS

BACKPLATE: Die-formed, seam welded and ground smooth marine grade aluminum.

FRAME: Die-formed, seam welded and ground smooth frame available in aluminum. Custom band options available, consult factory.

LENS: .125" White UV-stabilized polycarbonate lens for maximum diffusion.

LED: Available in four color temperatures 3000K, 3500K, 4000K, and 5000K. Other color temperatures available, consult factory. Minimum 50,000 hours with 70% lumen maintenance in a 25°C ambient temperature, compliant with IES LM-80 testing standards. Dimming options available on Power Enclosure.

ELECTRICAL: 120-277VAC, high-power factor power supply with EMI Filter (supplied by others). Dimming controlled through 0-10V dimmer (supplied by others).

REMOTE POWER SUPPLY: LED driver included - must be remote mount. Must order Power Supply separately on page 3. Consult factory for more information. MRI room EMI filter required, supplied by others.

REFLECTOR: Die-formed aluminum, removable and utilized with all electrical components for easy installation and maintenance.

FASTENERS: Stainless steel Philips flat head screws with captive cage nuts. Finish to match frame.

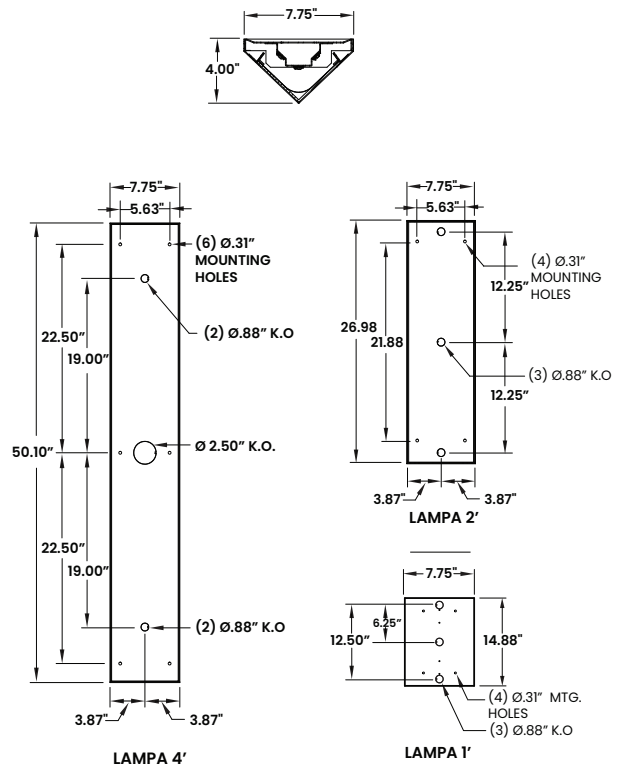
FINISH: Black PPG polyester textured paint or optional custom color. Please specify if custom color should include an anti-microbial finish.

GASKET: Black neoprene gasket around interior door frame to prevent water and dust infiltration.

INSTALLATION: Surface wall mount installation.

LABEL: Fixture is certified to UL Standards. Suitable for Wet Locations. ADA-Complaint. This product was Made in America and complies with the Buy American Act (BAA) and the Build America, Buy America Act (BABAA).

DIMENSIONAL DATA



PERFORMANCE DATA

*LEDs are frequently updated therefore values may change without notice.

MODEL	OUTPUT	COLOR TEMP.	LUMENS DELIVERED	EFFICACY (lm/W)	INPUT POWER (W)
LAM1	L2 = Medium	4000K	650	58	12.5
	L3 = High	4000K	975	58	18.75
LAM2	L1 = Low	4000K	650	58	12.5
	L2 = Medium	4000K	1300	58	25
	L3 = High	4000K	1950	58	37.5
LAM4	L1 = Low	4000K	1300	58	25
	L2 = Medium	4000K	2600	58	50
	L3 = High	4000K	3900	58	75

POWER ENCLOSURE ORDERING INFORMATION

Example: LAM1-PS-L2-1

LAM		PS			
Series	Size* 1 = 1ft 2 = 2ft 4 = 4ft *Nominal Size. Dimensional Data on Page 3.	PS = Power Supply* *Up to 8 drivers can be in a Power Enclosure depending on quantity of fixtures ordered. Consult factory for custom configurations. Configurations must be determined at time of order.	Lumen Output* LAM1: L2 = Standard L3 = Medium LAM2-4: L1 = Standard L2 = Medium L3 = High	Drivers per Fixture* *Please refer to the below chart. Requires proper filtration components by others. Each driver requires a filter.	Options DM = 0-10V dimming with 10-100% range

NUMBER OF DRIVERS PER FIXTURE

*LEDs are frequently updated therefore values may change without notice.

MODEL	SIZE	OUTPUT	NUMBER OF DRIVERS PER FIXTURE
LAM	1 = 1ft	L2 = Medium	1
		L3 = High	1
	2 = 2ft	L1 = Low	1
		L2 = Medium	1
		L3 = High	1
	4 = 4ft	L1 = Low	1
		L2 = Medium	1
		L3 = High	1



New Star Lighting

2225 W Pershing Rd, Chicago, IL 60609
(773) 847-1400
www.newstarlighting.com

Specifications and dimensions are subject to change without notice. For additional options and dimensional details, please consult your New Star Lighting representative.

© 2025, New Star Lighting. All rights reserved. Unauthorized duplication or distribution is prohibited.

IMPORTANT SAFETY MEASURES

Power must be supplied by grounded New Star Remote Power Supply to ensure adequate EMI filtering. Remote Power Supply system must be ordered separately, and installed according to provided instructions.

- This must be installed in accordance with the applicable installation code by a person familiar with the construction and operation of the product and the hazards involved in a MRI environment
- Disconnect power to all circuits before wiring fixture
- Install in accordance with all national, state, and local codes
- Remote Power Supply MUST be grounded
- Failure to install unit on a mechanically sound surface may result in personal injury, physical damage, or potential fire hazard
- Use installation procedures appropriate to a MRI environment and sensitive electronic equipment
- Read all fixture marketing and labels to ensure correct installation of the luminaire
- Supplemental instructions may be located on the luminaire, in addition to the instruction sheet provided by New Star, regarding orientation or mounting restrictions



New Star Lighting

2225 W Pershing Rd, Chicago, IL 60609
(773) 847-1400
www.newstarlighting.com

Specifications and dimensions are subject to change without notice. For additional options and dimensional details, please consult your New Star Lighting representative.

© 2025, New Star Lighting. All rights reserved. Unauthorized duplication or distribution is prohibited.

SPECIFIER ACKNOWLEDGMENT

Contractor acknowledges and understands the requirements of installing New Star Lighting products prior to the installation.
Please sign below before New Star Lighting releases your order.

Signature: _____

Date: _____

Print Name: _____

Project Name: _____

----- See next page for MRI installation registration checklist -----