

PROJECT: \_\_\_\_\_  
 TYPE: \_\_\_\_\_  
 PRODUCT: \_\_\_\_\_  
 APPROVED BY: \_\_\_\_\_



LAM-MRI Series

## PRODUCT FEATURES

- Non-ferrous construction and remote power supplies provide safe operating conditions for MRI machines, medical imaging equipment, and other magnetically sensitive apparatus
- Non-ferrous construction, available in 1ft, 2ft, and 4ft
- Surface Wall Mount Installation
- This product was Made in America and complies with the Buy American Act (BAA) and the Build America, Buy America Act (BABAA)



## ORDERING INFORMATION

Example: LAMI-MRI-AL-L230-90C-1C-LC3-BK-UN-DM

LAM		MRI	AL			
<b>Series</b>	<b>Size*</b> 1 = 1ft 2 = 2ft 4 = 4ft  *Nominal Size. Dimensional Data on Page 2.	<b>MRI = Remote Driver*</b>  *Remote Power Supply, ordered separately. Requires proper filter components supplied by others. Consult factory for additional information.	<b>Housing</b> AL = Aluminum	<b>Lumen Output*</b> <b>LAMI:</b> L2 = Standard L3 = Medium <b>LAM2-4:</b> L1 = Standard L2 = Medium L3 = High	<b>Color Temp.</b> 30 = 3000K 35 = 3500K 40 = 4000K 50 = 5000K	<b>CRI</b> 80C = 80 CRI 90C = 90 CRI
1C	LC3		UN	DM		
<b>Circuits</b> 1C = 1 Circuit	<b>Lens</b> LC3 = .125 White Frosted Poly.	<b>Finish</b> BK = Black WH = Matte White BZ = Bronze CC = Custom Color**  *Subject to additional fees. Must specify RAL number at time of PO.	<b>Voltage</b> UN = Universal (120V-277V)	<b>Driver Type</b> DM = 0-10V dimming with 10-100% range		

## SPECIFICATIONS

**BACKPLATE:** Die-formed, seam welded and ground smooth marine grade aluminum.

**FRAME:** Die-formed, seam welded and ground smooth frame available in aluminum. Custom band options available, consult factory.

**LENS:** .125" White UV-stabilized polycarbonate lens for maximum diffusion.

**LED:** Available in four color temperatures 3000K, 3500K, 4000K, and 5000K. Other color temperatures available, consult factory. Minimum 50,000 hours with 70% lumen maintenance in a 25°C ambient temperature, compliant with IES LM-80 testing standards. Dimming options available on Power Enclosure.

**ELECTRICAL:** 120-277VAC, high-power factor power supply with EMI Filter (supplied by others). Dimming controlled through 0-10V dimmer (supplied by others).

**REMOTE POWER SUPPLY:** LED driver included - must be remote mount. Must order Power Supply separately on page 3. Consult factory for more information. MRI room EMI filter required, supplied by others.

**REFLECTOR:** Die-formed aluminum, removable and utilized with all electrical components for easy installation and maintenance.

**FASTENERS:** Stainless steel Philips flat head screws with captive cage nuts. Finish to match frame.

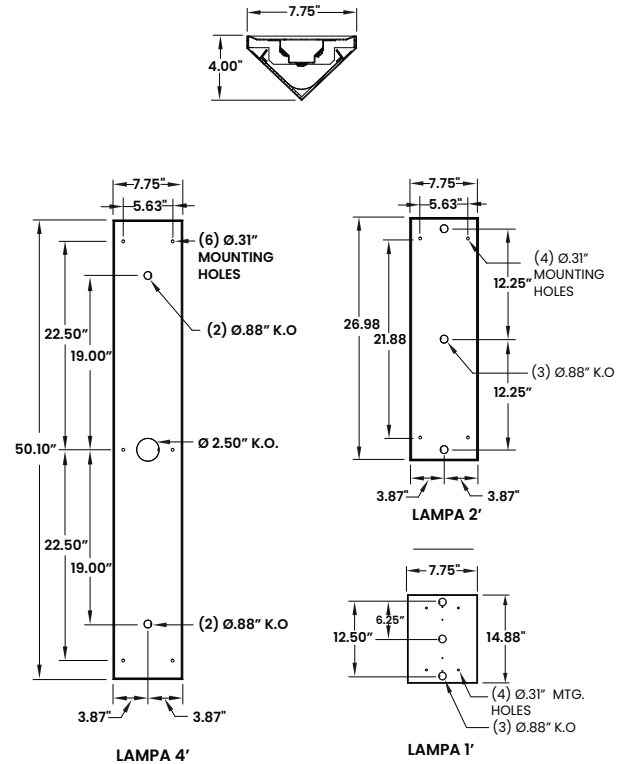
**FINISH:** Black PPG polyester textured paint or optional custom color. Please specify if custom color should include an anti-microbial finish.

**GASKET:** Black neoprene gasket around interior door frame to prevent water and dust infiltration.

**INSTALLATION:** Surface wall mount installation.

**LABEL:** Fixture is certified to UL Standards. Suitable for Wet Locations. ADA-Compliant. This product was Made in America and complies with the Buy American Act (BAA) and the Build America, Buy America Act (BABAA).

## DIMENSIONAL DATA



**PERFORMANCE DATA**

\*LEDs are frequently updated therefore values may change without notice.

MODEL	OUTPUT	COLOR TEMP.	LUMENS DELIVERED	EFFICACY (lm/W)	INPUT POWER (W)
LAM1	L2 = Medium	4000K	650	58	12.5
	L3 = High	4000K	975	58	18.75
LAM2	L1 = Low	4000K	650	58	12.5
	L2 = Medium	4000K	1300	58	25
	L3 = High	4000K	1950	58	37.5
LAM4	L1 = Low	4000K	1300	58	25
	L2 = Medium	4000K	2600	58	50
	L3 = High	4000K	3900	58	75

**POWER ENCLOSURE ORDERING INFORMATION**

Example: LAM1-PS-L2-1

LAM		PS			
<b>Series</b>	<b>Size*</b> 1 = 1ft 2 = 2ft 4 = 4ft  *Nominal Size. Dimensional Data on Page 3.	<b>PS = Power Supply*</b>  *Up to 8 drivers can be in a Power Enclosure depending on quantity of fixtures ordered. Consult factory for custom configurations. Configurations must be determined at time of order.	<b>Lumen Output*</b> <b>LAM1:</b> L2 = Standard L3 = Medium <b>LAM2-4:</b> L1 = Standard L2 = Medium L3 = High	<b>Drivers per Fixture*</b>  *Please refer to the below chart. Requires proper filtration components by others. Each driver requires a filter.	<b>Options</b> DM = 0-10V dimming with 10-100% range

**NUMBER OF DRIVERS PER FIXTURE**

\*LEDs are frequently updated therefore values may change without notice.

MODEL	SIZE	OUTPUT	NUMBER OF DRIVERS PER FIXTURE
LAM	1 = 1ft	L2 = Medium	1
		L3 = High	1
	2 = 2ft	L1 = Low	1
		L2 = Medium	1
		L3 = High	1
	4 = 4ft	L1 = Low	1
		L2 = Medium	1
		L3 = High	1

## IMPORTANT SAFETY MEASURES

Power must be supplied by grounded New Star Remote Power Supply to ensure adequate EMI filtering. Remote Power Supply system must be ordered separately, and installed according to provided instructions.

- This must be installed in accordance with the applicable installation code by a person familiar with the construction and operation of the product and the hazards involved in a MRI environment
- Disconnect power to all circuits before wiring fixture
- Install in accordance with all national, state, and local codes
- Remote Power Supply MUST be grounded
- Failure to install unit on a mechanically sound surface may result in personal injury, physical damage, or potential fire hazard
- Use installation procedures appropriate to a MRI environment and sensitive electronic equipment
- Read all fixture marketing and labels to ensure correct installation of the luminaire
- Supplemental instructions may be located on the luminaire, in addition to the instruction sheet provided by New Star, regarding orientation or mounting restrictions



### New Star Lighting

2225 W Pershing Rd, Chicago, IL 60609  
(773) 847-1400  
[www.newstarlighting.com](http://www.newstarlighting.com)

Specifications and dimensions are subject to change without notice. For additional options and dimensional details, please consult your New Star Lighting representative.

© 2026, New Star Lighting. All rights reserved. Unauthorized duplication or distribution is prohibited.