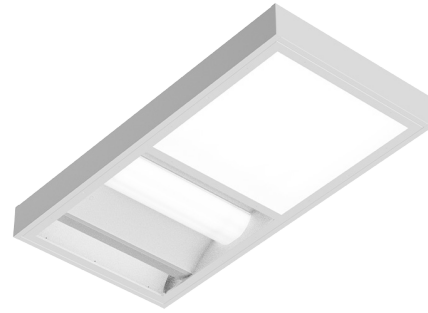


STARMED™ M3 LED SERIES



PROJECT: _____
 TYPE: _____
 PRODUCT: _____
 APPROVED BY: _____



M3 Series

PRODUCT FEATURES

- Intended for Patient Rooms, Exam Rooms, Procedure Rooms, Recovery Areas, Skilled Nursing, and more
- Three-compartment 2x4 with Ambient, Exam & Reading functions
- Surface, Grid or Flange installation
- Fixture is certified to UL standards by Intertek Testing Laboratory for damp locations
- This product was Made in America and complies with the Buy American Act (BAA), and the Build America, Buy America Act (BABAA)

ORDERING INFORMATION

Example: M3U24-HC/IC-L435-L135-1C-E/A-90C-UN-DM1



M3		24	/			
Series	Mounting U = Surface/Grid F = Flange	Size* 24 = 2x4 *Nominal Size. Dimensional Data on Page 2.	Housing HC = 20Ga. CRS Painted HS = 20Ga. SS Brushed HP = 20Ga. SS Painted HA = 16Ga. Alum. Painted	Inset Frame IC = 18Ga. CRS Painted IA = 16Ga. Alum. Painted IB = 18Ga. SS Brushed IS = 18Ga. SS Painted	Exam Lumen Output* L4 = Low L6 = Standard L8 = High *Subject to change. Performance data on Page 3.	Exam Color Temp. 35 = 3500K 40 = 4000K 50 = 5000K

		/		90C	
Ambient Lumen Output* L1 = Low L2 = Standard L3 = High *Subject to change. Performance Data on page 3. Ambient Compartment diffused with a white ribbed poly. lens.	Ambient Color Temp.* 35 = 3500K 40 = 4000K 50 = 5000K TW1 = Tunable White 2700K to 5000K** TW2 = Tunable White 2700K to 6500K** BIOS Options:*** BIOS Color Temp.**** B30 = 3000K B35 = 3500K B40 = 4000K BIOS Tunable CCT**** BTW1 = 2700K-3500K BTW2 = 2700K-4000K *Selected CCT will be the same for both ambient and exam functions. **Available for ambient function only. See Page 2 to specify system. ***Choosing this, you must also pick a BIOS driver under the Options column (STC or DMB). ****Please choose corresponding BIOS driver.	Circuits 1C = 1 Circuit 2C = 2 Circuits 3C = 3 Circuits 4C = 3 Circuits	Exam Lens E = .125 White Frosted Poly. F = .125 White Frosted Acrylic	Ambient/Reading Overlay* A = .125 Clear Acrylic B = .125 Clear Poly. *Clear lens overlay for ambient and reading compartments to create surface for easy cleaning.	CRI 90C = 90 CRI Voltage 12 = 120V 27 = 277V 34 = 347V UN = Universal (120V-277V)

Driver Type DM1 = 0-10V Dimming to 1% Tunable White Driver*: TWD = 2-Channel 0-10V DALI8 DALI8 = 1-Channel DALI8 BIOS Driver:** STC = Static BIOS*** DMB = Dynamic BIOS Dimming**** *Tunable White Driver requires choice of TW1 or TW2 in Color Temp. column. **BIOS drivers only work with BIOS LEDs. Must select STC or DMB option, otherwise leave field blank and standard 0-10V driver will be provided. ***0-10V with Dimming from 1%-100%. ****0-10V Intensity Dimming to 1% and Dim-to-Dark capabilities.	Control LV3 = Dimming Low Voltage Controller* *LV3 controls ambient function with dimming. Exam and Night Light (if specified) are on separate line voltage circuits. N/A with emergency battery.	Options FZ1 = Fuse (120V) FZ2 = Fuse (277V) EL1 = Emerg. Bat. LED Low (10W)* RF = (RIF) Radio Interference Filter* TH = Tamper-resistant Torx® head fasteners LN = LED Night Light** *Not available for 347V Voltage. *Consult factory for CA Title 24 options. If stored, batteries should be fully recharged every six months and kept between 0°C-25°C to maintain optimal battery capacity. **3500K non-dimming Night Light with integrate switch allows light levels at 100%, 70%, 40% and 10%.
--	--	--



New Star Lighting

2225 W Pershing Rd, Chicago, IL 60609
 (773) 847-1400
 www.newstarlighting.com

Specifications and dimensions are subject to change without notice. For additional options and dimensional details, please consult your New Star Lighting representative.

SPECIFICATIONS

HOUSING: 20-Gauge formed cold rolled steel housing with seam welded and ground smooth. Aluminum and stainless steel options available.

DOORFRAME: Inset 18-gauge formed cold rolled steel or stainless steel door frame. Optional 16-gauge aluminum also available.

LENS: .125" White polycarbonate or acrylic lens for maximum light diffusion while maintaining proper exam lumen output.

LED: Available in three color temperatures 3500K, 4000K, and 5000K with maximum 3-step MacAdam variation allowance. Tunable White also available, from 2700K – 5000K or 2700K – 6500K. Minimum 50,000 hours with 70% lumen maintenance in a 25°C ambient temperature environment, compliant with IES LM-80 testing standards.

Optional BIOS® SkyBlue® circadian solutions to produce the healthy "blue sky" light signal with blue spectrum peak at 490nm+ for circadian entrainment. Bio-Dimming™ reduces CCT by 2700K.

ELECTRICAL: 120-277VAC or 347VAC 50/60HZ electrical input high power factor electronic, constant current driver (<20% THD, >0.90 PF). Standard 0-10V dimming with 1-100% range.

OPTIONAL TUNABLE WHITE DRIVERS:

DALI8- DALI Type 8 (One DALI Address)
TWO- Two Channel 0-10V dimming; one channel for brightness, one channel for CCT

OPTIONAL BIOS DRIVER OPTIONS:

STC – BIOS control 0-10V with Dimming from 1%-100% and Dynamic Bios Dimming with 0-10V Intensity Dimming to 1% and Dim-to-Dark capabilities.

DMB – Dynamic BIOS control 0-10V with dynamic spectrum and BIOS SkyBlue® with Bio-Dimming™, which changes a spectral qualities by removing the SkyBlue component when dimming from 100%-51%, while light output remains relatively constant; CCT will decrease approximately 500K through bio-dimming; dimming from 50% to 1% will then reduce light output.

LOW VOLTAGE CONTROL: The Low Voltage Control (LVC3) option controls ambient function with dimming, and reading is non-dimming (on/off). The Exam and Night Light functions are on separate line voltage circuits. The Exam and Night Light functions are on separate line voltage circuits; the nightlight LED board has (4) settings that are field selectable. The exam is typically wired to a wall switch (by others) and is dimmable. Other configurations are available – consult factory. Leads are factory labeled for field installation. Controls and any additional accessories by others.

FASTENERS: Stainless steel Phillips flat head fasteners with captive cage nuts. Finish to match doorframe.

FINISH: White antimicrobial polyester powder coat finish following multi-stage iron phosphate pretreatment on all exposed room-side painting surfaces, unless otherwise specified.

GASKET: Closed cell EPDM and closed cell silicone gaskets prevent air contaminants from entering the fixture.

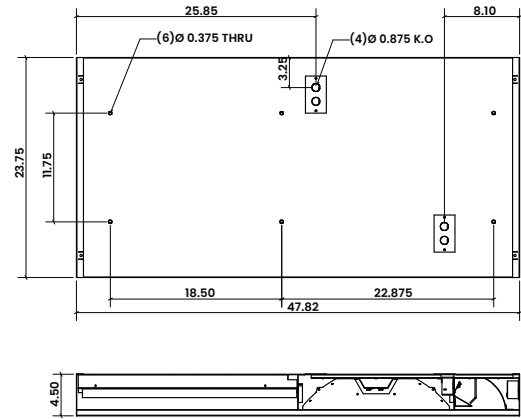
INSTALLATION: Recessed mounting accommodates Grid and Flange installations. Luminaires will be supplied with adjustable swing arms that can be used for Flange applications or secured to the side of housing for Grid applications. Compatible with 1-1/2" and 15/16" Grid systems. Mounting for custom ceilings available, consult factory.

WARRANTY: 5 Year Warranty.

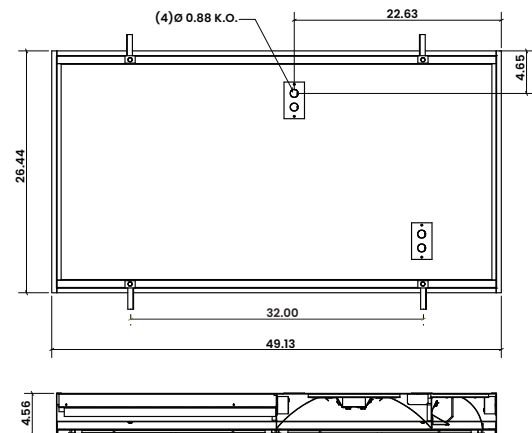
LABEL: Fixture is Damp Location certified to UL standards by Intertek Testing Laboratory. This product is Made in America and complies with Buy American Act (BAA), and the Build America, Buy America Act (BABAA).

DIMENSIONAL DATA

M3U24



M3F24




PERFORMANCE DATA*

*Delivered lumens are subject to change.

MODEL	OUTPUT	COLOR TEMP.	LUMENS DELIVERED	EFFICACY (lm/W)	INPUT POWER (W)
M3 EXAM	Low	3500K	6000	120	50
		4000K	6250	125	50
		5000K	6500	130	50
	Standard	3500K	8625	115	75
		4000K	9000	120	75
		5000K	9375	125	75
	High	3500K	11500	115	100
		4000K	12000	120	100
		5000K	12500	125	100
M3 AMBIENT	Low	4000K	1200	100	125
	Standard	4000K	2400	100	25
	High	4000K	3600	100	37.5
M3 READING	Standard	3000K	780	60	13

THIS ONLY PERTAINS TO BIOS PERFORMANCE DATA*

*LEDs are frequently updated therefore values may change without notice.

MODEL	OUTPUT	COLOR TEMP	LUMENS DELIVERED	EFFICACY (lm/W)	INPUT POWER (W)
	Low	4000K	1079	83	13
	Standard	4000K	2158	83	26
	High	4000K	3320	83	40



New Star Lighting

2225 W Pershing Rd, Chicago, IL 60609
(773) 847-1400
www.newstarlighting.com

Specifications and dimensions are subject to change without notice. For additional options and dimensional details, please consult your New Star Lighting representative.

© 2025, New Star Lighting. All rights reserved. Unauthorized duplication or distribution is prohibited.