

STARMED™ M2 LED SERIES



PROJECT: _____

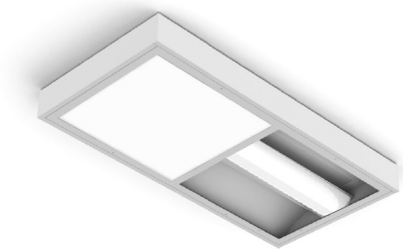
TYPE: _____

PRODUCT: _____

APPROVED BY: _____

PRODUCT FEATURES

- Intended for Patient Rooms, Exam Rooms, Procedure Rooms, Recovery Areas, Skilled Nursing, and more
- Two-compartment 2x4 with Ambient & Exam functions
- Surface, Grid or Flange installation
- Fixture is certified to UL standards by Intertek Testing Laboratory for damp locations
- This product was Made in America and complies with the Buy American Act (BAA) requirements



M2 Series

ORDERING INFORMATION

Example: M2U24-HC/IC-L440-L335-2C-E/A-UN-90C



M2		24				
Series	Mounting U = Surface/Grid F = Flange	Size* 24 = 2x4 *Nominal Size. Dimensional Data on Page 2.	Housing HC = 20Ga. CRS Painted HS = 20Ga. SS Brushed HP = 20Ga. SS Painted HA = 16Ga. Alum. Painted	Inset Frame IC = 18Ga. CRS Painted IA = 16Ga. Alum. Painted IB = 18Ga. SS Brushed IS = 18Ga. SS Painted	Exam Lumen Output* L4 = Low L6 = Standard L8 = High *Subject to change. Performance data on Page 3.	Exam Color Temp. 35 = 3500K 40 = 4000K 50 = 5000K

Ambient Lumen Output* L4 = Low L6 = Standard L8 = High *Subject to change. Performance Data on page 3. Ambient Compartment diffused with a white ribbed poly. lens.	Ambient Color Temp.* 35 = 3500K 40 = 4000K 50 = 5000K TW1 = Tunable White 2700K to 5000K** TW2 = Tunable White 2700K to 6500K** *Selected CCT will be the same for both ambient and exam functions. **Available for ambient function only. See Page 2 to specify system.	Circuits 1C = 1 Circuit 2C = 2 Circuits 3C = 3 Circuits	Exam Lens E = .125 White Frosted Poly. F = .125 White Frosted Acrylic	Ambient Overlay A = .125 Clear Acrylic B = .125 Clear Poly. *Clear lens overlay for ambient and reading compartments to create surface for easy cleaning.	Doorframe Lens* A = .125 Clear Acrylic B = .125 Clear Poly. *Clear lens over ambient & reading compartment seals fixture for easy cleaning.
--	---	--	---	--	--

Voltage 12 = 120V 27 = 277V 34 = 347V UN = Universal (120V-277V)	Options FZ1 = Fuse (120V) FZ2 = Fuse (277V) EL1 = Emerg. Bat. LED Low (10W) FY = Yoke Bracket (Replaces swing arm) RF = (RIF) Radio Interference Filter TH = Tamper-resistant Torx® head fasteners LN = LED Night Light* LV2 = On/Off Curbell Low Voltage Controller** LV3 = Dimming Curbell Low Voltage Controller** *3500K non-dimming Night Light with integrate switch allows light levels at 100%, 70%,40% and 10%. **LV2 controls ambient function without dimming (on/off function only). Exam and Night Light (if specified) are on separate line voltage circuits. Must specify voltage. N/A with emergency battery. ***LV3 controls ambient function with dimming. Exam and Night Light (if specified) are on separate line voltage circuits. N/A with emergency battery."
--	--



New Star Lighting
2225 W Pershing Rd, Chicago, IL 60609
(773) 847-1400
www.newstarlighting.com

Specifications and dimensions are subject to change without notice. For additional options and dimensional details, please consult your New Star Lighting representative.

SPECIFICATIONS

HOUSING: 20-Gauge formed cold rolled steel housing with seam welded and ground smooth. Aluminum and stainless steel options available.

DOORFRAME: Inset 18-gauge formed cold rolled steel or stainless steel door frame. Optional 16-gauge aluminum also available.

LENS: .125" White polycarbonate or acrylic lens for maximum light diffusion while maintaining proper exam lumen output.

LED: Available in three color temperatures 3500K, 4000K, and 5000K with maximum 3-step MacAdam variation allowance. Tunable White also available, from 2700K – 5000K or 2700K – 6500K. Minimum 50,000 hours with 70% lumen maintenance in a 25°C ambient temperature, compliant with IES LM-80 testing standards.

ELECTRICAL: 120-277VAC or 347VAC 50/60HZ electrical input high power factor electronic, constant current driver (<20% THD, >0.95 PF). Standard 0-10V dimming with 1-100% range.

OPTIONAL TW DRIVERS:

DALI8- DALI Type 8 (One DALI Address)

TWD- Two Channel 0-10V dimming; one channel for brightness, one channel for CCT

LOW VOLTAGE CONTROL: Two Low Voltage Control (LVC) options; Voltage-specific LV2 controls ambient function without dimming (on/off function only). LV3 option controls ambient function with dimming. With either LVC option, Exam and Night Light are on separate line voltage circuits.

FASTENERS: Stainless steel Phillips flat head fasteners with captive cage nuts. Finish to match doorframe.

FINISH: White antimicrobial powder coat finish following multi-stage iron phosphate pre-treatment.

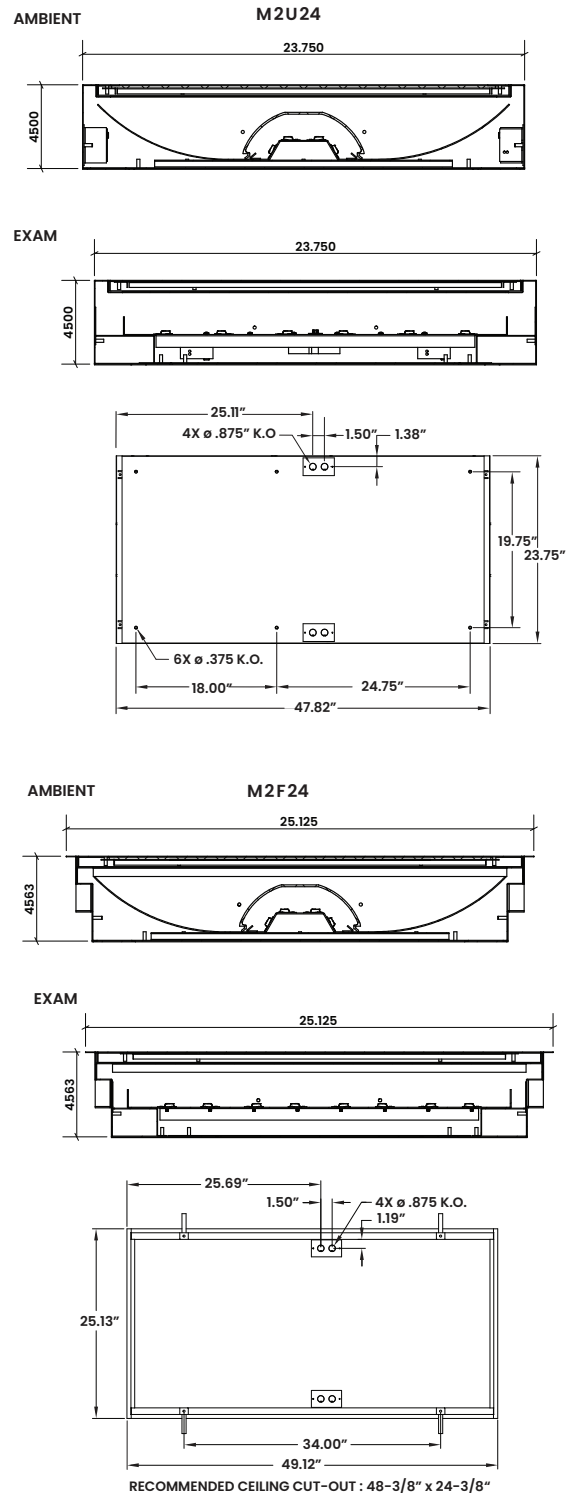
GASKET: Closed cell EPDM and closed cell silicone gaskets prevent air contaminations from entering the fixture.

INSTALLATION: Universal recessed mounting accommodates Grid and Flange installations. Luminaires will be supplied with adjustable swing arms that can be used for Flange applications or secured to the side of housing for Grid applications. Compatible with 1-1/2" and 15/16" Grid systems. Mounting for custom ceilings available, consult factory.

WARRANTY: 5 Year Warranty.

LABEL: Fixture is Damp Location certified to UL standards by Intertek Testing Laboratory. This product is Made in America and complies with Buy American Act requirements.

DIMENSIONAL DATA



New Star Lighting

2225 W Pershing Rd, Chicago, IL 60609
(773) 847-1400
www.newstarlighting.com

Specifications and dimensions are subject to change without notice. For additional options and dimensional details, please consult your New Star Lighting representative.

© 2024, New Star Lighting. All rights reserved. Unauthorized duplication or distribution is prohibited.

PERFORMANCE DATA*

*Note, M1 is out for updated photometry. Delivered lumens are subject to change.

MODEL	OUTPUT	COLOR TEMP.	LUMENS DELIVERED	EFFICACY (lm/w)	INPUT POWER (W)
M2	Low	3500K	6000	120	50
		4000K	6250	125	50
		5000K	6500	130	50
	Standard	3500K	8625	115	75
		4000K	9000	120	75
		5000K	9375	125	75
	High	3500K	11500	115	100
		4000K	12000	120	100
		5000K	12500	125	100
M2 AMBIENT	Low	4000K	1200	100	125
	Standard	4000K	2400	100	25
	High	4000K	3600	100	37.5

