

STARMED™ M1 LED SERIES



PROJECT: _____

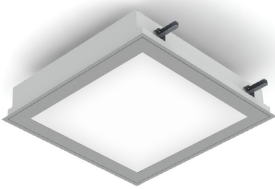
TYPE: _____

PRODUCT: _____

APPROVED BY: _____

PRODUCT FEATURES

- Intended for Exam Rooms, Procedure Rooms, Recovery Areas, Skilled Nursing, and more
- Ambient luminaire available in 2x2
- Surface, Grid or Flange installation
- Fixture is certified to UL standards by Intertek Testing Laboratory for damp locations
- This product was Made in America and complies with the Buy American Act (BAA) requirements



M1 Series

ORDERING INFORMATION

Example: M1U22-HC/IC-L4401C-E-UN-DM1



M1		22			
Series	Mounting U = Surface/Grid F = Flange	Size* 22 = 2x2 *Nominal Size. Dimensional Data on Page 2.	Housing HC = 20Ga. CRS Painted HS = 20Ga. SS Brushed HP = 20Ga. SS Painted HA = 16Ga. Alum. Painted	Inset Frame IC = 18Ga. CRS Painted IA = 16Ga. Alum. Painted IB = 18Ga. SS Brushed IS = 18Ga. SS Painted	Lumen Output* L4 = Low L6 = Standard L8 = High *Subject to change. Performance data on Page 3.
Color Temp. 35 = 3500K 40 = 4000K 50 = 5000K TW1 = Tunable White 2700K to 5000K TW2 = Tunable White 2700K to 6500K	Circuits 1C = 1 Circuit 2C = 2 Circuits* *Allows for Inboard/ Outboard control.	Lens E = .125 White Frosted Poly. F = .125 White Frosted Acrylic	Voltage 12 = 120V 27 = 277V 34 = 347V UN = Universal (120V-277V)	Driver Type DMI = 0-10V Dimming to 1% Tunable White Driver*: DALI8 = 1-Channel TW0 = 2-Channel 0-10V *Allows for Inboard/Outboard control.	Options FZ1 = Fuse (120V) FZ2 = Fuse (277V) EL1 = Emerg. Bat. LED Low (10W) FY = Yoke Bracket (Replaces swing arm) RF = (RIF) Radio Interference Filter TH = Tamper-resistant Torx® head fasteners LN = LED Night Light* *3500K non-dimming Night Light with integrated switch allows light levels at 100%, 70%, 40% and 10%.



New Star Lighting
2225 W Pershing Rd, Chicago, IL 60609
(773) 847-1400
www.newstarlighting.com

Specifications and dimensions are subject to change without notice. For additional options and dimensional details, please consult your New Star Lighting representative.

SPECIFICATIONS

HOUSING: 20-Gauge formed cold rolled steel housing with seam welded and ground smooth. Aluminum and stainless steel options available.

DOORFRAME: Inset 18-gauge formed cold rolled steel or stainless steel door frame. Optional 16-gauge aluminum also available.

LENS: .125" White polycarbonate or acrylic lens for maximum light diffusion while maintaining proper exam lumen output.

LED: Available in three color temperatures 3500K, 4000K, and 5000K with maximum 3-step MacAdam variation allowance. Tunable White also available, from 2700K – 5000K or 2700K – 6500K. Minimum 50,000 hours with 70% lumen maintenance in a 25°C ambient temperature, compliant with IES LM-80 testing standards."

ELECTRICAL: 120-277VAC or 347VAC 50/60HZ electrical input high power factor electronic, constant current driver (<20% THD, >0.95 PF). Standard 0-10V dimming with 1-100% range.

OPTIONAL TW DRIVERS:

DALI8- DALI Type 8 (One DALI Address)

TWD- Two Channel 0-10V dimming; one channel

for brightness, one channel for CCT

FASTENERS: Stainless steel Philips flat head fasteners with captive cage nuts. Finish to match doorframe.

FINISH: White antimicrobial powder coat finish following multi-stage iron phosphate pretreatment on all exposed room-side painting surfaces, unless otherwise specified.

GASKET: Closed cell EPDM and closed cell silicone gaskets prevent air contaminations from entering the fixture.

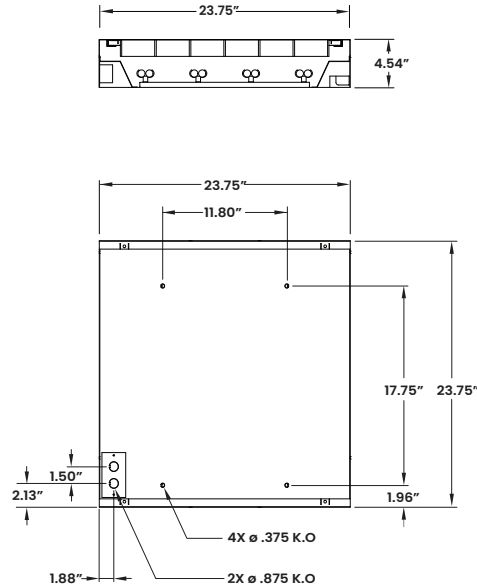
INSTALLATION: Universal recessed mounting accommodates Grid and Flange installations. Luminaires will be supplied with adjustable swing arms that can be used for Flange applications or secured to the side of housing for Grid applications. Compatible with 1-1/2" and 15/16" Grid systems. Mounting for custom ceilings available, consult factory.

WARRANTY: 5 Year Warranty.

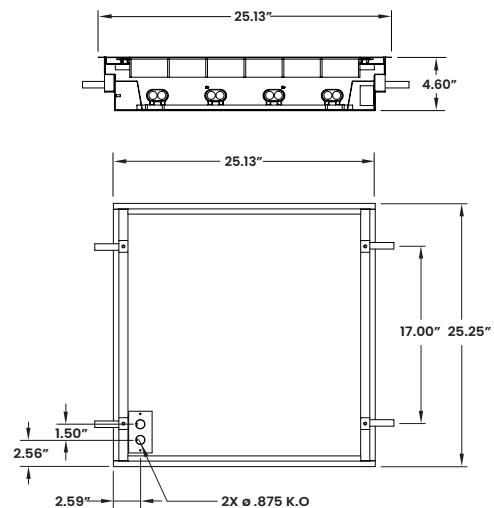
LABEL: Fixture is Damp Location certified to UL standards by Intertek Testing Laboratory. This product is Made in America and complies with Buy American Act requirements.

DIMENSIONAL DATA

M1U22



M1F22



RECOMMENDED CEILING CUT-OUT
24-3/8"x24-3/8"



New Star Lighting

2225 W Pershing Rd, Chicago, IL 60609
(773) 847-1400
www.newstarlighting.com

Specifications and dimensions are subject to change without notice. For additional options and dimensional details, please consult your New Star Lighting representative.

© 2024, New Star Lighting. All rights reserved. Unauthorized duplication or distribution is prohibited.

PERFORMANCE DATA*

*Note, M1 is out for updated photometry. Delivered lumens are subject to change.

MODEL	OUTPUT	LUMENS DELIVERED	EFFICACY (lm/w)	INPUT POWER (w)
M1	Low	6000	120	50
		6250	125	50
		6500	130	50
	Standard	8625	115	75
		9000	120	75
		9375	125	75
	High	11500	115	100
		12000	120	100
		12500	125	100