

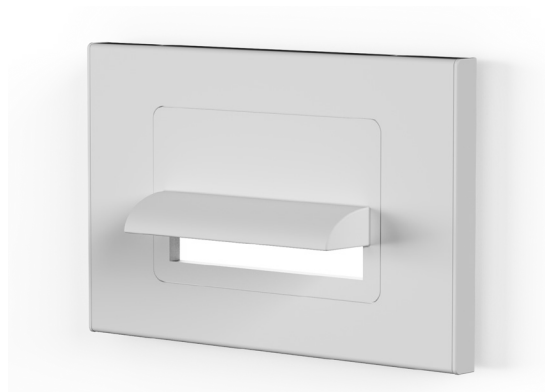
# HNL STEP LIGHT SERIES: QUICK SHIP



PROJECT: \_\_\_\_\_  
 TYPE: \_\_\_\_\_  
 PRODUCT: \_\_\_\_\_  
 APPROVED BY: \_\_\_\_\_

## PRODUCT FEATURES

- Intended for Fall Prevention in healthcare settings, including Patient Rooms, Patient Bathrooms, Corridors, Lobbies, Waiting Rooms, Nurses' Stations, and more
- 5 Day Quick Ship for orders under 50 fixtures. Consult factory for large quantities or additional fixture options
- Four faceplate options: horizontal or vertical hood, horizontal louver, and open frame
- Constructed of durable die-cast aluminum with integral embedded driver (3W)
- Available in White CCTs: 3000K, 4000K, 5000K and Amber LED



HNL Quick Ship Series

## ORDERING INFORMATION

Example: HNL-HH-30-80C-UN-NF-AM-QS



HNL			80C	UN	NF	AM	QS
Series	<b>Faceplate</b> HH = Horizontal Hood HL = Horizontal Louver OF = Open Frame* VH = Vertical Hood  *Can be installed horizontally or vertically.	<b>Color Temp.</b> 30 = 3000K 40 = 4000K 50 = 5000K LA = Amber LED	<b>CRI</b> 80C = 80 CRI	<b>Voltage</b> UN = Universal (120V-277V)	<b>Options</b> NF = None	<b>Finish</b> AM = Antimicrobial White	QS = Quick Ship



**New Star Lighting**  
 2225 W Pershing Rd, Chicago, IL 60609  
 (773) 847-1400  
[www.newstarlighting.com](http://www.newstarlighting.com)

Specifications and dimensions are subject to change without notice. For additional options and dimensional details, please consult your New Star Lighting representative.

© 2025, New Star Lighting. All rights reserved. Unauthorized duplication or distribution is prohibited.

## SPECIFICATIONS

**HOUSING:** Durable die-cast aluminum material. Available with four different faceplates: Horizontal Hood, Horizontal Louver, Open Frame (can be installed vertically or horizontally), and Vertical Hood.

**LED:** Available in three color temperatures 3000K, 4000K, and 5000K with maximum 3-step MacAdam variation allowance. Amber LED is also available. Minimum 50,000 hours with 70% lumen maintenance in a 25°C ambient temperature environment, compliant with IES LM-80 testing standards.

**ELECTRICAL:** Integrated embedded driver (3W). Standard 0-10V Dimming with 10-100% range.

**FINISH:** White antimicrobial finish polyester powder coat finish following multi-stage iron phosphate pretreatment on all exposed room-side surfaces, unless otherwise specified. Custom color available, must specify RAL number and indicate if antimicrobial finish is needed (set-up fees may apply).

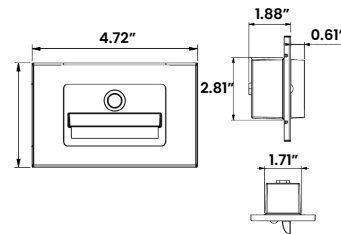
**INSTALLATION:** Recessed wall mount installation. J-Box and hardware by others.

**WARRANTY:** 5 Year Warranty.

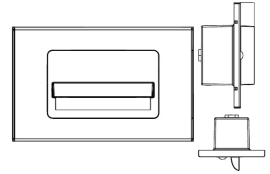
**LABEL:** Fixture is certified to UL standards for Wet Location rating (under covered ceiling).

## DIMENSIONAL DATA

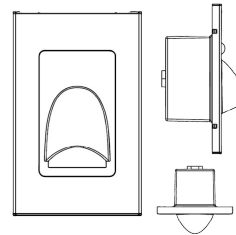
**HORIZONTAL HOOD WITH PH/OC**



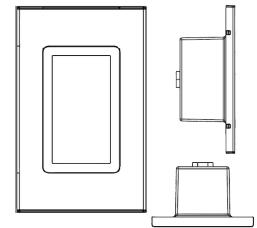
**HORIZONTAL HOOD WITHOUT PH/OC**



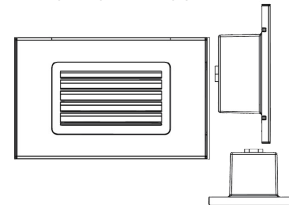
**VERTICAL HOOD**



**OPEN FRAME  
(VERTICAL OR HORIZONTAL)**



**HORIZONTAL LOUVER**



PERFORMANCE DATA\*

\*LEDs are frequently updated therefore values may change without notice.

MODEL	COLOR TEMP.	LUMENS DELIVERED	EFFICACY (lm/W)	INPUT POWER (W)
HNL-OF	3000K	250	66	3.8
	4000K	240	63	3.8
	5000K	253	67	3.8
	Amber LED	170	45	3.8
HNL-VH	3000K	92	24	3.8
	4000K	82	22	3.8
	5000K	95	25	3.8
	Amber LED	61	16	3.8
HNL-HH	3000K	130	34	3.8
	4000K	120	32	3.8
	5000K	133	35	3.8
	Amber LED	88	23	3.8