

HIGH ABUSE LINEAR SERIES



PROJECT: \_\_\_\_\_

TYPE: \_\_\_\_\_

PRODUCT: \_\_\_\_\_

APPROVED BY: \_\_\_\_\_

PRODUCT FEATURES

- Intended for Public Areas, Corridors, Stairways, Underpasses, Parking Garages, Restrooms, Lobbies, Schools, and more
- Recessed linear luminaire available in 2’ – 8’ lengths
- Up to 1200 lumens/ft.
- Extruded aluminum doorframe with continuous lens retention and tamper-resistant fasteners
- Certified to UL standards by Intertek Testing Laboratory, IP65 rated per IEC60598. NSF2/Non-Food Zone Listed, IK10 Listed per IEC60068-2-75, IC Rated
- This product is Made in America and complies with the Buy American Act (BAA)
- The HAL Series is covered by the New Star Promise



HAL Series

ORDERING INFORMATION

Example: HAL48-FL-500-35-90C-WH-D-SYM-UN-DM1



HAL						
Series	Nominal Length*	Ceiling Configuration	Lumen Output*	Color Temp.	CRI	Finish
	24 = 2'	TB9 = 9/16" Lay-In Grid	500 = 500LM/FT-Min	30 = 3000K	80C = 80 CRI	WH = White*
	36 = 3'	TB15 = 15/16" Lay-In Grid	1200 = 1200LM/FT-Max	35 = 3500K	90C = 90 CRI	C = Custom**
	48 = 4'	TG9 = 9/16" Tegular Grid		40 = 4000K		
	72 = 6'	TG15 = 15/16" Tegular Grid	*Outputs between listed min and max are available.	50 = 5000K		*Standard finish.
	96 = 8'	FL = Flange				**Must specify RAL number and if antimicrobial finish is needed at time of order. Subject to set-up fees.
		NFL = No Flange				
		ST = Screw Slot				
		TM = Trimless Mud-In for 5/8" Drywall				
	*Available in 1' increments. Consult factory for other lengths.					

D				
Outer Lens	Inner Lens	Voltage	Driver Type	Options
D = .250 Clear Poly.	SYM = Symmetrical ASY = Asymmetrical	12 = 120V 27 = 270V 34 = 347V* UN = Universal (120V-277V)  *347V only available with DMI Drivers.	DM1 = 0-10V Dimming with 1-100% range	B(#) = Battery Pack* GTD(1) = Generator transfer device* +E(1) = Emergency section  *Available for fixture lengths of 4' or greater

## SPECIFICATIONS

**HOUSING:** Extruded aluminum construction with sheet metal endcaps. Closed cell neoprene pad in doorframe.

**LENS:** Combination of acrylic and/or polycarbonate prismatic inner lens, clear outer lens, maximum thickness 0.25" for durability.

**DOORFRAME:** Extruded aluminum doorframe secured with tamper-resistant Torx® fasteners. Safety aircraft cable also secures doorframe to housing for easy maintenance.

**LED:** Available in four color temperatures 3000K, 3500K, 4000K, and 5000K with maximum 3-step MacAdam variation allowance. Minimum 50,000 hours with 85% lumen maintenance in a 25°C ambient temperature environment, compliant with IES LM-80 testing standards.

**ELECTRICAL:** Standard 120-277VAC 50/60Hz or 347VAC 60Hz electrical input with serviceable constant-current drivers (<10%THD, >0.90 PF). 0-10V Dimming with 1-100% range.

**FINISH:** White polyester powder coat finish following multi-stage iron phosphate pre-treatment on all exposed room-side surfaces. Custom finishes also available.

**INSTALLATION:** Recessed Grid, Screw Slot Grid, Drywall Flange, Drywall Flangeless and Mud-In Flange options.

**WARRANTY:** Five (5) year warranty.

**LISTINGS:** Fixture is certified to UL standards by Intertek Testing Laboratory. IP65 Rating per IEC6598. Certified for NSF2 Splash Zone/ Non-Food Zones. IC Rated. Standard CCEA compliance. This product is Made in America and complies with the Buy American Act (BAA).

## DIMENSIONAL DATA

		Fixture Length				
		2'	3'	4'	6'	8'
		(24")	(36")	(48")	(72")	(96")
Mounting	ST	23.875	35.875	47.875	71.875	95.875
	TB9	23.87725	35.87725	47.87725	71.87725	95.87725
	TB15	23.87725	35.87725	47.87725	71.87725	95.87725
	TG9	23.875	35.875	47.875	71.875	95.875
	TG15	23.5	35.5	47.5	71.5	95.5
	FL/NFL/TM	23.87725	35.87725	47.87725	71.87725	95.87725

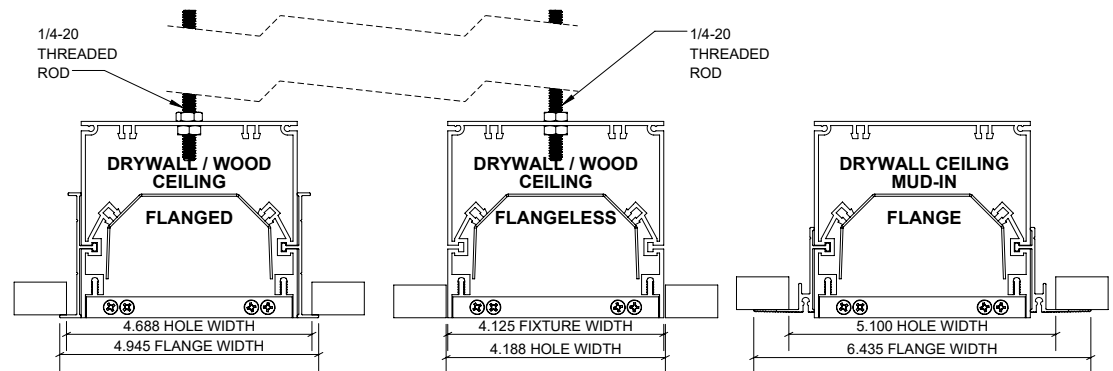
\*Additional dimensional information on page 3



Our promise means we will repair or replace any of our High Abuse or Vandal-Resistant architectural luminaires when installed according to our instructions for the life of the original installation if the fixture should fail due to physical abuse\*.

\*Damage caused by gunfire and chemical reactions is not covered by the New Star Promise

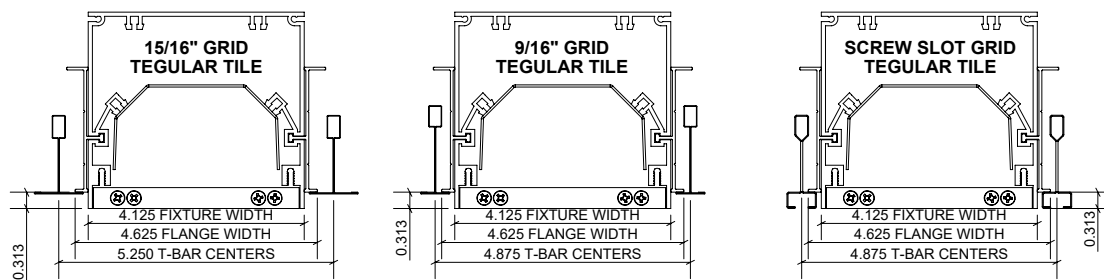
## DIMENSIONAL DATA (CONT.)



FL  
Flange

NFL  
No Flange

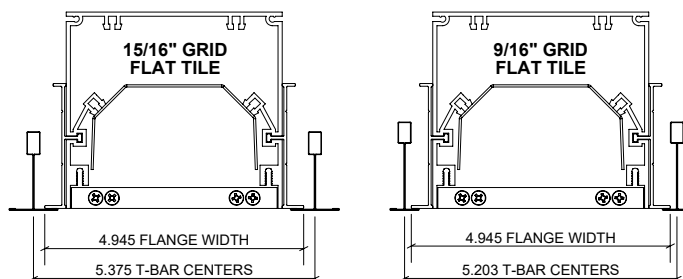
TM  
Trimless Mud-In for 5/8" Drywall



TG15  
15/16" Tegular Grid

TG9  
9/16" Tegular Grid

ST  
Screw Slot



TB15  
15/16" Lay-In Grid

TB9  
9/16" Lay-In Grid



**New Star Lighting**

2225 W Pershing Rd, Chicago, IL 60609  
(773) 847-1400  
www.newstarlighting.com

Specifications and dimensions are subject to change without notice. For additional options and dimensional details, please consult your New Star Lighting representative.

© 2025, New Star Lighting. All rights reserved. Unauthorized duplication or distribution is prohibited.

## PERFORMANCE DATA

Model	Light Distribution	CCT	Lumens per Foot	Efficacy (lm/W)	Input Power (W)
HAL24	Symmetric	4000K	500	95	11
	Symmetric	4000K	1181	95	25
	Asymmetric	3000K	500	85	12
	Asymmetric	3000K	1067	85	25
HAL36	Symmetric	4000K	500	95	16
	Symmetric	4000K	1181	95	37
	Asymmetric	3000K	500	85	18
	Asymmetric	3000K	1067	85	38
HAL48	Symmetric	4000K	500	95	21
	Symmetric	4000K	1181	95	50
	Asymmetric	3000K	500	85	23
	Asymmetric	3000K	1067	85	50
HAL72	Symmetric	4000K	500	95	32
	Symmetric	4000K	1181	95	75
	Asymmetric	3000K	500	85	35
	Asymmetric	3000K	1067	85	75
HAL96	Symmetric	4000K	500	95	42
	Symmetric	4000K	1181	95	99
	Asymmetric	3000K	500	85	47
	Asymmetric	3000K	1067	85	100



### New Star Lighting

2225 W Pershing Rd, Chicago, IL 60609  
(773) 847-1400  
www.newstarlighting.com

Specifications and dimensions are subject to change without notice. For additional options and dimensional details, please consult your New Star Lighting representative.

© 2025, New Star Lighting. All rights reserved. Unauthorized duplication or distribution is prohibited.