

PROJECT: _____
 TYPE: _____
 PRODUCT: _____
 APPROVED BY: _____

PRODUCT FEATURES

- Intended for Public Areas, Corridors, Stairways, Underpasses, Parking Garages, Restrooms, Lobbies, Schools, and more
- Available in 2' - 8' lengths
- Up to 1200 lumens/ft.
- One-piece doorframe with continuous lens retention and tamper-resistant fasteners
- Certified to UL standards by Intertek Testing Laboratory. IP65 rated per IEC60598. NSF2/Non-Food Zone Listed, IK10 Listed per IEC60068-2-75
- This product is Made in America and complies with the Buy American Act (BAA)
- The HAL Series is covered by the New Star Promise



HAL Series

ORDERING INFORMATION

Example: HAL48-FL-500-90-35-AM-D-SYM-90C-UN-DM1



HAL						
Series	Nominal Length* 24 = 2' 36 = 3' 48 = 4' 72 = 6' 96 = 8' <small>*Available in 1' increments. Consult factory for other lengths.</small>	Ceiling Configuration TB9 = 9/16" Lay-In Grid TB15 = 15/16" Lay-In Grid TG9 = 9/16" Tegular Grid TG15 = 15/16" Tegular Grid FL = Flange NFL = No Flange ST = Screw Slot TM = Trimless Mud-In for 5/8" Drywall	Lumen Output* 500 = 500LM/FT-Min 1200 = 1200LM/FT-Max <small>*Outputs between listed min and max are available.</small>	CRI 80 = 80 CRI 90 = 90 CRI	Color Temp. 30 = 3000K 35 = 3500K 40 = 4000K TW1 = Tunable White 2700K to 5000K* TW2 = Tunable White 2700K to 6500K* <small>*Must select TW Driver.</small>	Finish AM = Antimicrobial White* C = Custom** <small>*Standard finish. **Consult factory for NSF.</small>
Outer Lens D = .250 Clear Poly.	Inner Lens SYM = Symmetrical ASY = Asymmetrical	CRI 80C = 80 CRI 90C = 90 CRI	Voltage 12 = 120V 27 = 270V 34 = 347V* UN = Universal (120V-277V) <small>*347V only available with DM1 Drivers.</small>	Driver Type DM1 = 0-10V Dimming to 1% Tunable White Driver*: DALI8 = 2-Channel TW0 = 2-Channel 0-10V <small>*Tunable White Driver requires choice of TW1 or TW2 in Color Temp. column.</small>	Options B(#)= Battery Pack* GTD(1) = Generator transfer device* +E(1) = Emergency section LV3 = Independent Load Dimming LVC** <small>*Available for fixture lengths of 4' or greater **Click here for more information. Provides control of lighting from a pillow speaker, bedside rail or wall switch. Leads are factory labeled.</small>	

SPECIFICATIONS

HOUSING: Extruded aluminum construction with sheet metal endcaps. Closed cell neoprene pad in doorframe.

LENS: Combination of acrylic and/or polycarbonate prismatic inner lens, clear outer lens, maximum thickness 0.25" for durability.

DOORFRAME: Die-formed aluminum doorframe, with antimicrobial white powder-coat finish, secured with tamper-resistant Torx® fasteners. Safety aircraft cable also secures doorframe to housing for easy maintenance.

LED: Available in three color temperatures 3000K, 3500K, and 4000K with maximum 3-step MacAdam variation allowance. Tunable White also available, from 2700K – 5000K or 2700K–6500K. Minimum 50,000 hours with 85% lumen maintenance in a 25°C ambient temperature, compliant with IES LM-80 testing standards.

ELECTRICAL: Standard 120–277VAC 50/60Hz or 347VAC 60Hz electrical input with serviceable constant-current drivers (<10%THD, >0.90 PF). 0–10V Dimming with 1–100% range.

TUNABLE DRIVER OPTIONS:

DALI8 – DALI Type 8 (One DALI Address)

TWO – Two channel 0–10V dimming: one channel for brightness, one channel for CCT

FINISH: Antimicrobial white finish following multi-stage iron phosphate pre-treatment on all exposed room-side surfaces. Custom finishes also available.

INSTALLATION: Recessed Grid, Screw Slot Grid, Drywall Flange, Drywall Flangeless and Mud-In Flange options.

WARRANTY: Five (5) year warranty.

LISTINGS: Fixture is certified to UL standards by Intertek Testing Laboratory. IP65 Rating per IEC 60598. Certified for NSF2 Splash Zone/ Food Zones. Standard CCEA compliance. This product is Buy American and complies with the Buy American Act (BAA).



The High Abuse Linear Series is covered by our New Star Promise.

Our promise means we will repair or replace any of our High Abuse or Vandal-Resistant architectural luminaires when installed according to our instructions for the life of the original installation if the fixture should fail due to physical abuse*.

*Damage caused by gunfire and chemical reactions is not covered by the New Star Promise.



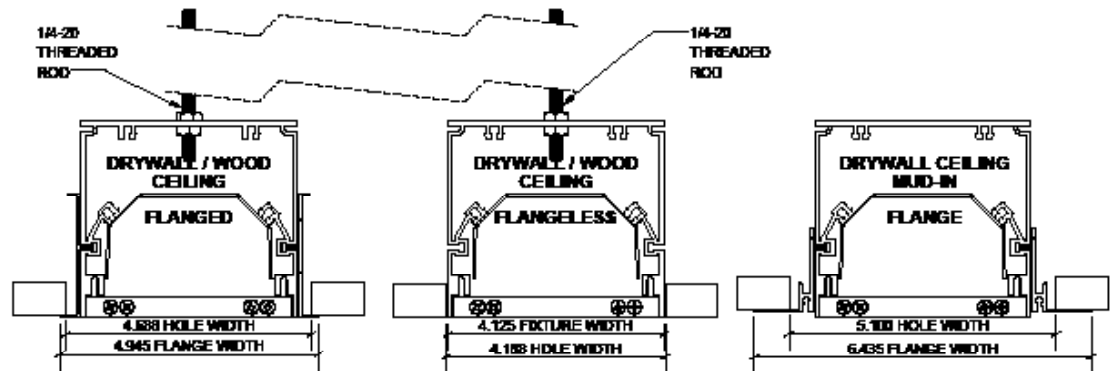
New Star Lighting

2225 W Pershing Rd, Chicago, IL 60609
(773) 847-1400
www.newstarlighting.com

Specifications and dimensions are subject to change without notice. For additional options and dimensional details, please consult your New Star Lighting representative.

© 2025, New Star Lighting. All rights reserved. Unauthorized duplication or distribution is prohibited.

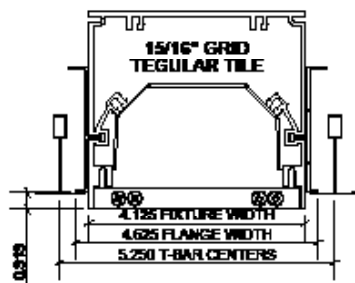
DIMENSIONAL DATA



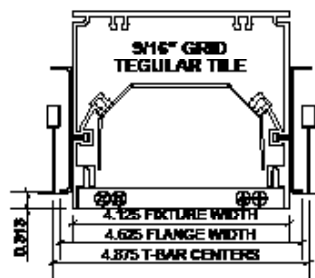
FL
Flange

NFL
No Flange

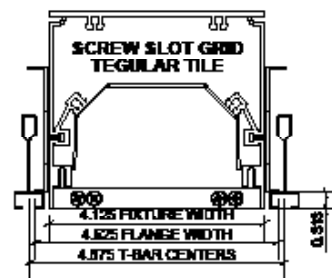
TM
Trimless Mud-In for 5/8" Drywall



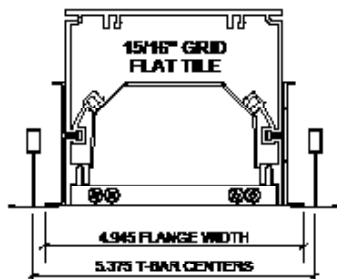
TG15
15/16" Tegular Grid



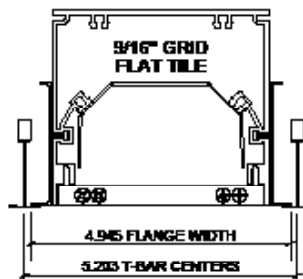
TG9
9/16" Tegular Grid



ST
Screw Slot



TB15
15/16" Lay-In Grid



TB9
9/16" Lay-In Grid



New Star Lighting

2225 W Pershing Rd, Chicago, IL 60609
(773) 847-1400
www.newstarlighting.com

Specifications and dimensions are subject to change without notice. For additional options and dimensional details, please consult your New Star Lighting representative.

© 2025, New Star Lighting. All rights reserved. Unauthorized duplication or distribution is prohibited.

PERFORMANCE DATA

Model	Light Distribution	CCT	Lumens per Foot	Efficacy (lm/W)	Input Power (W)
HAL24	Symmetric	4000K	500	95	11
	Symmetric	4000K	1181	95	25
	Asymmetric	3000K	500	85	12
	Asymmetric	3000K	1067	85	25
HAL36	Symmetric	4000K	500	95	16
	Symmetric	4000K	1181	95	37
	Asymmetric	3000K	500	85	18
	Asymmetric	3000K	1067	85	38
HAL48	Symmetric	4000K	500	95	21
	Symmetric	4000K	1181	95	50
	Asymmetric	3000K	500	85	23
	Asymmetric	3000K	1067	85	50
HAL72	Symmetric	4000K	500	95	32
	Symmetric	4000K	1181	95	75
	Asymmetric	3000K	500	85	35
	Asymmetric	3000K	1067	85	75
HAL96	Symmetric	4000K	500	95	42
	Symmetric	4000K	1181	95	99
	Asymmetric	3000K	500	85	47
	Asymmetric	3000K	1067	85	100



New Star Lighting

2225 W Pershing Rd, Chicago, IL 60609
(773) 847-1400
www.newstarlighting.com

Specifications and dimensions are subject to change without notice. For additional options and dimensional details, please consult your New Star Lighting representative.

© 2025, New Star Lighting. All rights reserved. Unauthorized duplication or distribution is prohibited.