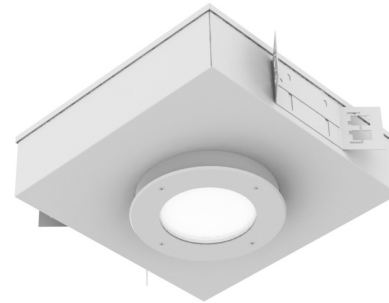


PROJECT: _____
 TYPE: _____
 PRODUCT: _____
 APPROVED BY: _____



DLM Series

PRODUCT FEATURES

- Ligature resistant to meet behavioral health industry standards
- 16-Gauge cold rolled steel housing with an extruded aluminum heat sink
- White antimicrobial powder coat finish (No VOC) on all exposed surfaces
- Optional Tamper-resistant Torx® fasteners
- Suitable for Wet Location, IK10 Listed per IEC 60068-2-75 and IP65 Listed per IEC60598
- Variety of wattages and lumen packages
- This product is Made in America and complies with the Buy American Act (BAA), and the Build America, Buy America Act (BABAA)
- The DuraCare™ StarMed Downlight is covered by the New Star Promise



ORDERING INFORMATION

Example: DLM6-DC-C-L130-D/A-TC16-3-90C-UN-DM1-TH

| DLM 6 | | DC | C | | | | |
|-------------------------------------|----------------------------------|----------------|---------------------------------------|--|--|---|---|
| Series | Aperture 6 = 6 inch ✓ | DC = DuraCare™ | Housing C = 16Ga. CRS Painted ✓ | Lumen Output* L4 = 25W L5 = 37W L6 = 45W L7 = 52W *Subject to change. Performance Data on page 3. | Color Temp. 30 = 3000K 35 = 3500K 40 = 4000K TW1 = Tunable White 2700K to 5000K* TW2 = Tunable White 2700K to 6500K* *See Page 2 to specify system. | Outer Lens D = .250 Clear Polycarbonate ✓ E = .375 Clear Polycarbonate | Inner Lens A = .125 Prismatic Acrylic ✓ B = .125 Prismatic Poly. C = .156 Prismatic Poly. D = .125 White Frosted Poly. E = .156 Prismatic Temp. Glass |
| TC16 | | 3 | 90C | | | | |
| Trim TC16 = 16 Ga. CRS Painted ✓ | Reflector 3 = Low Gloss White | | CRI 90C = 90 CRI | Voltage 12 = 120V 27 = 277V UN = Universal (120V-277V) | Driver DM1 = 0-10V dimming with 1-100% range Tunable White Driver: DALI8 = 1-Channel TWO = 2-Channel 0-10V | Options FZ1 = Fuse (120V) FZ2 = Fuse (277V) EM = Emerg. Batt (remote)* TH = Torx® Head fasteners (with center pin) ✓ *If stored, batteries should be fully rechargeable every six months and kept between 0°C-25°C to maintain optimal battery capacity. | |

✓ Indicates the product configuration meets the published guidelines by the State of New York for behavioral health applications.
 Find out more by visiting the [New York State Office of Mental Health's website](#).



New Star Lighting

2225 W Pershing Rd, Chicago, IL 60609
 (773) 847-1400
www.newstarlighting.com

Specifications and dimensions are subject to change without notice. For additional options and dimensional details, please consult your New Star Lighting representative.

© 2025, New Star Lighting. All rights reserved. Unauthorized duplication or distribution is prohibited.

SPECIFICATIONS

CONSTRUCTION: Sealed housing 16-gauge cold rolled steel with an extruded aluminum heat sink designed for maximum thermal dissipation.

LENS: Prismatic acrylic or white frosted polycarbonate inner lens, diffused with a clear outer lens.

LED: LED module available in three color temperatures 3000K, 3500K, and 4000K with maximum 3-step MacAdam variation allowance. Other color temperatures available, consult factory.

DRIVER: Standard 0-10V dimming with 1-100% range. Rated for through-branch wiring.

TUNABLE DRIVER OPTIONS:

DALI8 – DALI Type 8 (One DALI Address)

TWO – Two channel 0-10V dimming: one channel for brightness, one channel for CCT

FASTENERS: Tamper-resistant Torx® head fasteners. Finish to match trim.

FINISH: White antimicrobial polyester powder coat finish following multi-stage iron phosphate pretreatment on all exposed room-side painting surfaces, unless otherwise specified.

GASKET: Closed cell EPDM and closed cell silicone gaskets prevent air contaminants from entering the fixture.

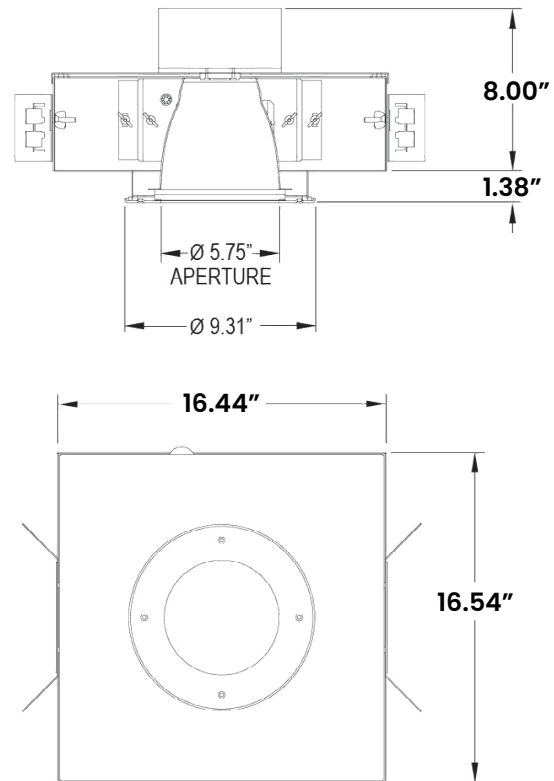
INSTALLATION: Recessed drywall installation.

WARRANTY: New Star Promise.

LABEL: Fixture is certified to UL standards by Intertek Testing Laboratory for non-IC and Wet Location installations (under covered ceiling).

IP65 Listed per IEC60598. IK10 Listed per IEC60068-2-75.

DIMENSIONAL DATA



The DuraCare™ StarMed Downlight is covered by our New Star Promise.

Our promise means we will repair or replace any of our High Abuse or Vandal-Resistant architectural luminaires when installed according to our instructions for the life of the original installation if the fixture should fail due to physical abuse*.

*Damage caused by gunfire and chemical reactions is not covered by the New Star Promise.



New Star Lighting

2225 W Pershing Rd, Chicago, IL 60609
(773) 847-1400
www.newstarlighting.com

Specifications and dimensions are subject to change without notice. For additional options and dimensional details, please consult your New Star Lighting representative.

© 2025, New Star Lighting. All rights reserved. Unauthorized duplication or distribution is prohibited.

PERFORMANCE DATA

*LEDs are frequently updated therefore values may change without notice.

| Model | Output | lum | lm/w | Wattage |
|---------------|--------|------|------|---------|
| DLM6 (90 CRI) | L4 | 1625 | 65 | 25 |
| | L5 | 2220 | 60 | 37 |
| | L6 | 2610 | 58 | 45 |
| | L7 | 2860 | 55 | 52 |



New Star Lighting

2225 W Pershing Rd, Chicago, IL 60609
(773) 847-1400
www.newstarlighting.com

Specifications and dimensions are subject to change without notice. For additional options and dimensional details, please consult your New Star Lighting representative.

© 2025, New Star Lighting. All rights reserved. Unauthorized duplication or distribution is prohibited.