



PROJECT: _____
 TYPE: _____
 PRODUCT: _____
 APPROVED BY: _____

PRODUCT FEATURES

- Ligature-resistant features to support Behavioral Health applications
- Available in a 1x4, 2x2, 2x4
- Provides ambient lighting
- Tamper-resistant Torx® fasteners with center pin reject
- Fixture is certified to UL standards for Wet Location under covered ceiling. IP65 rating per IEC60598. CCEA approved. Meets ISO3/Class 1 Cleanroom standards. IK10 Listed per IEC60068-2-75
- This product is Made in America and complies with the Buy American Act (BAA), and the Build America, Buy America Act (BABAA)
- The DuraCare™ AuraMed Behavioral Health Classic Series is covered by the New Star Promise



AATB Series

ORDERING INFORMATION

Example: AATBR24-DC-HC14/OC-1-HG40-90C-1C-UN-DMI



| AATB | | R | DC | | / | | |
|---|--|--|--|---|--|---|--|
| Series | Mounting | Nominal Size* | DC = DuraCare™ | | Housing | Overlapping Frame* | Outer Lens* |
| | R = Recessed (Grid/Flange) | 14 = 1 x 4 ✓ 22 = 2 x 2 ✓ 24 = 2 x 4 ✓ *Nominal Size. Dimensional Data on Page 2. | | | HC14 = 14Ga. CRS Painted HS14 = 14Ga. SS Brushed HP14 = 14Ga. SS Painted HC16 = 16Ga. CRS Painted ✓ HS16 = 16Ga. SS Brushed ✓ HP16 = 16Ga. SS Painted ✓ HC18 = 18Ga. CRS Painted HS18 = 18Ga. SS Brushed HP18 = 18Ga. SS Painted | OC = CRS Painted ✓ OS = SS Brushed ✓ OP = SS Painted ✓ *Gauge to match housing | 1 = .187 Clear Poly. 2 = .250 Clear Poly. ✓ 3 = .375 Clear Poly. *Inner diffuser is a white poly. |
| Lumen Output* | Color Temp. | CRI | Circuits | Voltage | Driver | Options | Accessory |
| LW = Low MD = Medium HG = High CL = Custom Lumen Output** *Subject to change. Performance Data on page 3. ** Must be specified at time of quote. Must not exceed fixture maximum output. | 30 = 3000K 35 = 3500K 40 = 4000K 50 = 5000K TW1 = Tunable White 2700K to 5000K TW2 = Tunable White 2700K to 6500K | 80C = 80 CRI 90C = 90CRI | 1C = 1 Circuit 2C = 1 Circuits* *Refers to inboard/outboard wiring. N/A with Low(LW) lumen output. | 12 = 120V 27 = 277V UN = Universal (120-277V) | DM = 0-10V dimming with 10-100% range DMI = 0-10V dimming with 1-100% range SD2 = Step Dimming (50-100%)* SD3 = Step Dimming (30-70-100%)* Tunable White Driver*: TW0 = 2 CHANNEL 0-10V TWD = 2 CHANNEL DALI8 *Tunable White Driver requires choice of TW1 or TW2 in Color Temp column. *Allows for Inboard/Outboard Control. | FZ1 = Fuse (120V) FZ2 = Fuse (277V) LN = LED Night Light** *Consult factory for 347V. AATB14 requires separate back box (provided). N/A with DMI. **Must specify with Low (LW) lumen output, N/A with Medium (MD) and High (HG) outputs. Integrated switch allows light levels at 100%, 70%, 40%, and 10% | EL1 = Remote Emerg. Batt. (10W)* EL2 = Remote Emerg. Batt. (20W)* *Provided with test switch on a wall plate unless otherwise specified. Requires unswitched line. |

✓ Indicates the product configuration meets the published guidelines by the State of New York for behavioral health applications. Find out more by visiting the [New York State Office of Mental Health's website](#).



New Star Lighting
 2225 W Pershing Rd, Chicago, IL 60609
 (773) 847-1400
www.newstarlighting.com

Specifications and dimensions are subject to change without notice. For additional options and dimensional details, please consult your New Star Lighting representative.

SPECIFICATIONS

CONSTRUCTION: Cold rolled steel or stainless steel housing available in 14-gauge, 16-gauge or 18-gauge. Overlapping frame available in cold rolled steel or stainless steel. Gauge to match housing. Frame secured to housing via tamper-resistant screws for maximum strength.

LENS: Extruded white polycarbonate inner diffuser with a clear polycarbonate outer frame lens. Frame lens provides a flat wipe-down surface for easy cleaning. Lens secured with exclusive hold-down brackets for additional security.

LED: Available in four color temperatures 3000K, 3500K, 4000K, and 5000K with maximum 3-step MacAdam variation allowance. Other color temperatures available, consult factory. Minimum 80 CRI standard with optional minimum 90 CRI available.

DRIVER: 0-10V dimming available with 10-100% range and 1-100% range. Must specify dimming under options.

Tunable Driver Options:

- TWO** = 2 CHANNEL 0-10V one channel for brightness, one channel for CCT
- TWD** = 2 CHANNEL DALI8 one channel for brightness, one channel for CCT

FASTENERS: Tamper-resistant Torx® head fasteners.

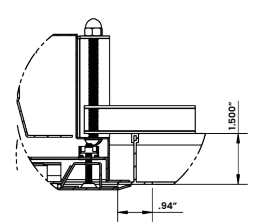
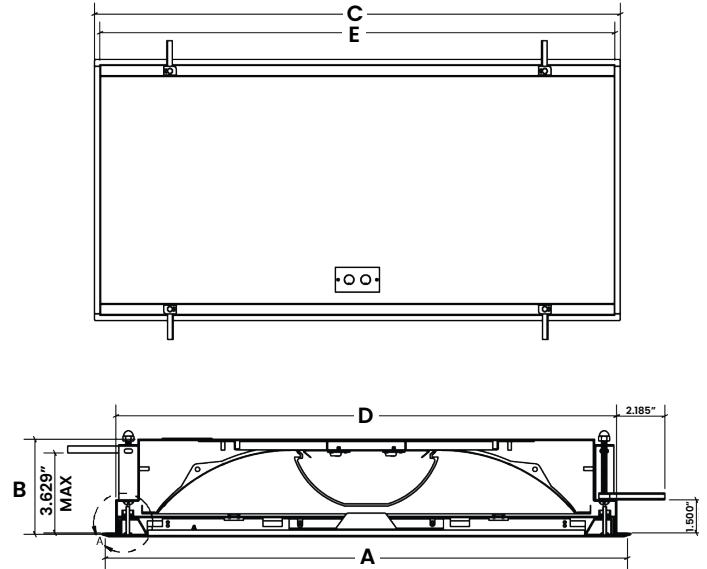
FINISH: Matte white antimicrobial polyester powder coat finish on exposed surfaces following multistage iron phosphosphate pre-treatment

GASKET: Closed cell EPDM and closed cell silicone gaskets prevent air contaminations from entering the fixture. Gasketing seals lens to doorframe and doorframe to housing

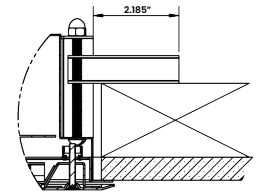
INSTALLATION: Recessed mounting accommodates Grid and Flange installations. Recessed fixtures will be supplied with adjustable swing arms that can be used for Flange applications or taped to the side for Grid applications. Recessed install compatible with 1-1/2" and 15/16" Grid systems. Mounting for custom ceilings available, consult factory.

LABEL: Fixture is certified to UL standards by Intertek Testing Laboratory for Wet Locations. IP65 rating per IEC60598. CCEA approved. IK10 Listed per IEC60068-2-75. This product is Made in America and complies with the Buy American Act (BAA), and the Build America, Buy America Act (BABAA).

DIMENSIONAL DATA



AATR (W/OC FRAME) RECESSED GRID



AATR (W/OC FRAME) RECESSED FLANGE RECOMMENDED CEILING CUT OUTS:

AATB (W/OC FRAME) RECESSED GRID

AATB (W/OC FRAME) RECESSED FLANGE RECOMMENDED CEILING CUT OUTS:

- AATB14:** 10.88" X 46.88"
- AATB22:** 22.88" X 22.88"
- AATB24:** 22.88" X 46.88"



The DuraCare™ AuraMed Behavioral Health Classic Series is covered by our New Star Promise.

Our promise means we will repair or replace any of our High Abuse or Vandal Resistant architectural luminaires when installed according to our instructions for the life of the original installation if the fixture should fail due to physical abuse.*

*Exclusions to the New Star Promise are gunfire and chemical reactions

| | FLANGE WIDTH | DEPTH | FLANGE LENGTH | HOUSING WIDTH | HOUSING LENGTH |
|---------------|--------------|----------|---------------|---------------|----------------|
| MODEL | A | B | C | D | E |
| AATB14 | 11.69" | 4.31" | 47.69" | 10.71" | 46.71" |
| AATB22 | 23.69" | 4.31" | 23.69" | 22.71" | 22.71" |
| AATB24 | 23.69" | 4.31" | 47.69" | 22.71" | 46.71" |

PERFORMANCE DATA

*Data is with 80 CRI chip. LEDs are frequently updated therefore values may change without notice.

| MODEL | OUTPUT | COLOR TEMP. | LUMENS DELIVERED | EFFICACY (lm/w) | INPUT POWER (W) |
|--------|-------------|-------------|------------------|-----------------|-----------------|
| AATB14 | LW = Low | 3000K | 5700 | 114 | 50 |
| | | 3500K | 5950 | 119 | 50 |
| | | 4000K | 6100 | 122 | 50 |
| | | 5000K | 6250 | 125 | 50 |
| | MD = Medium | 3000K | 8175 | 109 | 75 |
| | | 3500K | 8550 | 114 | 75 |
| | | 4000K | 8775 | 117 | 75 |
| | | 5000K | 9000 | 120 | 75 |
| | HG = High | 3000K | 11100 | 111 | 100 |
| | | 3500K | 11600 | 116 | 100 |
| | | 4000K | 11900 | 119 | 100 |
| | | 5000K | 12200 | 122 | 100 |
| AATB22 | LW = Low | 3000K | 2550 | 102 | 25 |
| | | 3500K | 2675 | 107 | 25 |
| | | 4000K | 2750 | 110 | 25 |
| | | 5000K | 2825 | 113 | 25 |
| | MD = Medium | 3000K | 3800 | 100 | 38 |
| | | 3500K | 3990 | 105 | 38 |
| | | 4000K | 4100 | 108 | 38 |
| | | 5000K | 4220 | 111 | 38 |
| | HG = High | 3000K | 4900 | 98 | 50 |
| | | 3500K | 5150 | 103 | 50 |
| | | 4000K | 5300 | 106 | 50 |
| | | 5000K | 5450 | 109 | 50 |
| AATB24 | LW = Low | 3000K | 5700 | 114 | 50 |
| | | 3500K | 5950 | 119 | 50 |
| | | 4000K | 6100 | 122 | 50 |
| | | 5000K | 6250 | 125 | 50 |
| | MD = Medium | 3000K | 8175 | 109 | 75 |
| | | 3500K | 8550 | 114 | 75 |
| | | 4000K | 8775 | 117 | 75 |
| | | 5000K | 9000 | 120 | 75 |
| | HG = High | 3000K | 11100 | 111 | 100 |
| | | 3500K | 11600 | 116 | 100 |
| | | 4000K | 11900 | 119 | 100 |
| | | 5000K | 12200 | 122 | 100 |

