



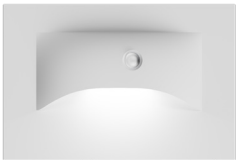
PROJECT: _____
TYPE: _____
PRODUCT: _____
APPROVED BY: _____

PRODUCT FEATURES

- Ligature-resistant for Behavioral Health applications
- Field-adjustable LED CCT: Amber (585nm-595nm), White (2700K-5000K), Blue (469nm-480nm), or Red (620nm-630nm)
- 90-degree cut-off obstructs light trespass
- Built for durability; diecast faceplate with polycarbonate lens
- Selectable Sensor with settings for Photo/Motion/Off (can be turned on or off during installation)
- 0-10V Dim adjusted light level
- Installs to a standard J-Box (by others)
- IK10 listed per IEC60068, IP64 rated per IEC60598, NSF2 Splash/Non-Food Zone listed



DCSLR-V1



DCSLR-H1



ORDERING INFORMATION

Example: DCSLR-V1-CCT-BLK-UN-TWB

DCSLR				UN	
Series	Faceplate Style V1 = Vertical H1 = Horizontal	Color Temperature* CCT = White LED (2700K-5000K) CCT2 = Amber/Red/Blue *Housing comes in either white CCT field selectable options or color (amber, red or blue) field selectable options	Finish* blank = Standard White ALM = Almond (RAL 9001) ARG = Argento (RAL 7035) BLK = Black BL = Blue (RAL 5009) LB = Light Blue (RAL 6034) LIC = Lilac (RAL 4009) PG = Pistachio Green (RAL 6024) CC = Custom RAL Color** *Color swatches on Page 3.	Voltage UN = Universal (120V-277V)	Accessories TWB = Adjustable thru-wall box with hangars (requires two steplights per thru-wall junction box)



SPECIFICATIONS

CONSTRUCTION: ADA-compliant. Ligature-resistant, diecast aluminum faceplate and reflector.

LENS: UV-Stabilized, injection-molded polycarbonate.

LED: Available in field-selectable White LEDs (2700K-5000K) at 80 CRI, or field-selectable colors: Amber (585-595nm), Red (620-630nm), Blue (469-480nm). Minimum 30,000h with 70% of lumen maintenance in 25°C ambient temperature environment, in compliance with IES LM-70 testing measurements.

ELECTRICAL: 120-277VAC, 50-60HZ, input wattage ~1W, power factor >0.9. Lumens: 15lm. 0-10V Dimming.

PHOTO CONTROL OPTION: Control circuit can be pre-set with four sensing modes: ON, Photo sensing (PS), PIR sensing, PIR + PS sensing. Delay time for PIR and PIR+PS modes is 1 minute (if no movement, then auto shut off after 1 minute). Environment light sensing: <80 lux LED ON & >300 lux LED OFF.

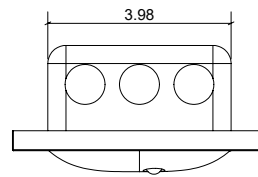
FINISH: Matte white antimicrobial powdercoat finish following multi-stage iron phosphate pre-treatment. Black, Ivory and custom finishes optional.

INSTALLATION: Backplate installs to a single-gang j-box (by others). Through-wall accessory housing also available for shared walls.

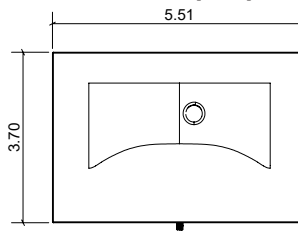
LABEL: IK10 listed per IEC60068*, IP64 rated per IEC60598, NSF2 Splash/Non-Food Zone listed.

*IK10 pisting requires security caulk to be applied upon installation.

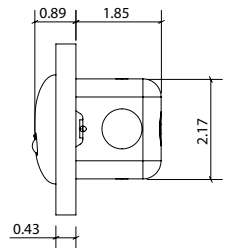
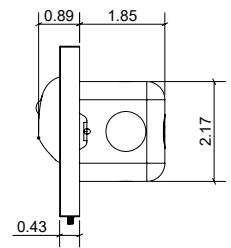
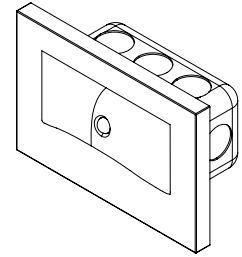
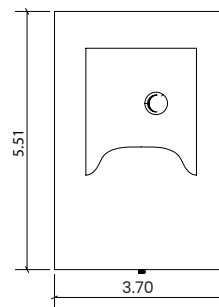
DIMENSIONAL DATA



Horizontal (HO)

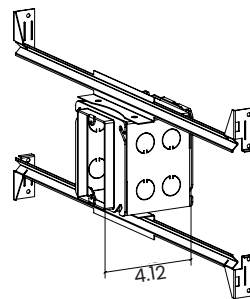


Vertical (VO)



ACCESSORIES (OPT.)

Through Wall Option



The DuraCare™ Rectangle Steplight Series is covered by our New Star Promise.

Our promise means we will repair or replace any of our High Abuse or Vandal Resistant architectural luminaires when installed according to our instructions for the life of the original installation if the fixture should fail due to physical abuse.*

*Exclusions to the New Star Promise are gunfire and chemical reaction



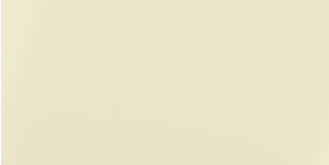




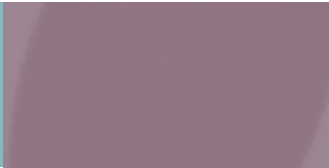
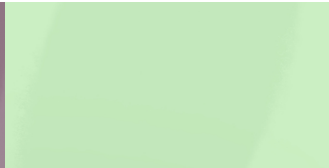

New Star Lighting

2225 W Pershing Rd, Chicago, IL 60609
(773) 847-1400
www.newstarlighting.com

Specifications and dimensions are subject to change without notice. For additional options and dimensional details, please consult your New Star Lighting representative.

© 2025, New Star Lighting. All rights reserved. Unauthorized duplication or distribution is prohibited.

FINISHES

Almond (RAL 9001) (ALM) 138/15003	Argento (RAL 7035) (ARG) 138/90470	Blue (RAL 5005) (BL) 149/47310	White (blank)
			
Light Blue (RAL 5024) (LB) 138/50034	Lilac (RAL 4009) (LIC) 149/34740	Pistachio Green (RAL 6024) (PG) 230/51120	Black (BLK)
			

PERFORMANCE DATA

