

PROJECT: \_\_\_\_\_

TYPE: \_\_\_\_\_

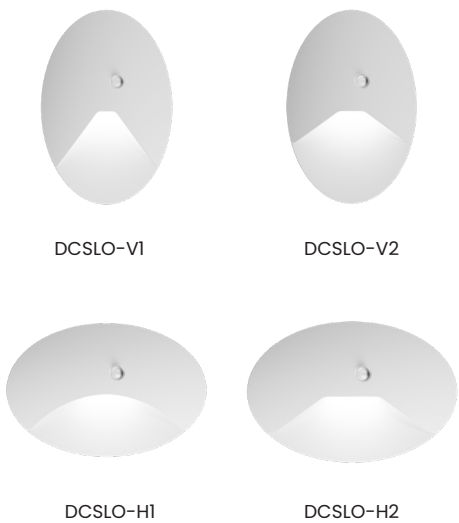
PRODUCT: \_\_\_\_\_

APPROVED BY: \_\_\_\_\_



PRODUCT FEATURES

- Ligature-resistant for Behavioral Health applications
- Field-adjustable LED CCT: Amber (585nm-595nm), White (2700K-5000K), Blue (469nm-480nm), or Red (620nm-630nm)
- 90-degree cut-off obstructs light trespass
- Built for durability; diecast faceplate with polycarbonate lens
- Selectable Sensor with settings for Photo/Motion/Off (can be turned on or off during installation)
- 0-10V Dim adjusted light level
- Installs to a standard J-Box (by others)
- IK10 listed per IEC60068, IP64 rated per IEC60598, NSF2 Splash/Non-Food Zone listed



ORDERING INFORMATION

Example: DCSLO-V1-W-CCT-UN-TWB



DCSLO				UN	
Series	Faceplate Style V1 = Vertical V1 V2 = Vertical V2 H1 = Horizontal H1 H2 = Horizontal H2	Color Temperature* CCT = White LED (2700K-5000K) CCT2 = Amber/Red/Blue  *Housing comes in either white CCT field selectable options or color (amber, red or blue) field selectable options	Finish* BLANK = Standard White ALM = Almond ARG = Argento BLK = Black BL = Blue (RAL 5009) LB = Light Blue (RAL 6034) LIC = Lilac (RAL 4009) PG = Pistachio Green CC = Custom RAL Color**  *Color swatches on Page 3.	Voltage UN = Universal (120V-277V)	Accessories TWB = Adjustable thru-wall box with hangars (requires two steplights per thru-wall junction box)

## SPECIFICATIONS

**CONSTRUCTION:** ADA-compliant. Ligature-resistant, diecast aluminum faceplate and reflector.

**LENS:** UV-Stabilized, injection-molded polycarbonate.

**LED:** Available in field-selectable White LEDs (2700K - 5000K) at 80 CRI, or field-selectable colors: Amber (585~595nm), Red (620~630nm), Blue (469~480nm). Minimum 30,000h with 70% of lumen maintenance in 25°C ambient temperature environment, in compliance with IES LM-70 testing measurements.

**ELECTRICAL:** 120-277VAC, 50-60HZ, input wattage ~1W, power factor >0.9. Lumens: 15lm. 0-10V Dimming.

**PHOTO CONTROL OPTION:** Control circuit can be pre-set with four sensing modes: ON, Photo sensing (PS), PIR sensing, PIR + PS sensing. Delay time for PIR and PIR+PS modes is 1 minute (if no movement, then auto shut off after 1 minute). Environment light sensing: <80 lux LED ON & >300 lux LED OFF.

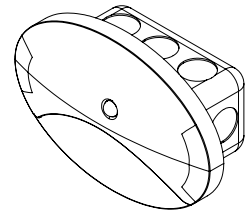
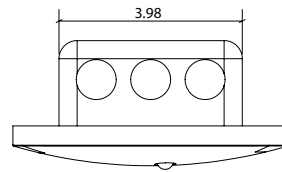
**FINISH:** Matte white antimicrobial powdercoat finish following multi-stage iron phosphate pre-treatment. Black, Ivory and custom finishes optional.

**INSTALLATION:** Backplate installs to a single-gang j-box (by others). Through-wall accessory housing also available for shared walls.

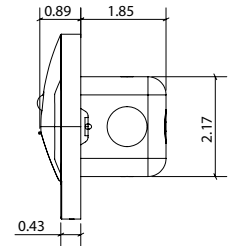
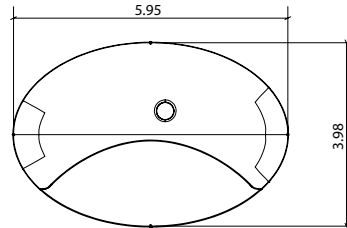
**LABEL:** IK10 listed per IEC60068\*, IP64 rated per IEC60598, NSF2 Splash/Non-Food Zone listed.

\*IK10 pisting requires security caulk to be applied upon installation.

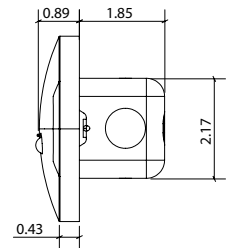
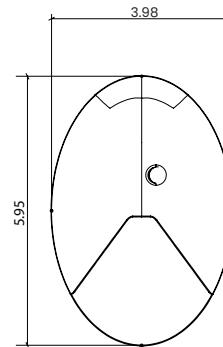
## DIMENSIONAL DATA



### Horizontal (HO)

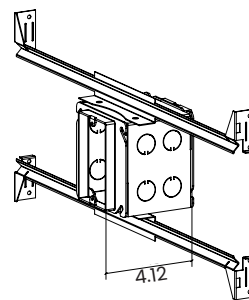


### Vertical (VO)



## ACCESSORIES (OPT.)

### Through Wall Option

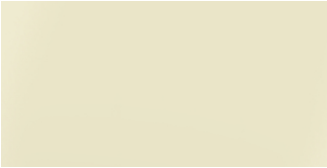


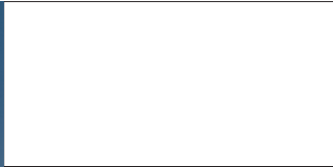

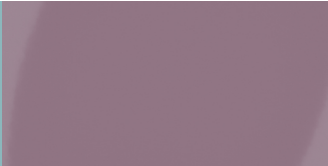
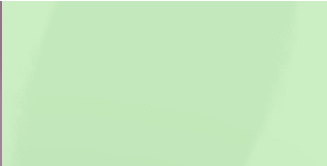



The DuraCare™ Oval Steplight Series is covered by our New Star Promise.

Our promise means we will repair or replace any of our High Abuse or Vandal Resistant architectural luminaires when installed according to our instructions for the life of the original installation if the fixture should fail due to physical abuse.\*

\*Exclusions to the New Star Promise are gunfire and chemical reaction

FINISHES

<b>Almond</b> (ALM) 138/15003	<b>Argento</b> (ARG) 138/90470	<b>Blue</b> (BL) 149/47310	<b>White</b> (Blank)
			
<b>Light Blue</b> (LB) 138/50034	<b>Lilac</b> (LIC) 149/34740	<b>Pistachio Green</b> (PG) 230/51120	<b>Black</b> (BLK)
			

PERFORMANCE DATA

