



PROJECT: _____
 TYPE: _____
 PRODUCT: _____
 APPROVED BY: _____

PRODUCT FEATURES

- Ligature-resistant design intended for behavioral health applications
- Up to 1125 lumens per foot with custom tuning of outputs in provided in Symmetric and Asymmetric Wall wash distributions
- Available in 2'-8' lengths in 1' increments with optional end mount thru wiring for flush, end-to-end mounting
- Extruded Aluminum housing and one piece, beveled fit aluminum door features continuous lens retention, integrated close cell gasketing and secured via tamper resistant Torx head fasteners
- Certified to UL standards by Intertek Testing Laboratory. IP65 rated per IEC60598. NSF2/Non-Food Zone Listed, IK10 Listed per IEC60068-2-75. IC-Rated housing.
- This product is Made in America and complies with the Buy American Act (BAA), and the Build America, Buy America Act (BABAA)



DCL Series

ORDERING INFORMATION

Example: DCL48-FL-500-35-90C-AM-D-ASY-UN-DMI



DCL						
Series	Nominal Length* 24 = 2' 36 = 3' 48 = 4' 72 = 6' 96 = 8'	Ceiling Configuration FL = Flange	Lumen Output 500 = 500LM/FT-Min 750 = 750LM/FT 1125 = 1125LM/FT-Max CL = Custom Lumens*	Color Temp. 30 = 3000K 35 = 3500K 40 = 4000K RGBW/30 = RGB + 3000K* RGBW/40 = RGB + 4000K* * Must use with DMX Driver Tunable White* TW1 = 2700K to 5000K TW2 = 2700K to 6500K *Must specify Tunable White Driver.	CRI 80C = 80 CRI 90C = 90 CRI	Finish AM = Antimicrobial White C = Custom Color* *RAL number required.
	*Available in 1' increments. Consult factory for other lengths.		*Outputs between Min. and Max. available. Must be specified at time of quote. Must not exceed fixture maximum output.			

D				
Outer Lens D = .250 Clear Poly.* *Asymmetric distribution supplied with .187 clear polycarbonate lens.	Inner Lens (Diffuse Optical Film) SYM = Symmetric ASY = Asymmetric Wall Wash	Voltage 12 = 120V 27 = 270V 34 = 347V* UN = Universal (120V-277V) *347V only available with DMI Drivers.	Driver Type DMI = 0-10V Dimming with 1-100% range DMT = 0-10V & TRIAC/ELV* *Must specify with 120V. RGBW Driver DMX = DMX Driver** **The DMX driver is compatible for RGBW options Tunable White Driver* DALI8 = 2-Channel DALI Type 8 with 1-100% TW0 = 2-Channel 0-10V *Tunable White Driver requires choice of TW1 or TW2 in Color Temp column.	Options FZ1 = Fuse (120V) FZ2 = Fuse (277V) CP = Chicago Plenum Rated B(#) = 10 watt Battery Pack with test switch* GTD(1) = Generator transfer device* WM = Wall Mount RMM = Row Mount Middle Feed Fixture** RME = Row Mount End Feed Left Fixture*** *Available for fixture lengths of 4' or greater. **Flange is removed from both ends of fixture, refer to drawing on Page 2. ***if ASY is specified, one flange is removed. Adjust door mounting to direct asymmetric beam as required.

SPECIFICATIONS

HOUSING: Extruded aluminum construction with sheet metal endcaps. Closed cell neoprene pad in doorframe.

LENS: Clear polycarbonate outer lens with inner optical diffusion lens, providing either asymmetric or symmetric distribution.

DOORFRAME: Die-formed aluminum doorframe, with antimicrobial white powder-coat finish, secured with tamper-resistant Torx® fasteners. Safety aircraft cable also secures doorframe to housing for easy maintenance.

LED: Available in three color temperatures 3000K, 3500K, and 4000K with maximum 3-step MacAdam variation allowance. Tunable White and RGBW Options available. Minimum 50,000 hours with 85% lumen maintenance in a 25°C ambient temperature environment, compliant with IES LM-80 testing standards.

ELECTRICAL: Standard 120-277VAC 50/60Hz or 347VAC 60Hz electrical input with serviceable constant-current drivers (<10%THD, >0.90 PF). 0-10V Dimming with 1-100% range.

TUNABLE DRIVER OPTIONS:

- DALI8** - DALI Type 8 (One DALI Address)
- TWO** - Two channel 0-10V dimming: one channel for brightness, one channel for CCT

FINISH: Antimicrobial white finish following multi-stage iron phosphate pre-treatment on all exposed room-side surfaces. Custom finishes also available.

INSTALLATION: Recessed Grid, Screw Slot Grid, Drywall Flange, Drywall Flangeless and Mud-In Flange options.

WARRANTY: Five (5) year warranty.

LISTINGS: Fixture is certified to UL standards by Intertek Testing Laboratory. IP65 Rating per IEC6598. Certified for NSF2 Splash Zone/ Non-Food Zones. IC Rated. Standard CCEA compliance. This product is Made in America and complies with the Buy American Act (BAA).



The DuraCare™ Linear Series is covered by our New Star Promise.

Our promise means we will repair or replace any of our High Abuse or Vandal-Resistant architectural luminaires when installed according to our instructions for the life of the original installation if the fixture should fail due to physical abuse*.

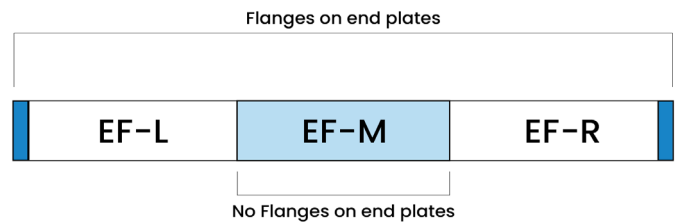
*Damage caused by gunfire and chemical reactions is not covered by the New Star Promise.

DIMENSIONAL DATA

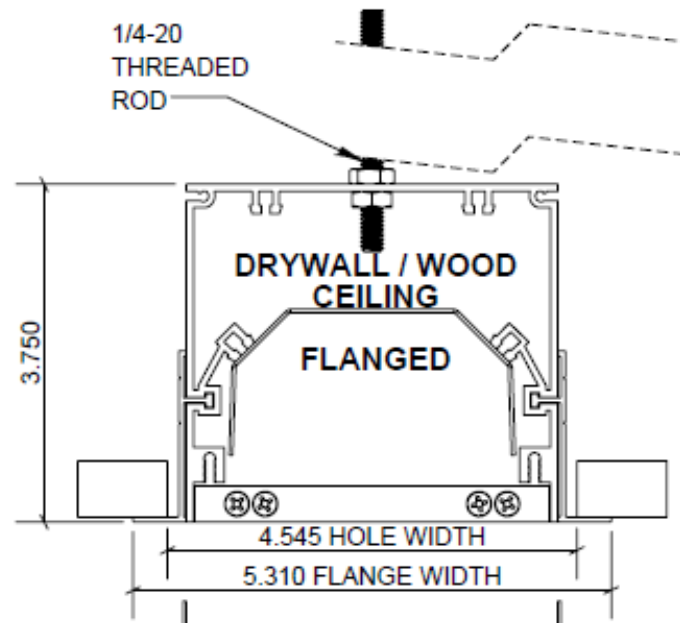
		Fixture Length				
		2'	3'	4'	6'	8'
		(24")	(36")	(48")	(72")	(96")
Mounting	ST	23.875	35.87	47.87	71.87	95.87
	TB9	23.87	35.87	47.87	71.87	95.87
	TB15	23.87	35.87	47.87	71.87	95.87
	TG9	23.87	35.87	47.87	71.87	95.87
	TG15	23.5	35.5	47.5	71.5	95.5
	NFL/TM	23.87	35.87	47.87	71.87	95.87

*Additional dimensional information on page 3

END FEED CONFIGURATION



MOUNTING DATA



PERFORMANCE DATA*

*Data is based on testing at 4000K.

MODEL	DISTRIBUTION	LUMENS PER FOOT	EFFICACY (lm/w)	INPUT POWER (w)
DCL24	SYMMETRIC	500	90	11
		750	90	16
		1125	90	25
	ASYMMETRIC	500	88	11
		750	88	17
		1125	88	25
DCL36	SYMMETRIC	500	90	16
		750	90	24
		1125	90	37
	ASYMMETRIC	500	88	17
		750	88	26
		1125	88	38
DCL48	SYMMETRIC	500	90	22
		750	90	32
		1125	90	50
	ASYMMETRIC	500	88	22
		750	88	34
		1125	88	50
DCL72	SYMMETRIC	500	90	33
		750	90	49
		1125	90	75
	ASYMMETRIC	500	88	34
		750	88	50
		1125	88	75
DCL96	SYMMETRIC	500	90	44
		750	90	65
		1125	90	99
	ASYMMETRIC	500	88	45
		750	88	67
		1125	88	100

MULTIPLIERS

CRI	MULTIPLIER
80 CRI	1
90 CRI	0.95

CCT	MULTIPLIER
3000K	0.95
3500K	0.98

PHOTOMETRIC CURVES

