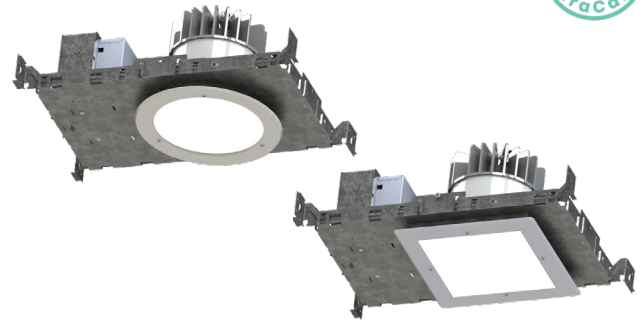


PROJECT: \_\_\_\_\_  
 TYPE: \_\_\_\_\_  
 PRODUCT: \_\_\_\_\_  
 APPROVED BY: \_\_\_\_\_



DCDL SERIES

## PRODUCT FEATURES

- Ligature-resistant features to support Behavioral Health applications
- 4" and 6" sealed recessed downlight, round or square aperture options
- Suitable for non-IC and wet location installations, IK10 listed per IEC60068-2-75: 2014, and IP65 rated per IEC60598
- Variety of wattages and lumen packages, up to 3750lm at 43W (6")
- This product is Made in America and complies with Buy American Act (BAA)
- The DCDL Series is covered by the New Star Promise

## ORDERING INFORMATION

Example: DCDL4R-LW50-90C-F-A-1-34-DM1



DCDL							F
Series	Aperture 4 = 4 inch 6 = 6 inch	Shape R = Round S = Square	Lumen Output* LW = Low SD = Standard MD = Medium HG = High  *Specify desired lumens. Subject to change. **Higher lumen packages for 6" only. Subject to change. Performance data on page 3.	Color Temp. 27 = 2700K 30 = 3000K 35 = 3500K 40 = 4000K 50 = 5000K  Tunable White TW1 = 2700K to 5000K TW2 = 2700K to 6500K	AMB = Amber (585-595nm) BLU = Blue (470nm) RGBW/30 = RGB + 3000K* RGBW/40 = RGB + 4000K* * Must use with DMX Driver	CRI 80C = 80 CRI 90C = 90 CRI	Trim F = Flange

Trim Finish	Flush Lens (Tamper Resistant lens)	Voltage	Driver Type	Options
A = .080 Alum. Painted* B = 18Ga. CRS Painted C = 18Ga. 304 Brushed** D = 18 Ga. SS Painted***  *Antimicrobial standard **Additional fees may apply. Consult factory for details.	1 = .125 Clear Polycarbonate 2 = .250" Clear Polycarbonate	12 = 120V 27 = 277V 34 = 347V	DM1 = 0-10V Dimming with 1-100% range DMT = 0-10V & TRIAC/ELV*  *120V if requesting DMT option.  RGBW Driver* DMX = DMX Driver  *The DMX driver is compatible for RGBW options  Tunable White Driver+ TW0 = 2-Channel 0-10V DALI8 DALI8 = 1-Channel Dali8 +Tunable White Driver requires choice of TW1 or TW2 in Color Temp column.	FZ1 = Fuse (120V) FZ2 = Fuse (277V) EM = Emerg. Battery (Remote)* W = Wing Bracket  *If stored, batteries should be fully recharged every six months and kept between 0°C-25°C to maintain optimal battery capacity. CA Title 20 compliant with remote test switch.



**New Star Lighting**

2225 W Pershing Rd, Chicago, IL 60609  
 (773) 847-1400  
[www.newstarlighting.com](http://www.newstarlighting.com)

Specifications and dimensions are subject to change without notice. For additional options and dimensional details, please consult your New Star Lighting representative.

## SPECIFICATIONS

**HEAT SINK:** Custom diecast aluminum heat sink design for maximum thermal dissipation.

**FRAME-IN KIT:** 20-gauge die-formed, galvanized steel. Vertically adjustable collar accommodates ceiling thicknesses up to 1.25", adjustable post-installation. telescopic hanger bars come as standard. can be installed in either direction (wing bracket can be ordered as option) for installation with wood and steel frame joists and T-grid ceiling systems spaced up to 24" on center. Quick-access junction box accessible post-installation from above and below ceiling. Includes (7) 1/2" knock-outs to allow straight conduit runs.

**TRIM:** IP-rated trim/Light engine incorporates the heat sink, LED module, optics and lower trim. Configurable with an IP64-rated Flush lens trim that is secured to the Frame-In kit with hidden torsion springs or an IP65 Flush lens trim secured with three (Round) or four (Square) tamper resistant (Torx®) captive fasteners. Closed-cell gasketing at ceiling flange. See Trim Ordering Information for available options.

**OPTICAL:** Round or Square aperture. Diffuse Acrylic upper lens. 1/8" clear impact-resistant acrylic or polycarbonate flush lens at ceiling trim. Continuous seal between lens and trim ring. Available with various reflector finishes. See Ordering Information for available options.

**ELECTRICAL:** LED source available in multiple CCT and CRI combinations with a maximum 3-step MacAdam variation allowance. See Trim Ordering Information for available options. 120-277VAC or 347VAC, 50/60Hz electrical input with serviceable constant current driver (<20% THD, >0.90 PF). Minimum 85% driver efficiency. Standard 0-10V dimming with 1-100% range and dim-to-dark capabilities; 0.2mA maximum source current. Optional eldoLED ECoDrive DALI-2/LEDcode2 driver with 1-100% range.

**FINISH:** White antimicrobial polyester powder coat finish following multi-stage iron phosphate pretreatment.

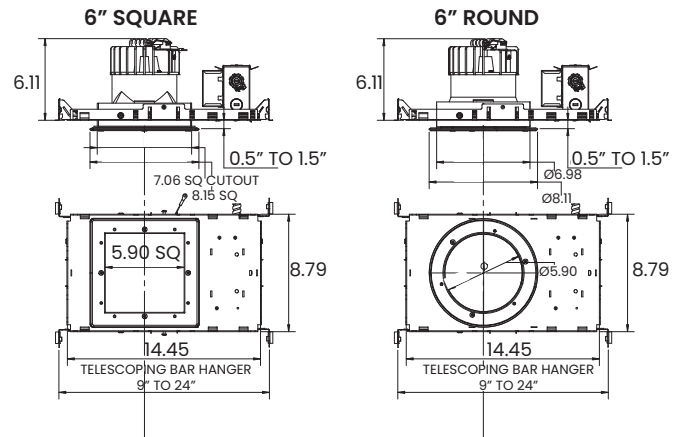
**INSTALLATION:** Recessed drywall and grid installation. Frame adjustable to ceiling thickness 0.5" to 1.25".

**WARRANTY:** New Star Promise.

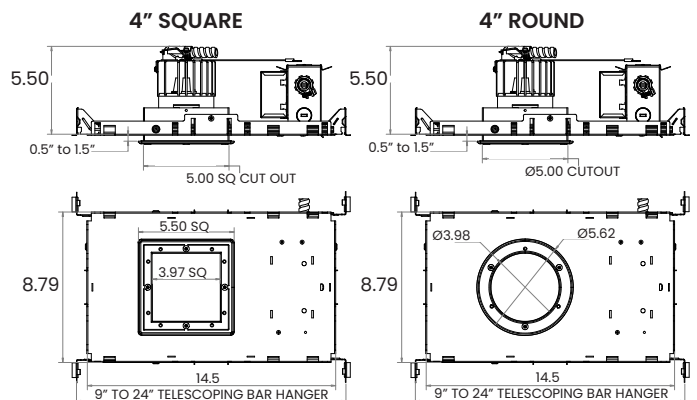
**LABEL:** Fixture is certified to UL standards by Intertek Testing Laboratory for non-IC and wet location installations. IP65 Rating per IEC60598. Certified for NSF2 Splash Zone/ Non-Food Zones. This product is Made in America and complies with Buy American Act (BAA).

## DIMENSIONAL DATA

### 6" DOWNLIGHT



### 4" DOWNLIGHT



The DuraCare™ Behavioral Health Downlight Series is covered by our New Star Promise.

Our promise means we will repair or replace any of our High Abuse or Vandal-Resistant architectural luminaires when installed according to our instructions for the life of the original installation if the fixture should fail due to physical abuse\*.

\*Damage caused by gunfire and chemical reactions is not covered by the New Star Promise.



**New Star Lighting**

2225 W Pershing Rd, Chicago, IL 60609  
(773) 847-1400  
www.newstarlighting.com

Specifications and dimensions are subject to change without notice. For additional options and dimensional details, please consult your New Star Lighting representative.

© 2026, New Star Lighting. All rights reserved. Unauthorized duplication or distribution is prohibited.

**PERFORMANCE DATA**

6IN Downlight Wide beam, 1500lm Engine, 115lm/W at 18.75W

SERIES	SHAPE	LUMENS OUTPUT	CCT	DELIVERED LUMENS	EFFICACY	SYSTEM WATTS
<b>DCDL6</b>	<b>S</b>	LW= LOW	40K	1178	85.4	13.7
		SD= STANDARD	40K	1748	86.1	20.2
		MD= MEDIUM	40K	2296	84.7	27.1
		HG= HIGH	40K	3506	80.2	43.3

SERIES	SHAPE	LUMENS OUTPUT	CCT	DELIVERED LUMENS	EFFICACY	SYSTEM WATTS
<b>DCDL6</b>	<b>R</b>	LW= LOW	40K	1271	92.1	13.8
		SD= STANDARD	40K	1886	92.9	20.3
		MD= MEDIUM	40K	2479	91.5	27.1
		HG= HIGH	40K	3750	85.8	43.7

SERIES	SHAPE	LUMENS OUTPUT	CCT	DELIVERED LUMENS	EFFICACY	SYSTEM WATTS
<b>DCDL4</b>	<b>S</b>	LW= LOW	40K	1128	75	14
		SD= STANDARD	40K	1346	76	18
		MD= MEDIUM	40K	1515	76	21
		HG= HIGH	40K	1907	76	28

SERIES	SHAPE	LUMENS OUTPUT	CCT	DELIVERED LUMENS	EFFICACY	SYSTEM WATTS
<b>DCDL4</b>	<b>R</b>	LW= LOW	40K	1087	73	14
		SD= STANDARD	40K	1375	74	18
		MD= MEDIUM	40K	1580	74	21
		HG= HIGH	40K	1935	69	28



**New Star Lighting**

2225 W Pershing Rd, Chicago, IL 60609  
(773) 847-1400  
www.newstarlighting.com

Specifications and dimensions are subject to change without notice. For additional options and dimensional details, please consult your New Star Lighting representative.

© 2026, New Star Lighting. All rights reserved. Unauthorized duplication or distribution is prohibited.