

PROJECT: _____

TYPE: _____

PRODUCT: _____

APPROVED BY: _____



620 Series

PRODUCT FEATURES

- Ligature resistant to meet behavioral health industry standards
- Ceiling or wall surface mount installation
- Red or green legend, optional single or double face
- Fixture is certified to UL standards. Suitable for Damp Locations. Optional Wet Location
- This product was Made in America and complies with the Buy American Act, and the Build America, Buy America Act

ORDERING INFORMATION

Example: 620-SF-LED-UN-RW



620		LED			
Series	Face SF = Single Face DF = Double Face	Lamp Type LED = LED Module	Voltage 12 = 120V 27 = 277V UN = Universal (120V-277V)	Lettering RW = Red Letters GW = Green Letters	Options EM = Emergency Battery* *If stored, batteries should be fully recharged every six months and kept between 0°C-25°C to maintain optimal battery capacity.

SPECIFICATIONS

HOUSING: 14-Gauge die-formed, seam welded, and ground smooth cold rolled steel housing. Illumination from bottom of the fixture for added wayfinding.

DOORFRAME: 14-Gauge one-piece die-formed cold rolled steel doorframe, secured with Torx® fasteners.

ELECTRICAL: Long life, high powered white LED system illuminates Red or Green legend. 7W. Optional single face or double face.

LEGEND: Lettering 6" high with .750" stroke. Polycarbonate red or green filter panel. Field selectable chevron inserts.

FINISH: White powder coat finish following multi-stage iron phosphate pretreatment.

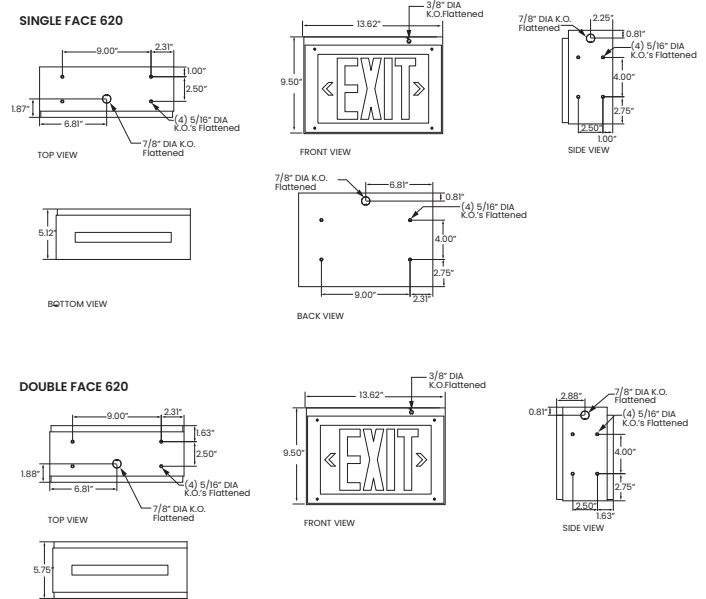
FASTENERS: Tamper-resistant Torx® head fasteners with center pin reject.

INSTALLATION: Ceiling or wall surface mount installation.

WARRANTY: New Star Promise.

LABEL: Fixture is certified to UL standards. Suitable for Damp Locations. Optional Wet Location. This product is Made in America and complies with the Buy American Act, and the Build America, Buy America Act.

DIMENSIONAL DATA



The DuraCare™ 620 Series is covered by our New Star Promise.

Our promise means we will repair or replace any of our High Abuse or Vandal-Resistant architectural luminaires when installed according to our instructions for the life of the original installation if the fixture should fail due to physical abuse*.

*Damage caused by gunfire and chemical reactions is not covered by the New Star Promise.



New Star Lighting

2225 W Pershing Rd, Chicago, IL 60609
(773) 847-1400
www.newstarlighting.com

Specifications and dimensions are subject to change without notice. For additional options and dimensional details, please consult your New Star Lighting representative.

© 2025, New Star Lighting. All rights reserved. Unauthorized duplication or distribution is prohibited.