

PROJECT: _____

TYPE: _____

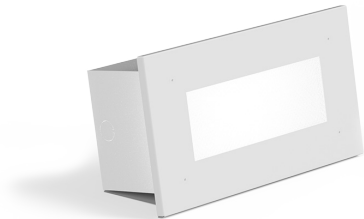
PRODUCT: _____

APPROVED BY: _____



PRODUCT FEATURES

- Ligature resistant to meet behavioral health industry standards
- Recessed Wall Installation
- Suitable for Damp Locations
- This product is Made in America and complies with the Buy American Act (BAA), and the Build America, Buy America Act (BABAA)
- The 53 Series is covered by the New Star Promise.



57S Series

ORDERING INFORMATION

Example: 57S-DC-B-L35-OP-1/B-90C-UN



57S	DC		L		
Series	DC = DuraCare™	Housing B = 14Ga. CRS Painted C = 16Ga. CRS Painted D = 18Ga. CRS Painted E = 14Ga. SS Brushed* F = 20Ga. SS Brushed* *N/A with Antimicrobial Finish (AM)	Lumen Output L = LED	Color Temp. 30 = 3000K 35 = 3500K 40 = 4000K 50 = 5000K LA = Amber	Faceplate OP = Open Face LD = Louver Door* *Lens is installed behind (inside) louver door. N/A with outer lens.

/					
Outer Lens 0 = No lens* A = .125 Clear Poly. B = .156 Clear Poly. 1 = .187 Clear Poly. 2 = .250 Clear Poly. 3 = .375 Clear Poly. 5 = .187 Clear Temp. Glass *Must use with LD louver door option.	Inner Lens B = .125 Prismatic Poly. C = .156 Prismatic Poly.	CRI 80C = 80 CRI 90C = 90 CRI	Voltage 12 = 120V 27 = 277V 34 = 347V UN = Universal (120V-277V)	Options AM = Antimicrobial Finish FZ1 = Fuse (120V) FZ2 = Fuse (277V) AH = Allen Head screws with center reject pin PC = Photocell* *Must specify voltage.	

SPECIFICATIONS

CONSTRUCTION: Choice of die-formed cold rolled steel or brushed stainless steel housing seam welded and ground smooth. Housing is secured with four (2' fixture) or eight (4' fixture) tamper-resistant stainless steel screws to maximize tight seal against mounting surface.

FACE: Open or louver faceplate for corresponding housing gauge.

LENS: As specified – maximum thickness .375" outer lens, .156" inner lens– see ordering information. Please specify prismatic inner lens and a clear outer lens.

LED: Available in four color temperatures: 3500K, 4000K, 5000K, and Amber with maximum 3-step MacAdam variation allowance. Other color temperatures available, consult factory.

ELECTRICAL: 0-10V Dimming available with 1-100% range.

FASTENERS: Tamper-resistant Torx® head fasteners with center pin reject. Allen Head screws with center reject pin optional.

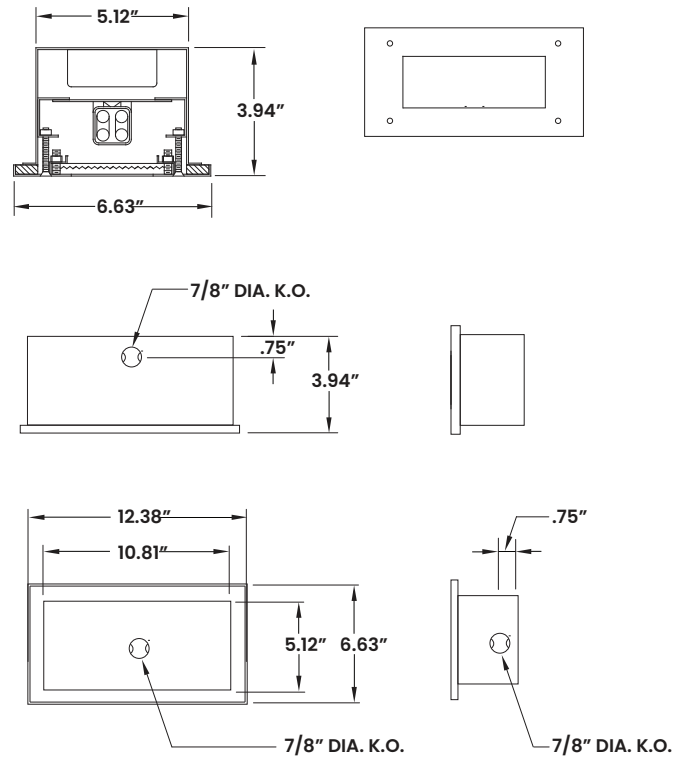
FINISH: White powder polyester coat finish following multistage iron phosphate pre-treatment.

INSTALLATION: Surface wall installation. Hardware by others.

WARRANTY: New Star Promise.

LABEL: Fixture is suitable for Damp Locations.

DIMENSIONAL DATA



The DuraCare™ 57S Series is covered by our New Star Promise.

Our promise means we will repair or replace any of our High Abuse or Vandal-Resistant architectural luminaires when installed according to our instructions for the life of the original installation if the fixture should fail due to physical abuse*.

*Damage caused by gunfire and chemical reactions is not covered by the New Star Promise.



New Star Lighting

2225 W Pershing Rd, Chicago, IL 60609
(773) 847-1400
www.newstarlighting.com

Specifications and dimensions are subject to change without notice. For additional options and dimensional details, please consult your New Star Lighting representative.

© 2025, New Star Lighting. All rights reserved. Unauthorized duplication or distribution is prohibited.

DURACARE™ 57S SERIES



PERFORMANCE DATA

*LEDs are frequently updated therefore values may change without notice.

MODEL	COLOR TEMP.	LUMENS DELIVERED	EFFICACY (lm/W)	INPUT POWER (W)
57S	4000K	325	81	4



New Star Lighting

2225 W Pershing Rd, Chicago, IL 60609
(773) 847-1400
www.newstarlighting.com

Specifications and dimensions are subject to change without notice. For additional options and dimensional details, please consult your New Star Lighting representative.

© 2025, New Star Lighting. All rights reserved. Unauthorized duplication or distribution is prohibited.