

PROJECT: \_\_\_\_\_  
 TYPE: \_\_\_\_\_  
 PRODUCT: \_\_\_\_\_  
 APPROVED BY: \_\_\_\_\_



CCUC-M Series

## PRODUCT FEATURES

- Intended for MRI applications
- Slim profile design (.35" depth) available in five lengths: 11", 18", 23", 36", and 42"
- Standard button switch to adjust CCT: 2700K, 3000K, 3500K, 4000K, and 5000K
- Touch-free ON/OFF and dimming controls for infection control
- Hassle-free surface mount installation with optional linking accessories

## ORDERING INFORMATION

Example: CCUC-M-RM-23/2-11/3-42/1-90-W-DC



CCUC-M			90		DC
<b>Series</b>	<b>Configuration</b> SA = Stand Alone RM = Row Mount	<b>Size / Quantity</b> 11 = 11" / # 18 = 18" / # 23 = 23" / # 36 = 36" / # 42 = 42" / #	<b>CRI</b> 90 = 90 CRI	<b>Finish*</b> W = White BK = Black  *Finishes are standard antimicrobial	<b>Voltage</b> DC = 24VDC Voltage

## REMOTE DRIVER ORDERING INFORMATION

Example: 60WP/1

### Remote Driver/Quantity\*

60WP RDE / # = 60W Remote Driver Enclosure\*\*

80WP RDE / # = 80W Remote Driver Enclosure\*\*

100WP RDE / # = 100W Remote Driver Enclosure\*\*

\*Remote Driver for Hard Wire installation. If Wall Plug is desired, leave blank and order Wall Plug under Accessories.

\*\*120-277V 24VDC Driver, integrated with aluminum J-Box with 24" power cord; (consult factory for other lengths and lead time). See Page 3 for maximum run length and enclosure dimensions.

## ACCESSORY ORDERING INFORMATION

Example: 6LC/2

### Accessories / Quantity

6LC = 6" Linking Connector / #

12LC = 12" Linking Connector / #

24LC = 24" Linking Connector / #

EC = End-to-End Connector / #

30WP = 30W, Wall Plug (120-240V)\*

36WP = 36W, Wall Plug (120-240V)\*

60WP = 60W, Wall Plug (120-240V)\*

\*Wall Plugs take the place of a remote driver & enclosure (RDE). Wall Plugs come with 5' cable length.

# COMPLETECARE™ UNDERCABINET MRI

## SPECIFICATIONS

**CONSTRUCTION:** Extruded aluminum housing. Endcap constructed of ABS material.

**LENS:** Diffused acrylic light guide made of PMMA material provides uniform and diffuse light.

**LED:** Button switch adjustable color temperatures 2700K, 3000K, 3500K, 4000K, and 5000K. Minimum 90 CRI standard. Minimum 30,000h with 70% of lumen maintenance in 25°C ambient temperature, in compliance with IES LM-70 testing measurements.

**POWER SUPPLY:** 24VDC voltage for all lengths; 24W remote wall plug supports a maximum of 123.54" total system run length.

**INPUT VOLTAGE:** 120V, 277V, UNV.

**TOUCHLESS DIMMING:** Touch-free ON/OFF operation via PIR Vacancy Sensor. Position hand over sensor until dimming is activated and light level achieved. Adjustment from lowest to highest light level - and reverse occurs over a 15 second period of time.

**AMBIENT TEMP:** Suitable for -20°C to 45°C ambient temperatures.

**FINISH:** EPA and FDA approved white antimicrobial powder coat finish following multi-stage iron phosphate pre-treatment. Black finish optional.

**INSTALLATION:** Surface installation. Keyhole slots for easy installation. Mounting screws are not provided. 24W Wall plug and end-to-end connectors are standard and shipped with luminaire.

**LABEL:** UL Listed for damp locations.

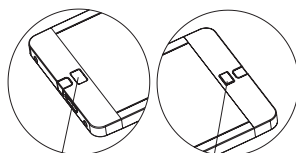
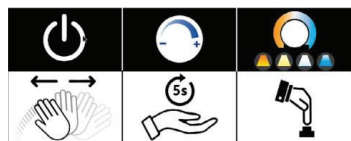
## FUNCTIONALITY

1. Wave hand underneath sensor to turn luminaire ON/OFF.

2. Position hand in within 3" from sensor without moving, until dimming is activated and desired light level has been achieved.

### BUTTON SWITCH:

Switch adjustable CCT: ON > 2700K > 3000K > 3500 > 4000K > 5000K



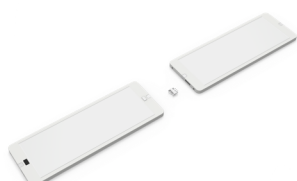
IR Sensor

Button Switch

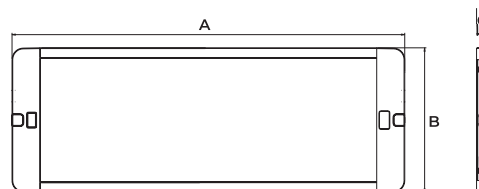
## CONNECTION EXAMPLES

Connection 1: Linking cord

Connection 2: End-to-End Connector



## DIMENSIONAL DATA



MODEL	A	B	C	WATTAGE
CCUC-M11	11.00"	3.94"	0.35"	4W
CCUC-M18	18.00"	3.94"	0.35"	6W
CCUC-M23	22.50"	3.94"	0.35"	8W
CCUC-M36	36.54"	3.94"	0.35"	13W
CCUC-M42	41.18"	3.94"	0.35"	15W

## ACCESSORIES

Interconnect cord set in 6", 12", and 24" lengths:



120-240V Adapter (output 24V 1A) standard:



End-to-End Connector:



**New Star Lighting**

2225 W Pershing Rd, Chicago, IL 60609  
(773) 847-1400  
www.newstarlighting.com

Specifications and dimensions are subject to change without notice. For additional options and dimensional details, please consult your New Star Lighting representative.

© 2025, New Star Lighting. All rights reserved. Unauthorized duplication or distribution is prohibited.

## PERFORMANCE DATA\*

\*According to IES standards, a useful lumen range for undercabinet lighting is typically between 200 and 500 lumens per foot. New Star's Undercabinet luminaires meet IES standards for task lighting.

MODEL	OUTPUT	DELIVERED LUMENS**	INPUT POWER (W)
CCUC-M11	ST = Standard	280	4
CCUC-M18	ST = Standard	420	6
CCUC-M23	ST = Standard	520	8
CCUC-M36	ST = Standard	900	13
CCUC-M42	ST = Standard	1100	15

\*\*LEDs are frequently updated therefore values may change without notice.

## MAXIMUM NUMBER OF CONNECTED UNDERCABINETS

DRIVER	CCUC-M11	CCUC-M18	CCUC-M22	CCUC-M36	CCUC-M43
60W	13	9	6	4	3
80W	18	12	9	6	5
100W	22	15	11	7	6

## MAX RUN LENGTH

In addition to the chart above, if you have a combination of luminaire lengths in a run we can accommodate the following based on remote driver wattage:

60W= 126" any combination length of undercabinet

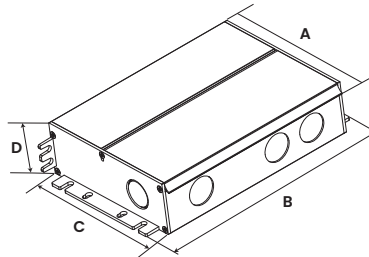
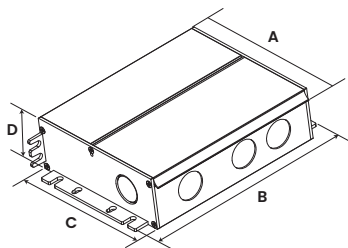
80W= 210" any combination length of undercabinet

100W= 252" any combination length of undercabinet

## REMOTE DRIVER DIMENSIONAL DATA

60W REMOTE DRIVER ENCLOSURE

80W & 100W REMOTE DRIVER ENCLOSURE

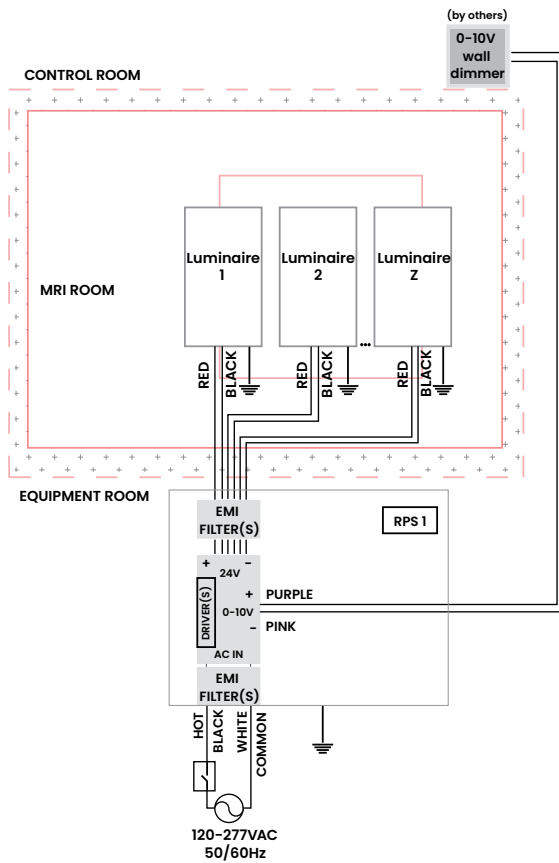


DRIVER	A	B	C	D
60W	4.85"	6.22"	4.7"	1.65"
80W	4.85"	7.4"	4.7"	1.65"
100W	4.85"	7.4"	4.7"	1.65"

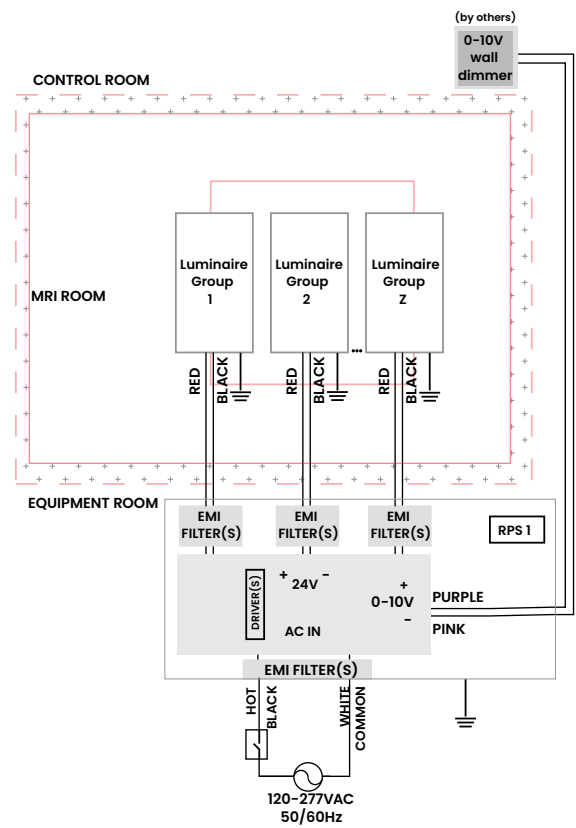
## REMOTE DRIVER DISTANCES

WIRE GAUGE	12AWG	14AWG	16AWG	18AWG	Total LED load
Maximum Distance	20m/65ft	12m/39ft	8m/26ft	5m/16ft	30W 24V
	10m/32ft	6.5m/21ft	4m/13ft	2.5m/8ft	60W 24V
	6m/20ft	3.5m/11ft	2.5m/8ft	1.5m/5ft	100W 24V

## EXAMPLE WIRING



Single connection installation



Multiple connection installation



**New Star Lighting**

2225 W Pershing Rd, Chicago, IL 60609  
(773) 847-1400  
www.newstarlighting.com

Specifications and dimensions are subject to change without notice. For additional options and dimensional details, please consult your New Star Lighting representative.

© 2025, New Star Lighting. All rights reserved. Unauthorized duplication or distribution is prohibited.

## IMPORTANT SAFETY MEASURES

Power supply must be grounded to ensure adequate EMI filtering. Remote Power Supply system must be ordered separately, and installed according to provided instructions.

- This must be installed in accordance with the applicable installation code by a person familiar with the construction and operation of the product and the hazards involved in a MRI environment
- Disconnect power to all circuits before wiring fixture
- Install in accordance with all national, state, and local codes
- Remote Power Supply MUST be grounded
- Failure to install unit on a mechanically sound surface may result in personal injury, physical damage, or potential fire hazard
- Use installation procedures appropriate to a MRI environment and sensitive electronic equipment
- Read all fixture marketing and labels to ensure correct installation of the luminaire
- Supplemental instructions may be located on the luminaire, in addition to the instruction sheet provided by New Star, regarding orientation or mounting restrictions



### New Star Lighting

2225 W Pershing Rd, Chicago, IL 60609  
(773) 847-1400  
[www.newstarlighting.com](http://www.newstarlighting.com)

Specifications and dimensions are subject to change without notice. For additional options and dimensional details, please consult your New Star Lighting representative.

© 2025, New Star Lighting. All rights reserved. Unauthorized duplication or distribution is prohibited.

SPECIFIER ACKNOWLEDGMENT

Contractor acknowledges and understands the requirements of installing New Star Lighting products prior to the installation.  
**Please sign below before New Star Lighting releases your order.**

Signature: \_\_\_\_\_

Date: \_\_\_\_\_

Print Name: \_\_\_\_\_

Project Name: \_\_\_\_\_

----- See next page for MRI installation registration checklist -----

MRI INSTALLATION REGISTRATION CHECKLIST

Customer acknowledges that attached Installation Registration Checklist will be provided to the installer to sign and return to New Star Lighting after the installation is complete.  
Please fill out this form and return to your New Star Lighting Representative.

The warranty for your MRI installation will not go into effect until receipt of this signed registration checklist.

I certify that the lighting installation for the listed MRI suite is completed per the provided installation instructions and to the best of my abilities.

Please check off to denote status:

- Installation instruction sheet for Remote Power Supply is read and followed.
- Remote Power supply is located outside the shielded MRI exam room and grounded.
- All dimming signals wiring is located outside the shielded MRI room.
- Lighting system fully tested (including dimming operation if applicable) while MRI machine is in idle mode.
- Lighting system fully tested (including dimming operation, if applicable) while MRI machine is in scan operation mode with the magnets fully activated.

If any of those steps cannot be completed or you need technical assistance, please contact your New Star Lighting Representative.

Electrical Contractor	Installation site
Name:	Project Name:
Phone:	City / State (Province):
Installation date:	Send the form to your New Star Lighting Representative.
<div></div>	<div></div>
New Star Lighting Representative:	
Date:	
<div></div>	
<div></div>	