

PROJECT: \_\_\_\_\_  
 TYPE: \_\_\_\_\_  
 PRODUCT: \_\_\_\_\_  
 APPROVED BY: \_\_\_\_\_



CCUC-M Series

## PRODUCT FEATURES

- Intended for MRI applications
- Slim profile design (.35" depth) available in five lengths: 11", 18", 23", 36", and 42"
- Standard button switch to adjust CCT: 2700K, 3000K, 3500K, 4000K, and 5000K
- Touch-free ON/OFF and dimming controls for infection control
- Hassle-free surface mount installation with optional linking accessories

## ORDERING INFORMATION



Example: CCUC-M-RM-23/2- 11/3-42/1-90-W-DC

CCUC-M					DC
<b>Series</b>	<b>Configuration</b> SA = Stand Alone* RM = Row Mount**  * Consisting of one master unit. ** Consisting of one master unit and X number of satellite units.	<b>Size / Quantity</b> 11 = 11" / # 18 = 18" / # 23 = 23" / # 36 = 36" / # 42 = 42" / #	<b>CRI</b> 80C = 80 CRI 90C = 90 CRI	<b>Finish*</b> W = White BK = Black  *Finishes are standard antimicrobial	<b>Voltage</b> DC = 24VDC Voltage

## REMOTE DRIVER ORDERING INFORMATION

Example: 60WP/1

### Remote Driver/Quantity\*

60WP RDE / # = 60W Remote Driver Enclosure\*\*

80WP RDE / # = 80W Remote Driver Enclosure\*\*

100WP RDE / # = 100W Remote Driver Enclosure\*\*

\*Remote Driver for Hard Wire installation. If Wall Plug is desired, leave blank and order Wall Plug under Accessories.

\*\*120-277V 24VDC Driver, integrated with aluminum J-Box with 24" power cord; (consult factory for other lengths and lead time). See Page 3 for maximum run length and enclosure dimensions.

## ACCESSORY ORDERING INFORMATION

Example: 6LC/2

### Accessories / Quantity

6LC = 6" Linking Connector / #

12LC = 12" Linking Connector / #

24LC = 24" Linking Connector / #

EC = End-to-End Connector / #

30WP = 30W, Wall Plug (120-240V)\*

36WP = 36W, Wall Plug (120-240V)\*

60WP = 60W, Wall Plug (120-240V)\*

\*Wall Plugs take the place of a remote driver & enclosure (RDE). Wall Plugs come with 5' cable length.

## SPECIFICATIONS

**CONSTRUCTION:** Extruded aluminum housing. Endcap constructed of ABS material.

**LENS:** Diffused acrylic light guide made of PMMA material provides uniform and diffuse light.

**LED:** Button switch adjustable color temperatures 2700K, 3000K, 3500K, 4000K, and 5000K. Minimum 90 CRI standard. Minimum 30,000h with 70% of lumen maintenance in 25°C ambient temperature, in compliance with IES LM-70 testing measurements.

**POWER SUPPLY:** 24VDC voltage for all lengths; 24W remote wall plug supports a maximum of 123.54" total system run length.

**INPUT VOLTAGE:** 120V, 277V, UNV.

**TOUCHLESS DIMMING:** Touch-free ON/OFF operation via PIR Vacancy Sensor. Position hand over sensor until dimming is activated and light level achieved. Adjustment from lowest to highest light level - and reverse occurs over a 15 second period of time.

**AMBIENT TEMP:** Suitable for -20°C to 45°C ambient temperatures.

**FINISH:** EPA and FDA approved white antimicrobial powder coat finish following multi-stage iron phosphate pre-treatment. Black finish optional.

**INSTALLATION:** Surface installation. Keyhole slots for easy installation. Mounting screws are not provided. 24W Wall plug and end-to-end connectors are standard and shipped with luminaire.

**LABEL:** UL Listed for damp locations.

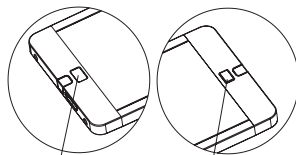
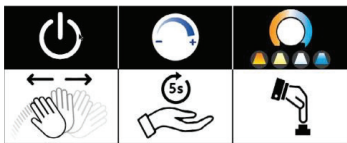
## FUNCTIONALITY

1. Wave hand underneath sensor to turn luminaire ON/OFF.

2. Position hand in within 3" from sensor without moving, until dimming is activated and desired light level has been achieved.

### BUTTON SWITCH:

Switch adjustable CCT: ON > 2700K > 3000K > 3500 > 4000K > 5000K



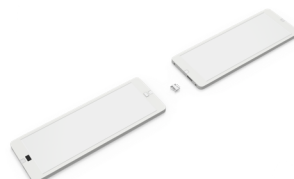
IR Sensor

Button Switch

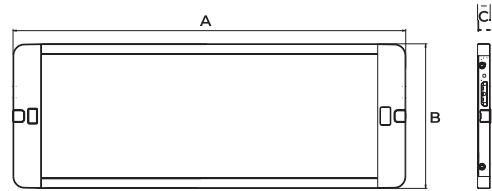
## CONNECTION EXAMPLES

Connection 1: Linking cord

Connection 2: End-to-End Connector



## DIMENSIONAL DATA



MODEL	A	B	C	WATTAGE
CCUC-M11	11.00"	3.94"	0.35"	4W
CCUC-M18	18.00"	3.94"	0.35"	6W
CCUC-M23	22.50"	3.94"	0.35"	8W
CCUC-M36	36.54"	3.94"	0.35"	13W
CCUC-M42	41.18"	3.94"	0.35"	15W

## ACCESSORIES

Interconnect cord set in 6", 12", and 24" lengths:



120-240V Adapter (output 24V 1A) standard:



End-to-End Connector:



**New Star Lighting**

2225 W Pershing Rd, Chicago, IL 60609  
(773) 847-1400  
www.newstarlighting.com

Specifications and dimensions are subject to change without notice. For additional options and dimensional details, please consult your New Star Lighting representative.

© 2026, New Star Lighting. All rights reserved. Unauthorized duplication or distribution is prohibited.

## PERFORMANCE DATA\*

\*According to IES standards, a useful lumen range for undercabinet lighting is typically between 200 and 500 lumens per foot. New Star's Undercabinet luminaires meet IES standards for task lighting.

MODEL	OUTPUT	DELIVERED LUMENS**	INPUT POWER (W)
CCUC-M11	ST = Standard	280	4
CCUC-M18	ST = Standard	420	6
CCUC-M23	ST = Standard	520	8
CCUC-M36	ST = Standard	900	13
CCUC-M42	ST = Standard	1100	15

\*\*LEDs are frequently updated therefore values may change without notice.

## MAXIMUM NUMBER OF CONNECTED UNDERCABINETS

DRIVER	CCUC-M11	CCUC-M18	CCUC-M22	CCUC-M36	CCUC-M43
60W	13	9	6	4	3
80W	18	12	9	6	5
100W	22	15	11	7	6

## MAX RUN LENGTH

In addition to the chart above, if you have a combination of luminaire lengths in a run we can accommodate the following based on remote driver wattage:

60W= 126" any combination length of undercabinet

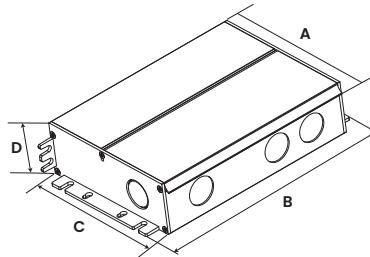
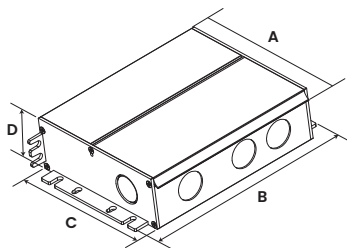
80W= 210" any combination length of undercabinet

100W= 252" any combination length of undercabinet

## REMOTE DRIVER DIMENSIONAL DATA

60W REMOTE DRIVER ENCLOSURE

80W & 100W REMOTE DRIVER ENCLOSURE



DRIVER	A	B	C	D
60W	4.85"	6.22"	4.7"	1.65"
80W	4.85"	7.4"	4.7"	1.65"
100W	4.85"	7.4"	4.7"	1.65"

## REMOTE DRIVER DISTANCES

WIRE GAUGE	12AWG	14AWG	16AWG	18AWG	Total LED load
Maximum Distance	20m/65ft	12m/39ft	8m/26ft	5m/16ft	30W 24V
	10m/32ft	6.5m/21ft	4m/13ft	2.5m/8ft	60W 24V
	6m/20ft	3.5m/11ft	2.5m/8ft	1.5m/5ft	100W 24V



**New Star Lighting**

2225 W Pershing Rd, Chicago, IL 60609

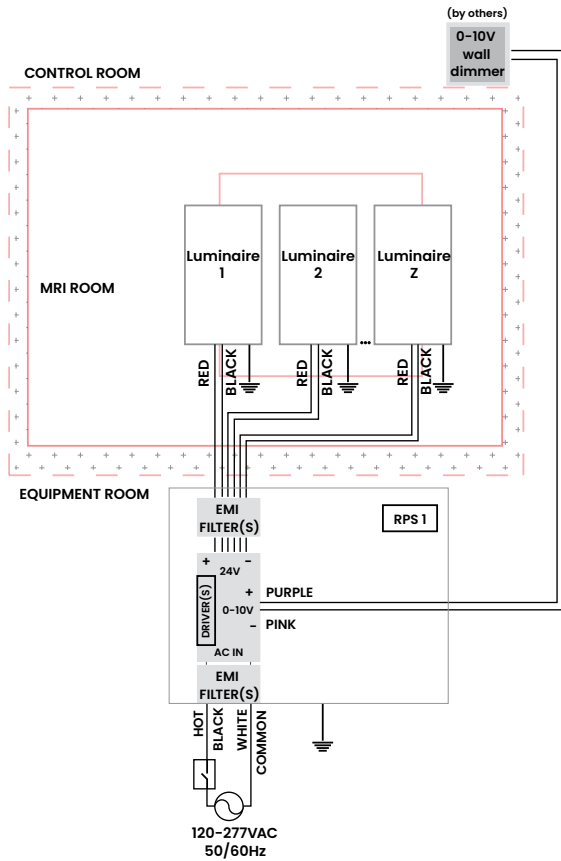
(773) 847-1400

www.newstarlighting.com

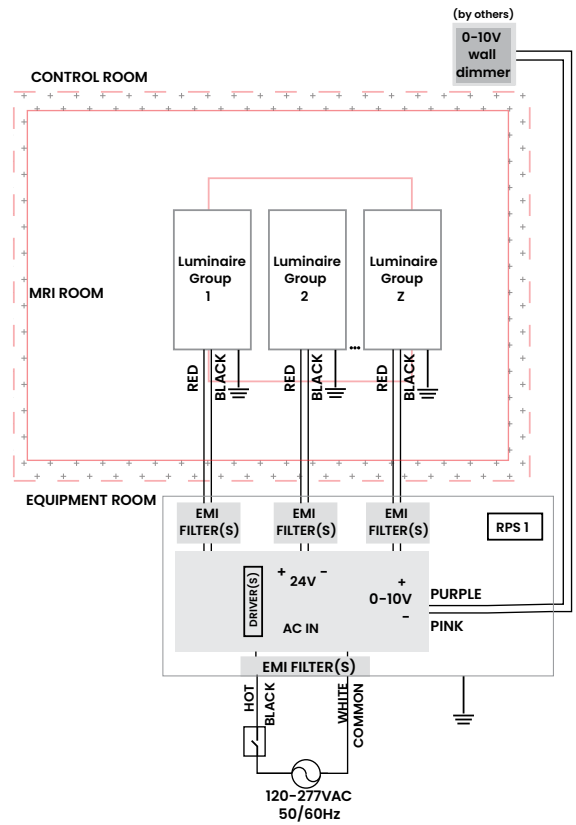
Specifications and dimensions are subject to change without notice. For additional options and dimensional details, please consult your New Star Lighting representative.

© 2026, New Star Lighting. All rights reserved. Unauthorized duplication or distribution is prohibited.

## EXAMPLE WIRING



Single connection installation



Multiple connection installation



**New Star Lighting**  
 2225 W Pershing Rd, Chicago, IL 60609  
 (773) 847-1400  
 www.newstarlighting.com

Specifications and dimensions are subject to change without notice. For additional options and dimensional details, please consult your New Star Lighting representative.

© 2026, New Star Lighting. All rights reserved. Unauthorized duplication or distribution is prohibited.

## IMPORTANT SAFETY MEASURES

Power supply must be grounded to ensure adequate EMI filtering. Remote Power Supply system must be ordered separately, and installed according to provided instructions.

- This must be installed in accordance with the applicable installation code by a person familiar with the construction and operation of the product and the hazards involved in a MRI environment
- Disconnect power to all circuits before wiring fixture
- Install in accordance with all national, state, and local codes
- Remote Power Supply MUST be grounded
- Failure to install unit on a mechanically sound surface may result in personal injury, physical damage, or potential fire hazard
- Use installation procedures appropriate to a MRI environment and sensitive electronic equipment
- Read all fixture marketing and labels to ensure correct installation of the luminaire
- Supplemental instructions may be located on the luminaire, in addition to the instruction sheet provided by New Star, regarding orientation or mounting restrictions



### New Star Lighting

2225 W Pershing Rd, Chicago, IL 60609  
(773) 847-1400  
[www.newstarlighting.com](http://www.newstarlighting.com)

Specifications and dimensions are subject to change without notice. For additional options and dimensional details, please consult your New Star Lighting representative.

© 2026, New Star Lighting. All rights reserved. Unauthorized duplication or distribution is prohibited.