

PROJECT: _____

TYPE: _____

PRODUCT: _____

APPROVED BY: _____

PRODUCT FEATURES

- Field-adjustable LED CCT: Amber (585nm-595nm), White (2700K-5000K), Blue (469nm-480nm), or Red (620nm-630nm)
- 90-degree cut-off obstructs light trespass
- Built for durability; diecast faceplate with polycarbonate lens
- Selectable Sensor with settings for Photo/Motion/Off (can be turned on or off during installation)
- 0-10V Dim adjusted light level
- Installs to a standard J-Box (by others)
- IK10 listed per IEC60068, IP64 rated per IEC60598, NSF2 Splash/Non-Food Zone listed



CCSLR-VI



CCSLR-HI

ORDERING INFORMATION

Example: CCSLR-VI-CCT-LIC-UN-TWB



| CCSLR | | | | | |
|--------|---|--|---|---------------------------------------|---|
| Series | Faceplate Style VI = Vertical VI HI = Horizontal HI | Color Temperature* CCT = White LED 2700K-5000K CCT2 = Amber/ Red /Blue *Housing comes in either white field selectable CCT options or color (amber, red, or blue) field selectable options | Finish* blank = Standard White ALM = Almond (RAL 9001) ARG = Argento (RAL 7035) BLK = Black BL = Blue (RAL 5009) LB = Light Blue (RAL 6034) LIC = Lilac (RAL 4009) PG = Pistachio Green (RAL 6024) CC = Custom RAL Color** *Color swatches on Page 3. | Voltage UN = Universal (120V-277V) | Accessories TWB = Adjustable thru-wall box with hangars (requires two steplights per thru-wall junction box) |

SPECIFICATIONS

CONSTRUCTION: ADA-compliant. Ligature-resistant, diecast aluminum faceplate and reflector.

LENS: UV-Stabilized, injection-molded polycarbonate.

LED: Available in field-selectable White LEDs (2700K-5000k) at 80 CRI, or field-selectable colors: Amber (585-595nm), Red (620-630nm), Blue (469-480nm). Minimum 30,000h with 70% of lumen maintenance in 25°C ambient temperature environment, in compliance with IES LM-70 testing measurements.

ELECTRICAL: 120-277VAC, 50-60HZ, input wattage ~1W, power factor >0.9. Lumens: 15lm. 0-10V Dimming.

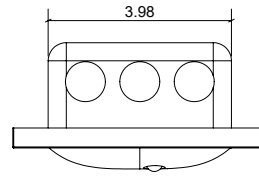
PHOTO CONTROL OPTION: Control circuit can be pre-set with four sensing modes: ON, Photo sensing (PS), PIR sensing, PIR + PS sensing. Delay time for PIR and PIR+PS modes is 1 minute (if no movement, then auto shut off after 1 minute). Environment light sensing: <80 lux LED ON & >300 lux LED OFF.

FINISH: Matte white antimicrobial polyester powder coat finish following multi-stage iron phosphate pre-treatment. Black and other custom finishes optional.

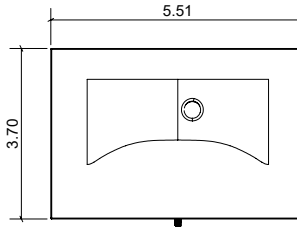
INSTALLATION: Backplate installs to a single-gang j-box (by others). Through-wall accessory housing also available for shared walls.

LABEL: IK10 listed per IEC60068, IP64 rated per IEC60598, NSF2 Splash/Non-Food Zone listed.

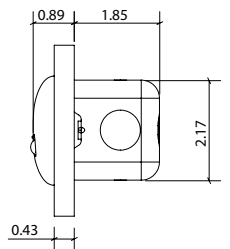
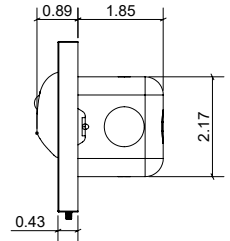
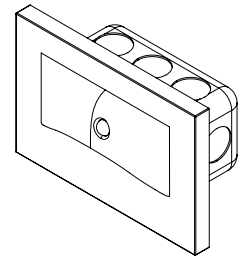
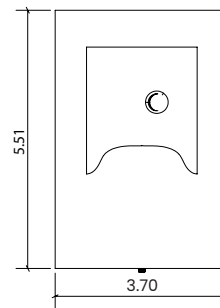
DIMENSIONAL DATA



Horizontal (HO)

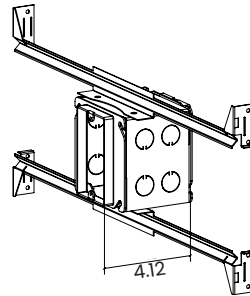


Vertical (VO)



ACCESSORIES (OPT.)

Through Wall Option

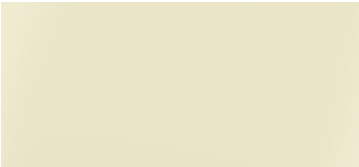





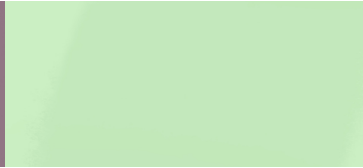



New Star Lighting

2225 W Pershing Rd, Chicago, IL 60609
(773) 847-1400
www.newstarlighting.com

Specifications and dimensions are subject to change without notice. For additional options and dimensional details, please consult your New Star Lighting representative.
© 2025, New Star Lighting. All rights reserved. Unauthorized duplication or distribution is prohibited.

FINISHES

| | | | |
|--|---|--|---|
| Almond (RAL 9001) (ALM) 138/15003 | Argento (RAL 7035) (ARG) 138/90470 | Blue (RAL 5005) (BL) 149/47310 | White (blank) |
|  |  |  |  |
| Light Blue (RAL 5024) (LB) 138/50034 | Lilac (RAL 4009) (LIC) 149/34740 | Pistachio Green (RAL 6024) (PG) 230/51120 | Black (BLK) |
|  |  |  |  |

PERFORMANCE DATA

