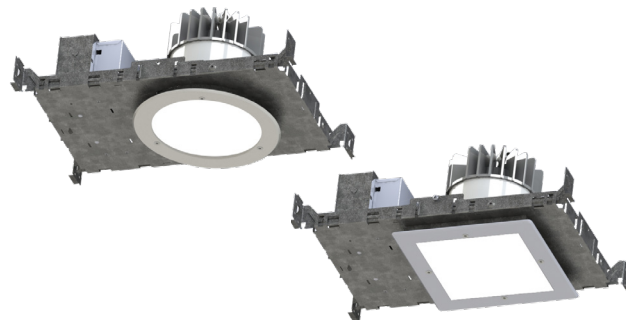


PROJECT: _____
 TYPE: _____
 PRODUCT: _____
 APPROVED BY: _____

PRODUCT FEATURES

- Intended for surgical suite and hybrid surgical suite applications
- 4" and 6" sealed recessed downlight, round or square aperture options
- Variety of wattages and lumen packages, up to 4000lm at 43W (6")
- Suitable for wet location installations, IP65 Rated per IEC60598 and NSF2 Splash/Non-Food Zone listed. Non-IC rated with optional IC-Rated housing per UL 1598 Independently tested and certified to meet the MIL Spec 461G Fixed Navy/Air Force for Radiated and Conducted emissions
- This product is Made in America and complies with Buy American Act (BAA) and Build America, Buy America Act (BABAA)



CCDLS SERIES



ORDERING INFORMATION

Example: CCDLS-4-R-LW-30-90C-F-A-PC-34-DM1

CCDLS						
Series	Aperture 4 = 4 inch 6 = 6 inch	Shape R = Round S = Square	Lumen Output* LW = Low SD = Standard MD = Medium HG = High GREEN/WHITE = 530nm Subject to change. Performance data on page 3	Color Temp. 30 = 3000K 35 = 3500K 40 = 4000K 50 = 5000K	CRI 80C = 80 CRI 90C = 90 CRI	Trim F = Flange T = Trimless
PC						
Trim Finish A = .080 Alum. Painted C = 18Ga. 304 Brushed* D = 18Ga. SS Painted* *Additional fees may apply. Consult factory for details.	Lens PC = 0.125" Polycarbonate	Voltage 12 = 120V 27 = 277V 34 = 347V	Driver Type DM1 = 0-10V Dimming with 1-100% range DMT = 0-10V & TRIAC/ELV* *120V if requesting DMT option.	Options FZ1 = Fuse (120V) FZ2 = Fuse (277V) IC = IC Rated Housing EM = Emerg. Battery (Remote)* W = Wing Bracket *If stored, batteries should be fully recharged every six months and kept between 0°C-25°C to maintain optimal battery capacity.		



New Star Lighting

2225 W Pershing Rd, Chicago, IL 60609
 (773) 847-1400
www.newstarlighting.com

Specifications and dimensions are subject to change without notice. For additional options and dimensional details, please consult your New Star Lighting representative.

© 2026, New Star Lighting. All rights reserved. Unauthorized duplication or distribution is prohibited.

SPECIFICATIONS

HEAT SINK: Custom diecast aluminum heat sink design for maximum thermal dissipation.

FRAME-IN KIT: 20-gauge die-formed, galvanized steel. Vertically adjustable collar accommodates ceiling thicknesses up to 1.25", adjustable post-installation. Telescopic hanger bars come as standard can be installed in either direction (wing bracket can be ordered as option) for installation with wood and steel frame joists and T-grid ceiling systems spaced up to 24" on center.

TRIM: IP-rated trim/Light engine incorporates the heat sink, LED module, optics and lower trim. Configurable with an IP64-rated Flush lens trim that is secured to the Frame-In kit with hidden torsion springs or an IP65 Flush lens trim secured with three (Round) or four (Square) tamper resistant Torx® captive fasteners. Closed-cell gasketing at ceiling flange. See Trim Ordering Information for available options.

OPTICAL: Round or Square aperture. Diffuse Acrylic upper lens. 1/8" clear impact-resistant acrylic or polycarbonate flush lens at ceiling trim. Continuous seal between lens and trim ring. Available with various reflector finishes. See Ordering Information for available options.

ELECTRICAL: LED source available in multiple CCT and CRI combinations with a maximum 3-step MacAdam variation allowance. See Trim Ordering Information for available options. 120-277VAC or 347VAC, 50/60Hz electrical input with serviceable constant current driver (<20% THD, >0.90 PF). Minimum 85% driver efficiency. Standard 0-10V dimming with 1-100% range; 0.2mA maximum source current. Optional eldoLED ECODrive DALI-2/LEDcode2 driver with 1-100% range.

INSTALLATION: Recessed drywall and grid installation. Frame adjustable to ceiling thickness 0.5" to 1.25".

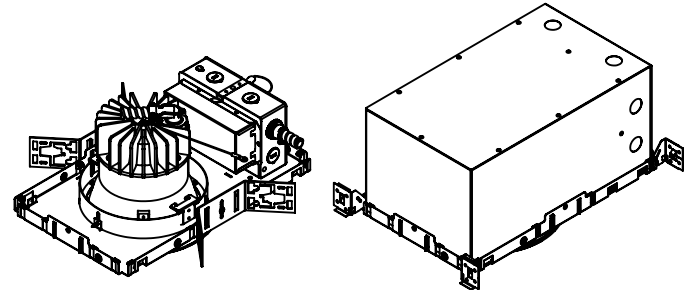
WARRANTY: 5 Year Warranty.

LABEL: Fixture is certified to UL standards by Intertek Testing Laboratory for non-IC and wet location installations. IP65 Rating per IEC60598. Certified for NSF2 Splash Zone/ Non-Food Zones and certified to meet the MIL Spec 461G Fixed Navy/Air Force for Radiated and Conducted emissions. This product is Made in America and complies with Buy American Act (BAA), and the Build America, Buy American Act (BABAA).

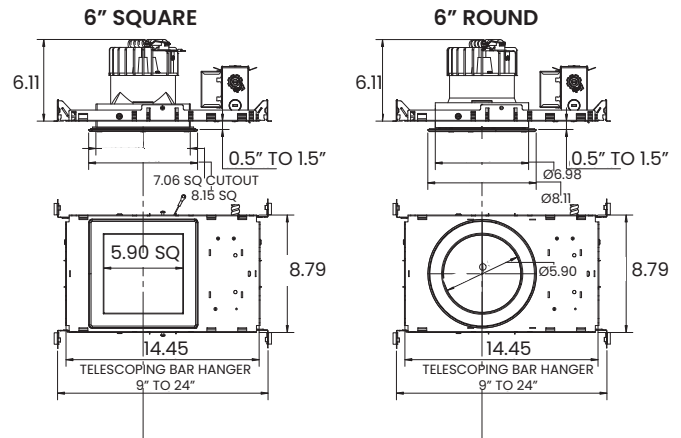
DIMENSIONAL DATA

NON-IC CONSTRUCTION

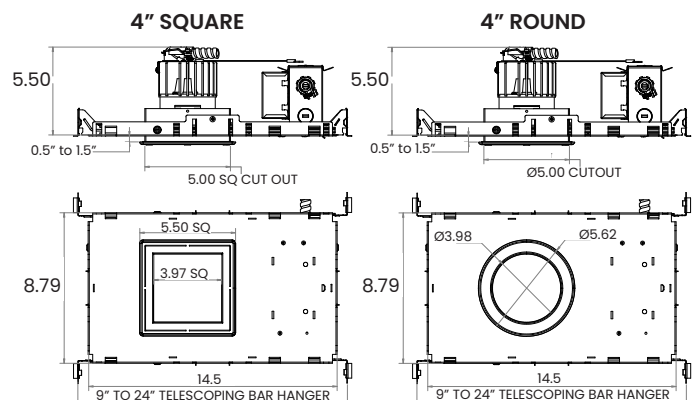
IC CONSTRUCTION



6" DOWNLIGHT



4" DOWNLIGHT



New Star Lighting

2225 W Pershing Rd, Chicago, IL 60609
 (773) 847-1400
www.newstarlighting.com

Specifications and dimensions are subject to change without notice. For additional options and dimensional details, please consult your New Star Lighting representative.

© 2026, New Star Lighting. All rights reserved. Unauthorized duplication or distribution is prohibited.

PERFORMANCE DATA

*Data is with 80 CRI chip. LEDs are frequently updated therefore values may change without notice.

SERIES	SHAPE	LUMENS OUTPUT	CCT	DELIVERED LUMENS	EFFICACY	SYSTEM WATTS
CCDLS6	R	LW= LOW	40K	1405	101.8	13.8
		SD= STANDARD	40K	2081	102.5	20.3
		MD= MEDIUM	40K	2736	101.0	27.1
		HG= HIGH	40K	4181	95.5	43.8

SERIES	SHAPE	LUMENS OUTPUT	CCT	DELIVERED LUMENS	EFFICACY	SYSTEM WATTS
CCDLS6	S	LW= LOW	40K	1392	100.7	13.8
		SD= STANDARD	40K	2070	101.7	20.3
		MD= MEDIUM	40K	2760	101.6	27.1
		HG= HIGH	40K	3990	95.9	41.5

SERIES	SHAPE	LUMENS OUTPUT	CCT	DELIVERED LUMENS	EFFICACY	SYSTEM WATTS
CCDLS4	R	LW= LOW	40K	1260	84	14
		SD= STANDARD	40K	1450	83	18
		MD= MEDIUM	40K	1650	81	21
		HG= HIGH	40K	2172	77	28

SERIES	SHAPE	LUMENS OUTPUT	CCT	DELIVERED LUMENS	EFFICACY	SYSTEM WATTS
CCDLS4	S	LW= LOW	40K	1257	84	14
		SD= STANDARD	40K	1525	84	18
		MD= MEDIUM	40K	1750	83	21
		HG= HIGH	40K	2236	79	28



New Star Lighting

2225 W Pershing Rd, Chicago, IL 60609
(773) 847-1400
www.newstarlighting.com

Specifications and dimensions are subject to change without notice. For additional options and dimensional details, please consult your New Star Lighting representative.

© 2026, New Star Lighting. All rights reserved. Unauthorized duplication or distribution is prohibited.