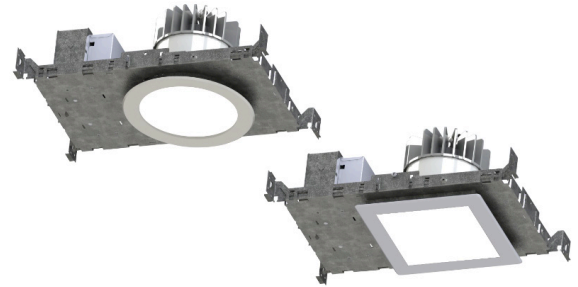


COMPLETECARE™ DOWNLIGHT SERIES

PROJECT: _____
 TYPE: _____
 PRODUCT: _____
 APPROVED BY: _____



CCDL SERIES

PRODUCT FEATURES

- Intended for healthcare applications including Patient Rooms, Exam Rooms, Nurses' Stations, Lobbies and more
- 4" and 6" sealed recessed downlight, round or square aperture options
- Suitable for non-IC and wet location installations (IC Rated housing an option), IK10 listed per IEC60068-2-75: 2014, and IP65 rated per IEC60598
- Variety of wattages and lumen packages, up to 4000lm at 43W (6")
- This product is Made in America and complies with Buy American Act (BAA) and the Build America, Buy America Act (BABAA)

ORDERING INFORMATION

Example: CCDL-4-R-SD30-90C-F-C-AC-34-DM1



CCDL							
Series	Aperture 4 = 4 inch 6 = 6 inch	Shape R = Round S = Square	Lumen Output* LW = Low SD = Standard MD = Medium HG = High *Specify desired lumens. Subject to change. **Higher lumen packages for 6" only. Subject to change. Performance data on page 3.	Color Temp. 27 = 2700K 30 = 3000K 35 = 3500K 40 = 4000K 50 = 5000K Tunable White TW1 = 2700K to 5000K TW2 = 2700K to 6500K	AMB = Amber (585-595nm) BLU = Blue (470nm) RGBW/30 = RGB + 3000K* RGBW/40 = RGB + 4000K* * Must use with DMX Driver	CRI 80C = 80 CRI 90C = 90 CRI	Trim F = Flange T = Trimless

	AC			
Trim Finish A = .080 Alum. Painted B = 18Ga. CRS Painted C = 18Ga. 304 Brushed* D = 18 Ga. SS Painted* *Additional fees may apply. Consult factory for details.	Lens* AC = .060" Acrylic *Lens recessed within trim to minimize glare	Voltage 12 = 120V 27 = 277V 34 = 347V	Driver Type DMI = 0-10V Dimming with 1-100% range DMT = 0-10V & TRIAC/ELV* *Must specify with 120V. Tunable White Driver* DALI8 = 2-Channel DALI Type 8 with 1-100% dimming TWO = 2-Channel 0-10V with 1-100% dimming *Tunable White Driver requires choice of TW1 or TW2 in Color Temp column.	Options FZ1 = Fuse (120V) FZ2 = Fuse (277V) EM = Emerg. Battery (Remote)* W = Wing Bracket *If stored, batteries should be fully recharged every six months and kept between 0°C-25°C to maintain optimal battery capacity. CA Title 20 compliant with remote test switch.



New Star Lighting

2225 W Pershing Rd, Chicago, IL 60609
 (773) 847-1400
www.newstarlighting.com

Specifications and dimensions are subject to change without notice. For additional options and dimensional details, please consult your New Star Lighting representative.

© 2026, New Star Lighting. All rights reserved. Unauthorized duplication or distribution is prohibited.

COMPLETECARE™ DOWNLIGHT SERIES

SPECIFICATIONS

HEAT SINK: Custom diecast aluminum heat sink design for maximum thermal dissipation.

FRAME-IN KIT: 20-gauge die-formed, galvanized steel. Vertically adjustable collar accommodates ceiling thicknesses up to 1.25", adjustable post-installation. telescopic hanger bars come as standard. can be installed in either direction (wing bracket can be ordered as option) for installation with wood and steel frame joists and T-grid ceiling systems spaced up to 24" on center. Quick-access junction box accessible post-installation from above and below ceiling. Includes (7) 1/2" knock-outs to allow straight conduit runs.

TRIM: IP-rated trim/Light engine incorporates the heat sink, LED module, optics and lower trim. Configurable with an IP64-rated Flush lens trim that is secured to the Frame-In kit with hidden torsion springs. Closed-cell gasketing at ceiling flange. See trim ordering Information for available options.

OPTICAL: Round or Square aperture. Diffuse Acrylic upper lens. .060" clear impact-resistant acrylic Continuous seal between lens and trim ring.

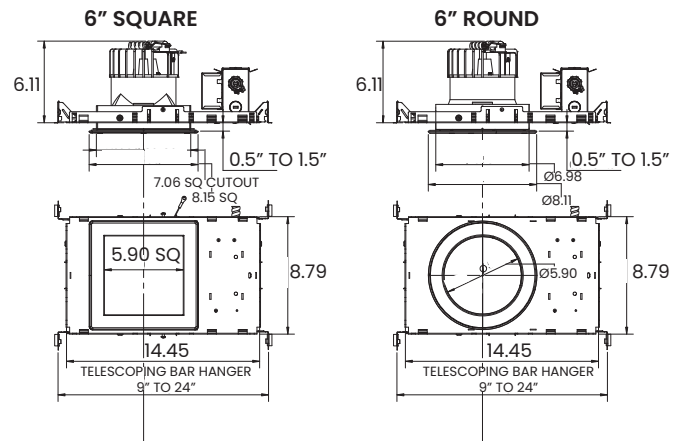
ELECTRICAL: LED source available in multiple CCT and CRI combinations with a maximum 3-step MacAdam variation allowance. See Trim Ordering Information for available options. 120-277VAC or 347VAC, 50/60Hz electrical input with serviceable constant current driver (<20% THD, >0.90 PF). Minimum 85% driver efficiency. Standard 0-10V dimming with 1-100% range and dim-to-dark capabilities; 0.2mA maximum source current. Optional eldoLED ECoDrive DALI-2/LEDcode2 driver with 1-100% range.

INSTALLATION: Recessed drywall and grid installation. Frame adjustable to ceiling thickness 0.5" to 1.25".

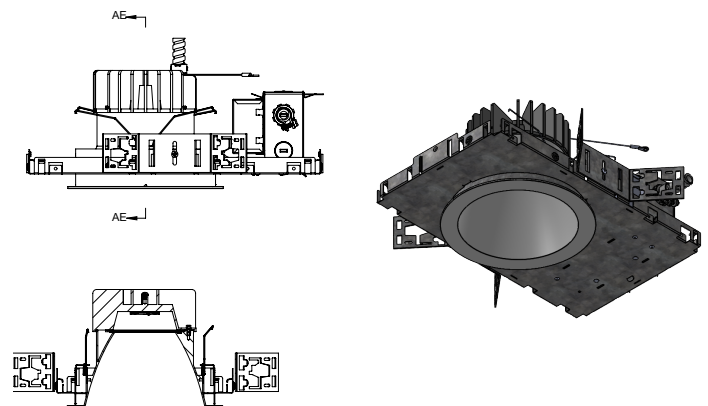
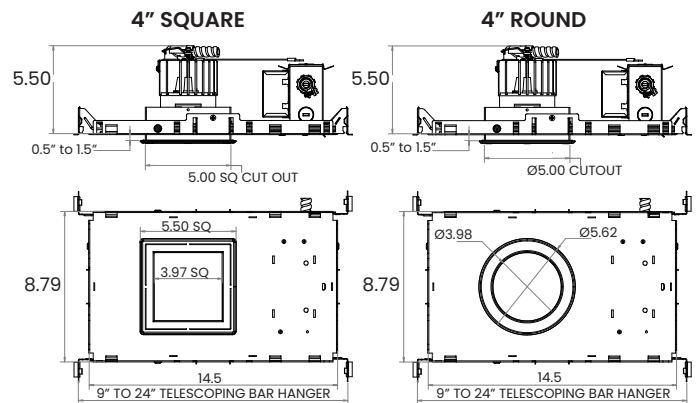
LABEL: Fixture is certified to UL standards for non-IC and wet location installations. IP65 Rating per IEC60598. Certified for NSF2 Splash Zone/ Non-Food Zones. This product is Made in America and complies with Buy American Act (BAA) and the Build America, Buy America Act (BABAA).

DIMENSIONAL DATA

6" DOWNLIGHT



4" DOWNLIGHT



New Star Lighting

2225 W Pershing Rd, Chicago, IL 60609
(773) 847-1400
www.newstarlighting.com

Specifications and dimensions are subject to change without notice. For additional options and dimensional details, please consult your New Star Lighting representative.

© 2026, New Star Lighting. All rights reserved. Unauthorized duplication or distribution is prohibited.

COMPLETECARE™ DOWNLIGHT SERIES

PERFORMANCE DATA

*Data is with 80 CRI chip. 6IN Downlight Wide beam, 1500lm Engine, 115lm/W at 18.75W

SERIES	SHAPE	LUMENS OUTPUT	CCT	DELIVERED LUMENS	EFFICACY	SYSTEM WATTS
CCDL6	R	LW= LOW	40K	1405	101.8	13.8
		SD= STANDARD	40K	2081	102.5	20.3
		MD= MEDIUM	40K	2736	101.0	27.1
		HG= HIGH	40K	4181	95.5	43.8

SERIES	SHAPE	LUMENS OUTPUT	CCT	DELIVERED LUMENS	EFFICACY	SYSTEM WATTS
CCDL6	S	LW= LOW	40K	1392	100.7	13.8
		SD= STANDARD	40K	2070	101.7	20.3
		MD= MEDIUM	40K	2760	101.6	27.1
		HG= HIGH	40K	3990	95.9	41.5

SERIES	SHAPE	LUMENS OUTPUT	CCT	DELIVERED LUMENS	EFFICACY	SYSTEM WATTS
CCDL4	R	LW= LOW	40K	1260	84	14
		SD= STANDARD	40K	1450	83	18
		MD= MEDIUM	40K	1650	81	21
		HG= HIGH	40K	2172	77	28

SERIES	SHAPE	LUMENS OUTPUT	CCT	DELIVERED LUMENS	EFFICACY	SYSTEM WATTS
CCDL4	S	LW= LOW	40K	1257	84	14
		SD= STANDARD	40K	1525	84	18
		MD= MEDIUM	40K	1750	83	21
		HG= HIGH	40K	2236	79	28



New Star Lighting

2225 W Pershing Rd, Chicago, IL 60609
(773) 847-1400
www.newstarlighting.com

Specifications and dimensions are subject to change without notice. For additional options and dimensional details, please consult your New Star Lighting representative.

© 2026, New Star Lighting. All rights reserved. Unauthorized duplication or distribution is prohibited.