

STARTILE GRAPHIC IMAGE SERIES



PROJECT: _____

TYPE: _____

PRODUCT: _____

APPROVED BY: _____

PRODUCT FEATURES

- Intended for Hospitals, Patient Rooms, Exam Rooms, Public Areas, Hotels, Dental Offices, Schools and more
- Polyester powder coat following a 5 stage iron phosphate pre-treatment
- Available in 1x1, 1x4, 2x2, and 2x4 dimensions
- Extensive library of graphics, including photography, designer geometric, biophilic, and pediatric images
- Fixture is certified to UL Standards and suitable for Damp Locations



AG Series

ORDERING INFORMATION

Example: AGG11-111-+PCC(111011)-30-UN



AG		G			
Series	Mounting G = Grid	Nominal Size* 11 = 1x1 14 = 1x4 22 = 2x2 24 = 2x4 *Dimensional Data on page 2.	Ceiling Configuration X Y Z X = Number of SKYLites per Mural Y = Horizontal length of Mural (Feet) Z = Vertical length of Mural (Feet) * Configuration Example on Page 3. Custom configurations and shapes available, consult factory. Images may need to be edited based on layout.	Image blank = .125" Frosted Polycarbonate Please CLICK HERE to go to image selection guide(insert code in place) +PCC(#) = custom image* *Provide your own image (must be 150dpi at 100% image size).	Color Temp. 30 = 3000K 35 = 3500K 40 = 4000K 50 = 5000K

Voltage 12 = 120V 27 = 277V UN = Universal (120-277V)	Options EQ = Earthquake Clips* EL1 = Emerg. Batt. Low (Remote)* *Grid only **Remote battery pack requires a remote-mounted test switch (by others)	Accessory* AD = Straight Edge Recessed Frame *Grid application only. Made in 20Ga. CRS with a white powder coat finish unless otherwise specified.



New Star Lighting
2225 W Pershing Rd, Chicago, IL 60609
(773) 847-1400
www.newstarlighting.com

Specifications and dimensions are subject to change without notice. For additional options and dimensional details, please consult your New Star Lighting representative.

© 2025, New Star Lighting. All rights reserved. Unauthorized duplication or distribution is prohibited.

SPECIFICATIONS

FRAME: Fixture Frame White Extruded Aluminum. Surface fixtures have a cold rolled steel back pan. Flange fixtures have an external frame in cold rolled steel.

IMAGES: Variety of high-resolution images designed to scale into large murals without pixelation. Images are printed on UV-stabilized polycarbonate lens material, unless otherwise specified.

LENS: Opal Polycarbonate lens standard.

LED: Available in four white color temperatures 3000K, 3500K, 4000K and 5000K. Other color temperatures available, consult factory. Standard 0-10V dimming driver with 10-100% range.

POWER SUPPLY:

Grid/Flange Mount has an integral driver.

Input Voltage: AC120V-277V

AG11: Input Power 18.0W

AG14: Input Power 40.0W

AG22: Input Power 40.0W

AG24: Input Power 80.0W

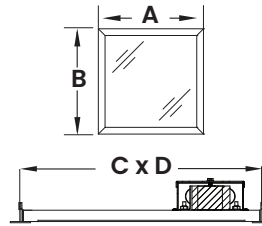
MOUNTING: Mounting fasteners not included.

WARRANTY: Five Year Warranty.

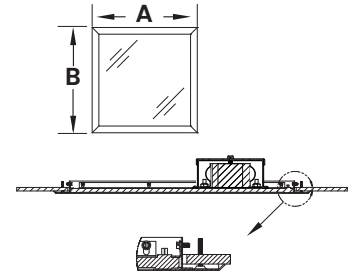
LABEL: Fixture is certified to UL standards by Intertek Testing Laboratory for Damp Locations.

DIMENSIONAL DATA

GRID MOUNTING

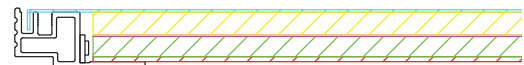


FLANGE MOUNTING



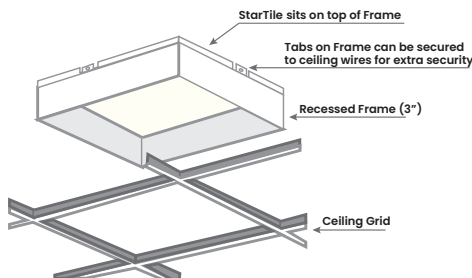
	A	B	C	D	Depth	Rec. Ceiling Cut-out
AGG11	11.81"	11.81"	12"	12"	0.56"	N/A
AGG14	11.81"	47.75"	12"	48"	0.56"	N/A
AGG22	23.62"	23.62"	24"	24"	0.56"	N/A
AGG24	23.62"	47.62"	24"	48"	0.56"	N/A

SECTION VIEW



RECESSED FRAME

Dimensions based on standard (15/16") Grid. Must have 4.5" ceiling clearance.



	Frame Size	StarTile Size (without Drive Box)	Total Height
AGG11	11.79" x 11.79" x 3.00"	11.81" x 11.81" x 0.56"	4.25"
AGG14	11.79" x 47.75" x 3.00"	11.81" x 47.75" x 0.56"	4.25"
AGG22	23.79" x 23.79" x 3.00"	23.62" x 23.62" x 0.56"	4.25"
AGG24	23.79" x 47.49" x 3.00"	23.62" x 47.62" x 0.56"	4.25"



New Star Lighting

2225 W Pershing Rd, Chicago, IL 60609
(773) 847-1400
www.newstarlighting.com

Specifications and dimensions are subject to change without notice. For additional options and dimensional details, please consult your New Star Lighting representative.

© 2025, New Star Lighting. All rights reserved. Unauthorized duplication or distribution is prohibited.

CONFIGURATION EXAMPLE

Order quantity based on number of murals, not StarTile fixtures.

Example: Qty 1: AGG24-M484-RT-UN-57 = 1 Mural consisting of 4 (2x4) StarTile fixtures. Two StarTile fixtures across (8') and two StarTile fixtures down (4').

CONFIGURATION EXAMPLE #1
4 8 4

X Y Z

X = Number of StarTile fixtures per Mural = 4 (2x4 StarTile fixtures)

Y = Horizontal length of Mural (Feet) = 8ft

Z = Vertical length of Mural (Feet) = 4ft



CONFIGURATION EXAMPLE #2
4 4 8

X = Number of StarTile fixtures per Mural = 4 (2x4 StarTile fixtures)

Y = Horizontal length of Mural (Feet) = 4ft

Z = Vertical length of Mural (Feet) = 8ft



New Star Lighting
2225 W Pershing Rd, Chicago, IL 60609
(773) 847-1400
www.newstarlighting.com

Specifications and dimensions are subject to change without notice. For additional options and dimensional details, please consult your New Star Lighting representative.

PERFORMANCE DATA

*LEDs are frequently updated therefore values may change without notice.

MODEL	COLOR TEMP.	LUMENS (DELIVERED)	EFFICACY (lm/W)	INPUT POWER (W)
AG11	3000K	1344	74	18
	3500K	1350	75	18
	4000K	1400	76	18
	5000K	1586	86	18
AG14	3000K	3648	94	40
	3500K	3786	95	40
	4000K	3800	96	40
	5000K	4305	108	40
AG22	3000K	3840	96	40
	3500K	3900	98	40
	4000K	4000	99	40
	5000K	4532	111	40
AG24	3000K	6700	81	80
	3500K	6850	82	80
	4000K	7000	83	80
	5000K	7900	93	80