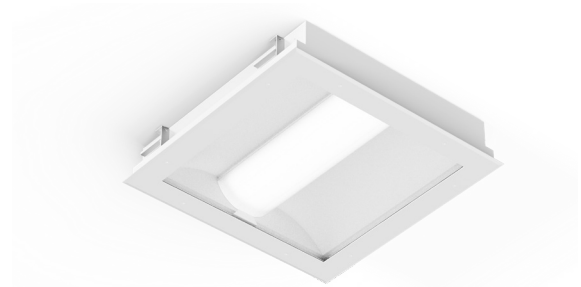


PROJECT: _____
 TYPE: _____
 PRODUCT: _____
 APPROVED BY: _____

PRODUCT FEATURES

- Intended for Healthcare applications, Patient Rooms, Behavioral settings, settings that require an enclosed fixture for High Abuse/ Vandal Resistant settings, and more
- Available in a 1x4, 2x2, 2x4 dimensions
- Provides reading, ambient and exam illumination
- Low Voltage Control options provides lighting control interface to a pillow speaker, bed side rail or other low voltage devices
- Certified IP65 per IEC 60598. CCEA approved. Meets ISO3 (FED-STD-209E/Class 1) Cleanrooms
- This product is Made in America and complies with the Buy American Act (BAA), and the Build America, Buy America Act (BABAA)



AATH Series

ORDERING INFORMATION

EXAMPLE: AATHR24-HC14/OC-1-F3L-40-90C-UN-DM1-LVD-PH



AATH	R	/					
Series	Mounting R = Recessed (Grid/Flange)	Size* 14 = 1x4** 22 = 2x2 24 = 2x4 *Nominal Size. Dimensional Data on Page 2. **AATH14 can be used as pairs adjacent to the patient bed. Fixtures quoted and sold individually.	Housing HC14 = 14Ga. CRS Painted HS14 = 14Ga. SS Brushed HP14 = 14Ga. SS Painted HC16 = 16Ga. CRS Painted HS16 = 16Ga. SS Brushed HP16 = 16Ga. SS Painted HC18 = 18Ga. CRS Painted HS18 = 18Ga. SS Brushed HP18 = 18Ga. SS Painted	Frame* OC = CRS Painted OS = SS Brushed OP = SS Painted *Overlapping. Gauge to match housing	Outer Lens* 1 = .187 Clear Poly. 2 = .250 Clear Poly. 3 = .375 Clear Poly. *Inner diffuser is a white poly.	Function F2 = Ambient & Exam F3L = Reading, Ambient, Exam (Low)* F3H = Reading, Ambient, Exam (High)** *Portion of inner LED boards are used for reading function **N/A with AATH22.	

Color Temp.* 30 = 3000K 35 = 3000K 40 = 4000K 50 = 5000K TW1 = Tunable White 2700K to 5000K** TW2 = Tunable White 2700K to 6500K** *Selected CCT will be the same for both ambient and exam functions. **Available for ambient function	CRI 80C = 80 CRI 90C = 90 CRI	Voltage 12 = 120V 27 = 277V UN = Universal (120-277V)	Driver Type DM1 = 0-10V Dimming to 1% Tunable White Driver* TW0 = 2 CHANNEL 0-10V TWD = 2 CHANNEL DALI8 *Tunable White Driver requires choice of TW1 or TW2	Fasteners TH = Tamper-resistant Torx® head fasteners (std.) PH = Phillips Flat Head Screws* *Suggested for cleanroom settings. Compliant with NSF standards.	Options FZ1 = Fuse (120V) FZ2 = Fuse (277V) EL1 = Remote Emerg Battery (10W)* EL2 = Remote Emerg Battery (20W)* LVD = Multi-Load Dimming LVC** *Requires unswitched line. If stored, batteries should be fully recharged every six months and kept between 0°C-25°C to maintain optimal battery capacity. Provided with test switch on a wall plate unless otherwise specified. **Click HERE for more information. Provides control of lighting from a pillow speaker, bedside rail or wall switch. Leads are factory labeled
--	--	---	--	--	---

SPECIFICATIONS

HOUSING: Cold rolled steel or stainless steel housing available in 14-gauge, 16-gauge or 18-gauge. Overlapping frame available in cold rolled steel or stainless steel. Gauge to match housing. Frame secured to housing via tamper-resistant fasteners for maximum strength.

LENS: Extruded white polycarbonate inner diffuser with a clear polycarbonate outer frame lens. Frame lens provides a flat wipe-down surface for easy cleaning. Lens secured with exclusive LRS (Lens Retention System) hold-down brackets for additional security.

LED: Available in four color temperatures 3000K, 3500K, 4000K and 5000K with maximum 3-step MacAdam variation allowance. Tunable White also available, from 2700K - 5000K or 2700K- 6500K. Minimum 50,000 hours with 70% lumen maintenance in a 25°C ambient temperature environment, compliant with IES LM-80 testing standards.

ELECTRICAL: 120-277VAC 50/60HZ electrical input high power factor electronic, constant current driver (<20% THD, >0.90 PF). Each function is independently circuited for individual control. Standard 0-10V dimming with 1-100% range for ambient and reading functions.

OPTIONAL TUNABLE WHITE DRIVERS:

TWO = 2 CHANNEL 0-10V one channel for brightness, one channel for CCT

TWD = 2 CHANNEL DALI8 one channel for brightness, one channel for CCT

LOW VOLTAGE CONTROL: Voltage-specific LVD controls ambient and reading functions, standard dimming. Exam and Night Light are on separate line voltage circuits, no dimming. The exam is typically wired to a wall switch (by others). Other configurations are available – consult factory. Leads are factory labeled for field installation. Controls and additional accessories by others.

FASTENERS: Tamper-resistant Torx® head fasteners.

FINISH: White antimicrobial polyester powder coat finish following multi-stage iron phosphate pretreatment.

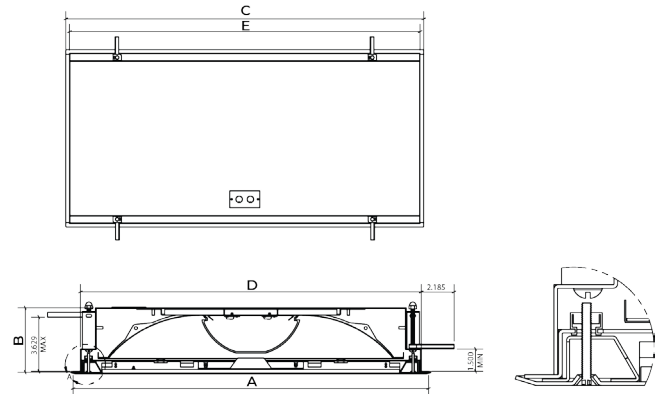
GASKET: Closed cell EPDM and closed cell silicone gaskets prevent air contaminants from entering the fixture. Gasketing seals lens to doorframe and doorframe to housing.

INSTALLATION: Universal recessed mounting accommodates Grid and Flange installations. Luminaires will be supplied with adjustable swing arms that can be used for Flange applications or secured to the side of housing for Grid applications. Compatible with 1-1/2" and 15/16" Grid systems. Mounting for custom ceilings available, consult factory.

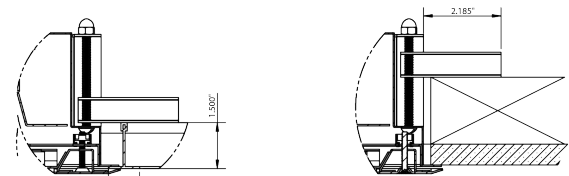
WARRANTY: 5 Year Warranty.

LABEL: Fixture is certified to UL standards for Wet Location under covered ceiling. Certified IP65 per IEC 60598. CCEA approved. Meets ISO3 (FED-STD-209E/Class 1) Cleanrooms. This product was Made in America and complies with the Buy American Act (BAA) and the Build America, Buy America Act (BABAA).

DIMENSIONAL DATA



MODEL	FLANGE WIDTH	DEPTH	FLANGE LENGTH	HOUSING WIDTH	HOUSING LENGTH
	A	B	C	D	E
AATH14	11.69	4.31	47.69	10.71	46.71
AATH22	23.69	4.31	23.69	22.71	22.71
AATH24	23.69	4.31	47.69	22.71	46.71



PERFORMANCE DATA*

*Data is with 80 CRI chip. Tested without an outer lens. LEDs are frequently updated therefore values may change without notice.

MODEL	FUNCTION	COMPARTMENT	LUMENS DELIVERED	EFFICACY (lm/W)	INPUT POWER (W)
AATH14	F2 = Ambient, Exam	Ambient	4830	97	50
		Exam	9300	93	100
	F3L = Reading, Ambient, Exam (Low)	Reading	1250	100	12.5
		Ambient	4830	97	50
		Exam	9300	93	100
	F3H = Reading, Ambient, Exam (High)	Reading	2500	100	25
		Ambient	4830	97	50
		Exam	9300	93	100
	AATH22	F2 = Ambient, Exam	Ambient	2335	93
Exam			4535	91	50
F3L = Reading, Ambient, Exam (Low)		Reading	1202	93	12.5
		Ambient	2335	93	25
		Exam	4535	91	50
AATH24	F2 = Ambient, Exam	Ambient	5100	102	50
		Exam	9860	99	100
	F3L = Reading, Ambient, Exam (Low)	Reading	1340	107	12.5
		Ambient	5100	102	50
		Exam	9860	99	100
	F3H = Reading, Ambient, Exam (High)	Reading	2680	107	25
		Ambient	5100	102	50
		Exam	9860	99	100

