

PROJECT: _____

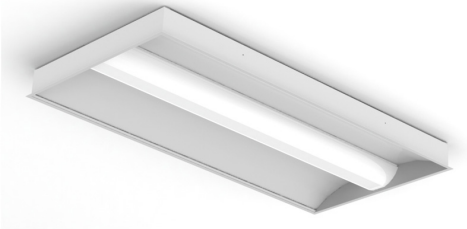
TYPE: _____

PRODUCT: _____

APPROVED BY: _____

PRODUCT FEATURES

- Intended for Circulation Areas, Nurses’ Stations, Lobbies, Waiting Rooms, and more
- Indirect basket for ambient illumination with tool-free room-side lens removal to access LED boards
- Available in 1x1, 1x2, 1x4, 2x2, and 2x4 dimensions
- Provides glare-free ambient lighting, up to 12,200 delivered lumens in the 2x4
- Recessed Grid with optional Flange conversion kit
- Fixture certified by Intertek Testing Laboratories for Damp locations
- This product is Made in America and complies with the Buy American Act requirement



AAO

ORDERING INFORMATION

EXAMPLE: AAOG11-HC20-L2401C-RW-UN-DM



AAO						
Series	Mounting G = Grid	Size* 11 = 1x1 12 = 1x2 14 = 1x4 22 = 2x2 24 = 2x4 *Nominal Size. Dimensional Data on Page 2.	Housing HA20 = 20Ga. CRS Painted HA16 = 16Ga. Alum Painted	Lumen Output* L2 = Low L3 = Standard L4 = High CL = Custom Lumen Output** *Subject to change. Performance Data on page 3. **Must be specified at time of quote. Must not exceed fixture maximum output. Must specify "DM1" if selecting dimming.	Color Temp. 30 = 3000K 35 = 3500K 40 = 4000K 50 = 5000K TW1 = Tunable White 2700K to 5000K TW2 = Tunable White 2700K to 6500K	Circuits 1C = 1 Circuit 2C = 2 Circuits* *Refers to inboard/outboard wiring.
RW						
Diffuser RW = White Polycarbonate		Voltage 12 = 120V 27 = 277V UN = Universal (120-277V)	Driver Type DM1 = 0-10V Dimming to 1% Tunable White Driver*: DALI8 = 1-Channel TW0 = 2-Channel 0-10V *Allows for Inboard/Outboard Control	Options FZ1 = Fuse (120V) FZ2 = Fuse (277V) AM = Antimicrobial Finish on all exposed surfaces SD2 = Step Dimming (50-100%)* SD3 = Step Dimming (30-70-100%)* *N/A with DM1.	Accessory FK = Flange Conversion Kit* EL1 = Remote Emerg. Battery (10W)* *Consult factory for details. *Provided with test switch on a wall plate unless otherwise specified. Requires unswitched line.	

SPECIFICATIONS

HOUSING: 20-Gauge formed cold rolled steel or 16-gauge aluminum housing with continuous seam welds.

LENS: Extruded white polycarbonate lens (smooth side out) serves as an inner basket diffuser for direct ambient light. Unique clip design allows for tool-free lens removal to access LED boards and drivers from room-side.

LED: LED sources available in four color temperatures 3000K, 3500K, 4000K and 5000K with maximum 3-step MacAdam variation allowance. Tunable White also available, from 2700K - 5000K or 2700K- 6500K. Minimum 50,000 hours with 70% lumen maintenance in a 25°C ambient temperature, compliant with IES LM-80 testing standards.

ELECTRICAL: 120-277VAC 50/60HZ electrical input high power factor electronic, constant current driver (<20% THD, >0.95 PF). Each function is independently circuited for individual control. Standard 0-10V dimming with 1-100% range for ambient and reading functions. Step dimming options available.

OPTIONAL TW DRIVERS:

DALI8 - DALI Type 8 (One DALI Address)

TWD - Two Channel 0-10V dimming; one channel for brightness, one channel for CCT

REMOTE POWER SUPPLY: LED driver included - must be remote mount. Must order Power Supply separately on page 2. Consult factory for more information. MRI room EMI filter required, supplied by others.

FINISH: White antimicrobial powder coat finish following multi-stage iron phosphate pretreatment.

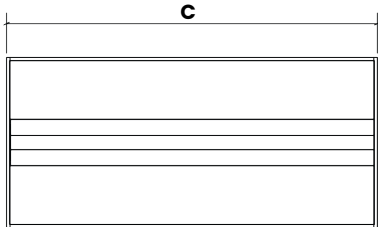
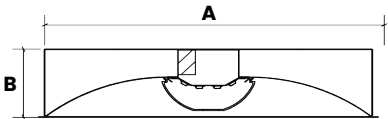
INSTALLATION: Grid installation standard. Optional Flange conversion kit (must specify under Accessory).

WARRANTY: Five Year Warranty.

LABEL: Fixture is certified Damp Location to UL standards by Intertek Testing Laboratories. This product was Made in America and complies with the Buy American Act requirements.

DIMENSIONAL DATA

*Note, below dimensional data shows "L4 = High" lumen output. LED board configuration subject to change based on specified lumen output.



	A	B	C
AAO11	11.750"	5.174"	11.750"
AAO12	11.750"	5.174"	23.750"
AAO14	11.750"	5.174"	47.688"
AAO22	23.750"	5.174"	23.750"
AAO24	23.750"	5.174"	47.688"

PERFORMANCE DATA*

*Data is with 80 CRI chip and tested without an outer lens. LEDs are frequently updated therefore values may change without notice.

MODEL	OUTPUT	COLOR TEMP.	LUMENS DELIVERED	EFFICACY (lm/W)	INPUT POWER (W)
AAO11	L2 = Low	3000K	1275	102	12.5
		3500K	1338	107	12.5
		4000K	1375	110	12.5
		5000K	1413	113	12.5
	L3 = Standard	3000K	1800	100	18
		3500K	1890	105	18
		4000K	1945	108	18
		5000K	2000	111	18
	L4 = High	3000K	2425	97	25
		3500K	2550	102	25
		4000K	2625	105	25
		5000K	2700	108	25
AAO12	L2 = Low	3000K	2450	98	25
		3500K	2575	103	25
		4000K	2650	106	25
		5000K	2725	109	25
	L3 = Standard	3000K	3610	95	38
		3500K	3800	100	38
		4000K	3914	103	38
		5000K	4028	106	38
	L4 = High	3000K	4600	92	50
		3500K	4850	97	50
		4000K	5000	100	50
		5000K	5150	103	50
AAO14	L2 = Low	3000K	5500	110	50
		3500K	5750	115	50
		4000K	5900	118	50
		5000K	6050	121	50
	L3 = Standard	3000K	8025	107	75
		3500K	8400	112	75
		4000K	8625	115	75
		5000K	8850	118	75
	L4 = High	3000K	10400	104	100
		3500K	10900	109	100
		4000K	11200	112	100
		5000K	11500	115	100



New Star Lighting

2225 W Pershing Rd, Chicago, IL 60609
(773) 847-1400
www.newstarlighting.com

Specifications and dimensions are subject to change without notice. For additional options and dimensional details, please consult your New Star Lighting representative.

© 2024, New Star Lighting. All rights reserved. Unauthorized duplication or distribution is prohibited.

PERFORMANCE DATA CONT.

MODEL	OUTPUT	COLOR TEMP.	LUMENS DELIVERED	EFFICACY (lm/w)	INPUT POWER (W)
AAO22	L2 = Low	3000K	2550	102	25
		3500K	2675	107	25
		4000K	2750	110	25
		5000K	2825	113	25
	L3 = Standard	3000K	3800	100	38
		3500K	3990	105	38
		4000K	4100	108	38
		5000K	4220	111	38
	L4 = High	3000K	4900	98	50
		3500K	5150	103	50
		4000K	5300	106	50
		5000K	5450	109	50
AAO24	L2 = Low	3000K	5700	114	50
		3500K	5950	119	50
		4000K	6100	122	50
		5000K	6250	125	50
	L3 = Standard	3000K	8175	109	75
		3500K	8550	114	75
		4000K	8775	117	75
		5000K	9000	120	75
	L4 = High	3000K	11100	111	100
		3500K	11600	116	100
		4000K	11900	119	100
		5000K	12200	122	100

