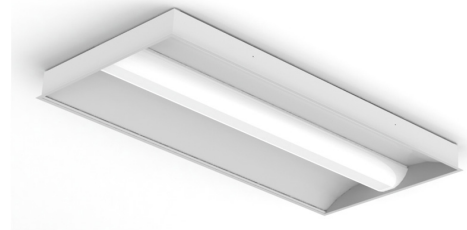


# AURAMED™ CLASSIC SERIES



PROJECT: \_\_\_\_\_  
 TYPE: \_\_\_\_\_  
 PRODUCT: \_\_\_\_\_  
 APPROVED BY: \_\_\_\_\_



AAC

## PRODUCT FEATURES

- Intended for Patient Rooms, Nurses' Stations, Waiting Areas, Lobbies, Medical Office Buildings, and more
- Provides glare-free direct ambient lighting in 2x2 and 2x4 dimensions
- Unique clip design allows for a tool-free lens removal for ease of maintenance
- Optional doorframe and lens provides a flat wipe-down surface for easy cleaning. Wet Location listed
- Recessed Grid or Flange installations. Flange installation uses yoke mounting kit (provided)
- This product is Made in America and complies with the Buy American Act requirement

## ORDERING INFORMATION

EXAMPLE: AACG22-HC20-OC18/CP12-L3402C-RW-UN



AAC						
Series	Mounting G = Grid F = Flange	Size* 22 = 2x2 24 = 2x4  *Nominal Size. Dimensional Data on Page 2.	Housing HC20 = 20Ga. CRS Painted HA16 = 16Ga. Alum Painted	Optional Doorframe Blank = No Doorframe* OA18 = Overlap 18Ga. CRS Painted OA16 = Overlap 16Ga. Alum Painted IC20 = Inset 20Ga. CRS Painted IA16 = Inset 20Ga. CRS Painted  *If no frame is specified, do not select a frame lens. Damp location rated without a doorframe.	Doorframe Lens Blank = No Doorframe Lens* CP12 = .125 Clear Poly. CA12 = .125 Clear Acrylic CP18 = .187 Clear Poly. CA18 = .187 Clear Acrylic  *If no frame is specified, do not select a frame lens.	Lumen Output* L2 = Low L3 = Standard L4 = High CL = Custom Lumen Output**  *Subject to change. Performance Data on page 3. **Must be specified at time of quote. Must not exceed fixture maximum output. Must specify "DMI" if selecting dimming.

Color Temp. 30 = 3000K 35 = 3000K 40 = 4000K 50 = 5000K TW1 = Tunable White 2700K to 5000K TW2 = Tunable White 2700K to 6500K	Diffuser RW = White Polycarbonate RC = Clear Polycarbonate	Voltage 12 = 120V 27 = 277V UN = Universal (120-277V)	Driver Type DMI = 0-10V Dimming to 1% Tunable White Driver*: DALI8 = 1-Channel TWO = 2-Channel 0-10V  **Allows for Inboard/ Outboard control.	Options FZ1 = Fuse (120V) FZ2 = Fuse (277V) TH = Tamper-resistant Torx® head fasteners* AM = Antimicrobial Finish on all exposed surfaces SD2 = Step Dimming (50-100%)** SD3 = Step Dimming (30-70-100%)**  *Allows for Inboard/Outboard control.	Accessory PF = Plaster Frame Kit* EL1 = Remote Emergency Battery (10W)** EL2 = Remote Emergency Battery (10W)**  *Consult factory for details. ***Provided with test switch on a wall plate unless otherwise specified. Requires unswitched line.

## SPECIFICATIONS

**HOUSING:** 20-Gauge formed cold rolled steel or 16-gauge aluminum housing with continuous seam welds.

**DOORFRAME:** Optional die-formed cold rolled steel or aluminum doorframe and optional .125" or .187" clear polycarbonate or acrylic lens to provide a flat wipe-down surface for easy cleaning. Black neoprene gasket between the housing and doorframe.

**LENS:** Extruded white (recommended) or clear polycarbonate lens (smooth side out). Unique clip design allows for tool-free lens removal for ease of maintenance.

**LED:** LED sources available in four color temperatures 3000K, 3500K, 4000K and 5000K with maximum 3-step MacAdam variation allowance. Tunable White also available, from 2700K - 5000K or 2700K - 6500K. Minimum 50,000 hours with 70% lumen maintenance in a 25°C ambient temperature, compliant with IES LM-80 testing standards.

**ELECTRICAL:** 120-277VAC 50/60HZ electrical input high power factor electronic, constant current driver (<20% THD, >0.95 PF). Standard 0-10V dimming with 1-100% range. Step-Dimming options available.

### OPTIONAL TW DRIVERS:

**DALI8** - DALI Type 8 (One DALI Address)

**TWD** - Two Channel 0-10V dimming; one channel for brightness, one channel for CCT

**FASTENERS:** Stainless steel Philips flat head fasteners with captive cage nuts.

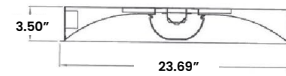
**FINISH:** White antimicrobial powder coat finish following multi-stage iron phosphate pretreatment.

**INSTALLATION:** Grid or Flange installation. Grid installation compatible with 1-1/2" and 15/16" Grid systems. Flange installation uses yoke mounting kit (provided). Mounting for custom ceilings available, consult factory.

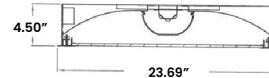
**WARRANTY:** 5 Year Warranty.

**LABEL:** Fixture is certified to UL standards by Intertek Testing Laboratories for Wet Location (under covered ceiling) when a doorframe is used. This product was Made in America and complies with the Buy American Act requirements.

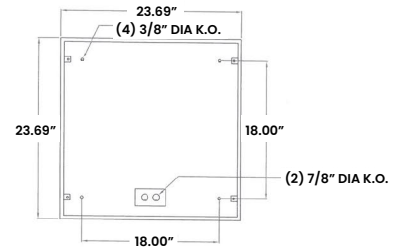
## DIMENSIONAL DATA



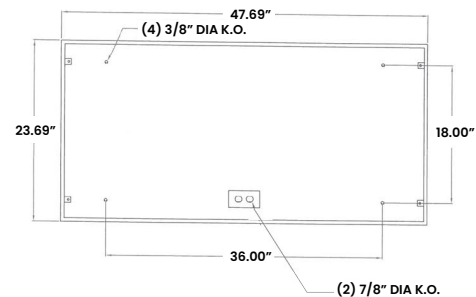
**CROSS SECTION WITHOUT DOOR**



**CROSS SECTION WITH DOOR**



**AAC22 BACKVIEW**



**AAC24 BACKVIEW**



**New Star Lighting**

2225 W Pershing Rd, Chicago, IL 60609  
(773) 847-1400  
www.newstarlighting.com

Specifications and dimensions are subject to change without notice. For additional options and dimensional details, please consult your New Star Lighting representative.

© 2024, New Star Lighting. All rights reserved. Unauthorized duplication or distribution is prohibited.

## PERFORMANCE DATA\*

\*Data is with 80 CRI chip and tested without an outer lens. LEDs are frequently updated therefore values may change without notice.

MODEL	OUTPUT	COLOR TEMP.	LUMENS DELIVERED	EFFICACY (lm/W)	INPUT POWER (W)
AAC22	L2 = Low	3000K	2550	102	25
		3500K	2675	107	25
		4000K	2750	110	25
		5000K	2825	113	25
	L3 = Standard	3000K	3800	100	38
		3500K	3990	105	38
		4000K	4100	108	38
		5000K	4220	111	38
	L4 = High	3000K	1900	98	50
		3500K	5150	103	50
		4000K	5300	106	50
		5000K	5450	109	50
AAC24	L2 = Low	3000K	5700	114	50
		3500K	5950	119	50
		4000K	6100	122	50
		5000K	6250	125	50
	L3 = Standard	3000K	8175	109	75
		3500K	8550	114	75
		4000K	8775	117	75
		5000K	9000	120	75
	L4 = High	3000K	11100	111	100
		3500K	11600	116	100
		4000K	11900	119	100
		5000K	12200	122	100



**New Star Lighting**

2225 W Pershing Rd, Chicago, IL 60609  
(773) 847-1400  
www.newstarlighting.com

Specifications and dimensions are subject to change without notice. For additional options and dimensional details, please consult your New Star Lighting representative.

© 2024, New Star Lighting. All rights reserved. Unauthorized duplication or distribution is prohibited.