

AURAMED LED SERIES

PROJECT: _____
 TYPE: _____
 PRODUCT: _____
 APPROVED BY: _____

PRODUCT FEATURES

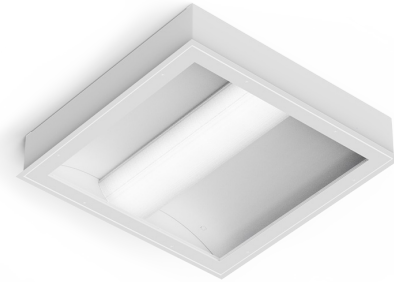
- Intended for Patient Rooms, Hospitals, Examination Rooms, Lobbies, Pharmacies, and more
- Sealed ambient indirect basket style, available in 1x2, 1x4, 2x2, and 2x4 dimensions
- Surface, Grid, and Flange installation options
- UL certified IP65 per IEC60598 and NSF2 Splash Zone/ Non-Food Zone listed ISO Class 4 (Fed Std. 209E/ Class 10)
- This product was Made in America and complies with the Buy American Act (BAA), and the Build America, Buy America Act (BABAA)

ORDERING INFORMATION

Example: AAG22-HC/OC-L235-1C-B-90C-12-DM1-FZ1

AA			/			
Series	Mounting	Size*	Housing	Doorframe	Lumen Output*	Color Temp.
	S = Surface G = Grid F = Flange	14 = 1x4 22 = 2x2 24 = 2x4 *Nominal Size. Dimensional Data on Page 2.	HC = 20Ga. CRS Painted HS = 20Ga. SS Brushed HP = 20Ga. SS Painted HA = 16Ga. Alum Painted	Inset (I) or Overlap (O) OC = 18Ga. CRS Painted OS = 18Ga. SS Brushed OP = 18Ga. SS Painted OA = 16Ga. Alum Painted IE = Extruded Alum* IP = Extruded Alum Painted* IC = 20Ga. CRS Painted IA = 16Ga. Alum Painted IB = 20Ga. SS Brushed IS = 20Ga. SS Painted *Not IP65. N/A with .187 Pris Poly lens.	L2 = Low L3 = High *Subject to change. Performance Data on Page 3.	35 = 3500K 40 = 4000K 50 = 5000K TW1 = Tunable White 2700K to 5000K TW2 = Tunable White 2700K to 6500K

		90C			
Circuits	Outer Frame Lens	CRI	Voltage	Driver Type	Options
1C = 1 Circuit 2C = 2 Circuits* *Now available for Lumen Output L2. Allows for Inboard/ Outboard control.	A = .125 Clear Acrylic B = .125 Clear Poly. D = .156 Clear Poly. E = .187 Clear Acrylic* F = .187 Clear Poly.* *Cannot be used with IE or IP.	90C = 90 CRI	12 = 120V 27 = 277V 34 = 347V UN = Universal (120V-277V)	DM1 = 0-10V Dimming to 1% SD2 = Step Dim. Driver (50-100%)* SD3 = Step Dim. Driver (30-70-100%)* Tunable White Driver**: TWD = 2-Channel 0-10V DALI8 DALI8 = 1-Channel Dali8 *Consult factory for 347V. **Allows for Inboard/Outboard control. Tunable White Driver requires choice of TW1 or TW2 in Color Temp. column.	FZ1 = Fuse (120V) FZ2 = Fuse (277V) EL1 = Emerg. Bat. LED Low (10W)* EL2 = Emerg. Bat. LED Low (20W)* LN = LED Night Light** TH = Tamper-resistant Torx® head fasteners *1x2 Remote Battery. Consult factory for CA Title 24 options. Consult factory for CA Title 24 options. If stored, batteries should be fully recharged every six months and kept between 0°C-25°C to maintain optimal battery capacity. **3500K. Non-dimming. Integrated switch allows light levels at 100%, 70%, 40% and 10% levels.



AA Series



New Star Lighting

2225 W Pershing Rd, Chicago, IL 60609
 (773) 847-1400
www.newstarlighting.com

Specifications and dimensions are subject to change without notice. For additional options and dimensional details, please consult your New Star Lighting representative.

© 2025, New Star Lighting. All rights reserved. Unauthorized duplication or distribution is prohibited.

SPECIFICATIONS

HOUSING: 20-Gauge formed cold rolled steel housing with continuous seam welds. Aluminum and stainless steel options available.

DOORFRAME: Inset and overlapping doorframe available in aluminum, cold rolled steel, and stainless steel. Inset extruded door available in anodized aluminum or white painted aluminum. Frame held to housing via aircraft cable.

LENS: White perforated metal center diffused, lined with .20" white acrylic lens. Outer lens available in clear acrylic or polycarbonate.

LED: Available in three color temperatures 3500K, 4000K, and 5000K with maximum 3-step MacAdam variation allowance. Tunable White also available, from 2700K - 5000K or 2700K-6500K. Minimum 50,000 hours with 70% lumen maintenance in a 25°C ambient temperature environment, compliant with IES LM-80 testing standards.

ELECTRICAL: 120-277VAC or 347VAC 50/60HZ electrical input high power factor electronic, constant current driver (<20% THD, >0.90 PF). Standard 0-10V dimming with 1-100% range. Step-Dimming options available.

OPTIONAL TUNABLE WHITE DRIVERS:

DALI8- DALI Type 8 (One DALI Address)

TWO- Two Channel 0-10V dimming; one channel for brightness, one channel for CCT

FINISH: White antimicrobial polyester powder coat finish following multi-stage iron phosphate pretreatment.

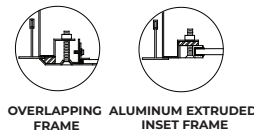
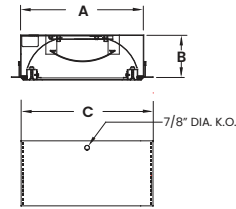
INSTALLATION: Surface, Grid, and Flange installation options. Flange fixtures come with adjustable 90° swing arm for easy installation.

WARRANTY: 5 Year Warranty.

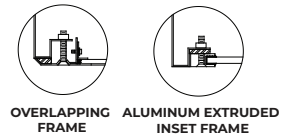
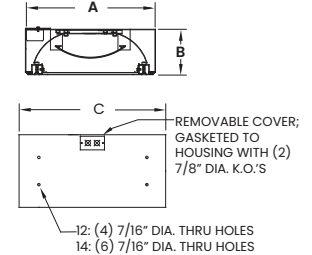
LABEL: Fixture is UL certified IP65 per IEC60598 and NSF2 Splash Zone/Non-Food Zone listed. ISO Class 4 (Fed Std. 209E/ Class 10), This product was Made in America and complies with the Buy American Act (BAA), and the Build America, Buy America Act (BABAA).

DIMENSIONAL DATA

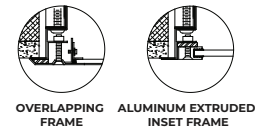
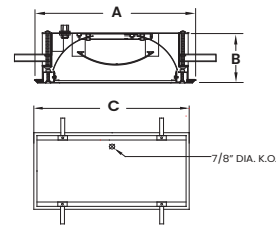
GRID MOUNTING



SURFACE MOUNTING



FLANGE MOUNTING



	A	B	C	REC. CEILING CUT OUT
AAS12	12.00"	3.94"	24.07"	-
AAS14	12.00"	3.94"	48.07"	-
AAS22	24.00"	3.94"	24.07"	-
AAS24	24.00"	3.94"	48.07"	-
AAG12	11.69"	3.94"	24.20"	-
AAG14	11.69"	3.94"	48.07"	-
AAG22	23.69"	3.94"	24.20"	-
AAG24	23.69"	3.94"	48.07"	-
AAF12	13.13"	3.94"	25.25"	24.38" x 12.38"
AAF14	13.13"	3.94"	49.13"	48.38" x 12.38"
AAF22	25.13"	3.94"	25.25"	24.38" x 24.38"
AAF24	25.13"	3.94"	49.13"	48.38" x 24.38"



New Star Lighting

2225 W Pershing Rd, Chicago, IL 60609
(773) 847-1400
www.newstarlighting.com

Specifications and dimensions are subject to change without notice. For additional options and dimensional details, please consult your New Star Lighting representative.

© 2025, New Star Lighting. All rights reserved. Unauthorized duplication or distribution is prohibited.

PERFORMANCE DATA*

*LEDs are frequently updated therefore values may change without notice.

MODEL	OUTPUT	COLOR TEMP.	LUMENS DELIVERED	EFFICACY (lm/w)	INPUT POWER (W)
AA12	L2 = Low	3500K	800	32	25
		4000K	1000	40	25
		5000K	1200	48	25
	L3 = High	3500K	1200	32	38
		4000K	1500	39	38
		5000K	1800	47	38
AA14	L2 = Low	3500K	1600	32	50
		4000K	2000	40	50
		5000K	2400	48	50
	L3 = High	3500K	2400	32	75
		4000K	3000	40	75
		5000K	3600	48	75
AA22	L2 = Low	3500K	1100	44	25
		4000K	1300	52	25
		5000K	1500	60	25
	L3 = High	3500K	1650	43	38
		4000K	1850	49	38
		5000K	2050	54	38
AA24	L2 = Low	3500K	2300	46	50
		4000K	2700	54	50
		5000K	3100	62	50
	L3 = High	3500K	3400	45	75
		4000K	4000	53	75
		5000K	4600	61	75



New Star Lighting

2225 W Pershing Rd, Chicago, IL 60609
(773) 847-1400
www.newstarlighting.com

Specifications and dimensions are subject to change without notice. For additional options and dimensional details, please consult your New Star Lighting representative.

© 2025, New Star Lighting. All rights reserved. Unauthorized duplication or distribution is prohibited.