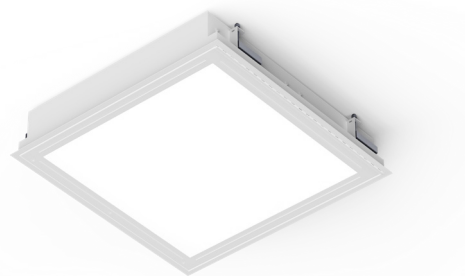


# 57R LED SERIES

PROJECT: \_\_\_\_\_  
 TYPE: \_\_\_\_\_  
 PRODUCT: \_\_\_\_\_  
 APPROVED BY: \_\_\_\_\_

## PRODUCT FEATURES

- Intended for Minimum to Supermax Correctional Facilities, Detention Centers, Public Housing, Athletic Facilities, and more
- Recessed ceiling mount; grid or flange
- Available in 1x1, 1x2, 1x4, 2x2, 2x4 inset doorframe design, secured to housing with countersunk Torx® fasteners
- Lens secured by "Z" retainers with welded studs spaced six inches apart for maximum strength
- This product is Made in America and complies with the Buy American Act (BAA), and the Build America, Buy America Act (BABAA)
- The 57R Series is covered by the New Star Promise.



57R Series

## ORDERING INFORMATION

Example: 57R12-AA-L240-1C-A/B-90C-UN



57		R				
Series	Mounting R = Recessed (Grid/Flange)	Nominal Size*	Housing	Frame	Lumen Output	Color Temp.
		11 = 1x1 12 = 1x2 14 = 1x4 22 = 2x2 24 = 2x4	A = 12Ga. CRS Painted B = 14Ga. CRS Painted C = 16Ga. CRS Painted D = 18Ga. CRS Painted E = 14Ga. SS Brushed F = 16Ga. SS Brushed G = 18Ga. SS Brushed H = 14Ga. SS Painted J = 16Ga. SS Painted K = 18Ga. SS Painted	A = 12Ga. CRS Painted B = 14Ga. CRS Painted C = 16Ga. CRS Painted E = 14Ga. SS Brushed F = 16Ga. SS Brushed H = 14 Ga. SS Painted J = 16 Ga. SS Painted	57R11: L1 = Standard L2 = High 57R12-14: L2 = Low L3 = High CL = Custom Lumen Output**  *Subject to change. Performance Data on page 3. **Must be specified at time of quote. Must not exceed fixture maximum output. Must specify "DMI" if selecting dimming.	57R22-24: L2 = Low L4 = Standard L6 = Medium L8 = High CL = Custom Lumen Output**  *Select Tunable White Driver in Driver column.

/						
Circuits	Outer Lens	Inner Lens	CRI	Voltage	Driver	Options
1C = 1 Circuit 2C = 2 Circuits*	0 = No Lens A = .125 Clear Poly. B = .156 Clear Poly. 1 = .187 Clear Poly. 2 = .250 Clear Poly. 3 = .375 Clear Poly. 4 = .500 Clear Poly. 5 = .187 Clear Temp. Glass 6 = .250 Clear Temp. Glass 7 = .375 Clear Temp. Glass* 8 = .500 Clear Temp Glass* 9 = .750 Clear Temp Glass*	A = .125 Prismatic Acrylic B = .125 Prismatic Poly. C = .156 Prismatic Poly. D = .187 Prismatic Poly. F = .156 Prismatic Acrylic G = .140 DR Acrylic* H = .125 White Frosted Acrylic LC3 = .125 White Frosted Poly.  *Not rated for Wet Locations.	80C = 80 CRI 90C = 90 CRI	12 = 120V 27 = 277V 34 = 347V UN = Universal (120V - 277V)	DM = 0-10V dimming with 10-100% range DMI = 0-10V dimming with 1-100% range  Tunable White Drivers*: DALI8 = DALI Type 8 (One DALI Address) TW0 = 2-Channel 0-10V dimming (Brightness & CCT)  * Compatible with TW1 or TW2 Color Temp. options	FZ1 = Fuse (120V) FZ2 = Fuse (277V) LN = LED Night Light* EL1 = Emerg. Bat. LED Low (10W)** EL2 = Emerg. Bat. LED High (20W)** AH = Allen Head fasteners with center pin reject AM = Antimicrobial finish on exposed surfaces WL = Wet Location (under covered ceiling)  *3500K non-dimming Night Light with integrated switch allows light levels at 100%, 70%, 40% and 10%. **If stored, batteries should be fully recharged every six months and kept between 0°C-25°C to maintain optimal battery capacity.

## SPECIFICATIONS

**HOUSING:** Die-formed, seam welded, and ground smooth housing in cold rolled steel or stainless steel housing (specify gauge). Incorporates a removable reflector unitized with all electrical components for easy installation and maintenance.

**FRAME:** Die-formed one-piece inset doorframe with mitred corners secured to housing with countersunk Torx® fasteners, available in cold rolled steel or stainless steel.

**HINGE:** 16-Gauge full length continuous, staked piano hinge, with welded ends to prevent removal (material to match housing).

**LENS:** Lens per specification (see options) and secured by "Z" retainers with welded studs spaced six inches apart for maximum strength.

**LED:** Available in three color temperatures 3500K, 4000K, and 5000K with maximum 3-step MacAdam variation allowance. Other color temperatures available, consult factory. Minimum 50,000 hours with 70% lumen maintenance in a 25°C ambient temperature environment, compliant with IES LM-80 testing standards.

**ELECTRICAL:** 120-277VAC or 347VAC, 50/60HZ electrical input high power factor electronic, constant current driver (<20% THD, >0.95 PF).

### OPTIONAL TW DRIVERS:

**DALI8** - DALI Type 8 (One DALI Address)

**TWO** - Two channel 0-10V dimming: one channel for brightness, one channel for CCT

**FASTENERS:** Tamper-resistant Torx® head fasteners.

**FINISH:** White polyester powder coat finish following multi-stage iron phosphate pretreatment.

**GASKET:** Black neoprene gasket around interior door frame to prevent light leaks.

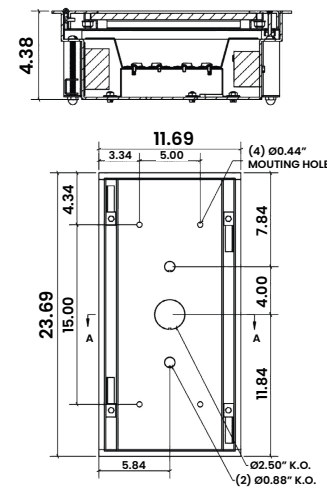
**INSTALLATION:** Recessed mounting accommodates Grid and Flange installations. Recessed fixtures will be supplied with adjustable swing arms that can be used for Flange applications or taped to the side for Grid applications. Recessed install compatible with 1-1/2" and 15/16" Grid systems. Mounting for custom ceilings available, consult factory.

**WARRANTY:** New Star Promise.

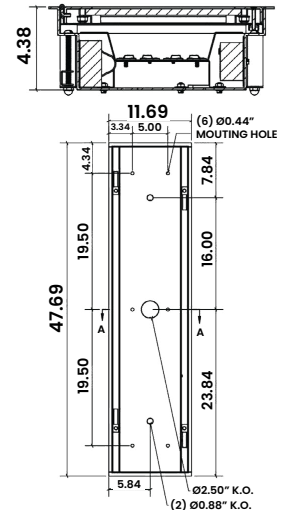
**LABEL:** Fixture is certified to UL standards. Suitable for Wet Locations (under covered ceilings) when option selected. This product is Made in America and complies with the Buy American Act (BAA), and the Build America, Buy America Act (BABAA).

## DIMENSIONAL DATA

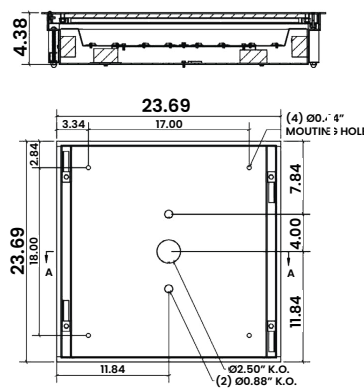
**57R12**



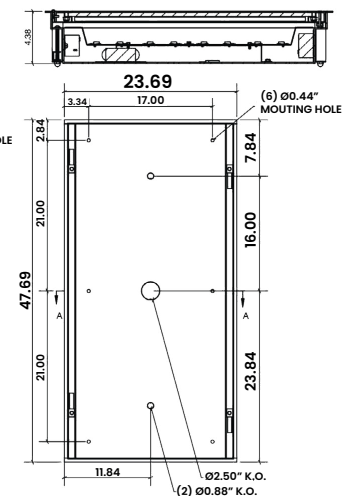
**57R14**



**57R22**



**57R24**



The 57R LED Series is covered by our New Star Promise.

Our promise means we will repair or replace any of our High Abuse or Vandal-Resistant architectural luminaires when installed according to our instructions for the life of the original installation if the fixture should fail due to physical abuse\*.

\*Damage caused by gunfire and chemical reactions is not covered by the New Star Promise.

## PERFORMANCE DATA

\*LEDs are frequently updated therefore values may change without notice.

MODEL	OUTPUT	COLOR TEMP.	LUMENS DELIVERED	EFFICACY (lm/W)	INPUT POWER (W)
57R11	L1 = Standard	3500K	1438	115	12.5
		4000K	1500	120	12.5
		5000K	1562	1250	12.5
	L2 = High	3500K	2090	105	20
		4000K	2185	109	20
		5000K	2280	114	20
57R12	L2 = Low	3500K	2875	115	25
		4000K	3000	120	25
		5000K	3125	125	25
	L3 = High	3500K	4180	110	38
		4000K	4370	115	38
		5000K	4560	120	38
57R14	L2 = Low	3500K	5750	115	50
		4000K	6000	120	50
		5000K	6250	125	50
	L3 = High	3500K	8250	110	75
		4000K	8625	115	75
		5000K	9000	120	75
57R22	L2 = Low	3500K	3000	120	25
		4000K	3125	125	25
		5000K	3250	130	25
	L4 = Standard	3500K	6000	120	50
		4000K	6250	125	50
		5000K	6500	130	50
	L6 = Medium	3500K	8625	115	75
		4000K	9000	120	75
		5000K	9375	125	75
	L8 = High	3500K	11500	115	100
		4000K	12000	120	100
		5000K	12500	125	100



**New Star Lighting**

2225 W Pershing Rd, Chicago, IL 60609  
(773) 847-1400  
www.newstarlighting.com

Specifications and dimensions are subject to change without notice. For additional options and dimensional details, please consult your New Star Lighting representative.

© 2025, New Star Lighting. All rights reserved. Unauthorized duplication or distribution is prohibited.

## PERFORMANCE DATA CONT.

\*LEDs are frequently updated therefore values may change without notice.

MODEL	OUTPUT	COLOR TEMP.	LUMENS DELIVERED	EFFICACY (lm/W)	INPUT POWER (W)
57R24	L2 = Low	3500K	6000	120	50
		4000K	6250	125	50
		5000K	6500	130	50
	L4 = Standard	3500K	12000	120	100
		4000K	12500	125	100
		5000K	13000	130	100
	L6 = Medium	3500K	17250	115	150
		4000K	18000	120	150
		5000K	18750	125	150
	L8 = High	3500K	23000	115	200
		4000K	24000	120	200
		5000K	25000	125	200



**New Star Lighting**

2225 W Pershing Rd, Chicago, IL 60609  
(773) 847-1400

[www.newstarlighting.com](http://www.newstarlighting.com)

Specifications and dimensions are subject to change without notice. For additional options and dimensional details, please consult your New Star Lighting representative.

© 2025, New Star Lighting. All rights reserved. Unauthorized duplication or distribution is prohibited.