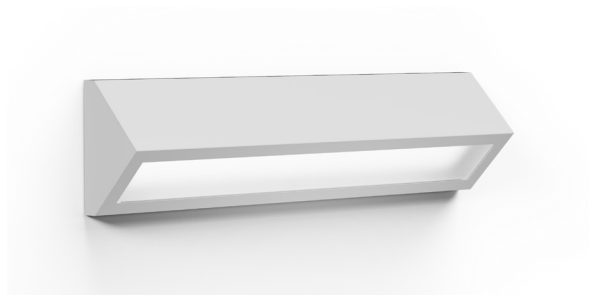


55S FLUORESCENT SERIES

PROJECT: _____
 TYPE: _____
 PRODUCT: _____
 APPROVED BY: _____

PRODUCT FEATURES

- Intended for Minimum to Supermax Correctional Facilities, Detention Centers, Public Housing, Athletic Facilities, and more
- Available in 2ft and 4ft clamshell housing with contraband drop slot between ceiling and back of luminaire
- Inner and outer lens secured by "Z" bracket retention system with 6" stud spacing for maximum strength
- This product is Made in America and complies with the Buy American Act, and the Build America, Buy America Act



55S Fluorescent Series

ORDERING INFORMATION

Example: 55SF2-B-L140-1C-A/A-UN



55SF					
Series	Nominal Size	Housing	# of Lamps	Lamp Type	# of Ballasts
	1 = 1ft 2 = 2ft 4 = 4ft *Nominal size. Dimensional Data on Page 2.	B = 14Ga. CRS Painted C = 16Ga. CRS Painted D = 18Ga. CRS Painted E = 14Ga. SS Brushed F = 16Ga. SS Brushed G = 18Ga. SS Brushed H = 14Ga. SS Painted J = 16Ga. SS Painted K = 18Ga. SS Painted	55S1: 1 = 1 Lamp 2 = 2 Lamp 55S2-55S4: 1 = 1 Lamp 2 = 2 Lamp 3 = 3 Lamp	55S1 18 = 18W Triple Gx24q-2 8Q = 18W Quad G24q-2 26 = 26W Triple Gx24q-3 6Q = 26W Quad G24q-3 32 = 32W Triple Gx24q-3 42 = 42W Triple Gx24q-4	55S2 17 = Linear 17W T8 14 = Linear 14W T5 24 = Linear 24W T5 HO 40 = 40 Twin 2Gx11

Outer Lens 0 = No Lens A = .125 Clear Poly. B = .156 Clear Poly. 1 = .187 Clear Poly. 2 = .250 Clear Poly. 3 = .375 Clear Poly. 4 = .500 Clear Poly. 5 = .187 Clear Temp. Glass 6 = .250 Clear Temp. Glass 7 = .375 Clear Temp. Glass* 8 = .500 Clear Temp. Glass* 9 = .750 Clear Temp Glass* *Must use with a 12Ga. or 14Ga. Frame.	Inner Lens 0 = No Lens A = .125 Prismatic Acrylic B = .125 Prismatic Poly. C = .156 Prismatic Poly. D = .187 Prismatic Poly. F = .156 Prismatic Acrylic G = .140 DR Acrylic* LC3 = .125 White Frosted Poly. *Not rated for Wet Locations.	Voltage 12 = 120V 27 = 277V 34 = 347V UN = Universal (120V-277V)	Options DB = Ballast: Dimming (0-10V) * E1 = Emergency Ballast (450 Lumens) *** E2 = Emergency Ballast (1350 Lumens) *** PR = Programmable Ballast - Rapid Start AH = Allenhead Screws NL = Fluorescent Night Light * FZ = Fuse Holder * WL = Wet Location UV = .005 UV Absorbing Overlay * Cannot use with universal voltage option ** Consult factory for T5 availability

55S FLUORESCENT SERIES



SPECIFICATIONS

HOUSING: Die-formed, seam welded, and ground smooth surface clamshell design in cold rolled steel or stainless-steel. Incorporates a removable reflector unitized with all electrical components for easy installation and maintenance.

BACKPLATE: Die-formed with contraband drop slot and embossed mounting holes (material to match housing). Security caulking between ceiling and fixture is not required with this backplate design.

HINGE: 16-Gauge full length continuous, staked piano hinge with welded ends to prevent removal (material to match housing).

LENS: Outer and Inner lens options secured by "Z" retainers with weld studs spaced six inches apart for maximum strength.

ELECTRICAL: 120-277VAC or 347VAC, 50/60HZ electrical input high power factor electronic, constant current driver (<20% THD, >0.95 PF). Optional 0-10V Dimming with 1-100% range or 10-100% range.

FASTENERS: Tamper resistant Torx® head screws with center pin reject. Optional Allen head screws available.

FINISH: White powder coat finish following multi-stage iron phosphate pretreatment.

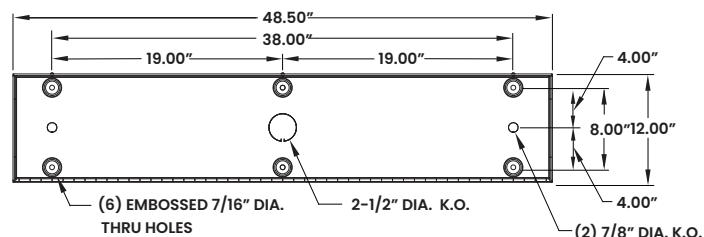
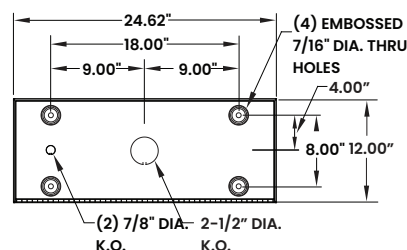
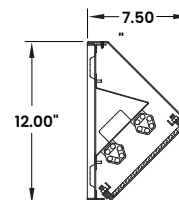
GASKET: Black neoprene gasket around door frame to prevent light leaks.

MOUNTING: Surface wall installation.

WARRANTY: New Star Promise.

LABEL: Fixture is certified to UL standards for Wet Locations. This product is Made in America and complies with the Buy American Act (BAA).

DIMENSIONAL DATA



The 55S Fluorescent Series is covered by our New Star Promise.

Our promise means we will repair or replace any of our High Abuse or Vandal-Resistant architectural luminaires when installed according to our instructions for the life of the original installation if the fixture should fail due to physical abuse*.

*Damage caused by gunfire and chemical reactions is not covered by the New Star Promise.



New Star Lighting

2225 W Pershing Rd, Chicago, IL 60609
(773) 847-1400
www.newstarlighting.com

Specifications and dimensions are subject to change without notice. For additional options and dimensional details, please consult your New Star Lighting representative.

© 2025, New Star Lighting. All rights reserved. Unauthorized duplication or distribution is prohibited.